

<https://doi.org/10.11646/zootaxa.5814.4.11>

<http://zoobank.org/urn:lsid:zoobank.org:pub:5142E434-4787-49DE-B25D-BA67339E452C>

SANGJIN HAN & SEUNGGWAN SHIN (2026) A new species and new records of Scathophagidae (Diptera) from high-altitude wetlands in South Korea, with an assessment of DNA barcoding utility. *Zootaxa*, 5807 (3): 401–426.

The correct version of Figure 6 (page 414) is provided below:

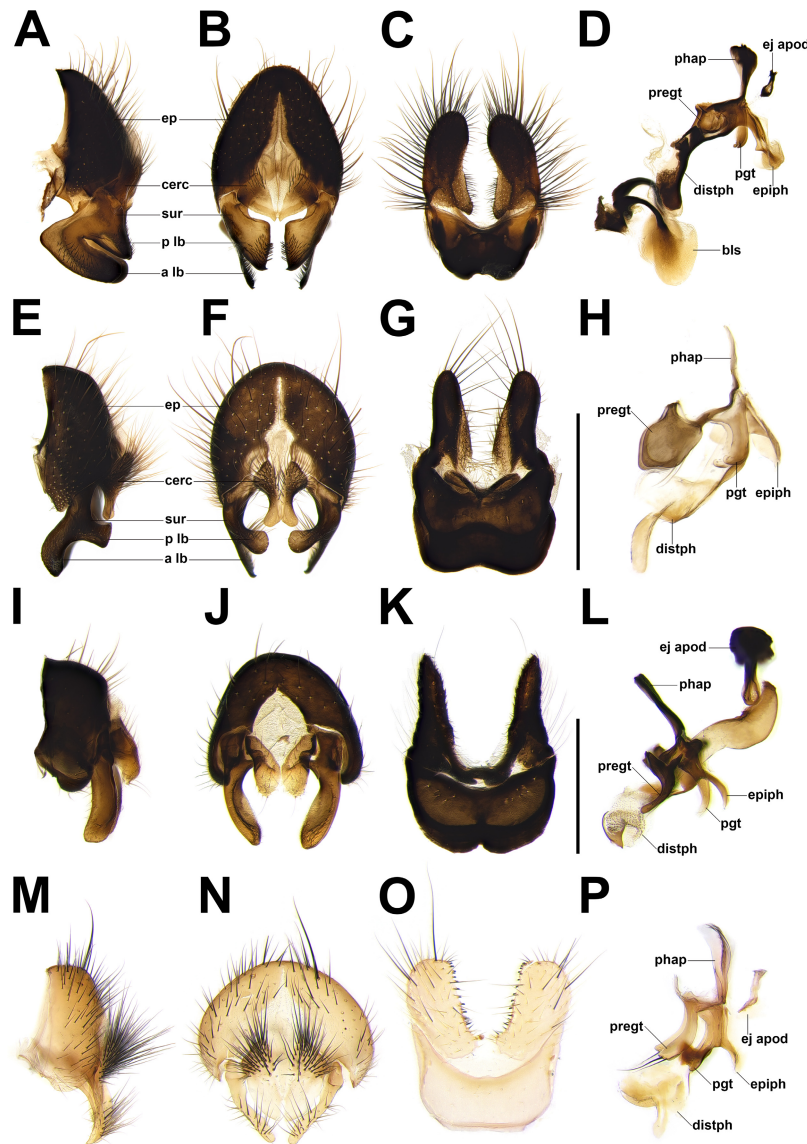


FIGURE 6. Male sternite 5 and terminalia of Scathophagidae spp. A–D, male genitalia of *Cordilura monochroma*, epandrium, cerci and surstyli in lateral view (A), posterior view (B), sternite 5 in ventral view (C), phallus in lateral view (D); E–H, male genitalia of *Cordilura paludicola* sp. nov., epandrium, cerci and surstyli in lateral view (E), posterior view (F), sternite 5 in ventral view (G), phallus in lateral view (H); I–L, male genitalia of *Cleigastrea flavipes*, epandrium, cerci and surstyli in lateral view (I), posterior view (J), sternite 5 in ventral view (K), phallus in lateral view (L); M–P, male genitalia of *Megaphthalma pallida*, epandrium, cerci and surstyli in lateral view (M), posterior view (N), sternite 5 in ventral view (O), phallus in lateral view (P). Scale bar: 0.25 mm (L); 0.5 mm (H, I–K, M–P); 1 mm (A–D, E–G). Abbreviations: a lb—anterior lobe; cerc—cercus; bls—bilobed structure; ej apod—ejaculatory apodeme; ep—epandrium; epiph—epiphallus; p lb—posterior lobe; pgt—postgonite; distph—distiphallus; phap—phallapodeme; preg—pregonite; sur—surstylus.