



<http://dx.doi.org/10.11646/zootaxa.3755.6.1>

<http://zoobank.org/urn:lsid:zoobank.org:pub:A6FB3A63-16CB-429D-BD71-40171B2E54F2>

## Revision of the checkered beetle genus *Erymanthus* Spinola, 1841 (Coleoptera, Cleridae, Clerinae)

ROLAND GERSTMEIER & MAX SALVAMOSER

Technische Universität München, Department Ökologie und Ökosystemmanagement, Lehrstuhl für Tierökologie, Hans-Carl-von-Carlowitz-Platz 2, 85350 Freising, F.R.G. E-mail: [r.gerstmeier@tum.de](mailto:r.gerstmeier@tum.de), [max.salvamoser@mytum.de](mailto:max.salvamoser@mytum.de)

### Table of contents

Abstract	501
Introduction	501
Material and methods	502
Systematics	503
<i>Erymanthus</i> Spinola, 1841	503
Key to species	505
<i>Erymanthus ater</i> Hintz, 1905	505
<i>Erymanthus belzebuth</i> Thomson, 1856	507
<i>Erymanthus bicolor</i> Chapin, 1924	510
<i>Erymanthus diversipes</i> Pic, 1932	512
<i>Erymanthus flavonotatus</i> Pic, 1932	514
<i>Erymanthus gemmatus</i> Klug, 1842	516
<i>Erymanthus horridus</i> Westwood, 1852	519
<i>Erymanthus maculaticeps</i> Pic, 1949	522
<i>Erymanthus melanurus</i> Kuwert, 1893	525
<i>Erymanthus pustulosus</i> Quedenfeldt, 1888	527
<i>Erymanthus revoili</i> Fairmaire, 1887	531
<i>Erymanthus semirufus</i> Kuwert, 1893, n.stat.	534
<i>Erymanthus testaceus</i> Pic, 1950	536
<i>Erymanthus transversopustulatus</i> Gerstmeier & Salvamoser 2013, n. sp.	537
<i>Erymanthus variolatus</i> Brême, 1844	539
<i>Erymanthus vesuvioides</i> Thomson, 1856	542
References	548

### Abstract

The genus *Erymanthus* Spinola, 1841 is taxonomically revised to include sixteen species. The species *E. transversopustulatus* n. sp. is described as new. *Erymanthus concoloripennis* Pic, 1932, n. syn. is placed in synonymy with *E. bicolor* Chapin, 1924, *E. horridus* var. *semirufus* Kuwert, 1893 is recognized as a distinct and valid species *E. semirufus*; *E. variegatus* Pic, 1950 n. syn. is synonymized with *E. pustulosus* Quedenfeldt, 1888. A key to the species, color photographs, genital figures and distribution maps are provided. *Erymanthus ampliatus* Hintz, 1902 is transferred to the genus *Gypomyx* Gorham, 1883 (= *Gypomyx amplificatus* (Hintz, 1902) n. comb.).

**Key words:** African species, taxonomy, identification key, genital figures, distribution maps

### Introduction

The genus name “*Erymanthus* Klug” was first published by Spinola (1841), based on a specimen from the Dejean collection, probably labelled by Klug as *Erymanthus gemmatus* Klug. One year later, Klug (1842) described the

genus (as originally intended), as “*Erymanthus* Kl., Spinola” referring to Spinola’s publication of 1841, and the new species “*Erymanthus gemmatus* n. sp.”. The issue of priority over the authorship was resolved by Corporaal (1949) who concluded that, despite Spinola (1841) attributing *Erymanthus* to Klug, priority must be given to *Erymanthus* Spinola. Spinola (1844) gave a detailed six-page description of *Erymanthus* as the first genus under his third subfamily “Platynoptéroïdes”, followed by the redescription of *E. gemmatus*.

Corporaal (1950) lists within *Erymanthus* 17 species with an exclusively African distribution. No information on the biology of the species is available. *Gyponyx ampliatus* (Hintz, 1902), n. comb. is transferred from *Erymanthus* Spinola, 1841 to the genus *Gyponyx* Gorham, 1883, and therefore was excluded from this study.

In the present revision one species is described as new, two species are synonymized and one variety is recognised as a valid species. A determination key to the resulting 16 species of *Erymanthus* is presented. Distribution maps, habitus photographs and illustrations of male external reproductive organs, pygidium and ventrite VI are illustrated.

## Material and methods

The study is based on 320 specimens from 19 museums and private collections. Museum acronyms and curators are as follow:

BMNH	The Natural History Museum, London, United Kingdom	Beulah Garner
CRSW	Collection Rudolf Schuh, Wien, Austria	Rudolf Schuh
CMEW	Collection Manfred Egger, Wattens, Austria	Manfred Egger
HNHM	Hungarian Natural History Museum, Budapest, Hungary	Ottó Merkl
ISNB	Institut Royal des Sciences Naturelles de Belgique, Brussels, Belgium	Pol Limbourg
JRCP	Jakub Rolčík Collection Prague, Czech Republic	Jakub Rolčík
MNHN	Museum National d’Histoire Naturelle, Paris, France	Antoine Mantilleri
MRAC	Musée Royal de l’Afrique Central, Tervuren, Belgium	Marc de Meyer
MZUF	Museo Zoologico “La Specola”, Firenze, Italy	Luca Bartolozzi
RGCM	Roland Gerstmeier Collection, Munich (deposited in the collection of the Technical University Munich, Animal Ecology), Germany	Roland Gerstmeier
RMNH	Rijksmuseum van Natuurlijke Historie, Leiden, Netherlands	Ben Brugge
SAMC	Iziko South African Museum, Cape Town, South Africa	Dawn Larsen
SANC	South African National Collection of Insects, Pretoria	Beth Grobbelaar
SDEI	Senckenberg Deutsches Entomologisches Institut, Müncheberg, Germany	Lutz Behne, Stephan Blank
SMNS	Staatliches Museum für Naturkunde, Stuttgart, Germany	Wolfgang Schawaller
TMSA	Transvaal Museum of Natural History, Pretoria, South Africa	Ruth Müller
ZMB	Zoologisches Museum Berlin, Germany	Manfred Uhlig, Bernd Jäger
ZMPA	Museum of the Institute of Zoology, Polish Academy of Science, Warszawa, Poland	Tomasz Huflejt
ZMUH	Zoologisches Institut und Zoologisches Museum, Universität Hamburg, Germany	Frank Wieland

The revision is based only on morphological studies including preparations of the male genitalia, the pygidium and the ventrite VI. At least one male specimen (when available) was dissected. For this purpose the specimen was heated in distilled water and the genitalia were removed with fine forceps through small incisions made along the sides of the terminal abdominal segments. Aedeagi were cleaned of soft tissue in 10% KOH, cleared in 70% ethyl alcohol and submerged in glycerine, then stored in genital vials pinned below each specimen. Often the abdomen or the genitals of the type material have already been dissected, resulting in destroyed or missing parts, therefore many specimens could not be fully examined.

Measurements, except total body length, were made under a stereo microscope using an ocular micrometer. Total body length is the distance measured from the apical clypeal margin to the elytral apices. Elytral length was

measured alongside the elytral suture and pronotal and pygidial length were taken from the dorsal middle line. Pronotal, elytral and pygidial width were measured at the broadest extreme.

Habitus photographs of adult beetles were taken, as a series, using a DFC 490 digital camera fitted to a Leica Z6 stereo microscope, then composited with Leica LAS 3.8. automontage software. Plot points of distribution maps were made with QuantumGIS (1.8.0) and are based on locality data sourced from specimen labels. These data included exact locality information based on longitude/latitude coordinates.

## Systematics

We propose that *Erymanthus ampliatus* Hintz, 1902 be transferred to the genus *Gyponyx* Gorham, 1883 as *Gyponyx ampliatus* (Hintz, 1902) **n. comb.**

### *Erymanthus* Spinola, 1841

Type species: *Erymanthus gemmatus* Klug, 1842

Spinola 1841: 75; Klug 1842: 327; Lacordaire 1857: 457; Desmarest in Chenu 1860: 269; Schenkling 1903: 28, 64; Corporaal 1949: 355; Opitz 2010: 66.

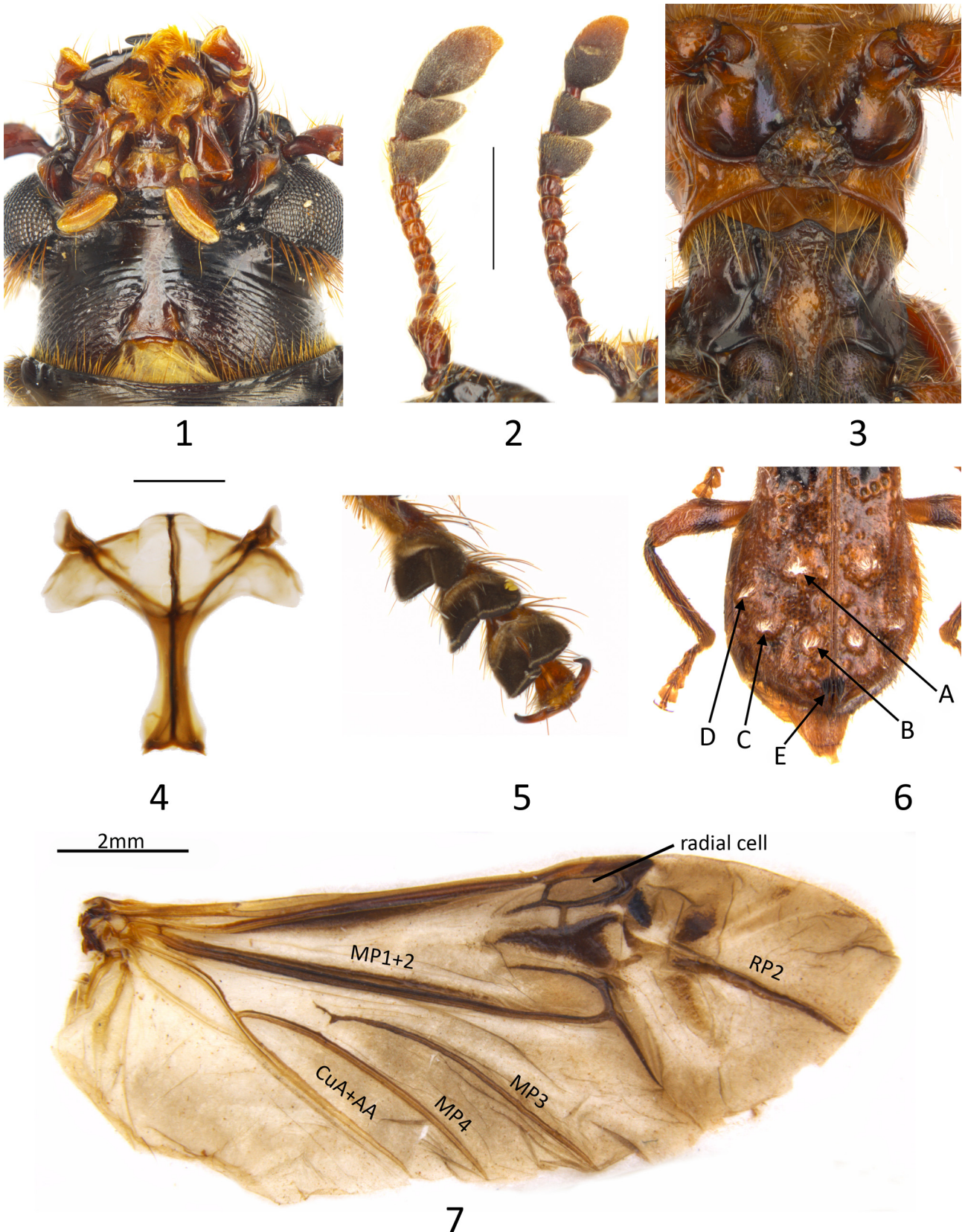
**Head:** Head including eyes wider than base of pronotum, eyes coarsely faceted, reniform, protruding laterally, deeply emarginated at antennal insertion, separated by one to two eye widths, ocular notch distinct; frons with two grooves or two gibbosities; labrum bilobed, terminal segment of labial palpomeres securiform; terminal maxillary palpomeres spatulate, widened distally; gular sutures apically converging, gular process broad with two papillae (Fig. 1); antennae comprised of 11 antennomeres; antennomere 1 with one long hair; antennomeres 2–8 filiform, 9–10 triangular, 9–11 forming a distinct club with dense light pubescence; male specimens with a small pit-like sensilla on antennomere 11 (Fig. 2).

**Thorax:** Procoxal cavities closed behind; pro-intercoxal process narrow, broadly dilated posteriorly (Fig. 3); pronotum longer than broad; pronotum subparallel, widest in middle, basal collar conspicuously narrower, pronotal arch slightly narrower, sometimes with strong lateral gibbosities; pronotal disc with more or less conspicuously gibbosities and always with a longitudinal elongate-ovate groove centrally; mesocoxal cavities open laterally; anterior mesoventral process present, forming a small convexity; intercoxal mesoventral process more or less wide, protruding laterally; mesepisternum with fine punctation anteriorly, surface smooth posteriorly; scutellum oblong-ovate; hypomeron tapering apically towards intercoxal process, forming a typical “edge” towards base; metendosternite with conspicuous furcal arms, laminae broadly triangular (Fig. 4).

**Elytra:** Elongate, almost two times longer than broad, base not margined, usually with strong humeri; apex strongly dilated, declivous; elytral punctation in basal part arranged into ten striae, punctation behind humeral part mostly irregular; punctation crateriform, circular to oblong-ovate, sometimes rasp-like; in the posterior part many gibbosities without regular arrangement; posterior half usually with five large gibbosities with dense setae and more or less regular distribution (Fig. 6); hind wing with AA3+4 and CuA2 absent (hence wedge cell absent), MP4 absent or with vetige evident at junction of MP3 and MP3+4.

**Legs:** Legs stout, femora conspicuously swollen, especially profemora; pro- and mesotibiae strongly bent, metatibiae only slightly bent, almost straight; carinae of pro- and mesotibiae over entire length, carinae of metatibiae extending from two-thirds to full length; inner edge of pro- and mesofemora and -tibiae with a row of short, thick bristles; claws simple; tarsal pulvillar formula 3–3–3; pulvilli deeply bilobed; tibial spur formula 1–1–1 or 1–2–1 (*E. pustulatus* only).

**Abdomen:** Six visible abdominal ventrites; abdominal metaintercostal process narrow; pygidium broadest at the beginning of the processes, pygidial index (PL:PW) between 1:0.8 and 1:1; tegminal struts conspicuously long and variable in shape and width.



**FIGURES 1–7.** Morphological characters of the genus *Erymanthus*. (1) Head, lower surface (scale bar 1mm), (2) Antennae, left female, right male with pit-like sensilla (scale bar 1mm), (3) Pro- and Mesothorax, lower surface (scale bar 1mm), (4) Metendosternite (scale bar 0.5mm), (5) Protarsus (scale bar 1mm), (6) Gibbosity diagram, (7) Wing venation (scale bar 2mm).

## Key to species

1. Antennomeres 9–11 longer than antennomeres 1–8 ..... *Erymanthus ater*  
- Antennomeres 9–11 shorter than antennomeres 1–8 ..... 2
2. Main color of elytra dark brown to black ..... 3  
- Main color of elytra light or at least bicolored ..... 7
3. Color of elytra blue to dark blue, head and pronotum orange to dark orange ..... 4  
- Color of elytra, head and pronotum dark brown to black ..... 5
4. Antennae orange, front legs orange. .... *Erymanthus bicolor*  
- Antennomeres 1–2 orange, 3–11 black, profemora orange, protibiae black ..... *Erymanthus diversipes*
5. Elytra dark brown with an oblique pale fascia, elytral punctation conspicuously rasp-like; pronotal gibbositities conical; gibbositities A, B, C, and E with black setal tuft, D with white setae ..... *Erymanthus revoili*  
- Less than four rows of elytral punctation rasp-like, pronotal gibbositities not conical ..... 6
6. Whole specimen black, sometimes dark brown; pronotal groove with longitudinal ridge; elytra with fine scattered punctation; gibbositities A, B, C, D with testaceous setal tuft, E with black setae ..... *Erymanthus horridus*  
- Specimen dark brown to black with light brown maculation on elytra and pronotum; elytra with coarse punctation; gibbositities A, B, C, D and E with black setal tuft ..... *Erymanthus pustulosus*
7. Elytra bicolored, flavotestaceous and black ..... 8  
- Color of elytra brown ..... 10
8. Basal half of elytra black, apical part flavotestaceous; all gibbositities with white setal tuft. .... *Erymanthus semirufus*  
- Basal half of elytra flavotestaceous, apical part mostly black ..... 9
9. Length 12–20mm, apical half of elytra conspicuously broader; elytral punctation irregular, not dense ..... *Erymanthus vesuvioides*  
- Length 9–12mm, apical half of elytra not conspicuously broader; elytral punctation in rows, dense ... *Erymanthus melanurus*
10. All gibbositities with black setal tuft ..... 11  
- Only gibbositities E with black setal tuft ..... 12
11. Length: 8–13mm femora with dark markings around the middle; gibbosity A not oblong ovate ..... *Erymanthus gemmatus*  
- Length: 18–20mm femora with two light brown crossbands, procoxa light brown; gibbosity A oblong ovate. .... *Erymanthus transversopustulatus* **n. sp.**
12. Elytra with dense punctation in distinct rows, some punctures merge longitudinally ..... *Erymanthus testaceus*  
- Elytra not with dense punctation, not in distinct rows, punctation not merging longitudinally ..... 13
13. Elytral punctation small, not rasp-like (only 2–3 punctures at extreme base) ..... *Erymanthus belzebuth*  
- Elytral punctation not small, rasp-like ..... 14
14. Gibbositities with white setae ..... *Erymanthus flavonotatus*  
- Gibbositities E with black setal tuft ..... 15
15. Abdominal ventrites black; antennae from A3 onwards dark brown to black ..... *Erymanthus maculaticeps*  
- Abdominal ventrites black, with large lateral yellow spots, the two ultimate ventrites yellow, antennae brown ..... *Erymanthus variolatus*

### *Erymanthus ater* Hintz, 1905

(Figs 8–9, 39A)

Hintz 1905: 308.

**Specimens examined: Holotype:** N. Kamerun, Joh. Albrechtshöhe, L. Conradt S., Type, Schenkling det., *Erymanthus ater* m, Holotypus, *Erymanthus ater* Hintz, 1905, labelled by MNHUB 2012 (ZMB).

**Comment on type specimens:** Hintz (1905: 308) describes one specimen from Johann Albrechts-Höhe, therefore the specimen of Zoologisches Museum Berlin (ZMB) is considered the holotype, fixed by monotypy (ICZN 1999: Article 73.1.2).

**Others:** Muséum Paris, Senegal, Podor, R. Chudeau. 1911, Chôut. Sept. 1910 (MNHN). N. Kamerun, Joh. Albrechtshöhe, 1897-99, L. Conradt S. V., 1229, *Erymanthus ater* Hintz, Museum f. Naturkunde Berlin (ZMB). Uamgebiet, Bosum, 11.–20.6.14, Tessmann S., 10024-10030, *Erymanthus ater* Hintz, Museum f. Naturkunde Berlin (ZMB). Uamgebiet, Bosum, 11.–20.6.14, Tessmann S., C9544-9548, *Erymanthus ater* Hintz, Museum f. Naturkunde Berlin (ZMB). N. Nigeria, Kaduna, 7.–9.71, leg. H. Politzar, Coll. Mus. Tervuren, *Erymanthus ater* Hintz ♂, J. J. Menier det. 1981 (MRAC). Fort-Crampel, Congo-Français, Coll. X, *Erymanthus horridus* Ww. (HNHM). Soil-Zoological Exp. Congo-Brazzaville, Brazzaville, ORSTOM park, 22.12.1963, No. 494, beaten and singled, leg. Balogh & Zicsi, M. Budapest (ISNB). Elfenbeinküste, Comoe-Park, 25.6.1993, lg. Rödel (RGCM). Rep. Centrafric., La Maboque, 3.4.1977, N’Gombé-Docko Réc. (RGCM).



**FIGURE 8.** *Erymanthus ater*: (A) Aedeagus ventral, (B) Phallus lateral, (C) Tegmen dorsal, (D) Spicular fork, (E) Pygidium, (F) Ventrite VI; (scale bars 1mm).

**Diagnosis:** *Erymanthus ater* can be confused with *E. revoili*, *E. horridus* and *E. pustulosus*; *E. revoili* has conical pronotal gibbosities and a conspicuous rasp-like punctation; *E. horridus* shows a longitudinal ridge in its pronotal groove and has a conical phallic tip; the tegminal struts of *E. pustulosus* are broadly furcate and the tips of tegminal lobes are blunt; *E. ater* is clearly recognizable by the long antennomeres 9–11.

**Length:** (10 specimens measured) 10–14mm (average 11.75mm).

**Head:** Black; antennae brown; frons with two gibbosities; with whitish to yellow anteriorly directed pilosity; antennomere 2 longer than A3; antennomeres 9–11 longer than 1–8; with a large club.

**Pronotum:** Pronotal length to width ratio 1.04:1 to 1.13:1 (average 1.08:1); black, pronotal arch lighter; apex sometimes with light markings; pronotal groove shallow, gibbosities protuberant; broadest in the middle; with long yellow-brown pilosity.

**Scutellum:** Black; vested with white setae.

**Elytra:** Elytral length to width ratio 2.13:1 to 2.47:1 (average 2.36:1); black with diaphanous markings; punctuation fine, elongate-ovate, interstices wider than diameter of punctuation, irregularly distributed; with dense posteriorly directed red brown to black pilosity; gibbosities with dense fine punctuation (sometimes with dark setal tuft).

**Legs:** Dark, sometimes basal part of meso- and metafemora lighter.

**Lower surface:** Dark, with dense posteriorly directed white pilosity.

**Male genitalia, pygidium, ventrite VI:** Tips of tegminal lobes pointed, tegminal lobes three-eighths length of tegmen; tegminal struts quite narrow, last one-fifth furcate; phallic tip blunt; posterior side of pygidium rounded, very slightly pointed; processes of ventrite VI pointed.

**Distribution:** Senegal, Ivory Coast, Nigeria, Cameroon, Central African Republic, Congo.

**Seasonal occurrence:** Collected from June to December.

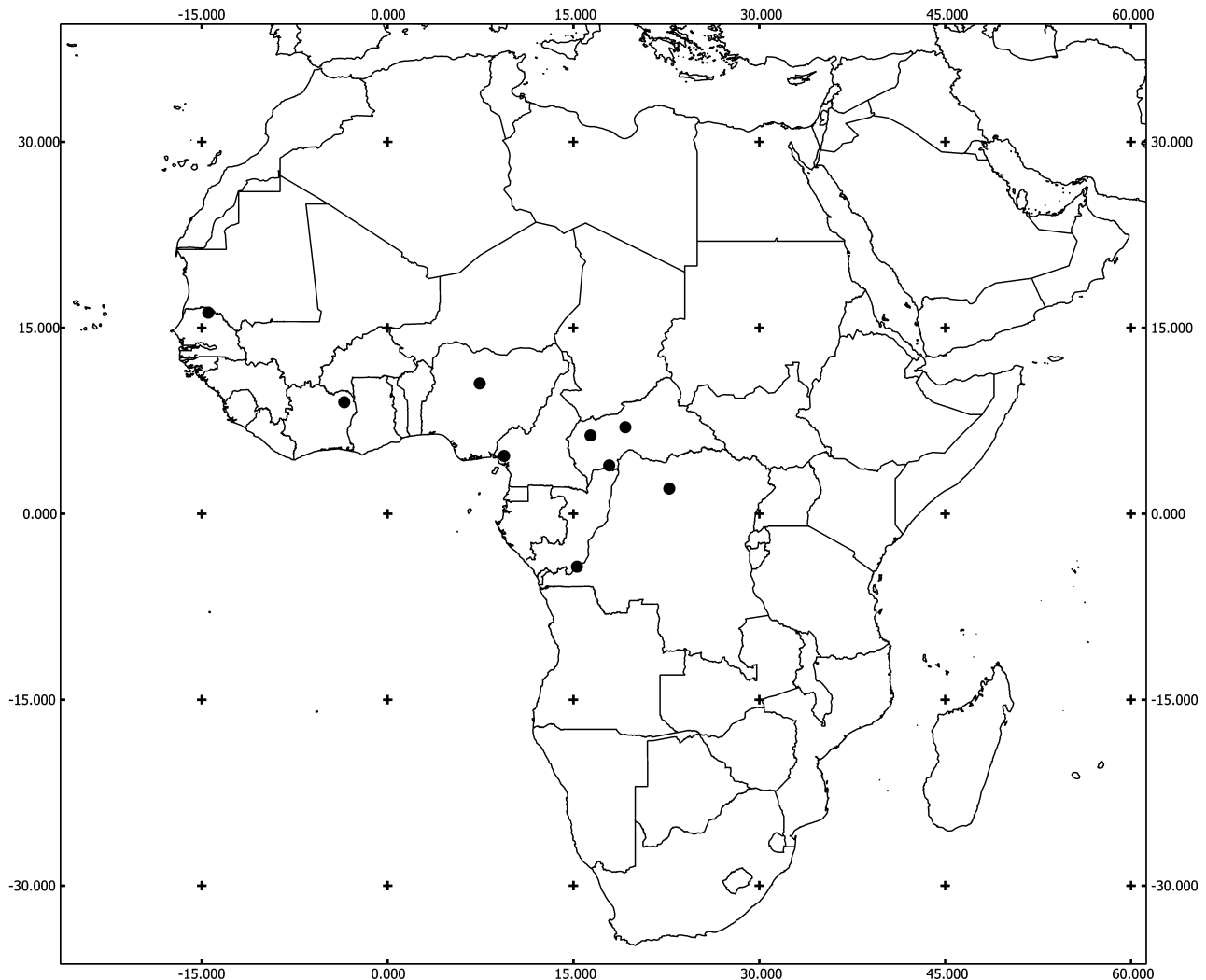


FIGURE 9. Distribution of *Erymanthus ater*.

***Erymanthus belzebuth* Thomson, 1856**

(Figs 10–11, 39B)

Thomson 1856: 113, t5 f8.

**Specimens examined:** **Lectotype** (designated here): Senegambia, Holotype J. Thomson, Thoms. Rev. Zoo. 56.113.5.2, Ex Musæo James Thomson, Museum Paris 1952, Coll. R. Oberthür (MNHN). **Paralectotype** (designated here): Njam-Njam, Semnio, Bohndorff S., det. J. Thomson 1856 (ZMB).



**FIGURE 10.** *Erymanthus belzebuth*: (A) Aedeagus ventral, (B) Phallus lateral, (C) Tegmen dorsal, (D) Spicular fork, (E) Pygidium, (F) Ventricle VI; (scale bar 1mm).

**Comment on type specimens:** As Thomson (1856: 113, 114) made no reference to type specimens in his description of *Erymanthus belzebuth*, the specimen labeled “Holotype” should be designated lectotype. The other specimen of J. Thomson, located in ZMB is treated as paralectotype.

**Others:** Kamerun, Joko, L. Rolin 7/10, *Erymanthus belzebuth* Thoms., Museum f. Naturkunde Berlin (ZMB). Togo, Kete Kratje, 11.1899, Graf Zech S. (ZMB).

**Diagnosis:** *Erymanthus belzebuth* can be confused with *E. variolatus*, *E. flavonotatus*, *E. maculaticeps* and *E. semirufus*; in *E. semirufus* and *E. flavonotatus* the metafemora are dark brown from base to middle and at least the last two abdominal segments are flavotestaceous; *E. maculaticeps* is often with indication of a dark spot on pro-

and mesofemora, its metafemora is dark from base towards middle, the tegminal struts are lanceolate and the tips of tegminal lobes pointed; *E. variolatus* has at least two flavotestaceous apical abdominal segments; *E. belzebuth* is clearly recognizable by its dark abdomen.

**Length:** (4 specimens measured) 17–21mm (average 19mm).

**Head:** Light brown, sometimes with dark markings; antennomeres proximally darker; frons with gibbosity and rounded groove; vested with quite dense, light yellow pilosity; with dense punctation; antennae brown, bordered black.

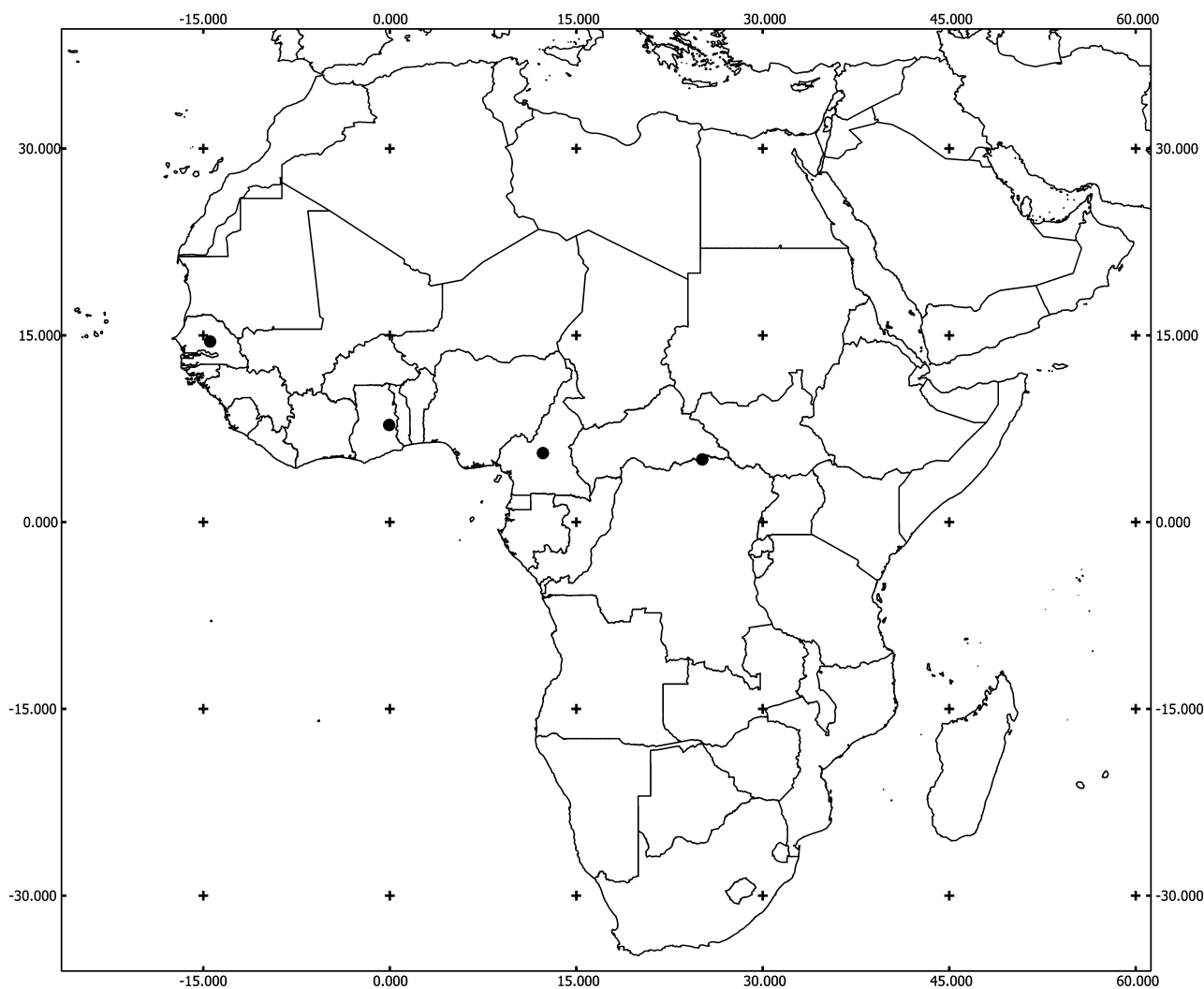
**Pronotum:** Pronotal length to width ratio 1.04:1 to 1.06:1 (average 1.05:1); light brown with dark markings in pronotal groove and on the anterior gibbosities (indistinct on the posterior gibbosities); gibbosities flattened but clearly visible; with dense yellowish and dark pilosity.

**Scutellum:** Black, vested with white setae.

**Elytra:** Elytral length to width ratio 2.14:1 to 2.24:1 (average 2.18:1); light brown with dark marking between metathoracic legs; punctation also light brown to yellow; punctation fine, circular, interstices more than twice as wide as diameter of punctation; vested with short white and slightly longer dark setae; gibbosities A, B and C with white setal tuft (D usually indistinct), E with dark setal tuft.

**Legs:** Light brown to dark yellow, femora with dark markings just before the middle and proximally; tibiae dark, especially protibiae.

**Lower surface:** Dark with some light spots; vested with white setae.



**FIGURE 11.** Distribution of *Erymanthus belzebuth*.

**Male genitalia, pygidium, ventrite VI:** Tips of tegminal lobes blunt, tegminal lobes one-sixth length of tegmen; tegminal struts broadened rapidly after one-fifth length and tapering after three-fifths, last three-tenths of struts narrow with furcate tip; phallic tip blunt; posterior side of pygidium rounded; processes of ventrite VI rather pointed.

**Distribution:** Senegal, Ghana, Cameroon, DR Congo.

**Seasonal occurrence:** Collected from October to November.

### *Erymanthus bicolor* Chapin, 1924

(Figs 12–13, 39C)

Chapin 1924: 2.

*Erymanthus concoloripennis* Pic, 1932: 5 n. syn.

Pic 1932: 5; Pic 1933: 116.

**Specimens examined:** *Erymanthus bicolor*: Type material unavailable.

*Erymanthus concoloripennis*: **Lectotype** (designated here): Musée de Congo, Sankuru : Komi, 28.III.1930, J. Ghesquière, *Erymanthus concoloripennis* mp, R. Det. DD 2224, Type, Holotype, *Erymanthus bicolor* Chap., Syn. Nov. J. J. Menier 1981 (MRAC).

**Comment on type specimen:** *Erymanthus bicolor*: Chapin lists a single type specimen (AMNH Type 28080) in his description of *E. bicolor*, it therefore (although we have not examined it) qualified as the Holotype, fixed by monotypy (ICZN 1999: Article 73.1.2). *Erymanthus concoloripennis*: As Pic makes no mention of type specimens, all *E. concoloripennis* type material are considered syntypes (ICZN 1999: Article 73.2) and available for lectotype designation (ICZN 1999: Article 74.1).

**Others:** Muséum Paris, Congo belge centr., Maniema: Kindu, L. Burgeon 1917, Individu bcp + grand que type, *E. bicolor* Chapin, Comparé au type par Jean J. Menier 1981 - Type á New York Amer. Mus. nat. Hist. (MNHN). Musée du Congo, Lulua, Kapanga, IV. 1933, G. F. Overlaet, R. Det. H 3312, *Erymanthus bicolor* Chap. (MRAC). Musée du Congo, Kafakumba, XI. 1933, G. F. Overlaet, R. Det. S. 5492, désiré, *Erymanthus bicolor* Chap. (MRAC). Gumba, 11.XI.27, A. Collart, det. Corporaal 1941, *Erymanthus bicolor* Chapin, Coll. R. I. Sc. N. B. (ISNB).

**Diagnosis:** *Erymanthus bicolor* can easily be confused with *E. diversipes*, primarily because of their very similar coloration. *Erymanthus diversipes* only has the tibiae dark blue, antennomeres 1–2 orange and antennomeres 3–11 metallic blue. Specimens of *E. bicolor* can be recognized by their orange anterior legs and orange antennae. *Erymanthus concoloripennis* is treated as a synonym because we observed no differences in external morphology or genitalia.

**Length:** (5 specimens measured) 13–16mm (average 14.6mm).

**Head:** Orange; antennae yellow to orange; frontal umbo with two grooves; with anteriorly directed flavous pilosity.

**Pronotum:** Pronotal length to width ratio 1.05:1 to 1.18:1 (average 1.11:1); orange, prebasal depression and pronotal collar laterally dark; gibbosities inconspicuous; pronotal groove quite deep; with quite dense fine punctation; with relatively dense dark and white pilosity.

**Scutellum:** Black; vested with black setae.

**Elytra:** Elytral length to width ratio 1.90:1 to 2.09:1 (average 2.00:1); nitid; with dense punctation, apical part with many gibbosities; first 2–4 rows of punctation slightly rasp-like; punctation basally fine and circular, in distinct rows, interstices smaller than diameter of punctation, apically coarse, elongate-ovate, irregularly distributed, interstices up to double diameter of punctation; posterior part with dense black and white pilosity; gibbosities A, B, C and D with dense fine punctation (sometimes with white setal tuft), E with black setae.

**Legs:** Prothoracic legs orange, tibiae slightly darker, tarsi black; other legs completely black.

**Lower surface:** Prothorax pale, remainder black, sometimes with light spots laterally on each abdominal segment.

**Male genitalia, pygidium, ventrite VI:** Tips of tegminal lobes pointed, tegminal lobes one-seventh length of tegmen; tegminal struts broadened at base, broadened even more after one-ninth length and tapering after one-

fourth lanceolate; phallic tip clavate; posterior side of pygidium almost round; processes of ventrite VI almost round.

**Distribution:** DR Congo.

**Seasonal occurrence:** Collected from November to April.



**FIGURE 12.** *Erymanthus bicolor*: (A) Aedeagus ventral, (B) Phallus lateral, (C) Tegmen dorsal, (D) Spicular fork, (E) Pygidium, (F) Ventrite VI; (scale bar 1mm).

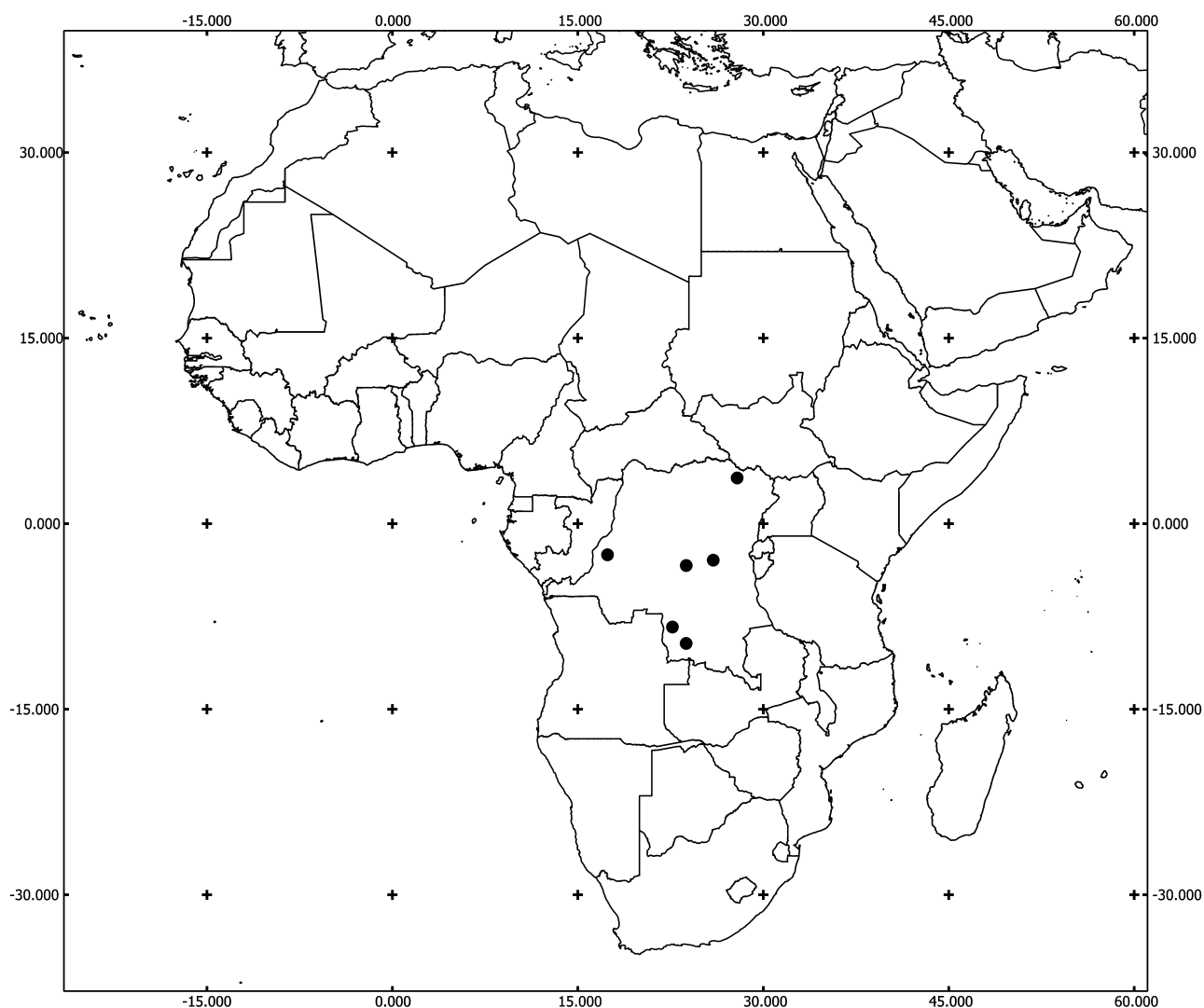


FIGURE 13. Distribution of *Erymanthus bicolor*.

***Erymanthus diversipes* Pic, 1932**

(Figs 14–15, 39D)

Pic 1932: 6; Pic 1933: 116.

**Specimens examined: Lectotype** (designated here): Musée de Congo, Kundelungus, Mme Tinant, Type, R. Det. D 2225, *Erymanthus diversipes* mp, *Erymanthus diversipes* Pic 1932, J. J. Menier det. 19, Holotype (MRAC).

**Comment on the type specimen:** As Pic (1932: 6) made no reference to the number of specimens in his description, the specimen labeled “Holotype” located in MRAC must therefore be considered a syntype (ICZN 1999: Article 73.2) and available for lectotype designation (ICZN 1999: Article 74.1). Menier’s designation was never formalised through publication.

**Others:** N. W. Rhodesia, Kashitu, N of Broken Hill, Nov. 1914, H. C. Dollman, H. C. Dollman Coll. 1919-79, J. B. Corporaal det. 1928, *Erymanthus bicolor* Chap., *Erymanthus diversipes* Pic 1932, J. J. Menier det. 1981 (BMNH). N. W. Rhodesia, Kashitu, N of Broken Hill, Nov. 1914, H. C. Dollman, H. C. Dollman Coll. 1919-79, J. B. Corporaal det. 1928, *Erymanthus bicolor* Chap., Ex Brit. Museum 1928 (RMNH). Zambia NE. 2004, 50km SW Luwingu, N of Lake Bangweulu, 27.11. Snížek, Tichý, Jakub Rolčík Collection Prague (JRCP).

**Diagnosis:** *Erymanthus diversipes* can be confused with *E. bicolor*, primarily because of their very similar coloration. Specimens of *E. bicolor* have the prothoracic legs orange and orange antennae, in *E. diversipes* only the profemora are orange and only the antennomeres 1–2 are orange, the remainder is black.

**Length:** (4 specimens measured) 9–12mm (average 11mm).

**Head:** Dark orange; antennomeres 1–2 orange to red brown, 3–11 black; frontal umbo with two grooves; with isolated long black pilosity.

**Pronotum:** Pronotal length to width ratio 1.06:1 to 1.11:1 (average 1.08:1); dark orange; pronotal groove with dark marking in the middle; posterior fringe dark; pronotal groove conspicuous, gibbosity plane; with isolated long black pilosity.

**Scutellum:** Black, with dense punctation.

**Elytra:** Elytral length to width ratio 1.88:1 to 1.97:1 (average 1.91:1); metallic blue; strongly dilated apically; punctation circular to elongate-ovate, irregularly distributed, interstices smaller than diameter of punctation; with isolated long dark pilosity; gibbosity A,B,C and E with dark setal tuft.



**FIGURE 14.** *Erymanthus diversipes*: (A) Aedeagus ventral, (B) Phallus lateral, (C) Tegmen dorsal, (D) Spicular fork, (E) Pygidium, (F) Ventricle VI; (scale bar 1mm).

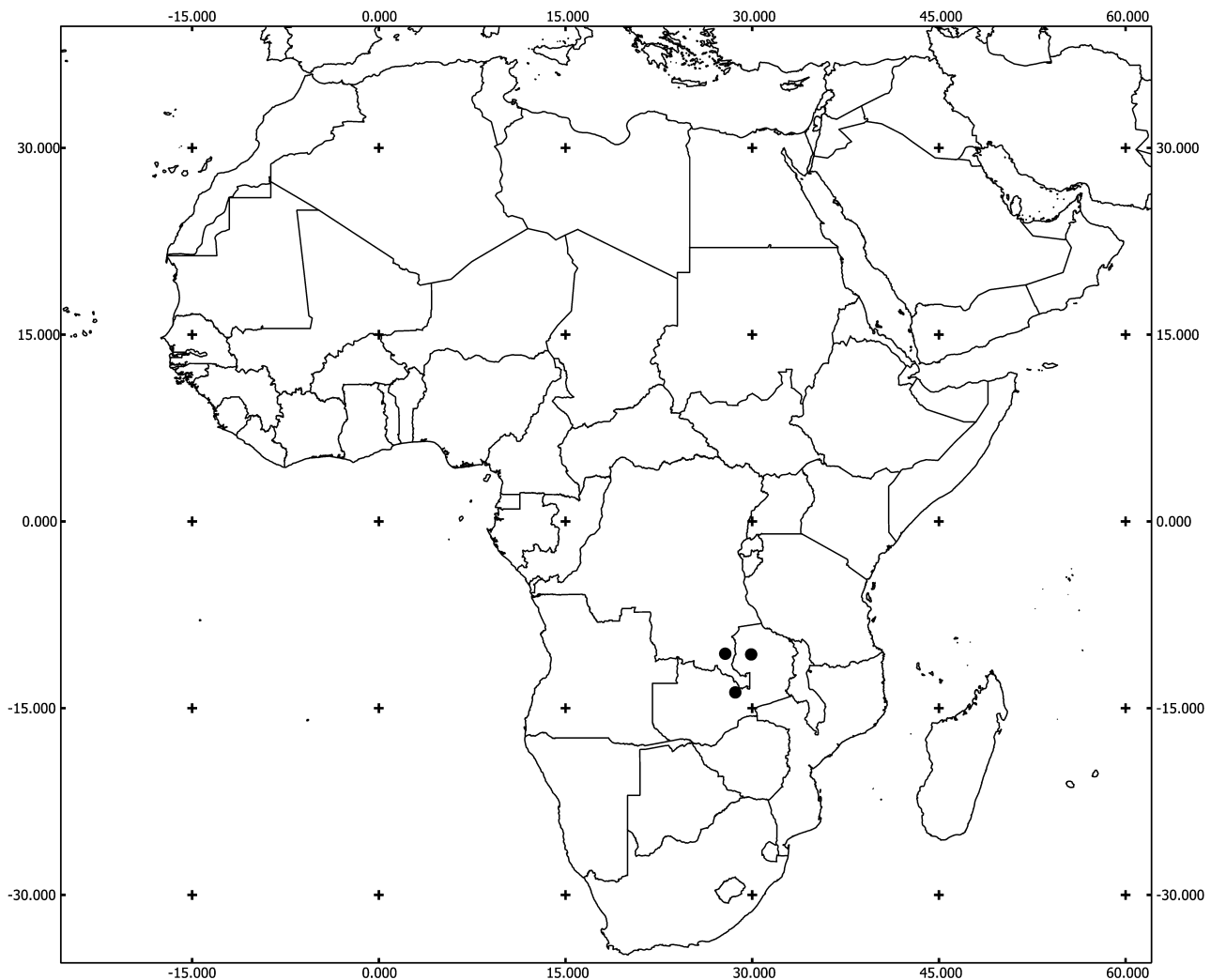
**Legs:** Metallic blue, claws brown; profemora orange, distally dark blue.

**Lower surface:** Dark with blue cast, only prothorax apically yellow to red brown.

**Male genitalia, pygidium, ventrite VI:** Tips of tegminal lobes pointed, tegminal lobes one-tenth length of tegmen; tegminal struts broadened until three-fifths length and tapering rapidly until four-fifths, last fifth narrow with furcate tip; phallic tip hooklike in lateral view; posterior side of pygidium rather angular; processes of ventrite VI blunt.

**Distribution:** Southern Congo and northern Zambia.

**Seasonal occurrence:** Collected in November.



**FIGURE 15.** Distribution of *Erymanthus diversipes*.

***Erymanthus flavonotatus* Pic, 1932**

(Figs 16–17, 39E)

Pic 1932: 5; Pic 1933: 116; Pic 1950: 160.

**Specimen examined: Lectotype** (designated here): Mayumbe, Cabra, Musée du Congo Belge, (MRAC).

**Comment on type specimen:** Pic (1932: 5) does not mention the number of specimens, the specimen of Cabra is therefore considered a syntype ICZN 1999: Article 73.2) and available for lectotype designation (ICZN 1999: Article 74.1).

**Diagnosis:** *Erymanthus flavonotatus* can be confused with *E. belzebuth*, *E. variolatus*, and *E. maculaticeps*. *Erymanthus maculaticeps* has the abdomen dark brown to black. *Erymanthus belzebuth* and *E. variolatus* have dark markings basally and around the middle of femora.

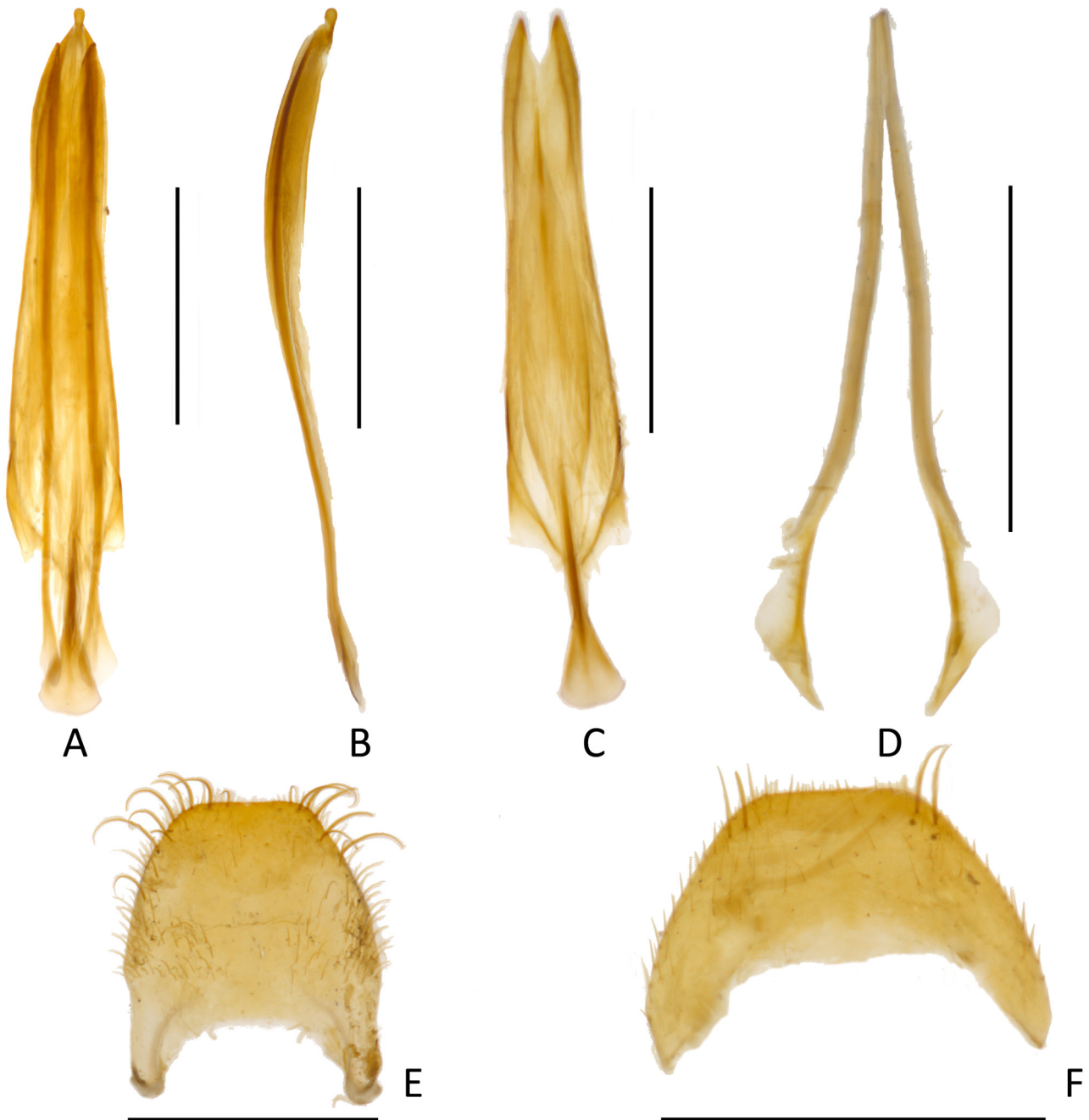
**Length:** (1 specimen measured) 10mm.

**Head:** Light brown; frontal umbo with two grooves and posterior extension; with anteriorly directed flavous pilosity.

**Pronotum:** Pronotal length to width ratio 1.05:1; light brown; gibbosities and pronotal groove inconspicuous; with dense fine punctation; with isolated flavous pilosity.

**Scutellum:** Black; vested with white setae.

**Elytra:** Elytral length to width ratio 2.01:1; lighter brown than head and pronotum, one black spot on each side in anterior half; punctation circular, coarse, first 2–4 rows slightly rasp-like, interstices half as wide as diameter of punctation, irregularly distributed; with isolated flavous pilosity; all gibbosities with white setal tuft, E not distinct, with dense fine punctation.



**FIGURE 16.** *Erymanthus flavonotatus*: (A) Aedeagus ventral, (B) Phallus lateral, (C) Tegmen dorsal, (D) Spicular fork, (E) Pygidium, (F) Ventricle VI; (scale bar 1mm).

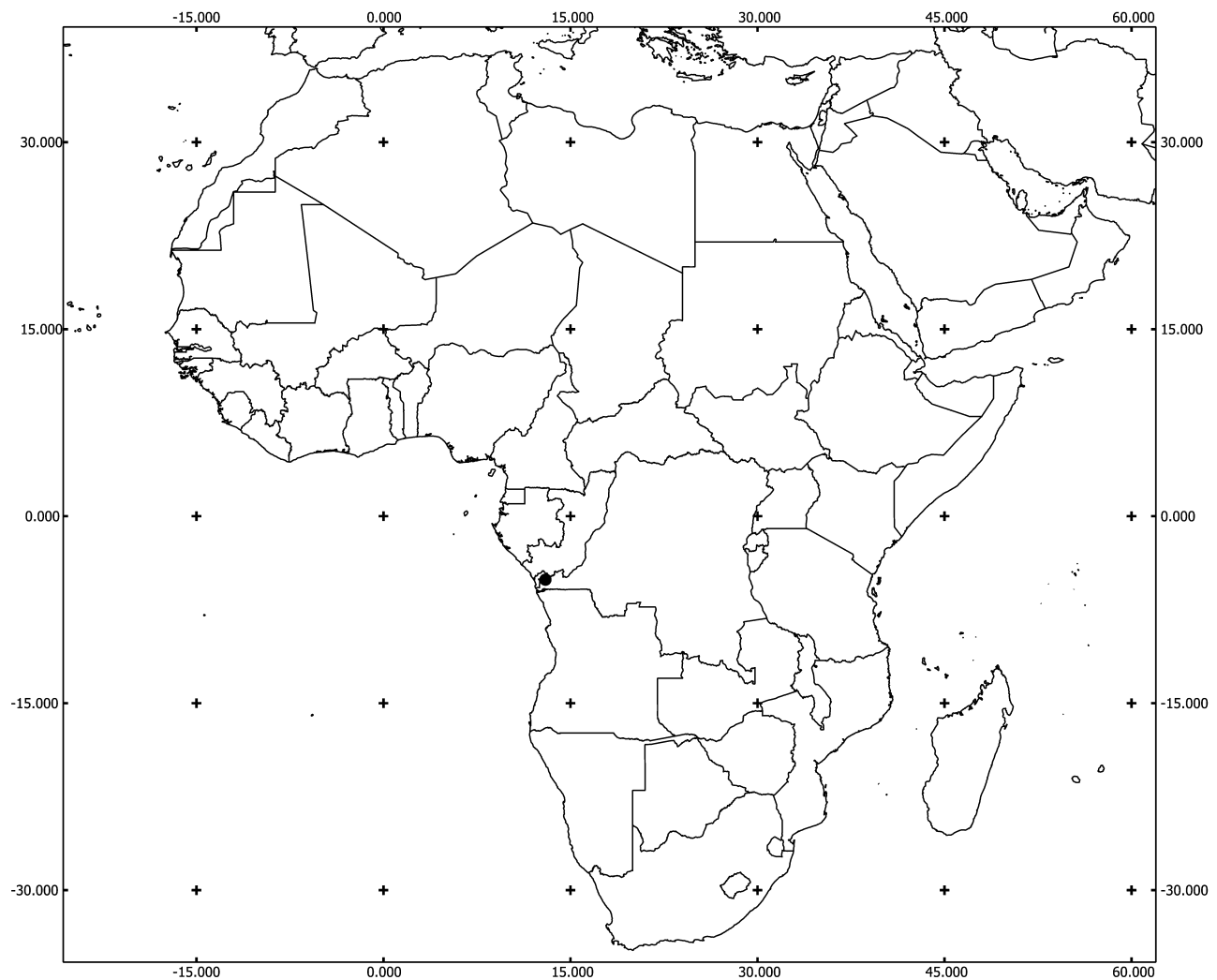
**Legs:** Light brown, tibiae darker; indication of dark spot on pro- and mesofemora, metafemora basally towards middle dark; coxae except for procoxae (with light spot) dark.

**Lower surface:** Dark brown to black, last two abdominal segments light brown, other abdominal segments with light spot laterally; meso- and metathorax with dense white pilosity.

**Male genitalia, pygidium, ventrite VI:** Tips of tegminal lobes pointed, tegminal lobes very short; tegminal struts broadened until three-sevenths length and tapering lanceolate until tip; phallic tip hooklike in lateral view; posterior side of pygidium rather angular; processes of ventrite VI pointed.

**Distribution:** DR Congo.

**Seasonal occurrence:** Not specified.



**FIGURE 17.** Distribution of *Erymanthus flavonotatus*.

### *Erymanthus gemmatus* Klug, 1842

(Figs 18–19, 39F)

Klug 1842: 327, t.1 f.6; Spinola 1844: 61, t41 f5; Imhoff 1856: t6 f33; Desmarest in Chenu 1860: t18 f4; Schenkling 1906: 282; Ekis 1975: 39.

**Specimens examined: Lectotype** (designated here): Caffraria, Krebs, Syntypus, *Erymanthus gemmatus* Klug 1842, labelled by MNHUB 2012, Hist. Coll. (Coleoptera) Nr. 17813, Zool. Mus. Berlin (ZMB). **Paralectotypes** (designated here): Caffraria, Paratype?, *Gemmatus* Klug. Mon. 327.1.6., Ex Musæo James Thomson, Muséum Paris 1952, Coll. R. Oberthür, (MNHN). Caffraria, Krebs, Syntypus, *Erymanthus gemmatus* Klug 1842, labelled by

MNHUB 2012, Hist. Coll. (Coleoptera) Nr. 17813, Zool. Mus. Berlin (ZMB). Caffraria, Krebs, Syntypus, *Erymanthus gemmatus* Klug 1842, labelled by MNHUB 2012, Hist. Coll. (Coleoptera) Nr. 17813, Zool. Mus. Berlin (ZMB).

**Comment on type specimens:** In stating “Fand sich verschiedentlich in Sendungen des Hrn. Krebs aus dem Kaffernland”, Klug (1842: 327,328) implied that there were more than one specimen he examined and therefore all type material are considered syntypes (ICZN 1999: Article 73.2) and available for lectotype designation (ICZN 1999: Article 74.1). We have designated the lectotype and three paralectotypes from specimens from type material held in ZMB and MNHN.

**Others:** Uamgebiet, Bosum, 11.–20.6.14, Tessmann S., *Erymanthus gemmatus* Klug, Museum f. Naturkunde Berlin (ZMB). Uamgebiet, Bosum, 11.–20.6.14, Tessmann S., *Erymanthus gemmatus* Klug, Museum f. Naturkunde Berlin (ZMB). Uamgebiet, Bosum, 11.–20.6.14, Tessmann S., *Erymanthus gemmatus* J. J. Menier det. 19 (ZMB). Südafrika, 8.ii.1995, KwaZulu-Natal: St. Lucia Park, Charter's Creek, 28°12' S/32°25' E, leg. F. Koch (ZMB). Cap de Bonne-Espérance, *E. gemmatus* Kl. Schenkling vid. 1901, Muséum Paris (MNHN). *Erymanthus gemmatus* Klug, Cape, Ex Musæo Parry, Muséum Paris 1952, Coll. R. Oberthür (MNHN). Chesen, Afr. Orient, Coll. Oberthür (MNHN). Klaserie-Kampersrus, 7/800m 17.XI., Transv. S.A., W. Wittmer 1983, Muséum Paris, Don de W. Wittmer 1984 (MNHN). 16m S. of Nelsspruit, XI.1965, L. Schulze, Mazoe, Mashonal., Dec. 05 GAKM, Mazoe, Mashonal'd, Dec. 05, G. A. K. Marshall, 1926 ex British Museum, Marshall Coll. 1914–554, J. B. Corporaal det. 1926 *Erymanthus gemmatus* Klug (RMNH). South Africa, E. Cape, Queenstown, Long Hill, 31.52 S 26.53 E, 2 Dec 1989, S. van Noort, South African Museum Cape Town, *Erymanthus Spinola*, 1841, det. W. Opitz, SAM-COL- A068403 (SAMC). Transvaal, Potchefst. Dist., Purck 1879, T. Ayres, *gemmatus* Kl., 1146, SAM-COL-A038085 (SAMC). Estcourt, Natal, Dec. 1896, *Erymanthus gemmatus* Klug, *Erymanthus gemmatus* Klug, J. J. Menier det. 1981, Marshall Coll. 1914–554 (BMNH). Kenya, Kilifi, 1601, J. C. M. Gardner, G4179 Jan. '56, Pres by Com Inst Ent B M 1956–30, Com. Inst. Ent. Coll. No. 14936, *Erymanthus gemmatus* Klug, J. J. Menier det. 1981 (BMNH). S. Afr., Gauteng, Cullinan Premier Mine Res., 25.40 S–28.29 E, 11.12.2001, E-Y: 3459, light trap, leg. TMSA staff (TMSA). S. Afr., Gauteng, Cullinan Premier Game Res., 25.40' S–28.29 E, 22.11.2001; E-Y: 3448, beating, leg. TMSA staff (TMSA). S. Afr., Gauteng, Cullinan Premier Mine Res., 25.40 S–28.29 E, 22.11.2001; E-Y: 3453, light trap, leg. TMSA staff (TMSA). S. Afr., Gauteng, Cullinan Premier Mine Res., 25.40 S–28.29 E, 22.11.2001; E-Y: 3453, light trap, leg. TMSA staff (TMSA). S. Afr., Gauteng, Cullinan Premier Game Res., 25.40 S–28.29 E, 16.1.2002; E-Y: 3475, light trap, leg. TMSA staff (TMSA). S. Afr., Waterberg Geelhoutbush farm, 24.22 S–27.33 E, 8.10.1995; E-Y: 3155, pyrethrum fogging, Endrödy & Bellamy, *Acacia robusta* (TMSA). S. Afr., Gauteng, Cullinan Premier Mine Game Res., 25.40 S–28.29 E, 16.1.2002; E-Y: 3475, light trap, leg. TMSA staff (TMSA). S. Afr., Gauteng, Cullinan Premier Mine Game Res., 25.40 S–28.29 E, 16.1.2002; E-Y: 3475, light trap, leg. TMSA staff (TMSA). South Africa, TVL. Pretoria, The Willows, 25.45S 28.21E, 10.xii.1995, collected at light, R. G. Oberprieler, National Coll. of Insects Pretoria, S. Afr (SANC). South Africa, TVL, D'Nyala Nat. Res., Ellisras, 23.45S 27.49E, 850m, 24–26.ix.1990, R. G. Oberprieler, National Coll. of Insects, Pretoria, S. Afr (SANC). Tanzania c.occ., 1200m, 3°25,5' N; 31°47,1' E, 100km on Kathama road, leg. L. Hálková, 24.xii.2006, Jakub Rolčík Collection Prague (JRCP). Zimbabwe-NE, 10–30km E and NE of Shamva, Nyagui river, 1998, lgt. S. Bečvář, 15.–16.xii, Jakub Rolčík Collection Prague (JRCP). RSA, Kruger NP, Numbi Gate, 8.–14.1.2007, Šafanda leg. (RGCM). Tanzania, Iringa pr., 100km NE Iringa, S07°37' E36°17', 660m, 9.1.2007, J. Halada lgt., Jakub Rolčík Collection Prague (JRCP). South Africa, TVL, D'Nyala Nat. Res., Ellisras District, 23.45S 27.49E, 8.–10.xii.1989, M. W. Mansell, Collected at light, National Coll. of Insects, Pretoria, S. Afr. (SANC)

**Diagnosis:** *Erymanthus gemmatus* can be confused with *E. transversopustulatus* **n. sp.** and *E. testaceus*. *Erymanthus testaceus* has white setae on gibbosities A, C and D. *Erymanthus transversopustulatus* **n. sp.** is 18–20mm long and has black setae on gibbosity B and black legs with two light brown crossbands on each femur.

**Length:** (29 specimens measured) 8–13mm (average 9.72mm).

**Head:** Yellow to brown with a dark triangular spot, tapering posteriorly; frontal umbo light; with short light pilosity and with isolated long dark hairs; antennae distally darker.

**Pronotum:** Pronotal length to width ratio 1.03:1 to 1.21:1 (average 1.11:1); yellow to brown, with characteristic dark pattern (Fig. 39F); broadest behind middle; gibbosities plane; with isolated punctation; with dorsally long dark, laterally white pilosity.

**Scutellum:** Black; vested with white setae.

**Elytra:** Elytral length to width ratio 1.69:1 to 2.02:1 (average 1.83:1); apical half of elytra conspicuously broader, yellow to brown, with variable dark markings; always with spots next to scutellum; punctuation in the anterior half always lighter; first 3–4 rows of punctuation slightly rasp-like; punctuation coarse, almost circular and anteriorly in distinct rows, anteriorly interstices smaller than diameter of punctuation; pilosity with long dark and short white hairs; gibbosities B and E yellow, the others brown; gibbosities A, C and E with dark and dense setal tuft, D sometimes with dark setae, B with white setal tuft.

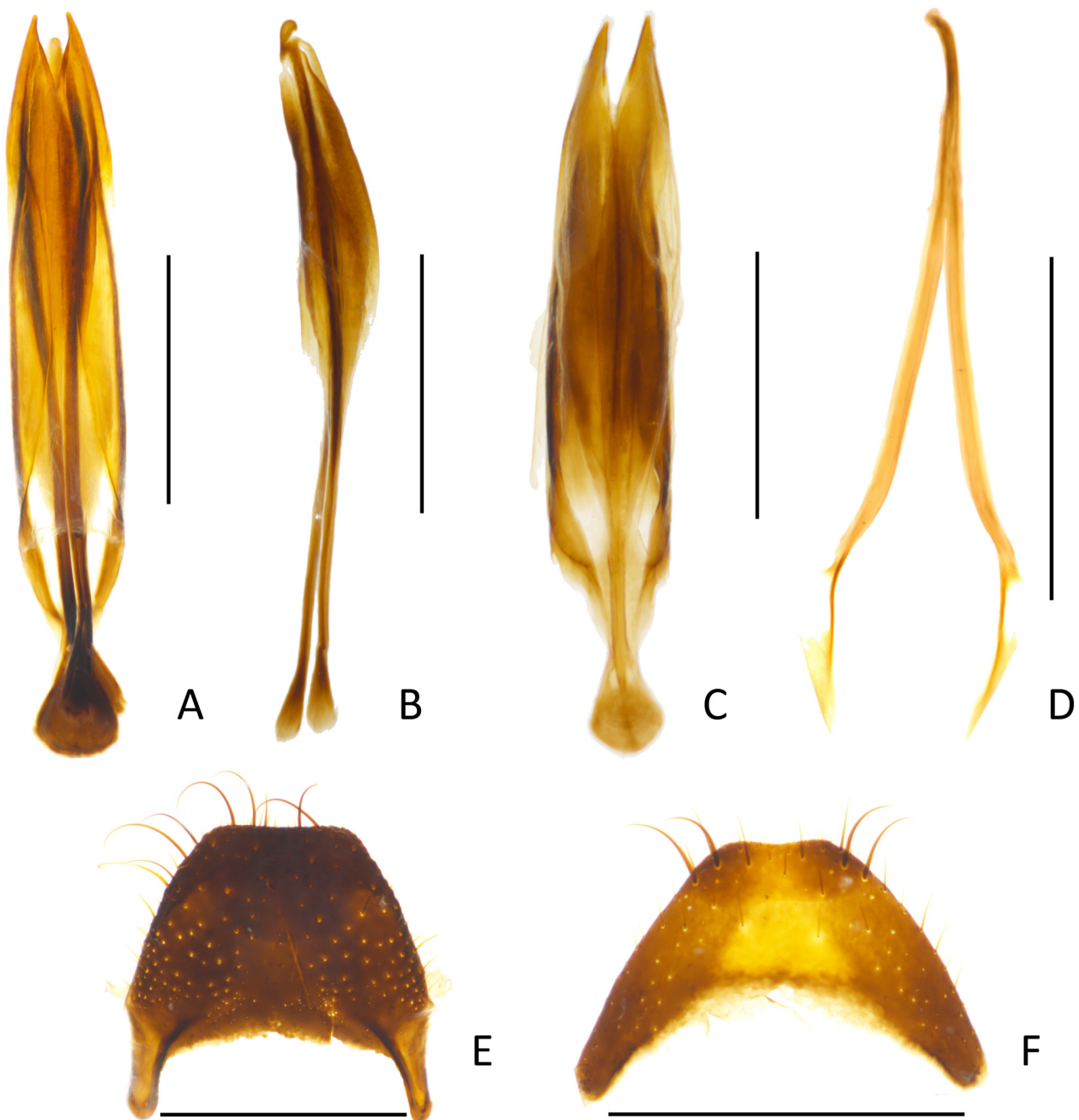
**Legs:** Yellow, tibiae proximally darker, femora with dark pattern around the middle.

**Lower surface:** Dark brown, with white pilosity.

**Male genitalia, pygidium, ventrite VI:** Tegminal lobes one-tenth of tegmen length, tips of tegminal lobes pointed; tegminal struts broadened until two-thirds of whole length and then tapering concavely; phallic tip hooklike in lateral view; posterior side of pygidium angular; tips of ventrite VI blunt.

**Distribution:** Central African Republic, Uganda, Kenya, Tanzania, Malawi, Zimbabwe, South Africa.

**Seasonal occurrence:** Collected from June to February.



**FIGURE 18.** *Erymanthus gemmatus*: (A) Aedeagus ventral, (B) Phallus lateral, (C) Tegmen dorsal, (D) Spicular fork, (E) Pygidium, (F) Ventrite VI; (scale bar 1mm).

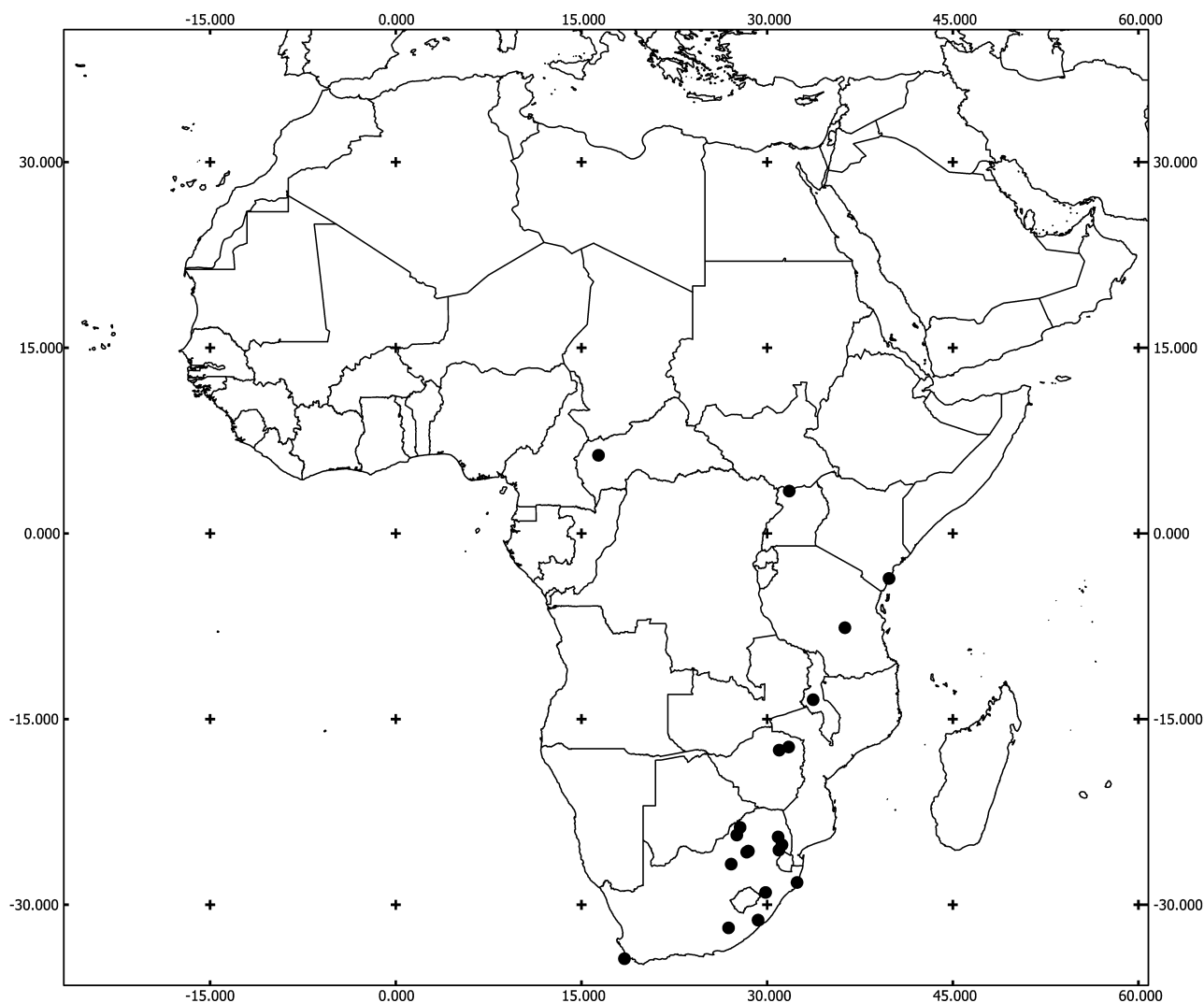


FIGURE 19. Distribution of *Erymanthus gemmatus*.

***Erymanthus horridus* Westwood, 1852**

(Figs 20–21, 40A)

Westwood 1852: 35, t24 f12; Quedenfeldt 1888: 183; Pic 1937: 106.

*ab. purpureoniger* (Murray, 1867)

Murray 1867: 319.

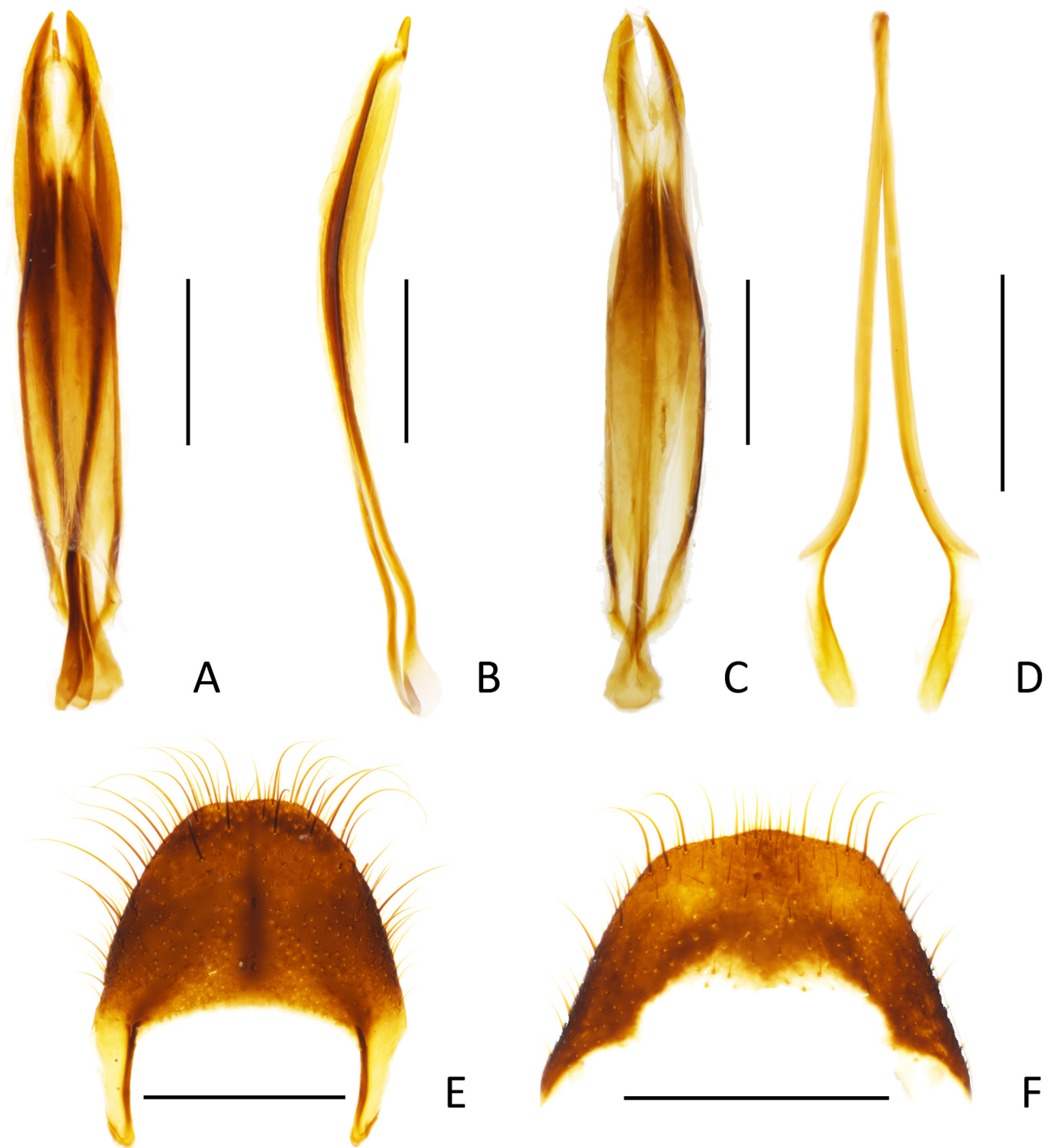
**Specimens examined: Lectotype** (designated here): H, *Erymanthus horridus* Hope ms westw Proc. Zool. Soc. PL24 + 12 (in handwriting of J.O. Westwood), Type Westwood Proc. Zool. Soc. 1852 p35 T.24 fig 12. (white label with red border), TYPE COL1644 *Erymanthus horridus* Westwood HOPE DEPT. OXFORD, HOLTYPE (red printed label). ***Erymanthus horridus ab. purpureoniger*: Lectotype** (designated here): 33048, Afr. occid. vid eat, ex Mus. Murray, Fry Coll. 1905.100., *Erymanthus horridus* Westw. Vesuvioides Thomp., Guinea, ??Syntype *Erymanthus horridus* Westw. var. *purpureoniger* Murray, J. J. Menier det. 1981 (BMNH). **Paralectotype** (designated here): Old Cal., O. Calabar. 78 19, *horridus* Westw., Pr. 30d.8.1852.35 Old Calabar, probably a Syntype of *E. horridus*, *purpureoniger* Murr (BMNH).

**Comment on the type specimens: *Erymanthus horridus*:** Westwood made no mention of type specimens in his description of *E. horridus* therefore the single type specimen held in the Oxford University Museum of Natural History has been designated as the Lectotype. ***Erymanthus horridus ab. purpureoniger*:** Murray (1867) mentioned

three specimens in his description of *var. purpureoniger* though did not designate any of them as a holotype. All *purpureoniger* type material are therefore considered syntypes (ICZN 1999: Article 73.2) and available for lectotype designation (ICZN 1999: Article 74.1).

**Others:** La Maboké, R. C. A. 20.11.69, Teocchi, Muséum Paris, Comparé au type par Jean J. Menier VII.1981, *Erymanthus horridus* J. J. Menier det. 1981 (MNHN). Afrika, A. Schmidt T., 74605, 24, *Erymanthus horridus* Westw. Determ. E. Hintz (ZMB). N. Kamerun, Joh. Albrechtshöhe, L. Conradt S., 18/11.95, 71, *Erymanthus horridus* Westw., Museum f. Naturkunde Berlin (ZMB). Togo, Amedzowe, *Erymanthus horridus* W. Ki. (ZMB). N. Kamerun, Joh. Albrechtshöhe, L. Conradt S., 28.V.–12.VI.1898, 93, *Erymanthus horridus* Westw., Museum f. Naturkunde Berlin (ZMB). N. Kamerun, Joh. Albrechtshöhe, L. Conradt S., 1897–99, 1691, *Erymanthus horridus* Westw., Museum f. Naturkunde Berlin (ZMB). Zambia, 29.iii.1993, Kafue NP, Chunga Camp, lux, leg. M. Uhlig (ZMB). Kamerun, Kribi 1890, Morgen S., *Erymanthus pustulosus*. 1888 Quedf. (ZMB). Kamerun, 1938, leg. Buhr (ZMB). Ed. Buja, Kondué, Congo Belge, Donateur 1869c, Ed. Luja, Luxbg. VII.1907, 4952, 1927 ex Naturh. Mus. Luxemburg, S. Schenkling det. *Erymanthus horridus* Westw. (RMNH). L. Conradt, N. Kamerun, Johann Albrechtshöhe, Zool. Mus. Berlin 1922: *Erymanthus horridus* Westw. (RMNH). Kamerun, det. Schenkling. *Erymanthus horridus* Westw., *Erymanthus horridus* 5. .x Westw. (RMNH). Gabon, Ivindo, Coll Le Moul, Naturaliste, Paris, J. B. Corporaal det. 1925: *Erymanthus horridus* Westw. var. *Purpureoniger* Murray (RMNH). Musée du Congo, Katanga, 1929, (M. Zimmerhans.) (MRAC). Musée du Congo, Sankuru: Kondue, Coll. Ed. Luja, *horridus* Westw. (MRAC). Musée du Congo, Elisabethville, v–1912, Dr. Bequaert, *Erymanthus horridus* Westw., R. Det. F 405 (MRAC). Coll. E. Ross, Berlin N.113, Jaunde, Kamerun, Sammlung P. Lepesme, Eing. Nr. 2, 1949, *Erymanthus horridus* Westw. (ZMUH). Lamto (Toumodi), Côte d'Ivoire, 1.5.XII.1986, Côte d'Ivoire, C. Girard Coll. (RGCM). Côte d'Ivoire, Dimbokro, Museum Paris, Le Moul. 1916, *Erymanthus horridus* Westw. P. Lesne vid. (MNHN). West Afrika, Togo, Ex Musæo E. Hintz, *Erymanthus horridus* Westw. Molard (MNHN). Musée du Congo, Mongbwalu (Kilo), 1939, Mme Scheitz, *horridus* wesw., *nigripes* Hintz von, Museum Paris, Coll. M. Pic (MNHN). La Maboké, R. C. A. 20.11.69, Teocchi, Museum Paris (MNHN). La Maboké, R. C. A. 20.11.69, Teocchi, Museum Paris, (MNHN). La Maboké, R. C. A. 20.11.69, Teocchi, Museum Paris (MNHN). Côte d'Ivoire, Taï, Nov. 78, G. Couturier leg., Piège lumineux (MNHN). Côte d'Ivoire, Taï, 4/78, G. Couturier leg., Piège lumineux (MNHN). Côte d'Ivoire, Taï, Nov. 78, G. Couturier leg., Piège lumineux (MNHN). Côte d'Ivoire, reg. de Taï, 14.2.1985, G. Couturier & V. van Zeijst Réc. Orstom-Paris, Mission Unesco, Environs Village de Gouleako, forêt Decondaire de 17 ans, Biotope n° 21 (MNHN). Nimba, XII.1953, 103 P (MNHN). Lagos, Ex coll. Baden, Muséum Paris 1952, Coll. R. Oberthür (MNHN). Lamto (Toumodi), Côte d'Ivoire, 15–20.X.1966, Cl. Girard, Museum Paris (MNHN). Lamto (Toumodi), Côte d'Ivoire, 5–10.IX.1968, Côte d'Ivoire, C. Girard Coll. (MNHN). Lamto (Toumodi), Côte d'Ivoire, 1.5.XII.1986, Côte d'Ivoire, C. Girard Coll. (MNHN). Southern Nigeria, exempl def suichi, *Erymanthus horridus* onvoime, Museum Paris, Coll. M. Pic (MNHN). Côte d'Ivoire, 26.XII.56, P. Cachan (MNHN). Wydah, R. P. Menager, Muséum Paris 1952, Coll. R. Oberthür (RGCM). Boguma, W. africa, Coll. Kraatz, Schenkling det. (SDEI). Foubot, Avril66 (SDEI). N. W. Rhodesia: Solwezi District, 26°20'E. 12°10'S, Solwezi XI.1917. H. C. Dollman, H. C. Dollman Coll. 1919-79, *Erymanthus horridus* J. J. Menier det 1981 (BMNH). *Erymanthus horridus* Westw. X, *Erymanthus horridus* Westw. ♀, J. J. Menier det. 1981 (BMNH). Lagos Dist., S. Nigeria, 11.1948, W. E. S. Merrett, W. E. S. Merret. B. M. 1962-270, exBMNH, *Erymanthus horridus* Westw. J. J. Menier det. 19, no abdomen on Hv specimen J J M. 81, ♀ (BMNH). Soil-Zoological Exp. Congo-Brazzaville, Sibiti IRHO, park, 28.11.1963, No. 287, by lamplight, leg. Endrödy-Younga, M. Budapest (ISNB). Old Cal., Mus. Zool. Polonicum Warszawa 12/45 (ZMPA). Kamerun, Barombi, Conradt, Mus. Zool. Polonicum Warszawa 12/45 (ZMPA). Coll. I. R. Sc. N. B., Gabon, Tchimbele, Vallée de la Mbei, 30.XI.–10.XII.2004, Leg. P. Limbourg & Ph. Oremans (RGCM). Rep. Centrafic., La Maboke, P. L. 12-11-1969, P. Teocchi rec., coll. R. Gerstmeier CRG Munich (RGCM). RCI.1.87, Alepe, Jakub Rolčik Collection Prague (JRCP). RCI.1.87, Alepe, *Erymanthus ater* Hintz, J. Rolčik det. 2004, Jakub Rolčik Collection Prague (JRCP). Rep. Centrafic., La Maboke, 197, N'Gombé-Docko Réc., Jakub Rolčik Collection Prague (JRCP). Kossou—Yamoussokro (Côte d'Ivoire), 15-Gen-1972, legit: A. Bondinelli (MZUF).

**Diagnosis:** *Erymanthus horridus* can be confused with *E. revoili*, *E. ater* and *E. pustulosus*. *Erymanthus revoili* has the pronotal gibbosities conical and a conspicuous, rasp-like, coarse punctation. *Erymanthus pustulosus* has a blunt phallic tip and blunt processes of ventrite VI. In *E. ater* the antennomeres 9–11 are longer than the antennomeres 1–8. *Erymanthus horridus* is recognizable by the longitudinal ridge in the pronotal groove, the conical phallic tip and the strongly pointed tips of ventrite VI.



**FIGURE 20.** *Erymanthus horridus*: (A) Aedeagus ventral, (B) Phallus lateral, (C) Tegmen dorsal, (D) Spicular fork, (E) Pygidium, (F) Ventrite VI; (scale bars 1mm).

**Length:** (37 specimens measured) 15–24mm (average 19,05mm).

**Head:** Black, antennae lighter (testaceous); frontal umbo with irregular structure (deep grooves and wrinkles); with isolated flavotestaceous pilosity.

**Pronotum:** Pronotal length to width ratio 0.97:1 to 1.14:1 (average 1.04:1); black; gibbosities conspicuously elevated, but smooth; pronotal groove with longitudinal ridge; with fine punctation; with flavotestaceous pilosity.

**Scutellum:** Black; smooth in the middle, with laterally directed flavotestaceous setae.

**Elytra:** Elytral length to width ratio 2.05:1 to 2.53:1 (average 2.31:1); black, sometimes with testaceous markings (especially on gibbosities); with fine, circular and isolated punctation in the basal half, interstices at least

twice as wide as diameter of punctation, irregularly distributed; with isolated flavotestaceous pilosity; gibbosities yellow to red-brown, with brown to black setae.

**Legs:** Coxae, femora and tibiae dark brown to black.

**Lower surface:** Black, sometimes brown with yellow lateral spots; with dense white pilosity.

**Male genitalia, pygidium, ventrite VI:** Tips of tegminal lobes blunt, tegminal lobes one-fourth length of tegmen; tegminal struts broadened until three-fourths length then tapering until furcate tip; phallic tip conical; posterior side of pygidium rounded; processes of ventrite VI extremely pointed.

**Distribution:** Guinea, Ivory Coast, Ghana, Togo, Benin, Nigeria, Cameroon, Central African Republic, Gabon, Congo, DR Congo, Zambia.

**Seasonal occurrence:** Collected from January to December.

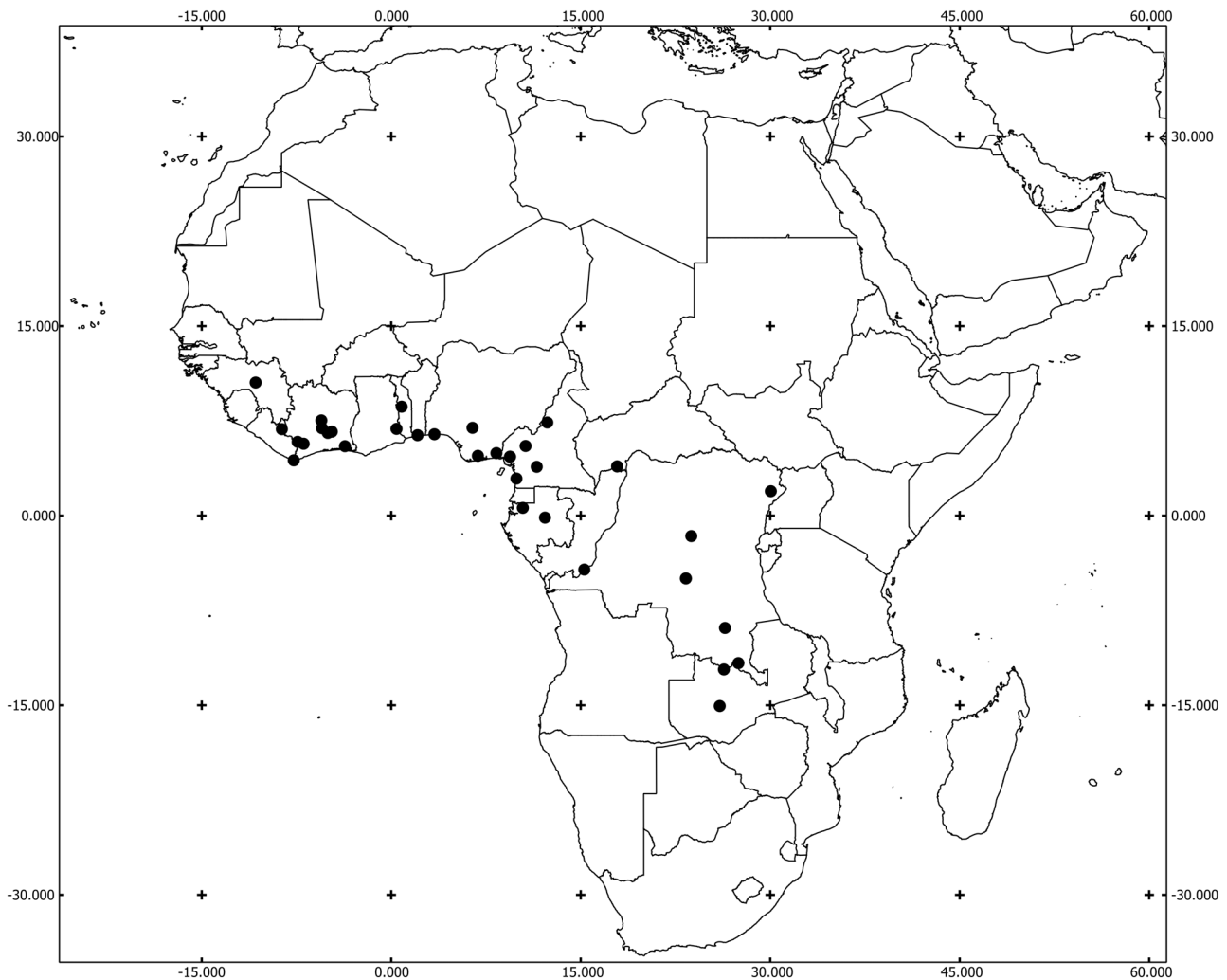


FIGURE 21. Distribution of *Erymanthus horridus*.

***Erymanthus maculaticeps* Pic, 1949**

(Figs 22–23, 40B)

Pic 1949: 310.

**Specimens examined: Lectotype** (designated here): IFAN-1948 Ziele ubena, IFAN-1948 Holas et Descaper, Type, *Erymanthus maculaticeps* nsp (MNHN).

**Comment on type specimen:** Pic (1949: 310) does not mention number of specimens he examined, therefore the specimen of Ziela is considered a syntype (ICZN 1999: Article 73.2) and is available for lectotype designation (ICZN 1999: Article 74.1).



**FIGURE 22.** *Erymanthus maculaticeps*: (A) Aedeagus ventral, (B) Phallus lateral, (C) Tegmen dorsal, (D) Spicular fork, (E) Pygidium, (F) Ventricle VI; (scale bars 1mm).

**Others:** Joveri 6, Adipodoumé B. - Côte d'Ivoire, Type, Muséum Paris, don Orsum 1951, *Erymanthus joveri* nsp (MNHN; the species name “*joveri*” was never published). Côte d'Ivoire, Adipodoumé, mois 12.1947, Coll. Ch. Primot, Muséum Paris 1950, Coll. Ch. et J. Primot (MNHN). Côte d'Ivoire, Taï, 25-1-55, P. Cachan (MNHN). Côte d'Ivoire, Adipodoumé, mois 9.1947, Coll. Ch. Primot, Muséum Paris 1950, Coll. Ch. et J. Primot (MNHN). Côte d'Ivoire, Taï, Mars.78, G. Couturier leg., Piège lumineux (MNHN). Côte d'Ivoire, reg. de Taï, 18.3.1985, G. Couturier & V. van Zeijst Réc. Orstom-Paris, Mission Unesco, Environs Village de Gouleako, Friche a Magaranga Hurifolia de 6 ans, Biotope n° 24 (MNHN). Côte d'Ivoire, Lamto, 17.X.1982, Leroux Rec., Muséum Paris (MNHN). Guinea: Kindia, Mt. Gangan 1000m, 29.10.1984, leg: Murzin, *Erymanthus testaceus* Pic, J. Rolčík det.

2004, Jakub Rolčík Collection Prague (JRCP). RCI.1.87, Buneo, Jakub Rolčík Collection Prague (JRCP). Côte d'Ivoire, reg. de Taï, 18.3.1985, G. Couturier & V. van Zeijst Réc. Orstom-Paris, Mission Unesco, Environs Village de Gouleako, Friche a Magaranga Hurifolia de 6 ans, Biotope n° 24 (RGCM).

**Diagnosis:** *Erymanthus maculaticeps* can be confused with *E. belzebuth*, *E. semirufus*, *E. variolatus* and *E. flavonotatus*. *Erymanthus semirufus*, *E. flavonotatus* and *E. variolatus* have at least two flavotestaceous abdominal segments. *Erymanthus belzebuth* and *E. variolatus* have dark markings basally and just before the middle of femora. *Erymanthus maculaticeps* is clearly recognizable by its dark abdomen and the basally darker femora.

**Length:** (7 specimens measured) 11–14mm (average 12.43mm).

**Head:** Light brown, posteriorly darker; frontal umbo with two grooves; with anteriorly directed flavous pilosity; antennomeres from A3 onwards black.

**Pronotum:** Pronotal length to width ratio 1.07:1 to 1.15:1 (average 1.12:1); with dense fine punctation; light brown; gibbosities and pronotal groove inconspicuous; with isolated flavous pilosity.

**Scutellum:** Black; vested with white setae.

**Elytra:** Elytral length to width ratio 2.05:1 to 2.24:1 (average 2.19:1); elytra lighter brown than head and pronotum, one black spot on each side in basal half; punctation circular to slightly elongate-ovate, first 2–4 rows slightly rasp-like, basally distinct rows visible, interstices half to same width as diameter of punctation; with isolated flavous and black pilosity; gibbosities A, B, C and D with white setal tuft, E with dense fine punctation.

**Legs:** Light brown, tibiae darker; indication of a dark spot on pro- and mesofemora, mesofemora basally darker, its metafemora dark from base towards middle; coxae except for procoxae (with light spot) dark.

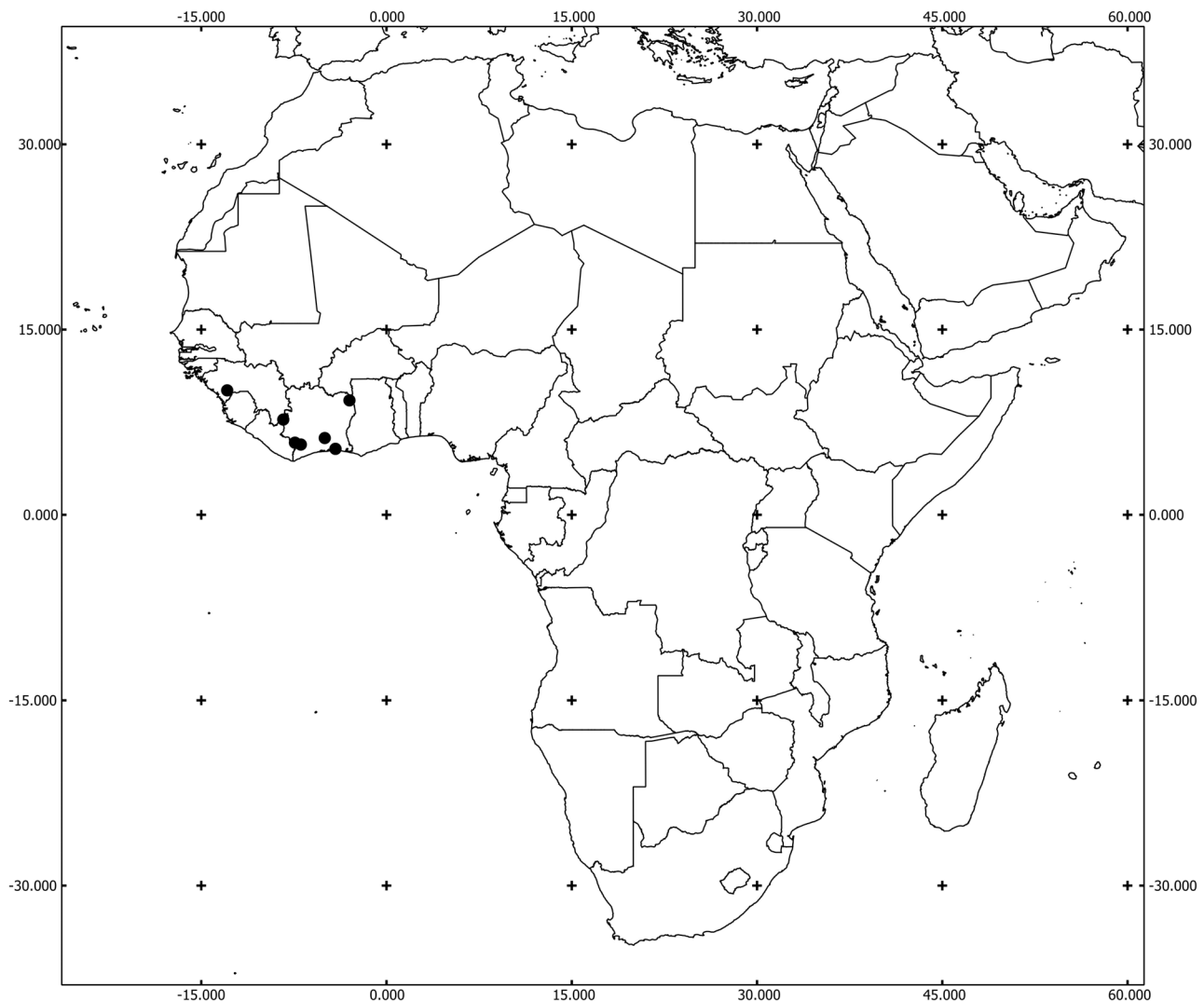


FIGURE 23. Distribution of *Erymanthus maculaticeps*.

**Lower surface:** Dark brown to black, each abdominal segment with a pale spot laterally; meso- and metathorax black, with dense white pilosity.

**Male genitalia, pygidium, ventrite VI:** Tips of tegminal lobes pointed, tegminal lobes one-eighth length of tegmen; tegminal struts narrow, broadened until three-sevenths length and tapering lanceolate until tip; phallic tip clavate; posterior side of pygidium rounded; processes of ventrite VI neither pointed nor blunt.

**Distribution:** Guinea, Ivory Coast.

**Seasonal occurrence:** Collected from September to March.

*Erymanthus melanurus* Kuwert, 1893

(Figs 24–25, 40C)

Kuwert 1893: 479.



**FIGURE 24.** *Erymanthus melanurus*: (A) Aedeagus ventral, (B) Phallus lateral, (C) Tegmen dorsal, (D) Spicular fork, (E) Pygidium, (F) Ventrite VI; (scale bars 1mm).

**Specimens examined: Holotype:** Fr. Congo, Kuilu, Mocquerys, Holotype, 1892, Ex Musæo, W. Rothschild, 1899, Museum Paris 195-, Coll. R. Oberthür (MNHN).

**Comment on the type specimen:** The single specimen mentioned by Kuwert (1893: 479) from Kuilu, Congo from the Tring museum (now in MNHN), can be considered the holotype, fixed my monotypy (ICZN 1999: Article 73.1.2).

**Others:** Muséum Paris, Congo belge centr., Maniema: Kindu, L. Burgeon, J. J. Menier, 1981 (MNHN). Togo, Conradt, Coll. Kraatz, Schenkling det., D. Ent. Inst. DAHLEM, 1922 (RMNH). Togo, Bismarckburg, L. Conradt S., 89. (ZMB). Togo, Bismarckburg, 21.3.–30.4.93, L. Conradt S., Schenkling det. (ZMB). Guin., Coll. Kraatz, Schenkling det., Col - 03107 (SDEI). Brit. Uganda, Grauer, Coll. v. Bennigsen, Schenkling det., Col - 03108 (SDEI). Ansila, vesuvioides Thomson, ???, Ex Musæo Parry, Muséum Paris 1952, Coll. R. Oberthür (MNHN).

**Diagnosis:** *Erymanthus melanurus* can be confused with *E. vesuvioides*. *Erymanthus vesuvioides* is 12–20mm long and its metafemora are black. *Erymanthus melanurus* is 9–12mm long and can be recognized by its light brown femora.

**Length:** (8 specimens measured) 9–12mm (average 10.5mm).

**Head:** Light brown; frontal umbo with two rounded grooves; with dark pilosity posteriorly, anteriorly with white pilosity; antennae yellow.

**Pronotum:** Pronotal length to width ratio 1.11:1 to 1.12:1 (average 1.12:1); light brown; pronotal groove sometimes darker; gibbositities inconspicuous.

**Scutellum:** Black; vested with white setae.

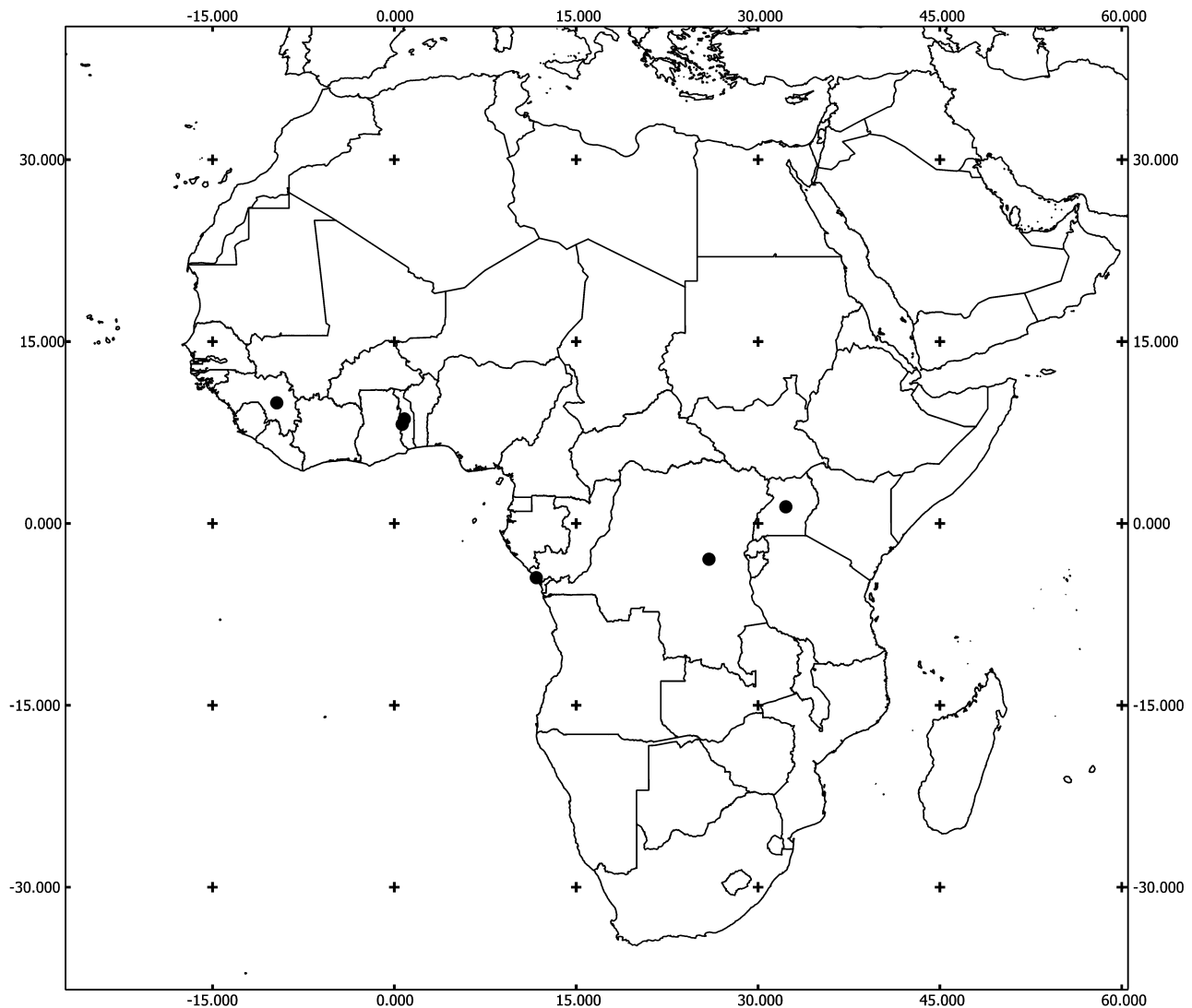


FIGURE 25. Distribution of *Erymanthus melanurus*.

**Elytra:** Elytral length to width ratio 2.02:1 to 2.15:1 (average 2.09:1); basal half light brown, apical half dark brown to black; punctuation large, circular to slightly elongate-ovate, interstices half to same width as diameter of punctuation, punctuation in more or less regular rows; elytral base with black and flavous pilosity, apically partly with dense white and flavous pilosity; gibbosities pale, gibbosities A, B, C and D with dense white setal tuft, E with black setae.

**Legs:** Light brown, sometimes dark markings on the femora, tibiae slightly darker.

**Lower surface:** Dark brown to black with indication of light spots lateral of each abdominal segment; with white pilosity.

**Male genitalia, pygidium, ventrite VI:** Tips of tegminal lobes blunt, tegminal lobes very short; tegminal struts broadened until three-sevenths length and tapering lanceolate until tip; phallic tip very blunt; posterior side of pygidium rounded; processes of ventrite VI rather pointed.

**Distribution:** Guinea, Togo, Congo, DR Congo, Uganda.

**Seasonal occurrence:** Collected from March to April.

### ***Erymanthus pustulosus* Quedenfeldt, 1888**

(Figs 26–27, 40D)

Quedenfeldt 1888: 182.

*Erymanthus variegatus* (Pic 1950), **n. syn.**

Pic 1950: 160.

**Specimens examined:** *Erymanthus pustulosus*: **Lectotype** (designated here): Kassai, 4/9, Eurymanthus pustulosus Af. c. Qdf, Ex Musæo Quedenfeldt, Muséum Paris 1952, Coll. R. Oberthür, Holotype, pustulosus H.Type (MNHN). *Erymanthus variegatus*: **Lectotype** (designated here): Holotypus variegatus Pic, Coll. Mus. Congo, Ruanda: Kibungu, X-XII.1937, R. Verhulst, R. Det. FF. 5621, désiré, Erymanthus variegatus M. Pic (MRAC).

**Comment on type specimens:** Neither Quedenfeldt (1888: 182) nor Pic (1950: 160) mentioned number of examined specimens, therefore all type material are syntypes (ICZN 1999: Article 73.2) and available for lectotype designation (ICZN 1999: Article 74.1) as it cannot be assumed that these taxa are based on a single specimen. The specimens from MNHN and MRAC are designated lectotypes.

**Others:** Dahomey, Muséum Paris, Coll. M. Pic (MNHN). Percy Fyfe Nat. Res., Potgietersrus Dist., 18.–20.1.1971, R. Jones, Eurymanthus pustulosus (Quedenfeldt), det. G. Ekis 1985 (MNHN). Côte d'Ivoire, Lamto, 10.V.1982, Leroux Rec., Muséum Paris, lumière (MNHN). Côte d'Ivoire, Dimbokro, Museum Paris, Le Moul. 1916 (MNHN). Senegal, Ex Musæo Maiszech, Muséum Paris 1952, Coll. R. Oberthür (MNHN). Dahomey, Muséum Paris, Coll. M. Pic (MNHN). Beira Port. E. A., 28.9.1899, G. A. K. Marshall. 1908-212, Erymanthus horridus Westw., Erymanthus pustulosus Qued. ♂, J. J. Menier det. 1981 (BMNH). van Someren, Garissa Bura, Tana Riv: 11 48., V. G. L. van Someren Collection, Brit. Mus. 1959-468. (BMNH). N. W. Rhodesia, Kashitu, N of Broken Hill, Nov. 1914, H. C. Dollman, H. C. Dollman Coll. 1919-79, J. B. Corporaal det. 1928, Erymanthus pustulosus Qued., Erymanthus pustulosus Qued. ♀, J. J. Menier det. 1981, tree trunk (BMNH). Br. Somaliland: W. A. Macfadyen. B. M. 1929-398, ex BMNH, Erymanthus pustulosus, J. J. Menier det. 1981, ♂ (BMNH). Rhodesia, J. A. W. Lucas, St. Luke's Hospital, ca 30km S E Lupane, 17-12-1975 (RMNH). N. W. Rhodesia, Kashitu, N of Broken Hill, Jan. 1915, H. C. Dollman, H. C. Dollman Coll. 1919-79, J. B. Corporaal det. 1928, Erymanthus pustulosus Qued., ex Brit. Museum 1928, tree trunk (BMNH). Natal, Popp, 17814 (ZMB). Kamerun, Sina, L. Colin. IV.12 (ZMB). Zimbabwe, 3.xii.1993, 20°13'S/31°00'E, Kyle Rec. Park at Lake Mutirikwe, lux, leg. J. Deckert (ZMB). Namibia: b. Omaruru, Farm Otjua, 5.–7.X.1991, leg. U. Göllner (ZMB). Südafrika: Transvaal, 24°05' S / 30°15' E, Lekgalameetse Nat. Res., 21.xii.1995, leg. F. Koch (ZMB). Central Malawi. Lilongwe Dist. Dzalanyama forest 1300m, 14-29 S–33-39 E, XI-XII.2005/I. G. 31.593, Don C. Joly, Coll. I. R. Sc. N. B. (ISNB). Kenya, Eastern, E of Thika 29.12., Mwingi, Nguni, Lgt. Snížek 2007, Coll. I. R. Sc. N. B. (ISNB). Kenya SE 12.12. Voi 2007, S Foot Sagala, Lgt. Snížek Mts., Coll. I. R. Sc. N. B. (ISNB). Kenya SE 12.12. Voi 2007, S Foot Sagala, Lgt. Snížek Mts., Coll. I. R. Sc. N. B. (ISNB). Kenya, 9/10.V.2000, Hola, Werner & Lizler leg. (SMNS). Kenya XII.93, Sagala Hills, Werner leg. (SMNS). Kenya, 12.V.2001, E. Prov., Hola, Werner & SMRZ leg.

(SMNS). Namibia, Popa Falls, Kavango, 24.xi.1993, 18°07' S/21°35' E, leg.: F. Koch (SMNS). RSA: Limpopo Prov., Lekgalameetse Nature Reserve, 800-1000 m, 27.XI.–1.XII.2008, leg. W. Schawaller (SMNS). RSA, KwaZulu-Natal, Ndumo NR, Campside, 90 m, 10.II.–13.II.2010, leg. D. Bartsch & Berg (SMNS). S. Afr.; Mpumalanga, Ezemvelo, 1374m, 25.42 S–29.01 E, 27.1.2004; E-Y: 3608, vegetation, highveld, leg. TMSA Staff (TMSA). Zimbabwe, MasvingoPro, LakeMutirikweLake Kyle, 20.13 S–31.00 E, 27.11.2006; E-Y: 3736, light trap, leg. Gussmann, Müller (TMSA). Zimbabwe, MasvingoPro, LakeMutirikweLake Kyle, 20.13 S–31.00 E, 27.11.2006; E-Y: 3736, light trap, leg. Gussmann, Müller (TMSA). S. Afr.; Mpumalanga, Skukuza, 25.00 S–31.35 E, 26.11.–5.12.1993, leg. Krüger, Dunning (TMSA). S. Afr.; Krüger Nat. Pk, Skukuza, 25.00 S–31.35 E, 16.–24.12.1993, light trap, Krüger, Dunning (TMSA). S. Afr.; Gauteng, Cullinan, Windy Brow, 25.41 S–28.30 E, 8.1.2002; E-Y: 3466, groundtraps, leg. TMSA staff (TMSA). S. Afr.; North Wes Prov., Tswaing, 25.24 S–28.06 E, December; M. Krüger (TMSA). S. Afr.; North West Prov., Tswaing, 25.24 S–28.06 E, December; M. Krüger (TMSA). S. Afr.; Gauteng Prov, Tswaing, 25.24 S–28.06 E, 24.11.2003; E-Y: 3614, light trap, leg. TMSA staff (TMSA). S. Afr.; Waterberg, Geelhoutbush farm, 24.22 S–27.33 E, 7.12.1998; E-Y: 3251, at light, leg. CL Bellamy (TMSA). S. Afr.; Waterberg, Dorndraai Lodge, c.24.38 S–27.48 E, 18.–22.12.2004, leg. M. Krüger, (TMSA). S. Afr.; Limpopo Prov., Soutpan, near Vivo, 10.1.2009; leg. T. Beyers (TMSA). S. Afr.; Mpumalanga Prov, Der Brochen, 25.04 S–30.07 E, 7.12.2005, at light, leg. James Harrison (TMSA). Elisabethville, Novbre 1948, Ch. Seydel, C19866, Coll. Mus. Congo, R. Det. H. 5763, *Erymanthus horridus* West. (MRAC). South Africa, KZN Tembe Elephant Res., 27.03S 32.25E, 100m, 28.x.–02.xi.1995, M. W. Mansell, light trap, National Coll. of Insects, Pretoria, S. Afr. (SANC). South Africa, TVL, D'Nyala Nat. Res., Ellisras District, 23.45S 27.49E, 18.–20.xii.1987, B. Grobbelaar, National Coll. of Insects, Pretoria, S. Afr. (SANC). South Africa, TVL, D'Nyala Nat. Res., Ellisras District, 23.45S 27.49E, 17.–20.xii.1987, M. W. Mansell, Light, National Coll. of Insects, Pretoria, S. Afr. (SANC). South Africa, TVL, D'Nyala Nat. Res., Ellisras District, 23.45S 27.49E, 850m, 24.–26.ix.1990, R. G. Oberprieler, National Coll. of Insects, Pretoria, S. Afr. (SANC). South Africa, TVL, D'Nyala Nat. Res., Ellisras District, 23.45S 27.49E, 18.–20.xii.1987, B. Grobbelaar, *Erymanthus* det. J. R. Mawdsley 2008, National Coll. of Insects, Pretoria, S. Afr. (SANC). South Africa, TVL, D'Nyala Nat. Res., Ellisras District, 23.45S 27.49E, 18.xii.1987, B. Grobbelaar, E. v. d. Linde, Collected at light, National Coll. of Insects, Pretoria, S. Afr. (SANC). South Africa, MPU, Kampersrus, near Hoedspruit, 24°30'S 30°53'E, 10.xi.2005, 547m, W. Breytenbach, Collected using a light trap, National Coll. of Insects, Pretoria, S. Afr. (SANC). South Africa, TVL, Kruger Nat. Park, Renosterkoppies, 25°07'S 31°36'E, Collected at light, National Coll. of Insects, Pretoria, S. Afr. (SANC). South Africa, TVL, Loskopdam Nat. Res., 25°25'S 29°20'E, 12.–13.xii.1985, C. G. E. Woolman, National Coll. of Insects, Pretoria, S. Afr. (SANC). South Africa, TVL, Loskopdam Nat. Res., 25°25'S 29°20'E, 12.–13.xii.1985, I. M. Millar, National Coll. of Insects, Pretoria, S. Afr. (SANC). South Africa, TVL, Pretoria, Garden of Union Buildings, 25°45'S 28°12'E, 25.II.1982, NC Grobbelaar, National Coll. of Insects, Pretoria, S. Afr. (SANC). South Africa, Natal, Mkuze, 27°37'S 32°03'E, XII.1981, P. Reavell, National Coll. of Insects, Pretoria, S. Afr. (SANC). South Africa, TVL, Soutpan, Pretoria Dist., 25°24'S 28°06'E, 09.xii.1987, M. W. Mansell, Collected at light, National Coll. of Insects, Pretoria, S. Afr. (SANC). South Africa, TVL, Soutpan, Pretoria Dist., 25°24'S 28°06'E, ii.1985, M. W. Mansell, Collected at light, National Coll. of Insects, Pretoria, S. Afr. (SANC). South Africa, TVL, Swadini, Blydepoort Nat. Res., 24°32'S 30°54'E, 26.–29.i.1987, B. Grobbelaar, Collected at light, National Coll. of Insects, Pretoria, S. Afr. (SANC). South Africa: Natal, Umhlanga Rocks, 3106E 2944S, XI.83, P. E. Reavell, 10m, light, National Coll. of Insects, Pretoria, S. Afr. (SANC). Swa/Namibia, Caprivi, Katima Mulilo, SE17 24 Ad 10–11.I.1985, Univ. Pretoria, Dept. Entomol. Tour '85, National Coll. of Insects, Pretoria, S. Afr. (SANC). N Rhodesia, 16.XI.1941, Dr. W. Eichler, 15, ex coll. Witold Eichler, Inst. Zool. P. A. N. Warszawa 64/63 (ZMPA). Kenya: central-south, Kibwezi Forest, Spring Camp, 28.–29.11.2004, leg. Puchner (CRSW). Kenya: central-south, Kibwezi Forest, Spring Camp, 28.–29.11.2004, leg. Puchner (CRSW). Ethiopia, Oromia, 17 km SEE Yabelo, N04°36', N04°51' 1580m, 17.5.12, leg. Egger M. (CMEW). St. Lucia, Natal 1/87, Werner leg., coll. R. Gerstmeier CRG Munich (RGCM). Somalia, Afgoi, IV.1978, A. Simonetta! Museo "La Specola" ex coll. J. Simonetta Num. Mag. 2812 (MZUF). Kenya, 12.1993, Sagala Hills, leg. K. Werner, coll. R. Gerstmeier CRG Munich (RGCM). RSA, KwaZulu-Natal, SW Magudu, 27°34'S–31°35'W, 4.–5.1.2009, P. Schüle leg., coll. R. Gerstmeier CRG Munich (RGCM). Coll. I. R. Sc. N. B., Congo Belge, Mwadingusha, XI–XII–1957, leg. N. Magis (RGCM). Tanzania, 16.xii.1999, near Mitundo, Dodoma prov., Werner + Lizler lgt., Jakub Rolčík Collection Prague (JRCP). Tanzania, 16.xii.1999, near Mitundo, Dodoma prov., Werner + Lizler lgt., Jakub Rolčík Collection Prague (JRCP). Tanzania, 16.xii.1999, near Mitundo, Dodoma prov., Werner + Lizler lgt., Jakub Rolčík Collection Prague (JRCP).



**FIGURE 26.** *Erymanthus pustulosus*: (A) Aedeagus ventral, (B) Phallus lateral, (C) Tegmen dorsal, (D) Spicular fork, (E) Pygidium, (F) Ventrte VI; (scale bars 1mm).

Tanz.- Dodoma pr., 60km N Kondo, S04°36' E35°46', 1570m, 19.12.2006, J. Halada lgt., Jakub Rolčík Collection Prague (JRCP). Zambia, Liwinstone, 24.12.2002, Smrž P. lgt., *Erymanthus horridus* Westw., J. Rolčík det. 2004, Jakub Rolčík Collection Prague (JRCP). Zambia, Liwinstone, 24.12.2002, Smrž P. lgt., *Erymanthus horridus* Westw., J. Rolčík det. 2004, Jakub Rolčík Collection Prague (JRCP). Zambia - SW, 30km NW Kazangula, 23.XII.2002, J. Halada leg., Jakub Rolčík Collection Prague (JRCP). RSA, Maphutoland, SW of Emangusi, 29.1.2003, M. Snižek lgt., Jakub Rolčík Collection Prague (JRCP). RSA, Noth. Transvaal, Kruger NP, Punda Maria, xii.2005, J. Hlásek lgt., Jakub Rolčík Collection Prague (JRCP). RSA, Noth. Transvaal, Kruger NP, Punda Maria, xii.2005, J. Hlásek lgt., Jakub Rolčík Collection Prague (JRCP). S. Africa, S25.46 E27.54, 25km W Pretoria, Saartjiesnek, S. Bílý leg. 16.–18.12.1997, Jakub Rolčík Collection Prague (JRCP). Swaziland, 20.–21.xii.2003, Mlawula Game Res., Werner & Lizler lgt., Jakub Rolčík Collection Prague (JRCP). Zimbabwe c.9.–

11.12., Mushandike Sanct (Masvingo env.) 1998, S. Bečvář lgt., (RGCM). Zimbabwe, centr, 20kmW Ngezi Park, Kwekwe, 30.11.1998, leg. M. Halada, Jakub Rolčik Collection Prague (JRCP). Kenya, Hola, 9.–10.5.2000, Werner lgt., Jakub Rolčik Collection Prague (JRCP). Kenya, Sagala Hills, XI.1993, Werner leg., Jakub Rolčik Collection Prague (JRCP). Kenya, XI.93, Sagala Hills, Werner leg., Jakub Rolčik Collection Prague (JRCP). Zambia NW, 90 km Solwezi E of Chisasa, 2005 18.XI., Snížek lgt, Collection Vladimír Beneš (JRCP). Kenya, Sagala Hills, XI.1993, Werner leg., Collection Vladimír Beneš (JRCP). Kenya SE, 12.12. Voi 2007, s Foot Sagala, lgt. Snížek Mts., Collection Vladimír Beneš (RGCM). Kenya, Eastern, E of Thika 29.12., Mwingi, Nguni, Lgt. Snížek 2007, Collection Vladimír Beneš (JRCP). Kenya, Eastern, E of Thika 29.12., Mwingi, Nguni, Lgt. Snížek 2007, Collection Vladimír Beneš (JRCP). Kenya, Coast, N of Garsen, 6.12.2007, lgt. Snížek, Collection Vladimír Beneš (JRCP). Zambia NW, E Mutumbwe (NW Kasempa), 15.XI.2005, Snížek, Collection Vladimír Beneš (JRCP). Zambia NW, 80 km SSW of Solwezi, 13.XI.2005, Snížek lgt., Collection Vladimír Beneš (JRCP). Zambia, o. Northern prov., Chipona fāls, 5.–8.xi.2002, 30km of Chinaseí, F. a. L. Kantner lgt., Collection Vladimír Beneš (JRCP).

**Diagnosis:** *Erymanthus pustulosus* can be confused with *E. revoili*, *E. ater* and *E. horridus*. *Erymanthus revoili* has the pronotal gibbositics conical and a conspicuous rasp-like coarse punctation. In *Erymanthus ater* the antennomeres 9–11 are longer than the antennomeres 1–8. *Erymanthus horridus* has a longitudinal ridge in the pronotal groove, a conical phallic tip and strongly pointed tips of ventrite VI. *Erymanthus pustulosus* is recognizable by the characteristic maculation of the pronotum and the elytra. *Erymanthus variegatus* is treated as a synonym because we observed no differences in external morphology of genitalia.

**Length:** (59 specimens measured) 11–20mm (average 14.69mm).

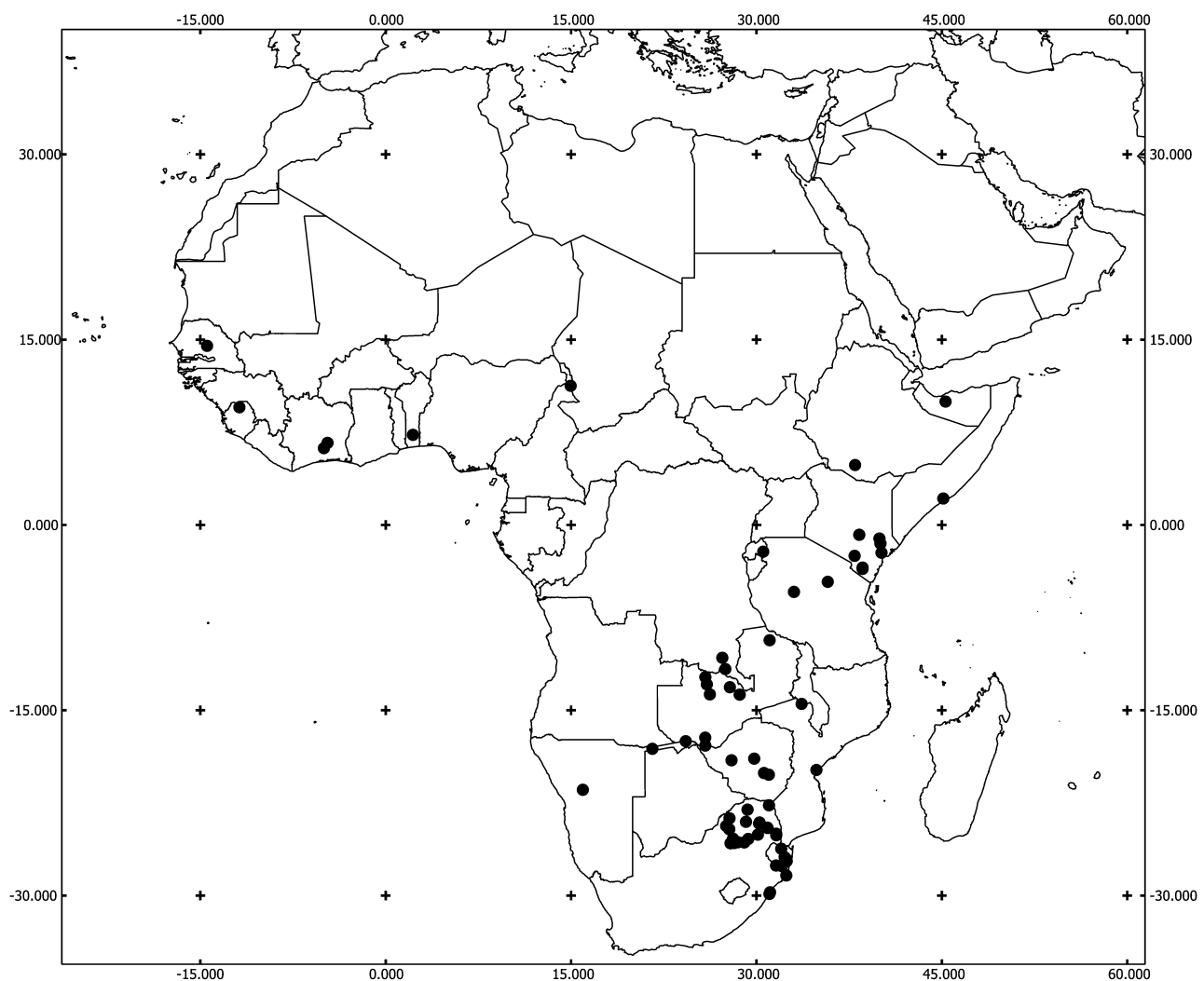


FIGURE 27. Distribution of *Erymanthus pustulosus*.

**Head:** Black, antennae brown to black; frons with two gibbosities; with anteriorly directed flavotestaceous and black pilosity; posterior gibbosity with fine punctation; antennomere 11 elongate.

**Pronotum:** Pronotal length to width ratio 0.86:1 to 1.16:1 (average 1.07:1); black with a characteristic brown maculation (Fig. 40D); pronotal groove shallow, gibbosities conspicuously elevated; with isolated flavotestaceous and black pilosity; with isolated fine punctation.

**Scutellum:** Brown; vested with flavotestaceous setae.

**Elytra:** Elytral length to width ratio 2.07:1 to 2.67:1 (average 2.25:1); dark brown to black, with light brown and brown maculation; punctation widely distributed, irregular, brown; in the middle with fine punctation, lateral punctation coarse, punctation circular, width of interstices variable; with isolated brown pilosity; gibbosities yellow to brown, all gibbosities with black setal tuft.

**Legs:** Coxae, femora and tibiae black.

**Lower surface:** Black; dense fine punctation; with flavous pilosity.

**Male genitalia, pygidium, ventrite VI:** Tips of tegminal lobes blunt, tegminal lobes one-fourth length of tegmen; tegminal struts broadened after one-eighth of length and tapering after three-sevenths, broad furcate tip; phallic tip blunt; posterior side of pygidium rounded; processes of ventrite VI rather blunt.

**Distribution:** Senegal, Sierra Leone, Ivory Coast, Benin, Cameroon, Ethiopia, Somalia, Kenya, DR Congo, Rwanda, Tanzania, Zambia, Mozambique, Zimbabwe, Namibia, Swaziland, South Africa.

**Seasonal occurrence:** Collected from January to December.

### ***Erymanthus revoili* Fairmaire, 1887**

(Figs 28–29, 40E)

Fairmaire 1887: 163; Kolbe 1897: 223.

**Specimens examined: Lectotype** (designated here): Zanguebar, Ousagara, Révoil 1886, Muséum Paris, 2199 86, *Erymanthus Revoili*, Type, Holotype (MNHN).

**Comment on type specimen:** Fairmaire (1887: 163) does not mention number of specimens, therefore the specimen of Ousagara is available for lectotype designation (ICZN 1999: Articles 73.2 & 74.1).

**Others:** Région de M'Pala, Tanganika, R. P. Guillemé, *Erymanthus pustulosus* Qued., Muséum Paris, Coll. M. Pic, *Erymanthus revoili* ♀ nov., J. J. Menier det. 1981 (MNHN). Punda Milia, Krugerpark, 111.1960, C. K. Brain (MNHN). Südafrika, 31.i.1995, KwaZulu-Natal, N'dumu Game Res., 26°55' S/32°19' E, leg. F. Koch (ZMB). Südafrika, 31.i.1995, KwaZulu-Natal, N'dumu Game Res., 26°55' S/32°19' E, leg. F. Koch (ZMB). R. S. Africa, 2.–3.ii.1994, 27°36'S/32°13'E, Natal, Mkuze NP, lux, leg. M. Uhlig (ZMB). R. S. Africa, 2.–3.ii.1994, 27°36'S/32°13'E, Natal, Mkuze NP, lux, leg. M. Uhlig (ZMB). Zimbabwe, 1.–5.xii.1993, 20°13'S/31°00'E, Kyle Rect. Park at Lake Mutirikwi, lux, leg. M. Uhlig (ZMB). Mozambique; SofalaP Gorondosa Nat. Pk 24m, 18.58 S–34.21 E, 19.12.2005, E-Y: 3707, day collecting & at light, leg. Gussmann, Müller (TMSA). Zimbabwe, MasvingoPro, LakeMutirikweLake Kyle, 20.13 S–31.00 E, 27.11.2006; E-Y: 3736, light trap, leg. Gussmann, Müller (TMSA). S. Afr: KrugerNat. Pk, Skukuza, 25.00 S–31.35 E, 26.11–5.12.1993, at light, Krüger, Dunning (TMSA). S. Africa: Natal #5G, Mkuze: Camp, 27°40' S: 32°19' E 30m, Date: 10/02/1994, Coll: K. R. Cradock, National Coll. of Insects, Pretoria, South Africa, Ex NMSA, April 2002 (SANC). South Africa, TVL., Kruger Nat. Park, Pafuri, 22.26S 31.12E, 264m, 20–24.i.1985, N. C. Pienaar, National Coll. of Insects, Pretoria, S. Afr. (SANC). South Africa, KZN Mkuze Game Reserve, 27°36'S 32°13'E, xii.1987, PE Reavell, At light at night, National Coll. of Insects, Pretoria, S. Afr. (SANC). Hartley, Mash. 12.95, Hartley, Mashonal'd, Dec. 1895, Marshall Coll. 1914-554., *Erymanthus revoili* Fairm. 1887, ♀, Comparé à l'Holotype, J. J. Menier det. 1981 (BMNH). Zambia NW, E of Chisasa, W of Solwezi, 24.10.2008, lgt. Snížek, Coll. I. R. Sc. N. B. (ISNB). Zambia NW, NW Kasempa, E of Mutumbwa, 5.11.2008, lgt. Snížek, Coll. I. R. Sc. N. B. (ISNB). Zambia NW, NW Kasempa, E of Mutumbwa, 5.11.2008, lgt. Snížek, Coll. I. R. Sc. N. B. (ISNB). Coll. I. R. Sc. N. B., Congo Belge, Mwadingusha, XI-XII-1957, leg. N. Magis, *Erymanthus Spinola*, 1841, det. W. Opitz (ISNB). Mozambique - C, 15km SE Sowe, 21°13' S 34°40' E, 18.–19.12.2005, J. Halada lgt., Jakub Rolčík Collection Prague (JRCP). Zambia NW, Chibvika env., 17.–18.xi.2003, Smrž lgt., Jakub Rolčík Collection Prague (JRCP). Tanzania, 16.xii.1999, near Mitundo, Dodoma prov., Werner + Lizler lgt., Jakub Rolčík Collection Prague (JRCP). Tanzania, 16.xii.1999, near Mitundo, Dodoma

prov., Werner + Lizler lgt., Jakub Rolčík Collection Prague (JRCP). Zambia W, 40km W Kawana, 22.–23.xi.2003, Smrž lgt., Jakub Rolčík Collection Prague (JRCP). Zambia NW, NW Kasempa, E of Mutumbwe, 5.11.2008, lgt. Snížek, Collection Vladimír Beneš (JRCP). Kenya, Coast, N of Garsen, 6.12.2007, lgt. Snížek, Collection Vladimír Beneš (JRCP). Zambia NW, 50 km E of Mwinilunga, 28.10.2008, Snížek, Collection Vladimír Beneš (RGCM). Zambia NW, 90 km Solwezi E of Chisasa, 2005 18.XI., Snížek lgt, Collection Vladimír Beneš (RGCM).

**Diagnosis:** *Erymanthus revoili* can be confused with *E. ater*, *E. horridus* and *E. pustulosus*. *Erymanthus ater* is recognizable by the long antennomeres 9–11. *Erymanthus horridus* has gibbositities with testaceous setal tuft. *Erymanthus pustulosus* has black setal tuft on gibbosity D. *Erymanthus revoili* is recognizable by the conical pronotal gibbositities, conspicuous rasp-like punctation and characteristic tegminal struts.



**FIGURE 28.** *Erymanthus revoili*: (A) Aedeagus ventral, (B) Phallus lateral, (C) Tegmen dorsal, (D) Spicular fork, (E) Pygidium, (F) Ventrte VI; (scale bars 1mm).

**Length:** (19 specimen measured) 12–16mm (average 13.32mm).

**Head:** Black, sometimes lighter; antennomeres 1–8 brown to dark brown, antennomeres 9–11 black; frons with flattened gibbosity; with anteriorly directed pilosity.

**Pronotum:** Pronotal length to width ratio 0.96:1 to 1.06:1 (average 1.00:1); light brown to yellow, with characteristic black markings (Fig. 40E); dorsal gibbosities conspicuously conical; with isolated brown pilosity.

**Scutellum:** Black, vested with white setae.

**Elytra:** Elytral length to width ratio 2.14:1 to 2.50:1 (average 2.33:1); dark brown with diaphanous crossbands; strongly dilated apically; with conspicuously rasp-like punctation in basal half, at basal margin with a prominent cone, punctation circular, interstices very variable, punctation irregularly distributed; with isolated dark pilosity; gibbosities A, B, C and E with black setal tuft, D with white setae.

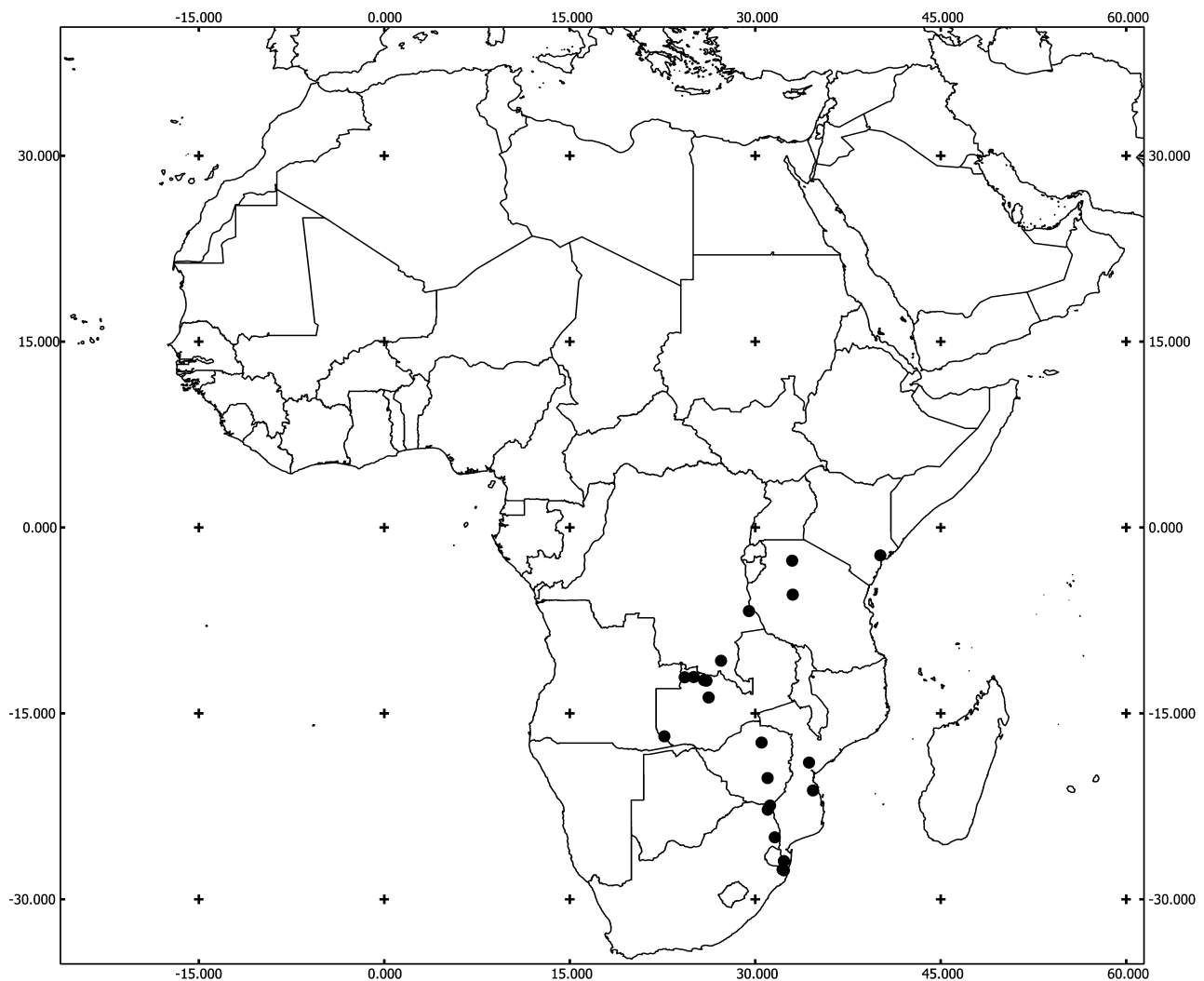
**Legs:** Dark brown, femora distally lighter; tibiae partly with long setae.

**Lower surface:** Dark brown with fine punctation; with short white pilosity.

**Male genitalia, pygidium, ventrite VI:** Tips of tegminal lobes blunt, tegminal lobes one-fifth length of tegmen; tegminal struts broadened after one-seventh of length and tapering after four-sevenths, last one-seventh of struts narrow with dichotomous tip; phallic tip hook-like; posterior side of pygidium rounded; processes of ventrite VI rather pointed.

**Distribution:** Kenya, Tanzania, DR Congo, Zambia, Zimbabwe, Mozambique, South Africa.

**Seasonal occurrence:** Collected from October to February.



**FIGURE 29.** Distribution of *Erymanthus revoli*.

*Erymanthus semirufus* Kuwert, 1893, n.stat.  
(Figs 30–31, 40F, 41A)

*Erymanthus horridus* var. *semirufus* Kuwert, 1893  
Kuwert 1893: 479.



**FIGURE 30.** *Erymanthus semirufus*: (A) Aedeagus ventral, (B) Phallus lateral, (C) Tegmen dorsal, (D) Spicular fork, (E) Pygidium, (F) Ventricle VI; (scale bar 1mm).

**Specimens examined:** **Lectotype** (designated here): Kuilu, Fr. Congo, Mocquerys, 1892, Ex Musæo W. Rothschild 1899, Type, v. *semirufus* Kuw. I fut. 12.lg. XXXVII 1893 p 479! Type! *horridus semirufus* Type ♀, Muséum Paris 1952, Coll. R. Oberthür (MNHN). **Paralectotypes** (designated here): Kuilu, Fr. Congo, Mocquerys, 1892, Ex Musæo W. Rothschild 1899, Type *Erymanthus horridus* Westw. var. *semirufus* Kuw. Cotype, *Erymanthus horridus semirufus* Kuwert, 1893 ZMAN type 2259.1 (RMNH). Kuilu, Fr. Congo, Mocquerys, 1892, Ex Musæo

W. Rothschild 1899, horridus Hoju Congo, horridus semirufus ♀, Muséum Paris 1952, Coll. R. Oberthür (MNHN). Kuilu, Fr. Congo, Mocquerys, 1892, horridus semirufus Kuw. (MNHN). Kuilu, Fr. Congo, Mocquerys, 1892, (MNHN). Kuilu, Fr. Congo, Mocquerys, 1892 (MNHN).

**Comment on type specimens:** Kuwert (1893: 479) wrote about several specimens with different coloration to *E. horridus* though did not designate one as holotype, therefore all type specimens should be treated as syntypes (ICZN 1999: Article 73.2) and, as such, are available for lectotype designation (ICZN 1999: Article 74.1).

**Others:** Cameroon, Bitey la River, 3000 feet, Muséum Paris 1952, Coll. R. Oberthür (MNHN). Congo, Muséum Paris, Coll. Sédillot 1935 (MNHN). Mt Ngoaékélé (1125m), Cameroon, 25-V-1976, Ph. Daige (MNHN). Kamerun, Mungo (ZMB). Musée du Congo, Kasai Kondue, Leohard, *Erymanthus variolatus* Brême, R. Det. E 405 (MRAC). Cameroun Centre, v.1996, lgt. Desfontaine, Jakub Rolčik Collection Prague (JRCP). Cameroon centr., V.96 (RGCM).

**Diagnosis:** *Erymanthus semirufus* is clearly recognizable by its characteristic elytral coloration.

**Length:** (13 specimens measured) 17–20mm (average 18.62mm).

**Head:** Testaceous to dark brown, antennae from antennomere A2 or A3 onwards increasingly darker to black; frontal umbo with inconstant grooves; with isolated flavous and black pilosity; with very dense fine punctation.

**Pronotum:** Pronotal length to width ratio 1.02:1 to 1.13:1 (average 1.09:1); light brown; gibbositities elevated, with transverse wrinkles around pronotal groove; with fine punctation and flavous pilosity.

**Scutellum:** Testaceous to black; vested with flavotestaceous setae.

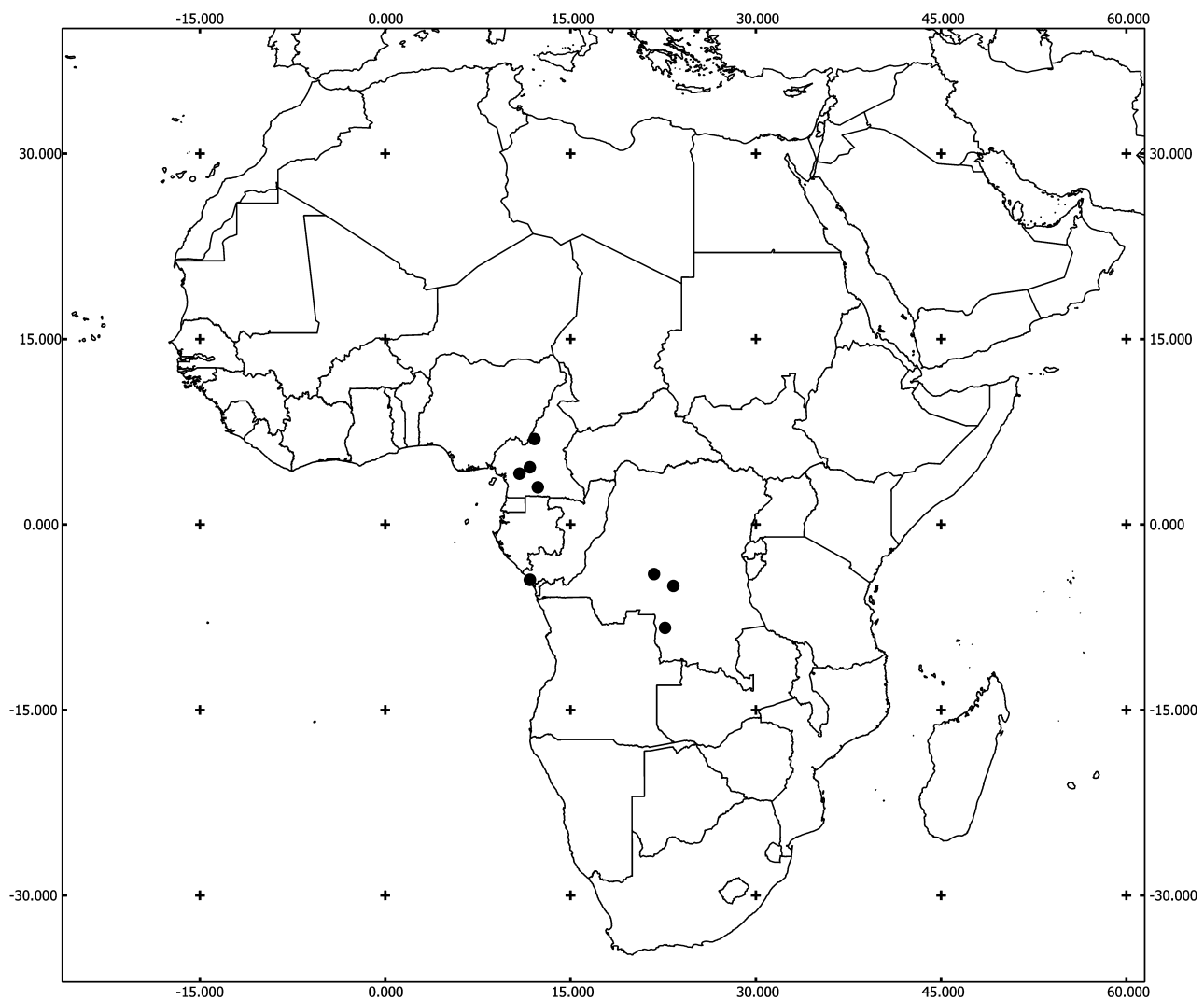


FIGURE 31. Distribution of *Erymanthus semirufus*.

**Elytra:** Elytral length to width ratio 1.89:1 to 2.14:1 (average 2.01:1); basal half black with a transverse flavotestaceous spot in the middle, apical half flavotestaceous; punctation circular to elongate-ovate, shoulder with rasp-like punctation, width of interstices variable, irregularly distributed; with isolated black pilosity, in posterior half with dense white pilosity; all gibbosities with white setal tuft.

**Legs:** Femora at least distally flavotestaceous, remainder black.

**Lower surface:** Black, abdomen flavotestaceous; with white pilosity.

**Male genitalia, pygidium, ventrite VI:** Tips of tegminal lobes blunt, tegminal lobes very short; tegminal struts broadened until three-eighths length and tapering lanceolate until tip; posterior side of pygidium rounded; processes of ventrite VI long but rather blunt.

**Distribution:** Cameroon, Congo, DR Congo.

**Seasonal occurrence:** Collected in May.

### ***Erymanthus testaceus* Pic, 1950**

(Figs 32–33, 41B)

Pic 1950: 159.

**Specimens examined: Lectotype** (designated here): Coll. Mus. Congo, Mayidi, -1942, Rév. P. Van Eyen, Holotypus testaceus Pic, R. Det. DD. 5621, *Erymanthus testaceus* nsp (MRAC). **Paralectotypes** (designated here): Coll. Mus. Congo, Bas–Congo–Mayidi, 1942, R. P. Van Eyen, R. Det. I. 5763, *Erymanthus testaceus* Pic (MRAC). Coll. Mus. Congo, Mayidi, -1942, Rév. P. Van Eyen, Paratypus, R. Det. EE. 5621 (MRAC). Coll. Mus. Congo, Mayidi, 1942, Rév. P. Van Eyen, Syntype, Muséum Paris, Coll. M. Pic, testaceus nm (MNHN). Coll. Mus. Congo, Mayidi, 1942, Rév. P. Van Eyen, Syntype, Muséum Paris, Coll. M. Pic, PLT ♂ (MNHN).

**Comment on the type specimens:** As Pic (1950) made no reference to type specimens in his description, all ‘type’ material should be treated as syntypes (ICZN 1999: Article 73.2) and, as such, are available for lectotype designation (ICZN 1999: Article 74.1). We have designated the specimen from MRAC as lectotype and the other specimens from MNHN and MRAC as paralectotypes.

**Others:** Tchibanga (Gabon), G. Le Testu, *Erymanthus* sp. (MNHN). Dsoumouna, 19-10-71, Recollem J. P. G. Rilloi (MNHN). acq. Donckier de Donceel, 1923, Cameroun, M. Pic vidit 1940 (RMNH).

**Diagnosis:** *Erymanthus testaceus* can be confused with *E. transversopustulatus* n. sp. and *E. gemmatus*. In *Erymanthus gemmatus* the gibbosities A, C and D has black setae. *Erymanthus transversopustulatus* n. sp. is 18–20mm long and has black setae on all gibbosities. *Erymanthus testaceus* is recognizable by its yellow to light brown pronotum without any maculation and the white setae on gibbosities C and D.

**Length:** (8 specimens measured) 11–13mm (average 12.38mm).

**Head:** Yellow to light brown; frontal umbo with indistinct grooves; with dense fine punctation; with flavous anteriorly directed pilosity and testaceous pilosity laterally; antennae yellowish-brown.

**Pronotum:** Pronotal length to width ratio 1.06:1 to 1.12:1 (average 1.09:1); yellow to light brown; gibbosities inconspicuous, pronotal groove clearly visible; scattered with fine punctation and testaceous pilosity.

**Scutellum:** Black; vested with white setae.

**Elytra:** Elytral length to width ratio 1.86:1 to 1.96:1 (average 1.89:1); yellow to light brown, sometimes with 2–4 black spots; dense punctation in distinct rows, interstices width half to double diameter of punctation; basal 3–4 rows of punctation rasp-like, some punctation merges longitudinally; scattered with flavous pilosity; many gibbosities in apical half, gibbosities C and D sometimes with white setal tuft, gibbosities A and B with dense fine punctation, gibbosity E with black setal tuft.

**Legs:** Yellow to light brown, meso- and metafemora black basally, meso- and metatibiae black distally; with long flavous pilosity, especially on tibiae.

**Lower surface:** Black, prothorax pale; scattered with white pilosity.

**Male genitalia, pygidium, ventrite VI:** Tips of tegminal lobes blunt, tegminal lobes one seventh length of tegmen; tegminal struts broadened until three-tenths length and tapering lanceolate until four-fifths length, last fifth narrow; phallic tip blunt; posterior side of pygidium rounded; processes of ventrite VI pointed.

**Distribution:** Cameroon, Gabon, Congo.

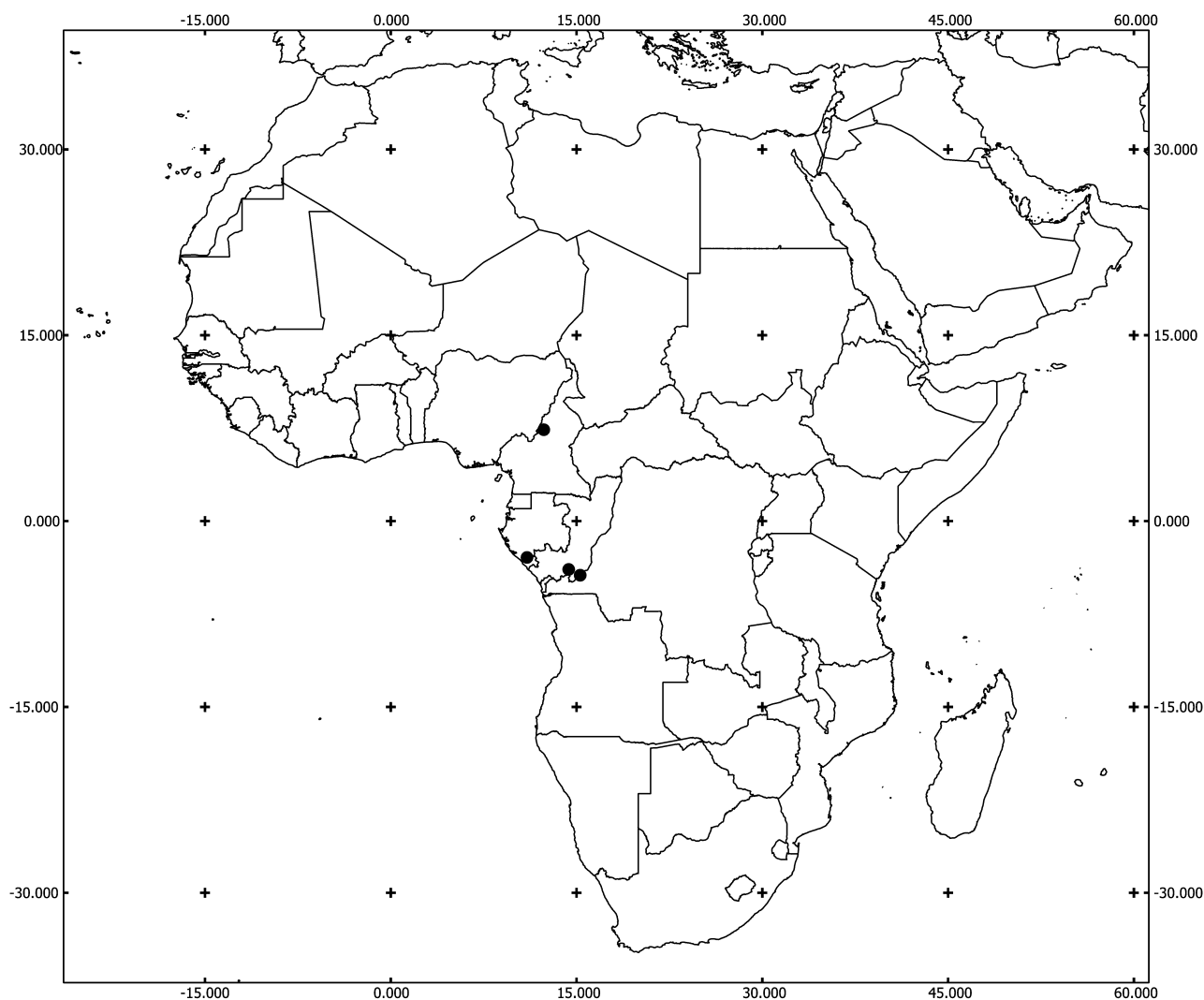
**Seasonal occurrence:** Collected in October.



**FIGURE 32.** *Erymanthus testaceus*: (A) Aedeagus ventral, (B) Phallus lateral, (C) Tegmen dorsal, (D) Spicular fork, (E) Pygidium, (F) Ventrte VI; (scale bars 1mm).

***Erymanthus transversopustulatus* Gerstmeier & Salvamoser 2013, n. sp.**  
(Figs 34, 41C)

**Specimens examined: Holotype:** Museum Leiden, Kenya: Tsavo NP (E), Voi: Mzinga, 1.–7.I.1973, J. Krikken, no 73, 3°21'S–38°37'E, ca. 700m, deciduous orthophyll savanna, at light, Dia 1979 (RMNH). **Paratypes:** Museum Leiden, Kenya: Tsavo NP (E), Voi: Mzinga, 1.–7.I.1973, J. Krikken, no 73, 3°21'S–38°37'E, ca. 700m, deciduous orthophyll savanna, at light, Dia 1979 (RMNH). Kenya: Rift Valley, Mathews range, ca. 35 km N Wamba, 1300–1400m, 1°10'707"N, 37°18'962"E, 07.–12.XII.2002, leg. C. Häuser, D. Bartsch & A. Zahm (SMNS).



**FIGURE 33.** Distribution of *Erymanthus testaceus*.

**Diagnosis:** *Erymanthus transversopustulatus* **n. sp.** can be mainly confused with *E. belzebuth*. In *Erymanthus transversopustulatus* **n. sp.** The gibbosities are really transverse and have a tuft of black setae, the lower surface is black, in *E. belzebuth* the metathorax is yellow to brown. In *Erymanthus transversopustulatus* **n. sp.** The hind tibiae are curved and black, in *E. belzebuth* the hind tibiae are almost straight and brown. The antennae in *E. belzebuth* are brown and bordered black, in *E. transversopustulatus* **n. sp.** The antennomeres are black from A6/A7 onwards.

**Length:** (3 specimens measured) 18–20mm (average 19mm).

**Head:** Light brown with characteristic black maculation, antennomeres from A6/A7 onwards totally black; frontal umbo with large rounded grooves; with dense fine punctation concentrated between the eyes; with flavous pilosity concentrated between the eyes.

**Pronotum:** Pronotal length to width ratio 0.96:1 to 0.98:1 (average 0.97:1); light brown with black maculation (Fig. 41C); gibbosities elevated, posterior gibbosities evenly conical, pronotal groove inconspicuous; with dense fine punctation; with quite dense flavous and black pilosity.

**Scutellum:** Black; vested with flavous setae.

**Elytra:** Elytral length to width ratio 1.96:1 to 2.04:1 (average 2.00:1); light brown with black maculation; punctation large, circular, not conspicuously rasp-like, width of interstices variable, irregularly distributed; with short, black pilosity; gibbosities oblong-ovate, all gibbosities with tuft of black setae.

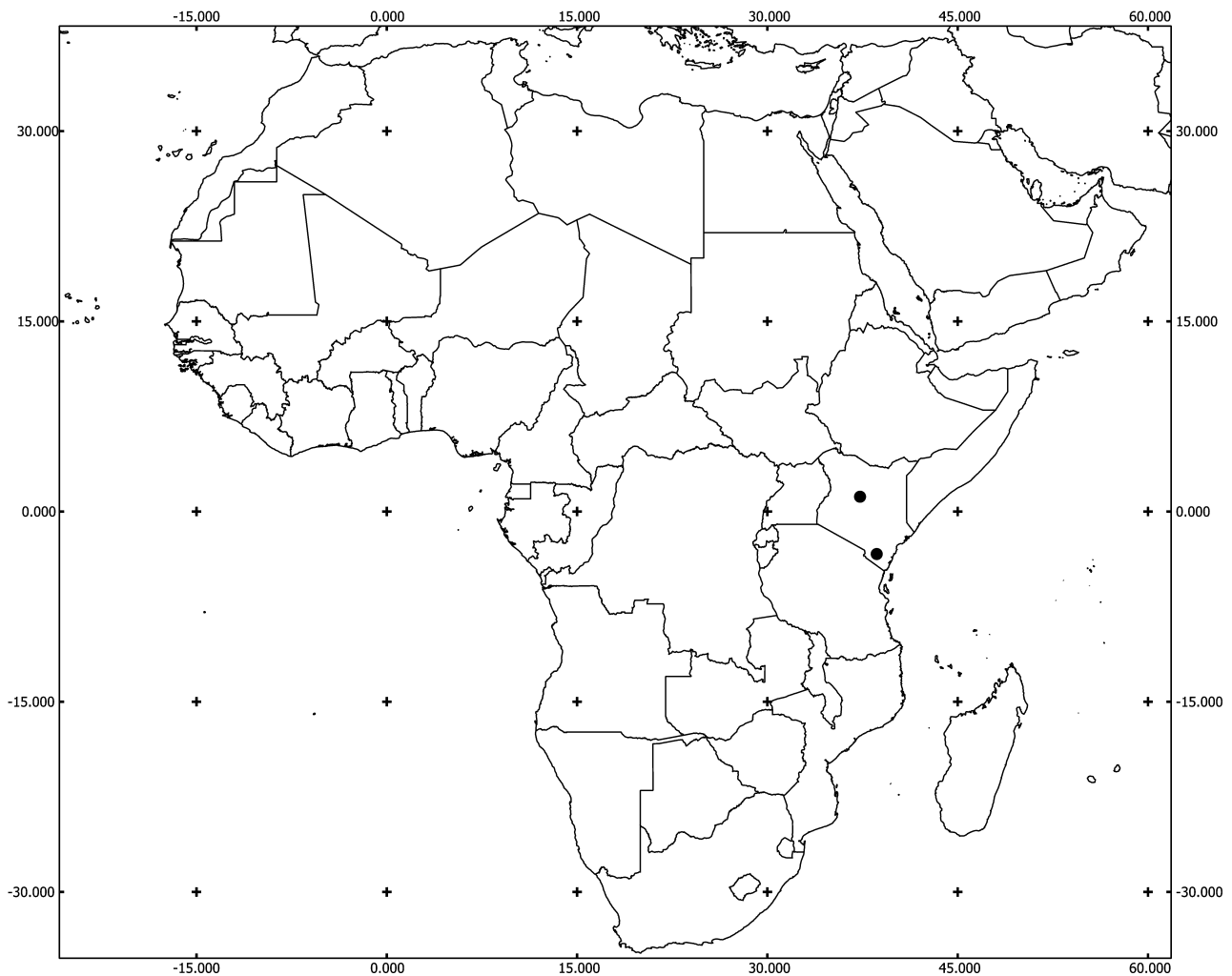
**Legs:** Black, femora with two light brown bands, procoxa light brown; hind tibiae curved.

**Lower surface:** Black, except prothorax; light spots laterally on each abdominal segment; with dense flavous and flavotestaceous pilosity.

**Male genitalia, pygidium, ventrite VI:** Not available, all specimens are females.

**Distribution:** Kenya.

**Seasonal occurrence:** Collected from December to January.



**FIGURE 34.** Distribution of *Erymanthus transversopustulatus* n. sp.

***Erymanthus variolatus* Brême, 1844**

(Figs 35–36, 41D)

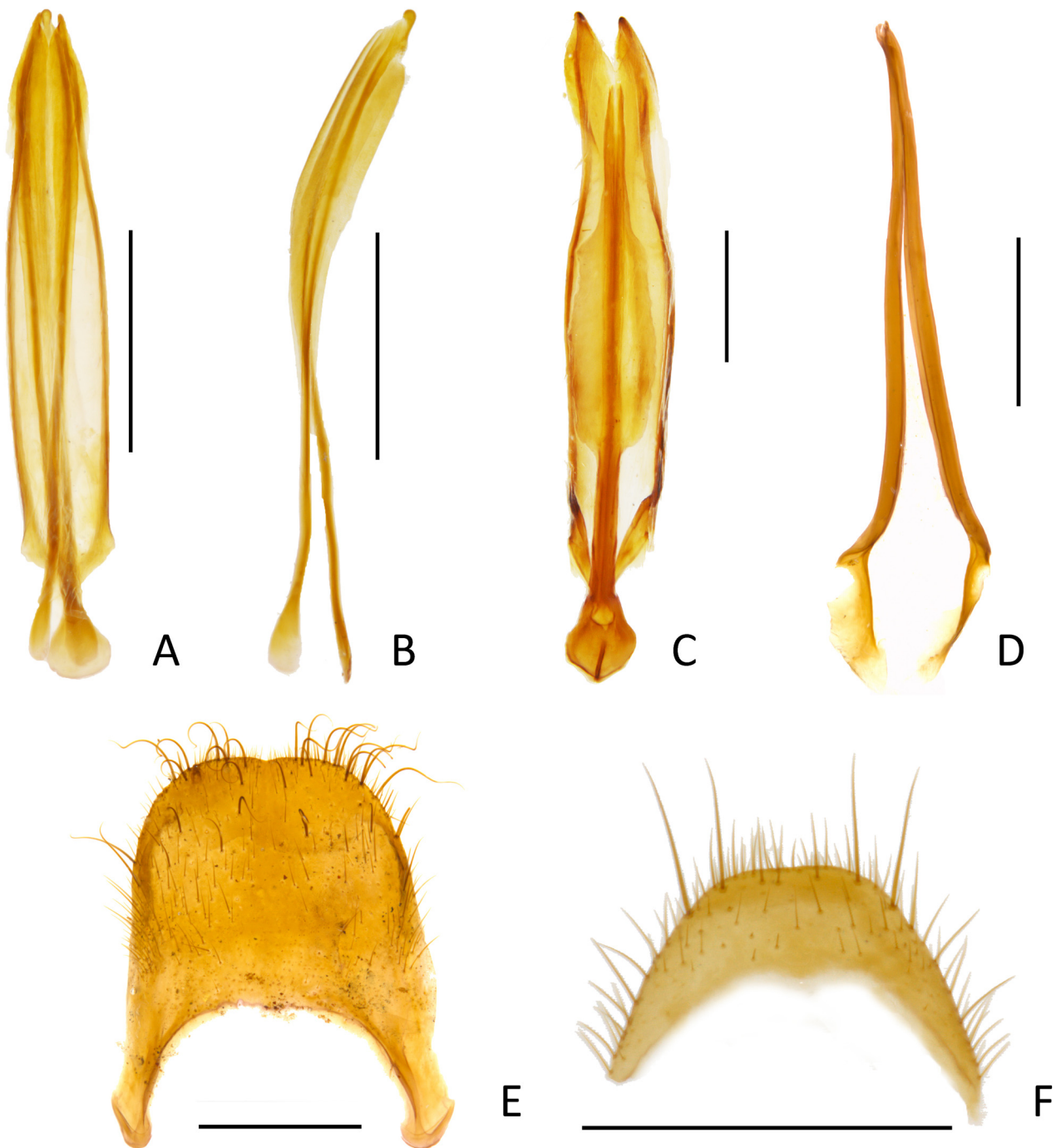
Brême 1844: 294, t7 f7; Desmarest in Chenu 1860: f 192.

**Specimens examined: Lectotype** (designated here): Senegal, Paralectotype, J. J. Menier det. 1981, Ex Musæo J. Thomson, Muséum Paris 1952, Coll. R. Oberthür (MNHN).

**Comment on type specimen:** Brême’s statement “Ma collection et celle de M. Reiche” implies more than one type specimen. The only available specimen from Senegal (MNHN) is therefore considered a syntype (ICZN 1999: Article 73.2) and available for lectotype designation (ICZN 1999: Article 74.1). Should additional syntypes be discovered, they may be designated as paralectotypes. Menier’s designation was never formalised through publication.

**Others:** Haut-Uelé, Moto, 1923, L. Burgeon, Musée du Congo (MRAC). Sankuru, Kondue, Coll. Ed. Luja, Musée du Congo (MRAC). Haut-Uelé, Moto, 12.1925, L. Burgeon, Musée du Congo (MRAC). Congo Belge, Kondue, Donateur Ed. Luja 1869, Luxbg. XII.1907, 1927 ex Naturh. Mus. Luxemburg, S. Schenkling det. (RMNH). Côte d’Ivoire, Mont Tonkoui, v. 600m, 26.X.84, J.-M. Leroux coll., piège lumineux (MNHN). Haut

Oubangui, Bessou (Mission), a Mont de Fort de Possei, Mission Chari-Tchad, D. J. Decorse 1904, P. Lesne vid. (MNHN). Congo, Kassai, Sankuru, e. Luja, det. Schenkling, Col - 03103 (SDEI). babun, wiber, Coll. Kraatz, Schenkling det., Col - 03105 (SDEI). S. Kamerun, Lolodorf, L. Conradt S., (ZMB). Tshuapa: Flandria, IX.1946/VIII. 1947, Rev. P. Hulstaert, Coll. Mus. Congo, Muséum Paris, Coll. M. Pic (MNHN). Nimba (Guinée), Lamotte, Amiet, Vanderplaetsen, XII.56–V.57, Zie'la U.V., 30.–31. mars 57 (MNHN). S. O. Kamerun, Lolodorf, 8.II.–27.III. 95, L. Conradt S. (ZMB). S. O. Kamerun, Lolodorf, 19.II.–7.XI.95, L. Conradt S. (ZMB). R.C.I. Comoe, x.1998, lgt. Ph. Morretti, Jakub Rolčík Collection Prague (JRCP). RCI.4.73, Yopongou, *Erymanthus flavonotatus* Pic, J. Rolčík det. 2004, Jakub Rolčík Collection Prague (JRCP). 23.3.86, Ghana, Ashanti-Reg., Umg. Kumasi, leg. Hiermeier, *Erymanthus* sp., Collection Vladimír Beneš (JRCP). Cameroon centr., V.1996 (RGCM). Kpalime, Togo, lg. Werner, 3.86 (RGCM).



**FIGURE 35.** *Erymanthus variolatus*: (A) Aedeagus ventral, (B) Phallus lateral, (C) Tegmen dorsal, (D) Spicular fork, (E) Pygidium, (F) Ventrите VI; (scale bars 1mm).

**Diagnosis:** *Erymanthus variolatus* can be confused with *E. belzebuth*, *E. semirufus*, *E. flavonotatus* and *E. maculaticeps*. In *E. flavonotatus* the metafemora are dark from base towards middle. In *E. maculaticeps* the abdomen is dark brown to black, the tegminal struts are lanceolate and the tips of tegminal lobes pointed. In *E. belzebuth* the abdomen is dark brown to black. *Erymanthus variolatus* can be recognized by its dark markings basally and around the middle of the femora and the pale two ultimate abdominal segments.

**Length:** (15 specimens measured) 10–20mm (average 14.87mm).

**Head:** Brown with sometimes dark markings; frontal umbo with two rounded grooves; with flavous anteriorly directed pilosity; antennae brown, bordered black, antennomeres A9–A11 darker.

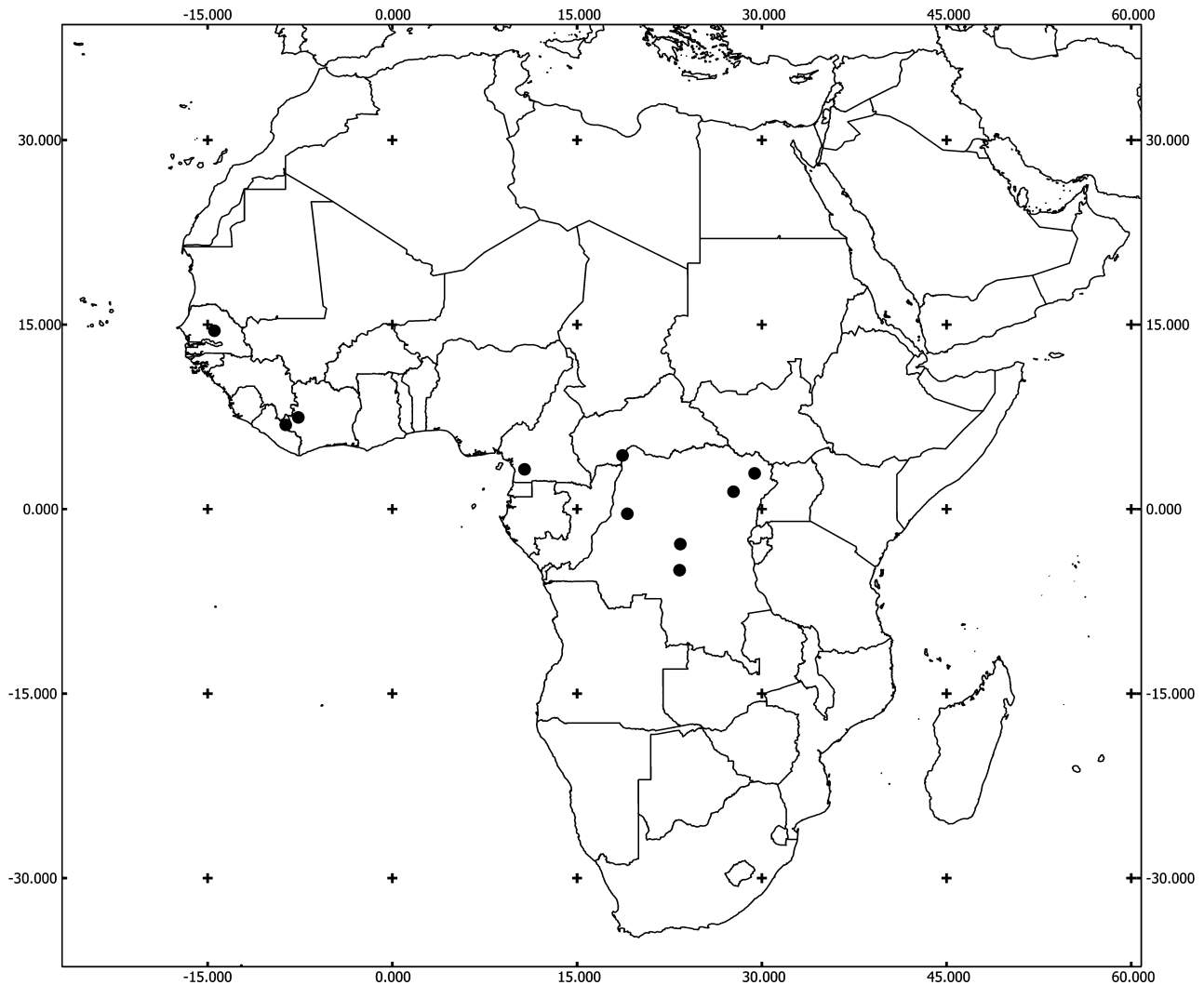
**Pronotum:** Pronotal length to width ratio 1.04:1 to 1.21:1 (average 1.11:1); brown with variable dark maculation, pronotal groove always dark; pronotal groove and gibbosities quite variable; with dense fine punctation; with dense flavous and dark pilosity.

**Scutellum:** Black; vested with white setae.

**Elytra:** Elytral length to width ratio 1.90:1 to 2.15:1 (average 2.06:1); light brown, two black spots on each side in the anterior half; circular punctation in the anterior half, always light brown (even in the dark spots); punctation not rasp-like; interstices half to twice as wide as diameter of punctation; very irregularly distributed; with isolated black and white pilosity; gibbosities A, B, C and D with white setal tuft, E with black setae.

**Legs:** Light brown, femora with dark markings around the middle and basally; tibiae dark, especially protibiae.

**Lower surface:** Dark brown to black, last two abdominal segments light brown, light spots laterally on each abdominal segment.



**FIGURE 36.** Distribution of *Erymanthus variolatus*.

**Male genitalia, pygidium, ventrite VI:** Tips of tegminal lobes blunt, tegminal lobes one-seventh length of tegmen; tegminal struts broadened after one-fourth of length and tapering after two-thirds, last one-fifth of struts narrow with furcate tip; phallic tip blunt; posterior side of pygidium rounded; processes of ventrite VI rather pointed.

**Distribution:** Senegal, Liberia, Ivory Coast, Cameroon, Togo, Central African Republic, DR Congo.

**Seasonal occurrence:** Collected from January to December.

### ***Erymanthus vesuvioides* Thomson, 1856**

(Figs 37–38, 41E)

Thomson 1856: 114, t5 f8; Murray 1867: 319; Schenkling 1903: t5 f9; Schenkling 1906: 282.

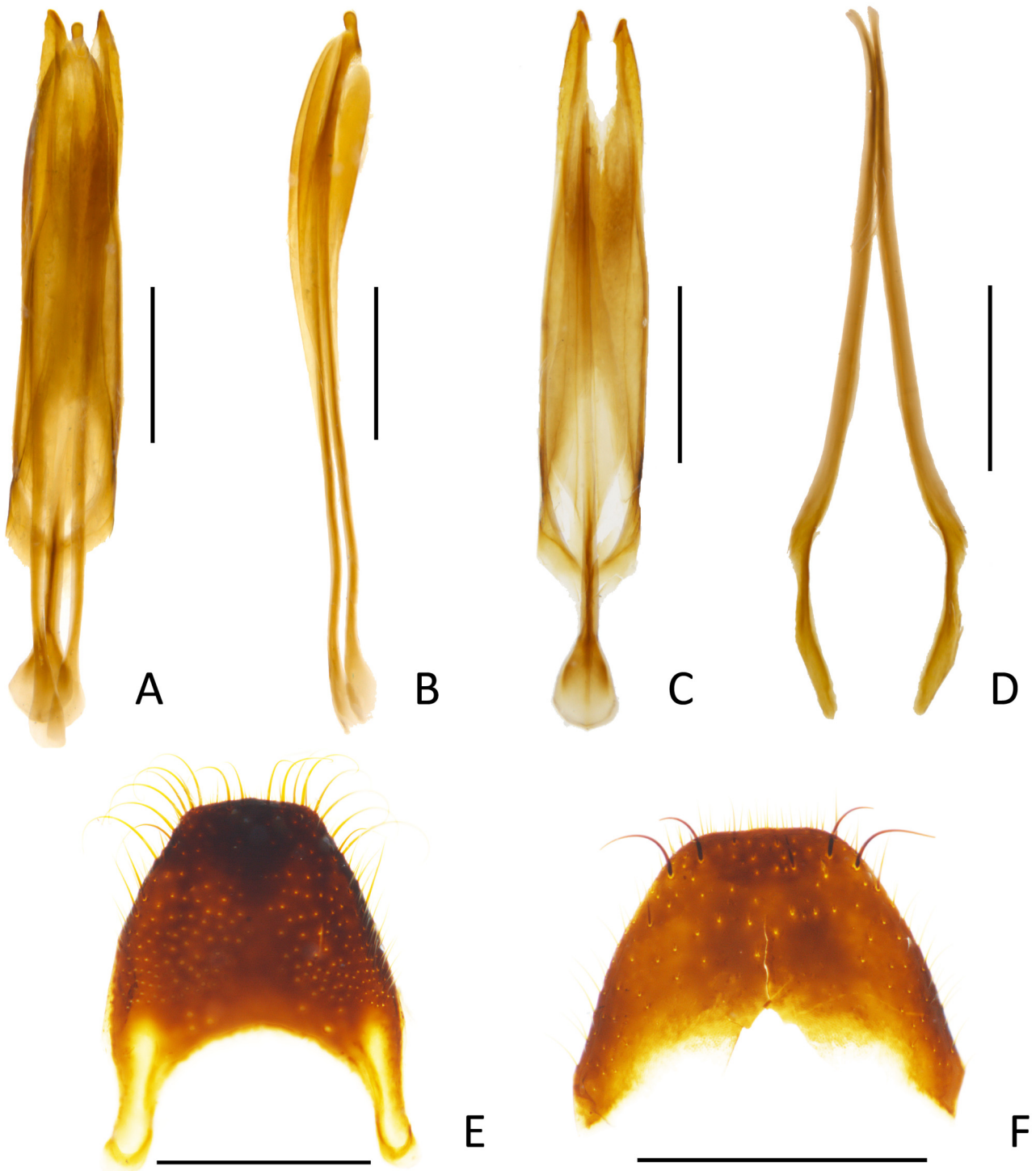
**Specimens examined: Lectotype** (designated here): Gd. Bassam, Type J. Thom., *Vesuvioides* Thoms. R. Z. 56.114.5.3., Ex Musæo James Thomson, Muséum Paris 1952, Coll. R. Oberthür, (MNHN).

**Comment on the type specimens:** As Thomson (1856: 114, 115) does not mention number of specimens, it cannot be assumed that *E. vesuvioides* is based on a single specimen. The specimen from Grand Bassam is therefore considered a syntype (ICZN 1999: Article 73.2) and available for Lectotype designation (ICZN 1999: Article 74.1).

**Others:** Guinea, Type Thom., *Vesuvioides* Thoms. R. Z. 56.114.5.3., Var A., Ex Musæo James Thomson, Muséum Paris 1952, Coll. R. Oberthür, (MNHN). Grand-Bassam, Aquentin, Bassam, Ex Musæo Parry, Muséum Paris 1952, Coll. R. Oberthür (MNHN). Gabon, Muséum Paris, Collection Leon Fairmaire 1902 (MNHN). Rivière Haut San Benito, Coll. Sedillot (RGCM). Congo Franç., Benito, Muséum Paris, Coll. M. Pic (MNHN). Gabon, Bas-Ogooué, Ex-Collection Favarel, Muséum Paris, E. Le Moul. 1923 (MNHN). Côte d'Ivoire, Rég. De San Pedro, G. Thoire 1901, Schenkling vid. 1901 (MNHN). Gabon, Bas-Ogooué, Ex-Collection Favarel, Muséum Paris, Coll. M. Pic (MNHN). Côte occid. Afrique, Ch. Alluaud 1886, Muséum Paris 1952, Coll. R. Oberthür (RGCM). Congo Français, N' Djole, J. Arrighi, Muséum Paris 1952, Coll. R. Oberthür (MNHN). Gabon, Bas-Ogooué, Ex-Collection Favarel, Muséum Paris, E. Le Moul. 1923 (MNHN). Gabon, W. Africa, Mocquerys (MNHN). Côte d'Ivoire, Env. De Dimbokro, Capitaine Posth 1910 (MNHN). Gabon, W. Africa, Mocquerys (MNHN). La Maboke, Rep. Centrafic., PL. 26.II.1973, Michel Boulard et Paul Kombo, Photographié, Museum Paris (MNHN). Gabon, Compare au type, ex Mus. R. Oberthür (RMNH). Gabon, Bas-Ogooué, Ex-Collection Favarel, Muséum Paris, 1923 acq. Le Moul, J. B. Corporaal det. 1923 (RMNH). Gabon, Bas-Ogooué, Ex-Collection Favarel, Muséum Paris, 1923 acq. Le Moul, J. B. Corporaal det. 1923 (RMNH). Gabon, Bas-Ogooué, Ex-Collection Favarel, Muséum Paris, 1923 acq. Le Moul, J. B. Corporaal det. 1934 (RGCM). Sierra Leone, Falaba (2), 24.VIII.1912, Jas. J. Simpson, Sierra Leone, J. J. Simpson, 1912–425, 1926 ex British Museum, J. B. Corporaal det. 1946 (RMNH). Gabon, Bas-Ogooué, Ex-Collection Favarel, Muséum Paris, 1923 acq. Le Moul, J. B. Corporaal det. 1923 (RMNH). Gabon, Bas-Ogooué, Ex-Collection Favarel, Muséum Paris, 1923 acq. Le Moul, J. B. Corporaal det. 1923 (RMNH). Gabon, Bas-Ogooué, Ex-Collection Favarel, Coll. R I. Sc. N. B., J. B. Corporaal det. 1936 (ISNB). Congo Franç., Benito, Coll. S. Schenkling, Schenkling det., *Erymanthus vesuvioides* West., Coll - 03102 (SDEI). Span. Guinea, Nkolentangan, XI.07–V.08, G. Teßmann S. G., *Erymanthus vesuvioides* Thoms., Museum f. Naturkunde Berlin (ZMB). Guinea, Buquet, *Erymanthus vesuvioides* Thoms., Hist. Coll. (Coleoptera) Nr. 17813, Zool. Mus. Berlin (ZMB). S. O. Kamerun, Lolodorf, 8.II.–27.III. 95, L. Conradt S., *Erymanthus vesuvioides* Thoms., Determ. E. Hintz (ZMB). Span. Guinea, Nkolentangan, XI.07–V.08, G. Teßmann S. G., *Erymanthus vesuvioides* Thoms., Museum f. Naturkunde Berlin (ZMB). Gabon, Libreville et env., Don M Babault Fév. 1922, *Erymanthus vesuvioides* Ths., R. Det. E 2225 (MRAC). Gabon, Bas-Ogooué, Ex-Collection Favarel, Sammlung P. Lepesme Eing. Nr. 2, 1949, *Erymanthus vesuvioides* Thoms., P. Lepesme det. (ZMUH). S. Leone 67-71, Sierra Leone 67-71, *Erymanthus vesuvioides* Thoms., J. B. Corporaal det. 1926, *Erymanthus vesuvioides* Thoms., J. J. Menier det. 1981 (BMNH).

**Diagnosis:** *Erymanthus vesuvioides* can be confused with *E. melanurus*. *Erymanthus melanurus* is 9–12mm long and has light brown femora. *Erymanthus vesuvioides* is clearly recognizable by its black metafemora and the total length of 12–20mm.

**Length:** (31 specimens measured) 12–20mm (average 15.77mm).



**FIGURE 37.** *Erymanthus vesuvioides*: (A) Aedeagus ventral, (B) Phallus lateral, (C) Tegmen dorsal, (D) Spicular fork, (E) Pygidium, (F) Ventricle VI; (scale bars 1mm).

**Head:** Light brown, on disc darker; frontal umbo with two rounded grooves; with flavous anteriorly directed pilosity; antennae brown.

**Pronotum:** Pronotal length to width ratio 1.06:1 to 1.18:1 (average 1.11:1); light brown, posteriorly darker; pronotal groove dark and quite deep; gibbosities inconspicuous; with dense fine punctation; with relatively dense anterior directed flavous pilosity.

**Scutellum:** Black; vested with white setae.

**Elytra:** Elytral length to width ratio 1.82:1 to 2.18:1 (average 1.98:1); anterior half light brown, posteriorly dark brown to black; conspicuously dilated apically; punctuation basally circular, apically elongate-ovate, first 2–4 rows slightly rasp-like, width of interstices variable, irregularly distributed; anteriorly with isolated black and flavous pilosity, posteriorly partly with dense white and flavous pilosity; gibbosities A, B, C and D with dense white setal tuft, E with black setae.

**Legs:** Pro- and middle legs light brown with dark marking dorsally on the femora, hind legs dark brown to black.

**Lower surface:** Dark brown to black with indication of light spots lateral of each abdominal segment; with white pilosity.

**Male genitalia, pygidium, ventrite VI:** Tips of tegminal lobes blunt, tegminal lobes one-fifth length of tegmen; tegminal struts broadened until one-fourth length and tapering lanceolate until tip; phallic tip clavate; posterior side of pygidium angular and very slightly pointed; processes of ventrite VI pointed.

**Distribution:** Guinea, Sierra Leone, Ivory Coast, Cameroon, Central African Republic, Equatorial Guinea, Gabon.

**Seasonal occurrence:** Collected from November to August.

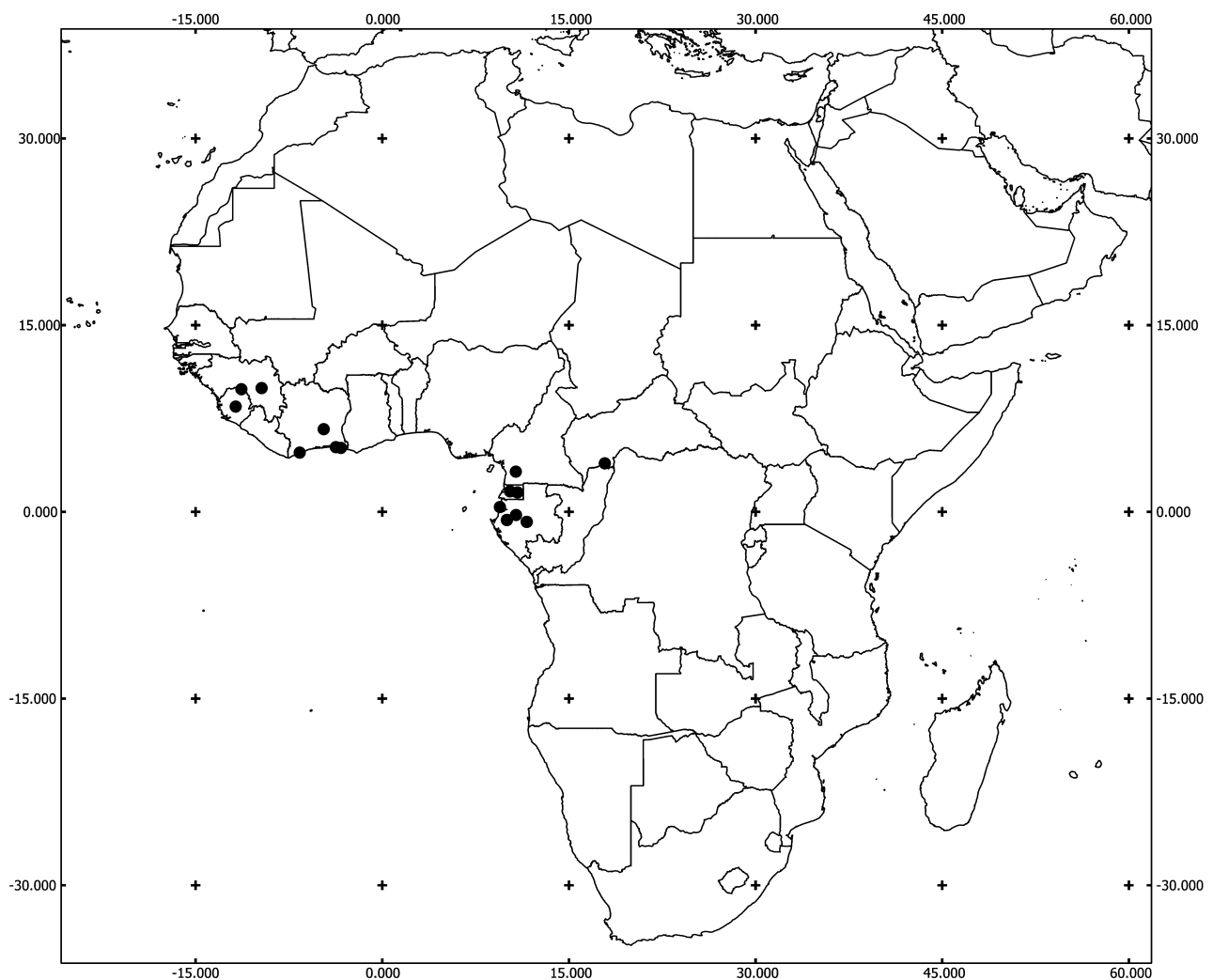
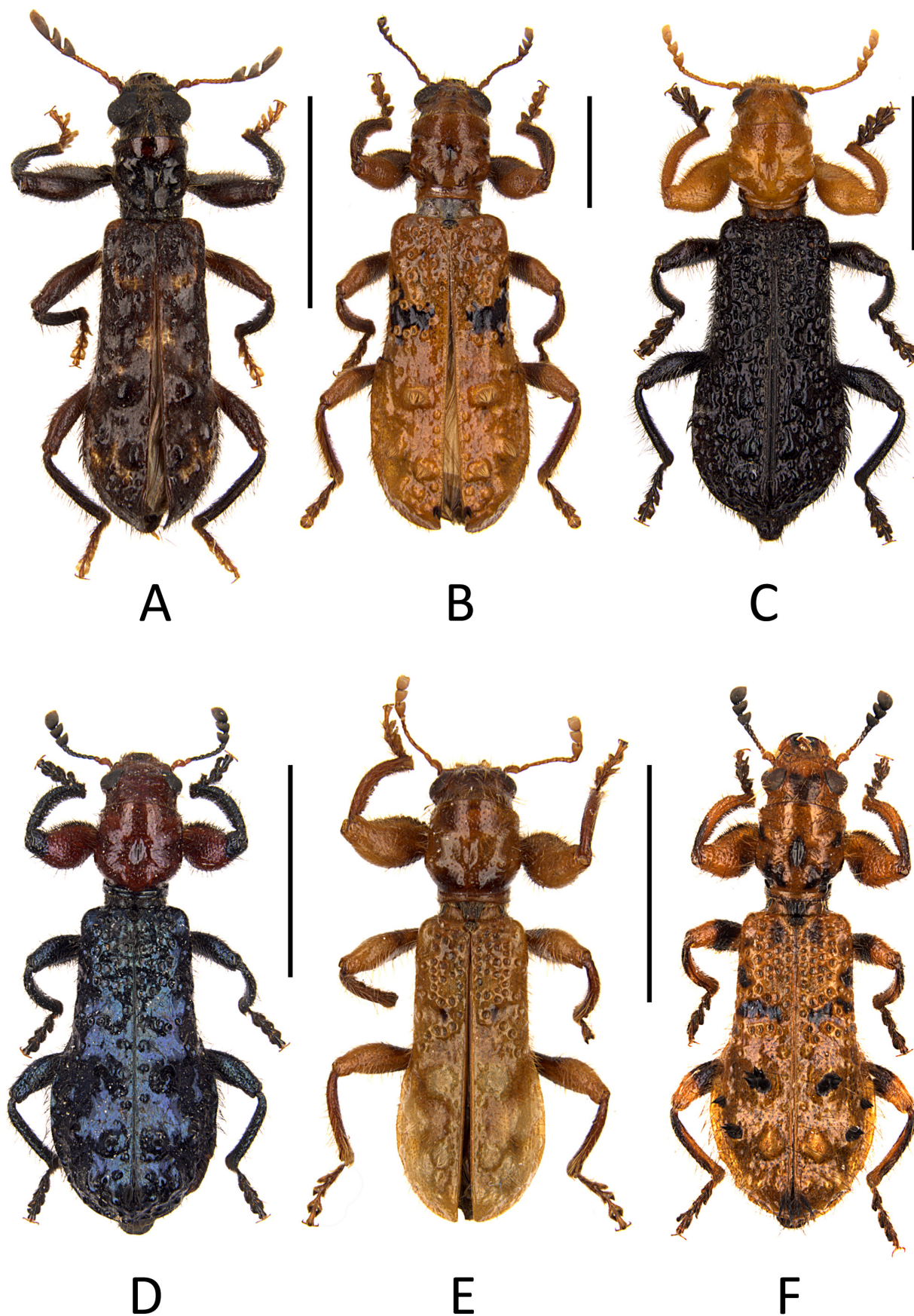
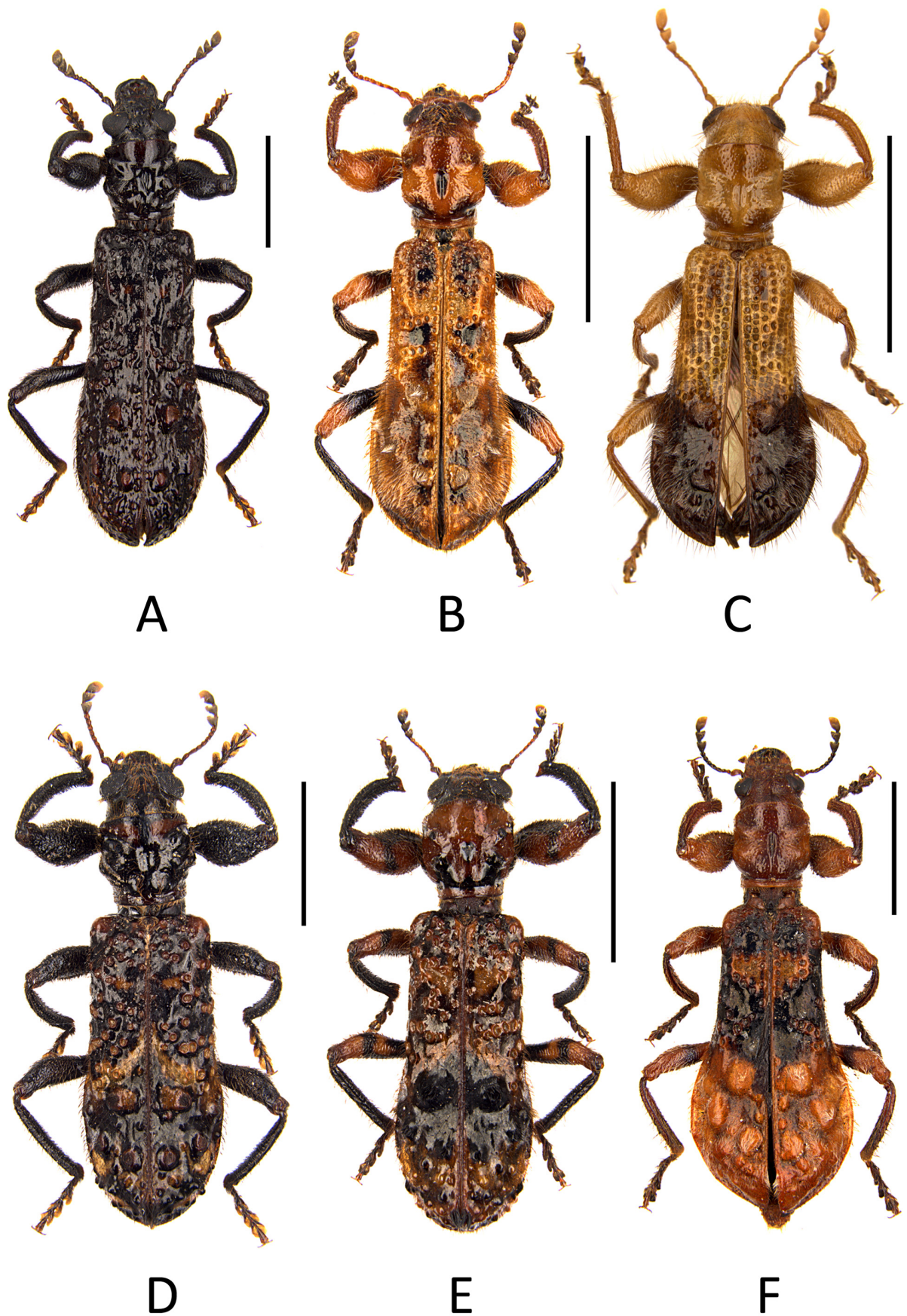


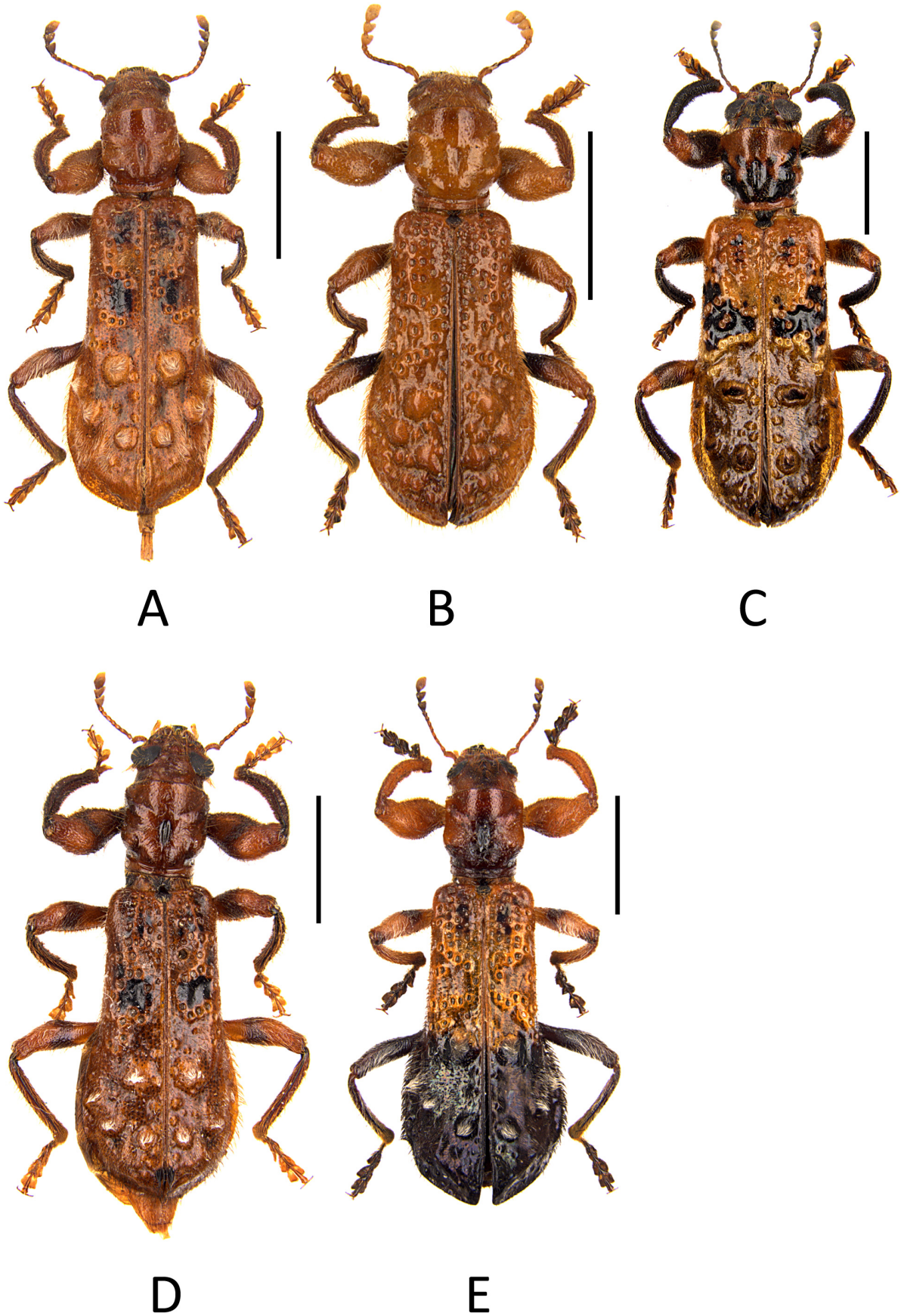
FIGURE 38. Distribution of *Erymanthus vesuvioides*.



**FIGURE 39.** (A) *Erymanthus ater*, (B) *Erymanthus belzebuth*, (C) *Erymanthus bicolor*, (D) *Erymanthus diversipes*, (E) *Erymanthus flavonotatus*, Lectotype, (F) *Erymanthus gemmatus*; (scale bars 5mm).



**FIGURE 40.** (A) *Erymanthus horridus*, (B) *Erymanthus maculaticeps*, (C) *Erymanthus melanurus*, (D) *Erymanthus pustulosus*, (E) *Erymanthus revoili*, (F) *Erymanthus semirufus*; (scale bars 5mm).



**FIGURE 41.** (A) *Erymanthus semirufus* ab., (B) *Erymanthus testaceus*, (C) *Erymanthus transversopustulatus* n. sp., (D) *Erymanthus variolatus*, (E) *Erymanthus vesuvioides*; (scale bars 5mm).

## References

- Brême di, F.A.G. (1844) Insectes coléoptères nouveaux ou peu connus, *Annales de la Société Entomologique de France*, 2, 295–296.
- Chapin, E.A. (1924) Cleridae collected by the American Museum Congo Expedition, 1909-1915, *American Museum Novitates*, 151, 1–4.
- Corporaal, J.B. (1949) Fifth series of notes on systematics and synonymy (32nd communication on Cleridae), *Entomologische Berichten*, 12 (288), 355–357.
- Corporaal, J.B. (1950) *Cleridae. Coleopterorum Catalogus*, Supplementa pars 23, Uitgeverij Dr. W. Junk, 's-Gravenhage, 1–373.
- Desmarest, E. (1860) Cleriens. In: Chenu, J.C. (Ed.), *Encyclopedie d'Histoire Naturelle. Coleopteres, Encyclopedie d'Histoire Naturelle Coléoptères*, 2, 226–279.
- Ekis, G. (1975) Taxonomic and nomenclatural status of clerid taxa described by Massimiliano Spinola (1780-1857) (Coleoptera, Cleridae), *Bolletín del Museo Zoología dell' Università di Torino* 1, 1–80.
- Fairmaire, M.L. (1887) Coléoptères Des Voyages De M. G. Revoil chez les Somâlis et dans l'intérieur du Zanguebar, *Annales Société Entomologique de France*, (6), 7, 69–186.
- Gorham, H.S. (1883) Descriptions of Malacodermata in the Civic Museum of Natural History at Genua, *Annali del Museo Civico di Storia Naturale di Genova* 18, 591–606.
- Hintz, E. (1902) Beitrag zur Kenntnis der paläarktischen Cleriden, *Deutsche entomologische Zeitschrift*, 1902 (1), 227–230.
- Hintz, E. (1905) Neue Cleriden aus Westafrika, *Deutsche Entomologische Zeitschrift*, 1905, 305–314.
- Imhoff, L. (1856) *Versuch einer Einführung in das Studium der Koleopteren*, Basel 1856, 60–62.
- International Commission for Zoological Nomenclature (ICZN) (1999) *International Code of Zoological Nomenclature*. Fourth Edition. International Trust for Zoological Nomenclature, London, xxix + 306 pp.  
<http://dx.doi.org/10.5962/bhl.title.50608>
- Klug, J.C.F. (1842) Versuch einer systematischen Bestimmung und Auseinandersetzung der Gattungen und Arten der Clerii, einer Insectenfamilie aus der Ordnung der Coleopteren, *Abhandlungen der Berliner Akademie der Wissenschaften*, 259–397.
- Kolbe, H.J. (1897) *Die Käfer Deutsch-Ost-Afrikas*, Verlag Dietrich Reimer, Berlin, 367 pp.
- Kuwert, A. (1893) Neue und alte africanische Cleriden, *Annales de la Société Entomologique de Belgique*, 37, 467–479.
- Lacordaire, Z. (1857) *Histoire Naturelle des Insectes. Genera des Coleopteres IV. Fam. 41, Clerides*, 579 pp.
- Murray, A. (1867) List of Coleoptera received from Old Calabar, on the West Coast of Africa, *The Annals and Magazine of Natural History*, 20, third series, 314–323.
- Opitz, W. (2010) Classification, natural history, phylogeny, and subfamily composition of the Cleridae and generic content of the subfamilies. *Entomologica Basiliensia et Collections Frey*, 32, 31–128.
- Pic, M. (1932) Diagnoses préliminaires, *Mélanges exotico-entomologiques*, 59, 1–36.
- Pic, M. (1933) Clérides du Congo, *Revue de Zoologie et de Botanique Africaines*, 23 (2), 108–129.
- Pic, M. (1937) Coléoptères d'Angola, *Revue Suisse Zoologie*, 44, 5–109.
- Pic, M. (1949) Nouveaux coléoptères de l'Ouest Africain, *Bulletin de l'Institut français d'Afrique noire*, 11, (3–4), 307–312.
- Pic, M. (1950) Nouveaux Clérides, originaires surtout du Congo belge (Col.), *Revue de Zoologie et de Botanique Africaines*, 43, (1–2), 152–163.
- Quedenfeldt, G. (1888) Beiträge zur Kenntniss der Koleopteren-Fauna von Centralafrika nach den Ergebnissen der Lieutenant Wissmann'schen Kassai-Expedition 1883 bis 1886, *Berliner Entomologische Zeitschrift*, 32, 155–219.
- Schenkling, S. (1903) *Coleoptera. Malacodermata. Fam. Cleridae*. In: Wytsman, P. (Ed.), *Genera Insectorum*, Fasc. 13, P. Wytsman, Bruxelles, 124 pp.
- Schenkling, S. (1906) Die Cleriden des Deutschen Entomologischen National-Museums, nebst Beschreibungen neuer Arten, *Deutsche Entomologische Zeitschrift*, 1906, 241–320.
- Spinola, M. (1841) Monographie des Térédiles, *Revue Zoologique, par la Société Cuvierienne*, 4, 70–76.
- Spinola, M. (1844) *Essai monographique sur les Clérites Insectes Coléoptères*. Imprimerie des frères Ponthenier, Genes, Tomes I and 2, I (I–IX, 1–386); II (1–119); Suppl. (121–216); 47 pls.
- Thomson, J. (1856) Description de dix coléoptères, *Revue et Magasin de Zoologie*, (2), 8, 12–118.
- Westwood, J.O. (1852) Descriptions of new species of Cleridae, from Asia, Africa and Australia, *Proceedings of the Zoological Society of London*, 20, 34–55.