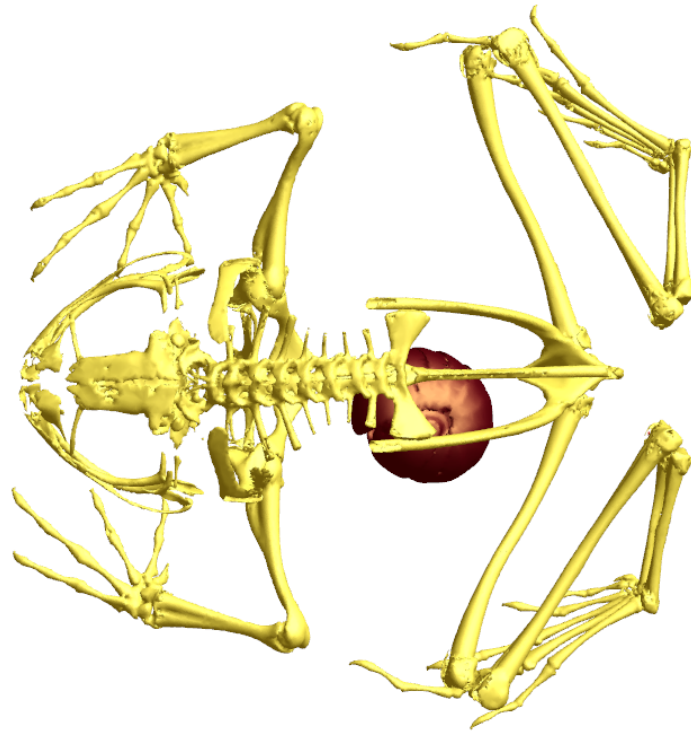
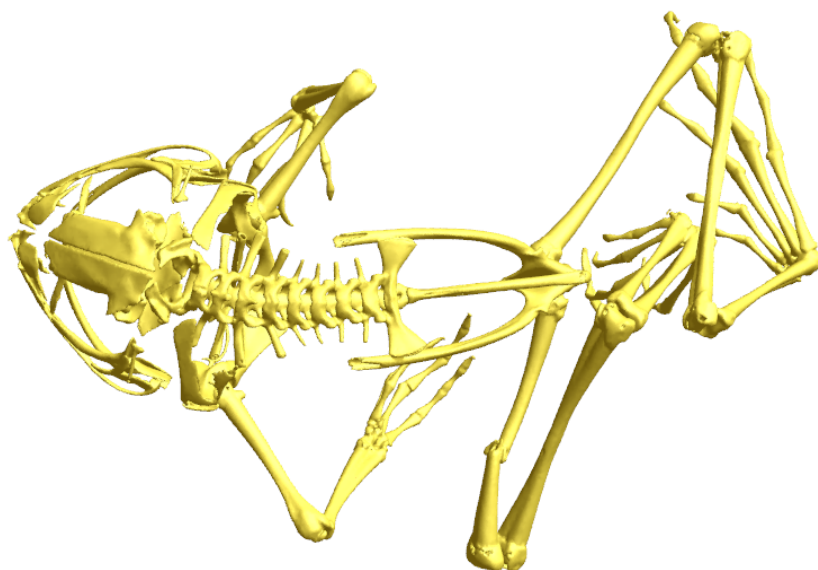


**Supplementary FIGURE 1.** Interactive PDF-3D models of the skeleton and x-ray absorbing stomach contents of the CT scanned specimens. Click images in Adobe Acrobat/Reader (version IX or later) to enable the 3D contents. The models are calibrated with 1 unit equalling 1 mm. Individual measurements can be taken with the *3D Measurement Tool* (available in Adobe Reader XI). A number of prefabricated *views* (transparency, background, viewing angle etc.) are available from the *3D Tools* bar.



ZSM 357/2005 *Rhombophryne vaventy* **sp. nov.** Holotype. Millipede contained in stomach.



MNHN 1975.24 *Rhombophryne serratopalpebrosa*. Holotype.