



<http://dx.doi.org/10.11646/zootaxa.3734.4.7>

<http://zoobank.org/urn:lsid:zoobank.org/pub:F6EA925D-12AD-44AE-AEDF-1FFB6B33B9F8>

## A new species of the genus *Interphasma* Chen & He, 2008 (Phasmida: Clitumninae: Medaurini) from Sichuan, China

GEORGE WAICHUN HO<sup>1</sup> & FUMING SHI<sup>2</sup>

<sup>1</sup>Hong Kong Entomological Society. Address: P. O. Box No.73749, Kowloon Central Post Office, Hong Kong, P. R. China.  
E-mail: georgehwc@hotmail.com.

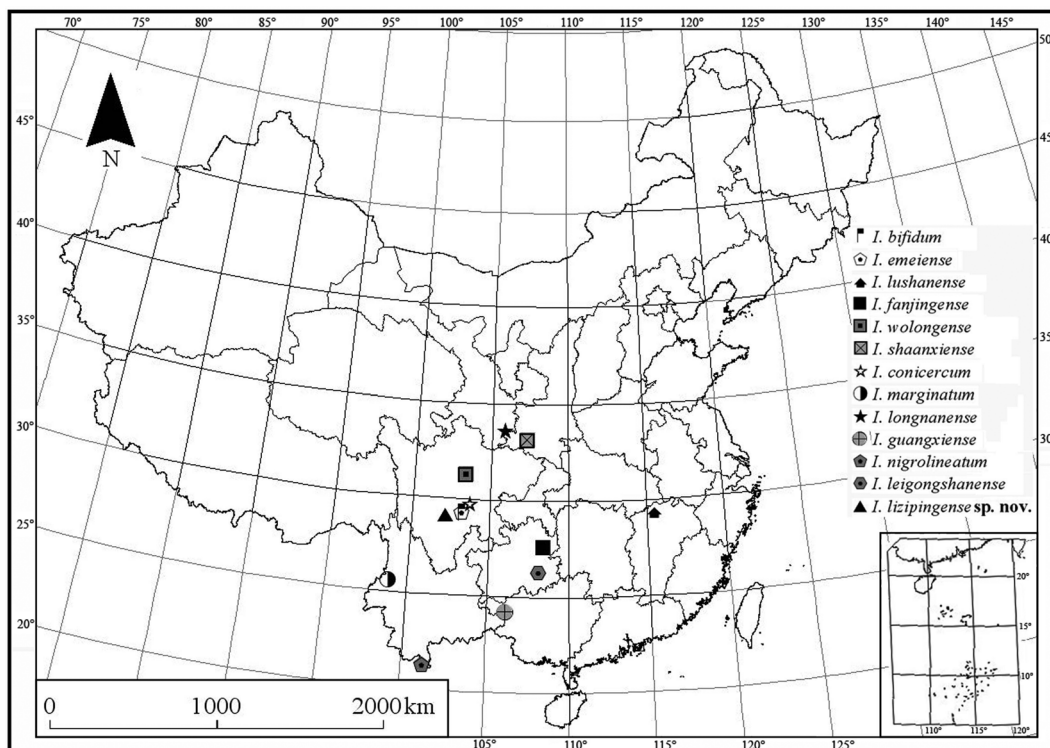
<sup>2</sup>College of Life Sciences, Hebei University, Baoding 071002, P. R. China. E-mail: shif\_m@126.com

Chen and He erected the genus *Interphasma* in 2008 (Chen & He, 2008). Thirteen species are recognized in this Chinese endemic genus which is distributed in eastern to south-western China (Chen & He, 2008; Chen & Zhang, 2008; Xu *et al.*, 2010). In this paper, a new species, *I. lizipingense* sp. nov., is described and illustrated from Sichuan, China. A key to the species of the genus is given. The types are deposited in the Museum of Hebei University (HBU) and Hong Kong Entomological Society (HKEM). Full measurements are given to all the types in millimeter (mm.).

### Genus *Interphasma* Chen & He, 2008

**Type-species.** *Interphasma lushanense*, Chen & He, 2008: 329, by original designation.

**Description.** Medium-sized. Apterous. Body slender in male and robust in female; rough, with sparse and small granulation which may be absent in the male of some species. Head oblong; occiput flat. Antennae distinctly segmented, shorter than profemora. Thorax slender. Abdomen cylindrical. Seventh sternum with distinct preopercular organ in most species in female. Anal segment tectiform in female; distinctly dilated into two semi-terga in male. Supra-anal plate small or indistinct in female. Cerci short and cylindrical. Legs unarmed. Profemora curved basally.



MAP 1. Distribution of the genus *Interphasma* (excluding *I. xinjiangense* Chen & He, 2008)

**Table 1.** Measurements of *Interphasma lizipingense* Ho & Shi **sp. nov.**

Lengths (mm.)	Male (Holotype)	Male (Paratypes)	Female (Paratypes)
Body	47.5	44.0–53.0	46.0–55.0
Head	2.4	2.2–2.5	3.0–3.5
Antennae	12.5	11.0–13.5	7.0–9.0
Pronotum	2.2	2.2–2.5	2.5–3.0
Mesonotum	9.0	9.0–10.5	10.0–13.0
Metanotum	5.5	5.0–6.0	5.0–6.0
Median segment	1.5	1.3–1.5	1.5–2.0
Profemora	20.0	20.0–22.5	16.5–21.0
Mesofemora	13.0	12.0–15.0	11.0–14.0
Metafemora	17.0	15.0–18.0	14.0–17.0
Protibiae	23.5	22.0–26.5	20.0–23.0
Mesotibiae	14.0	13.5–17.0	13.0–17.0
Metatibiae	19.0	18.0–23.0	16.0–19.0

### Acknowledgments

We wish to thank Mr Bian Xun for producing the map of distribution of the genus.

### References

- Chen, S.C. & He, Y.H. (2008) *Phasmatodea of China*. China Forestry Publishing House, Beijing, 476 pp.
- Chen, S.C. & Zhang, P.Y. (2008) Five new species of stick insect from Yunnan Province and description of male *Cnipsomorpha colorantis* (Chen & He) (Phasmatodea: Heteronemiidae, Phasmatidae). *Entomotaxonomia*, 30 (4), 245–254.
- Xu, F.L., Yang, M.F. & Guo, G.H. (2010) A new species of the genus *Interphasma* from China (Phasmatodea, Phasmatidae). *Acta Zootaxonomica Sinica*, 35 (2), 395–397.