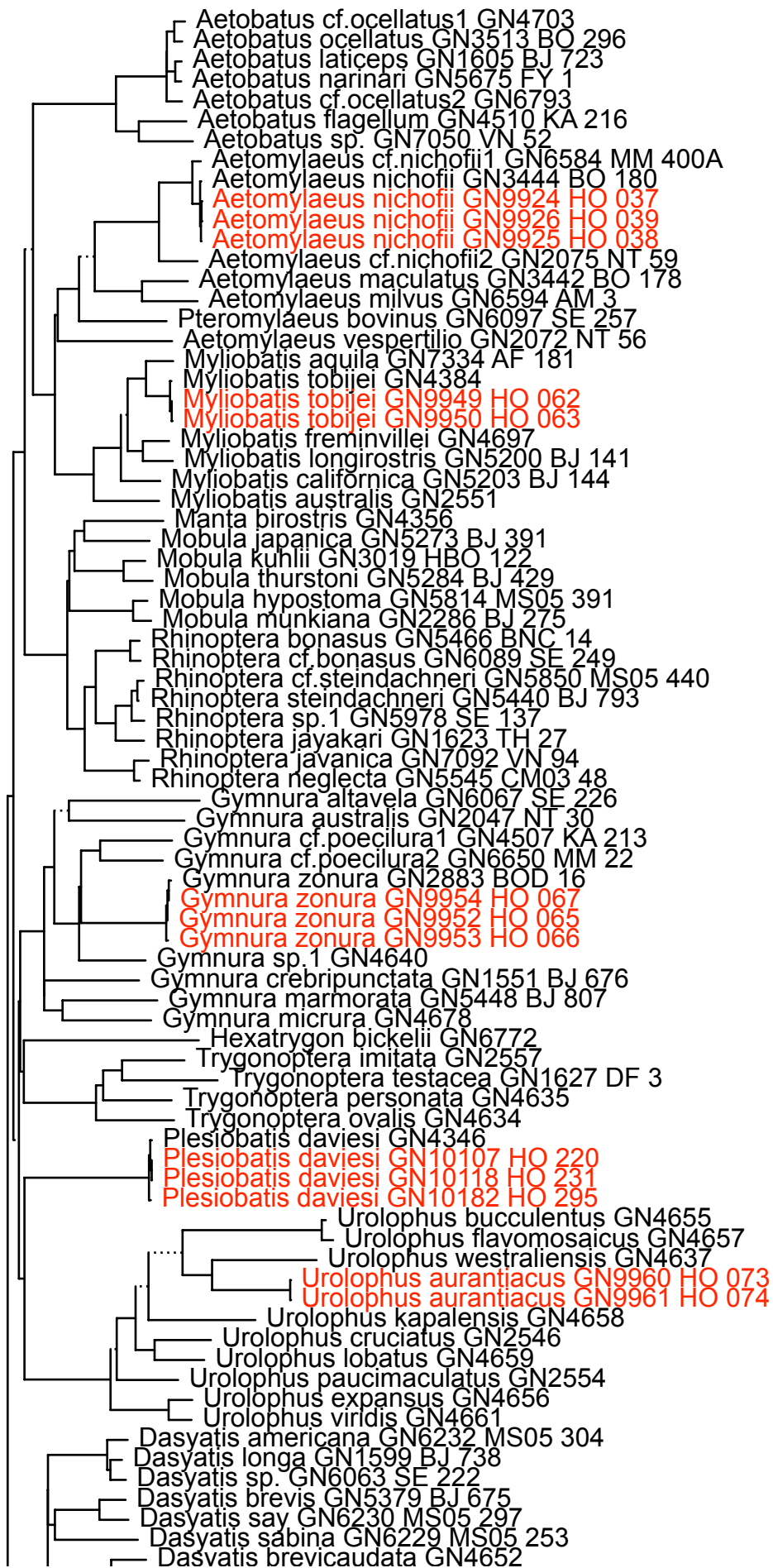
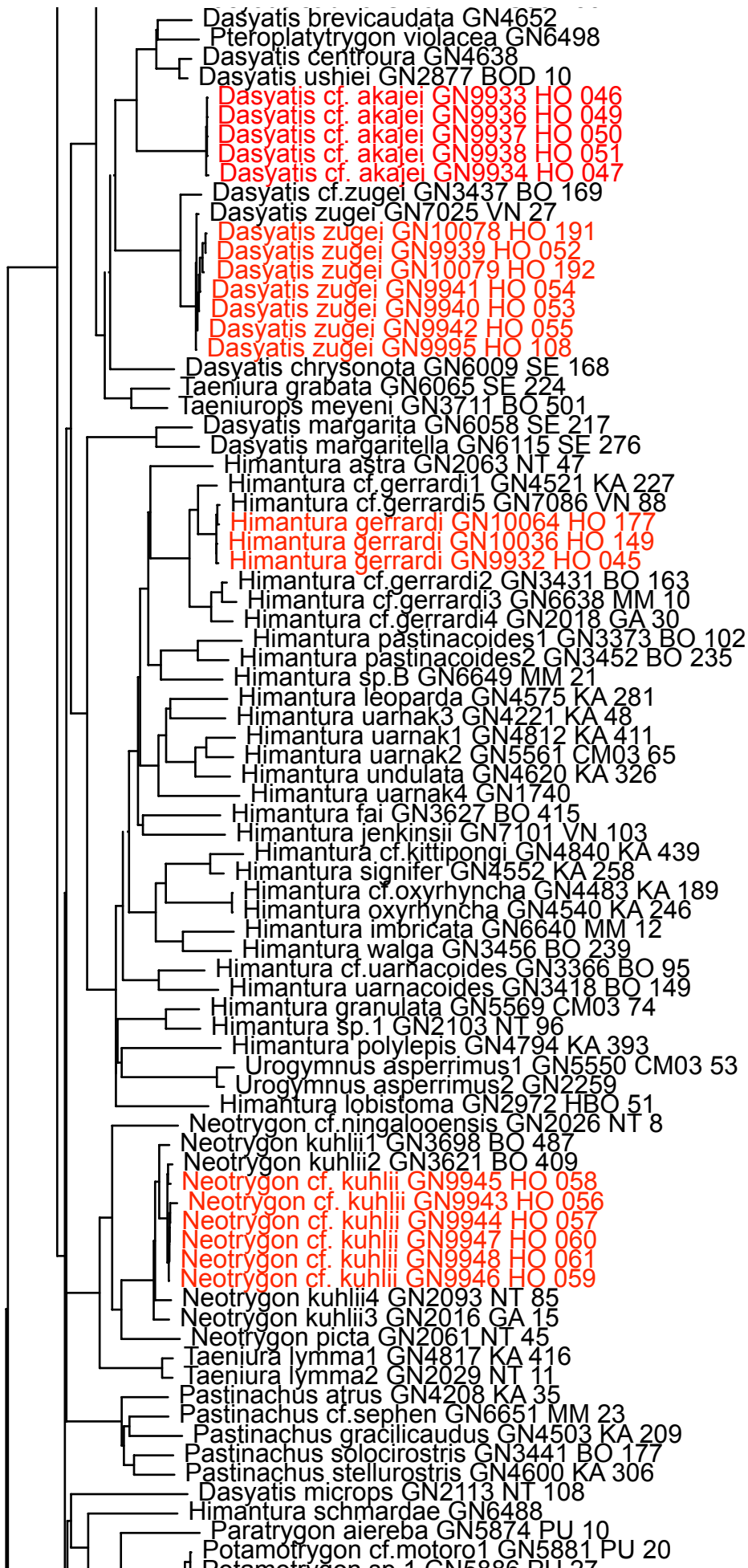
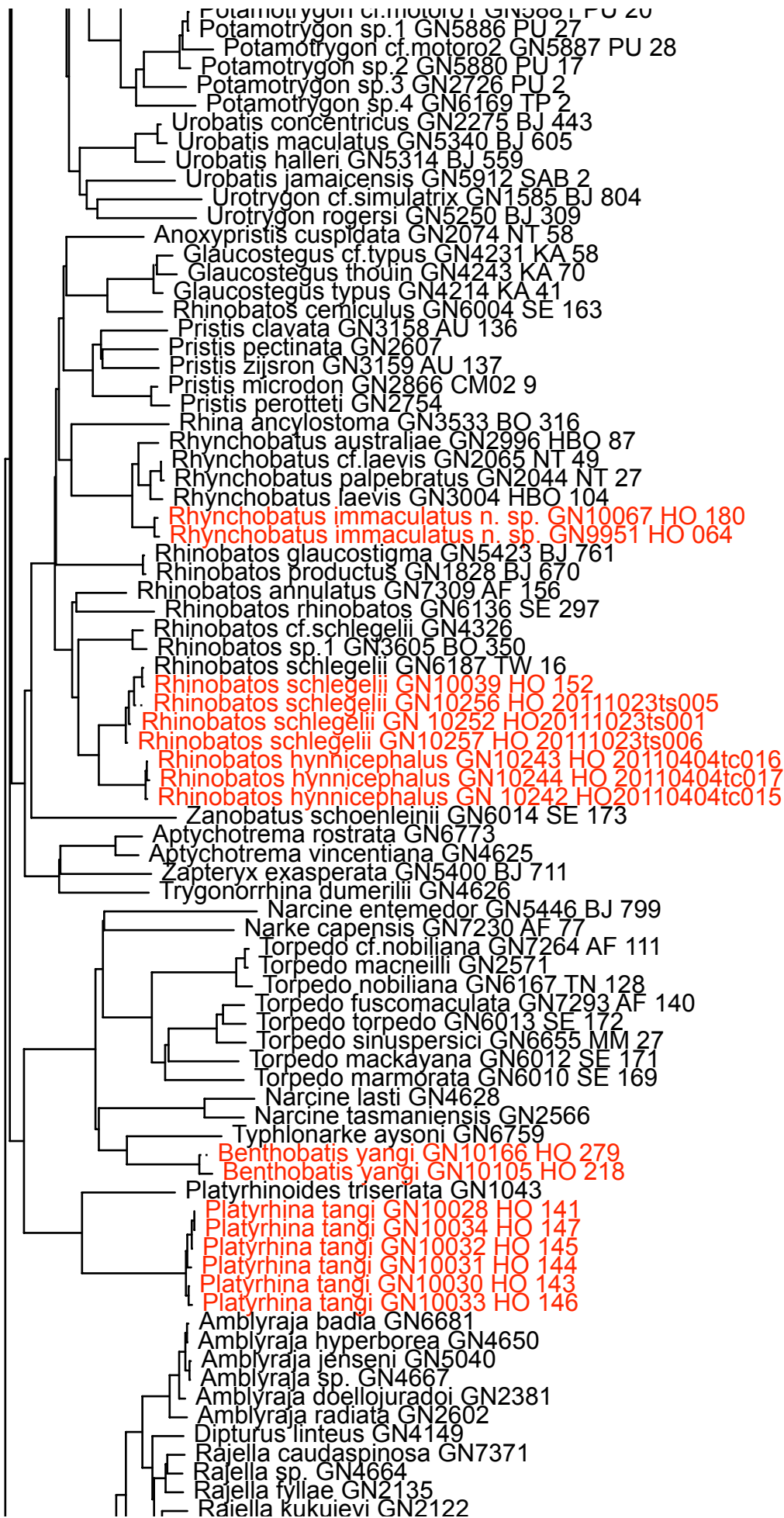


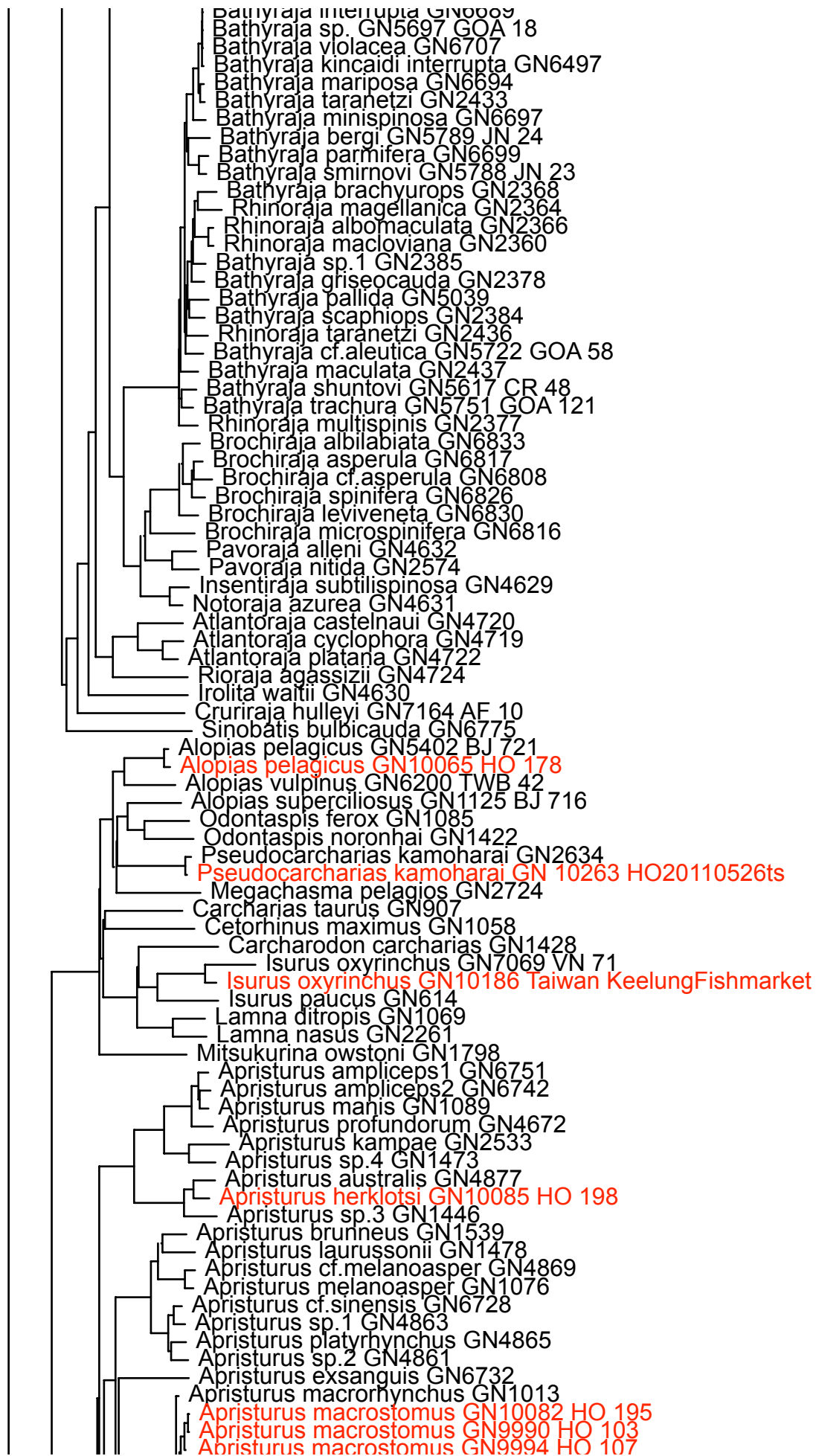
NJ tree

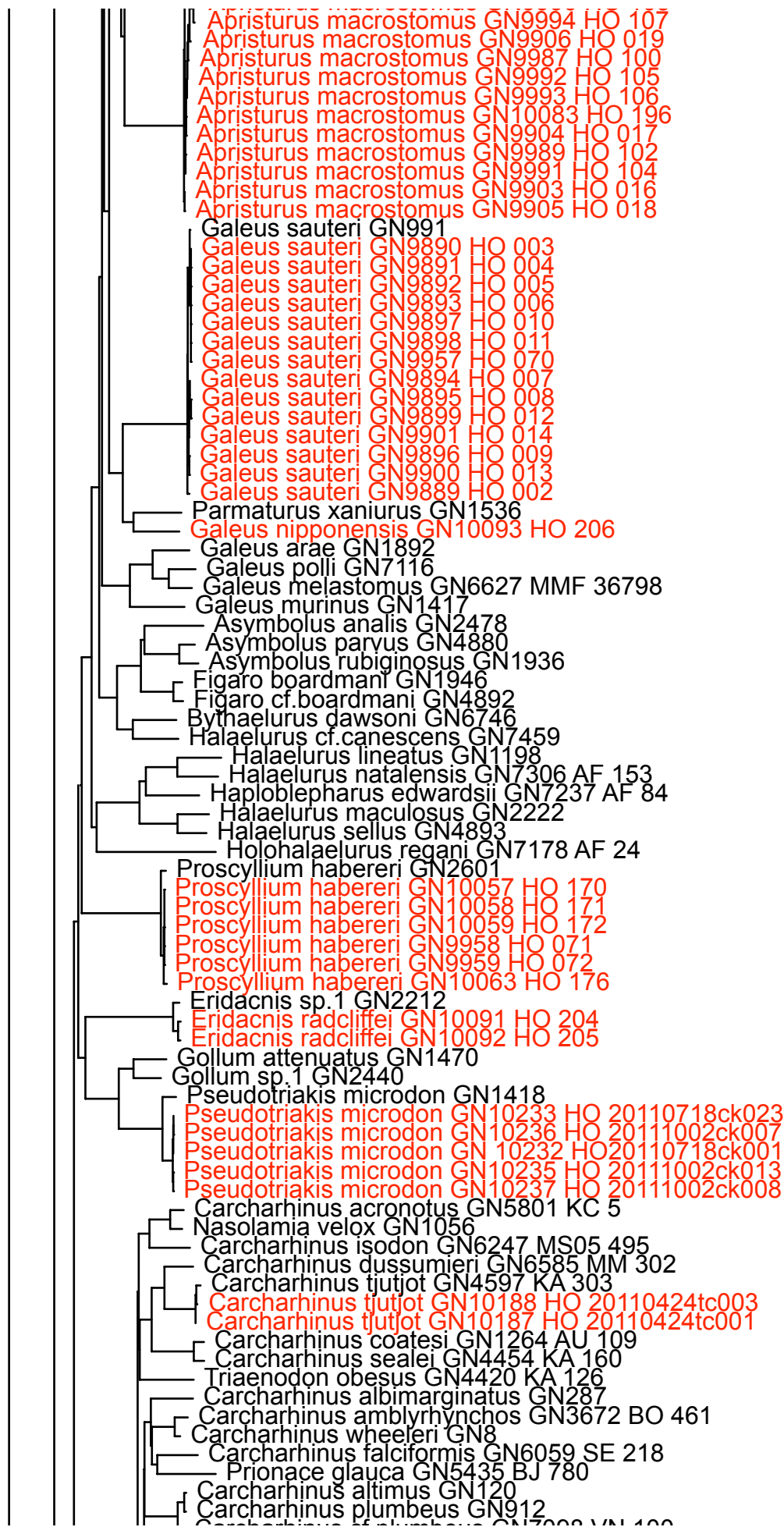


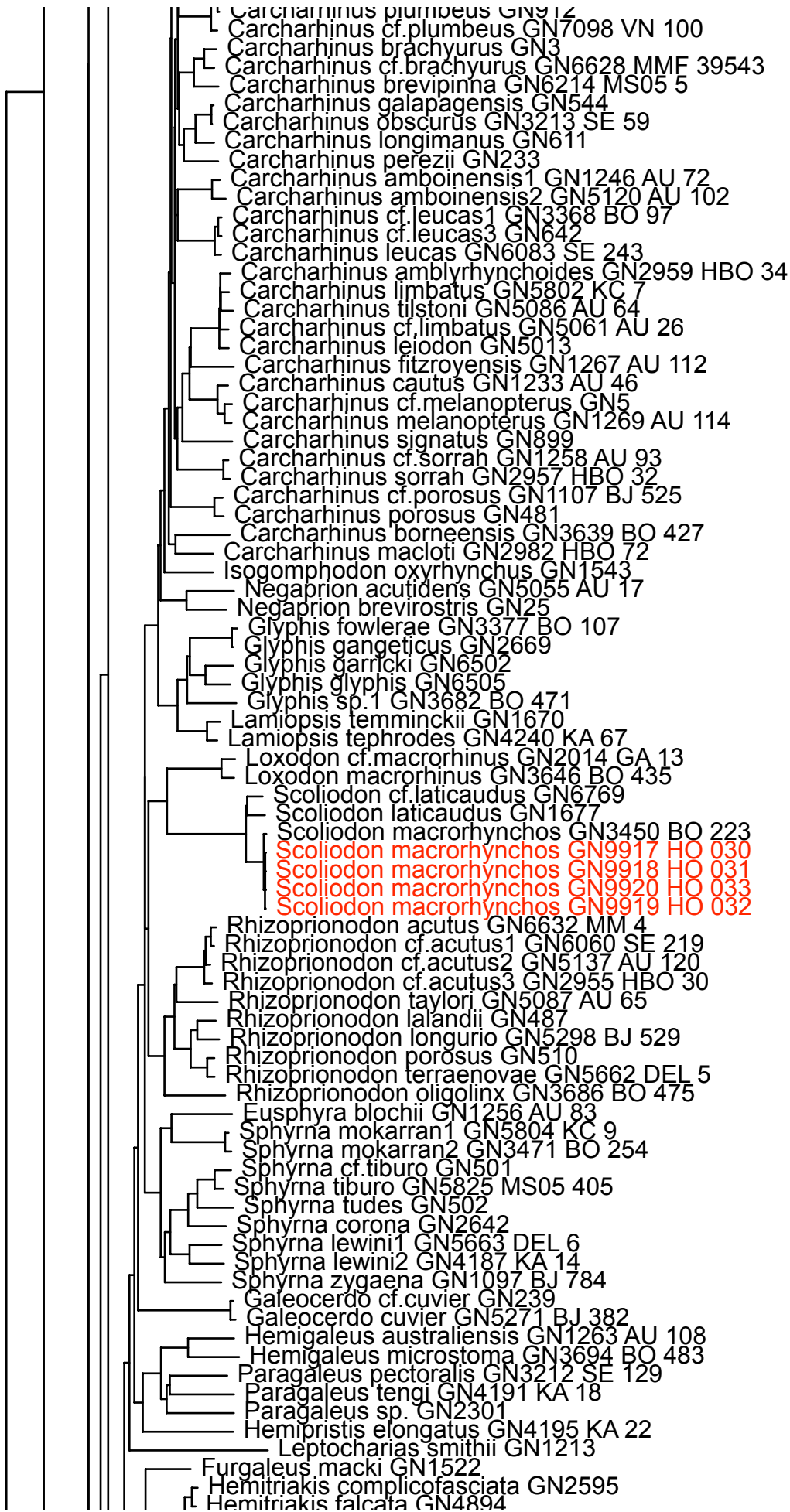


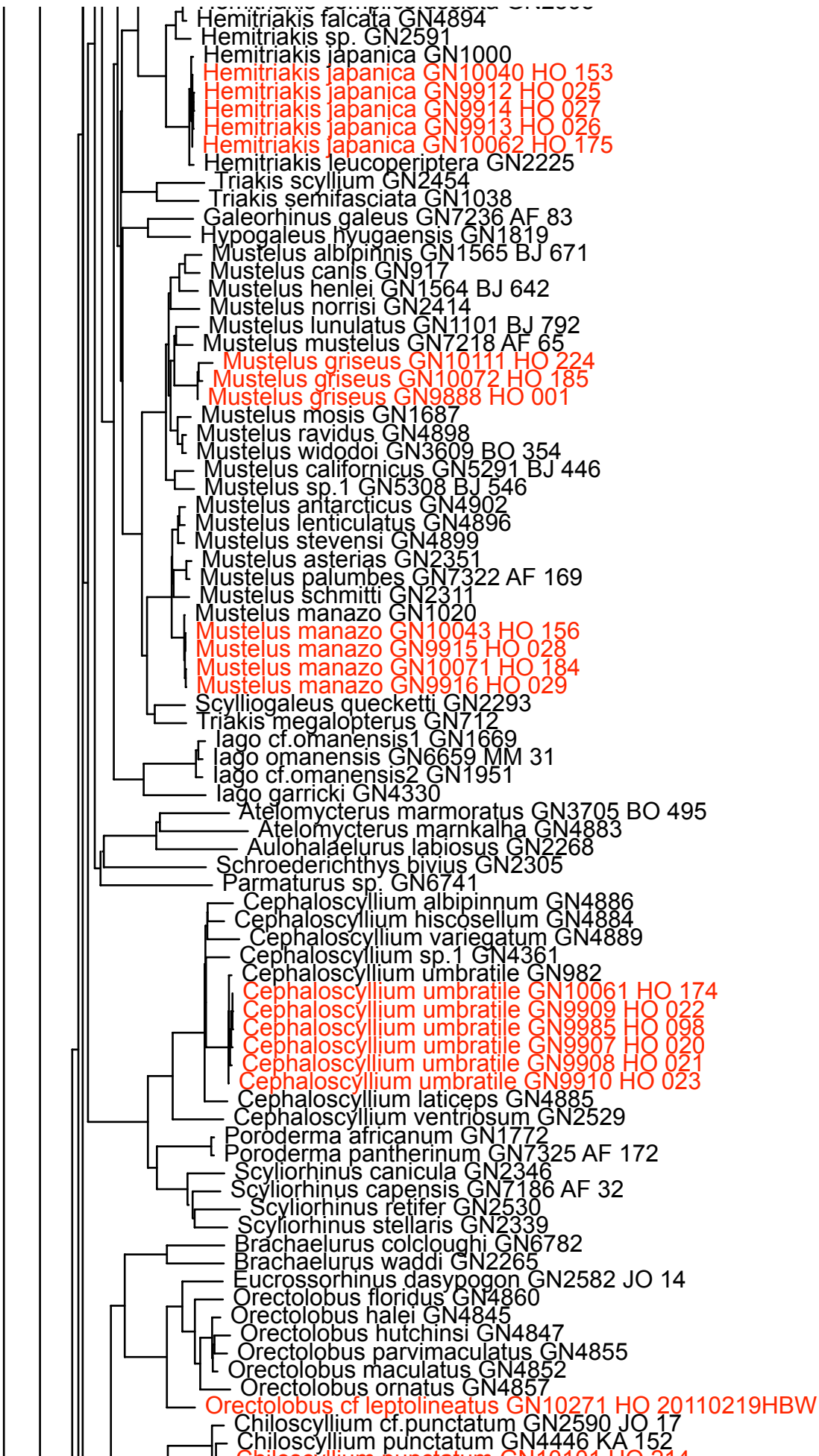


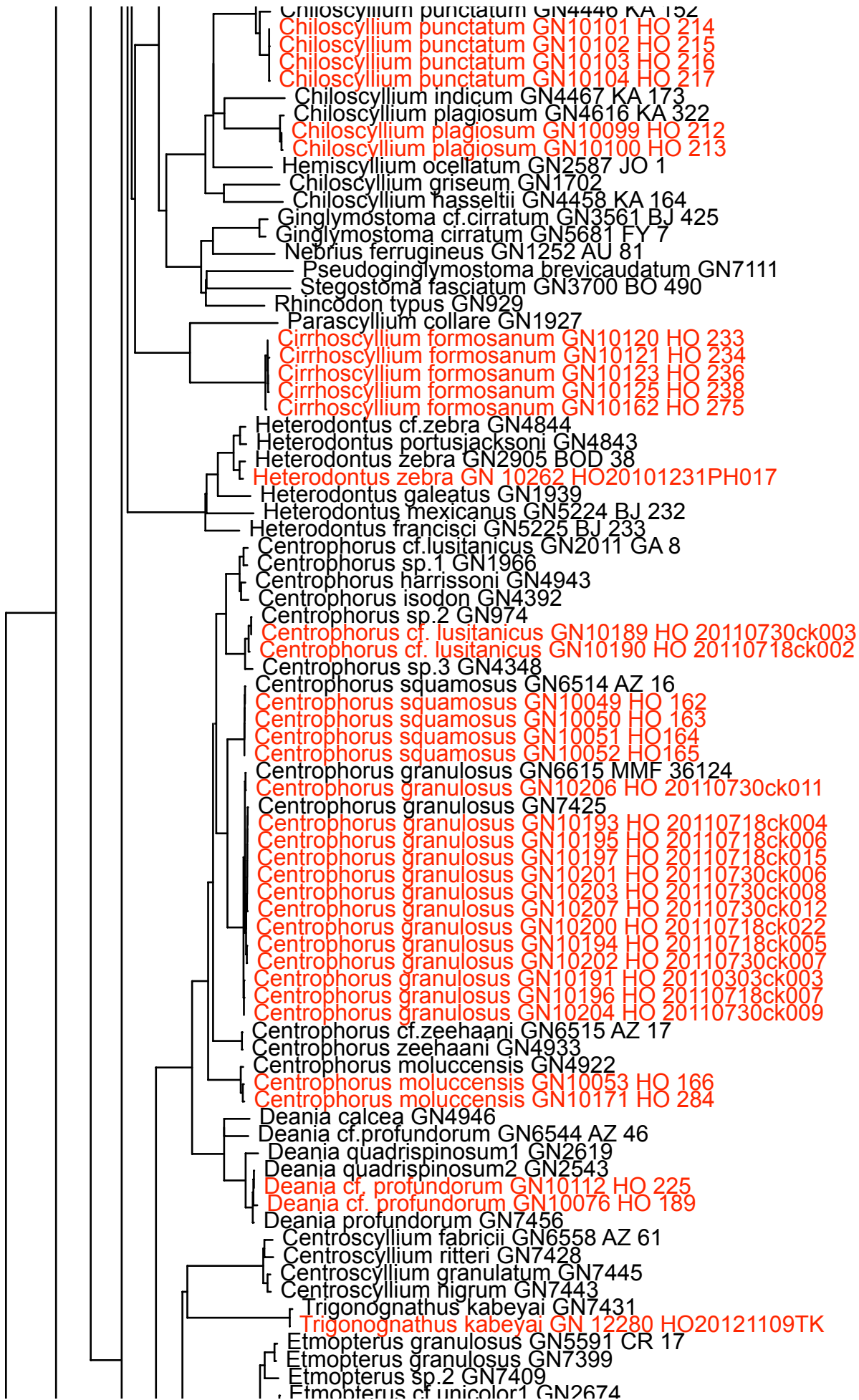




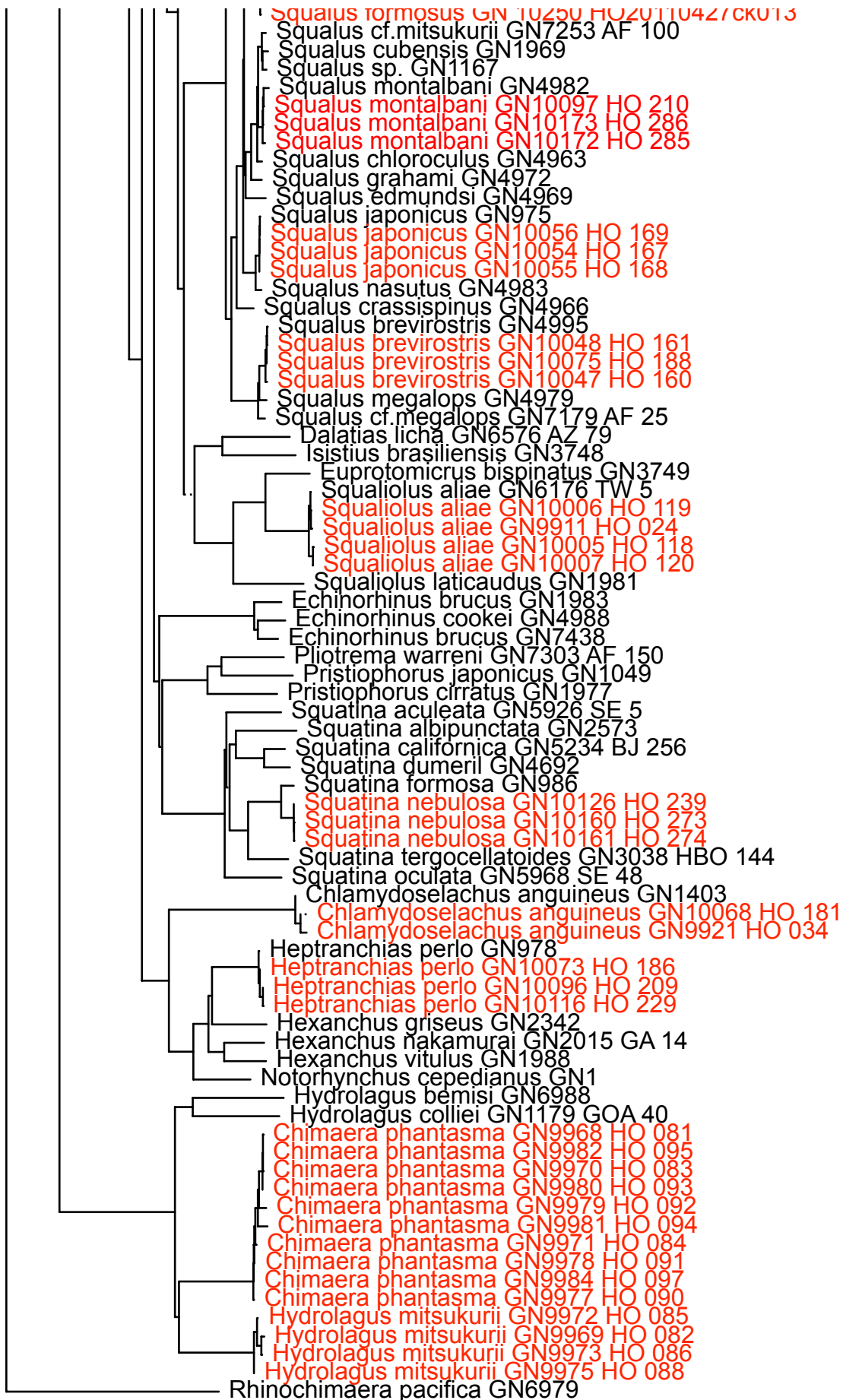








Etmopterus cf. unicolor1 GN2674
 Etmopterus viator GN7415
 Etmopterus viator GN7412
 Etmopterus cf. unicolor2 GN4954
 Etmopterus sp.B GN7398
 Etmopterus spinax GN5162 AZ 7
 Etmopterus princeps GN6608 MMF 36093
 Etmopterus unicolor GN7434
 Etmopterus gracilispinis GN3723
 Etmopterus virens GN3564
 Etmopterus polli GN7420
 Etmopterus schultzi GN7418
 Etmopterus bigelowi GN3582
 Etmopterus pusillus GN6552 AZ 55
 Etmopterus jounqi GN10140 HO 253
 Etmopterus jounqi GN10145 HO 258
 Etmopterus jounqi GN10144 HO 257
 Etmopterus splendidus GN995
 Etmopterus splendidus GN10008 HO 121
 Etmopterus splendidus GN10009 HO 122
 Etmopterus splendidus GN10010 HO 123
 Etmopterus splendidus GN10011 HO 124
 Etmopterus splendidus GN10139 HO 252
 Etmopterus splendidus GN9955 HO 068
 Etmopterus sentosus GN7402
 Etmopterus lucifer GN5594 CR 20
 Etmopterus sp.1 GN7406
 Etmopterus burgessi GN10017 HO 130
 Etmopterus burgessi GN10020 HO 133
 Etmopterus burgessi GN10177 HO 290
 Etmopterus burgessi GN10019 HO 132
 Etmopterus burgessi GN10018 HO 131
 Etmopterus burgessi GN10176 HO 289
 Etmopterus molleri GN997
 Etmopterus cf. molleri GN10138 HO 251
 Etmopterus cf. molleri GN10155 HO 268
 Etmopterus cf. molleri GN10169 HO 282
 Etmopterus cf. molleri GN10015 HO 128
 Etmopterus cf. molleri GN10167 HO 280
 Etmopterus cf. molleri GN10154 HO 267
 Etmopterus cf. molleri GN10014 HO 127
 Etmopterus cf. molleri GN10086 HO 199
 Etmopterus cf. molleri GN10087 HO 200
 Etmopterus cf. molleri GN10170 HO 283
 Etmopterus cf. molleri GN10174 HO 287
 Etmopterus cf. molleri GN10175 HO 288
 Etmopterus brachyurus GN7423
 Etmopterus brachyurus GN10137 HO 250
 Etmopterus brachyurus GN10158 HO 271
 Etmopterus sheikoi GN7440
 Etmopterus sheikoi GN 12278 HO 410
 Etmopterus sheikoi GN 12279 HO 411
 Centroscyrnus sp.1 GN1451
 Centroscyrnus owstonii GN6600 MMF 36058
 Oxynotus bruniensis GN1844
 Oxynotus paradoxus GN1852
 Proscymnodon plunketi GN5607 CR 34
 Zameus ichiharai GN 10224 HO20110730ck002
 Zameus ichiharai GN10227 HO 20111002ck004
 Zameus ichiharai GN10228 HO 20111002ck005
 Zameus ichiharai GN10231 HO 20111002ck012
 Scymnodon ringens GN1703
 Centroscyrnus coelolepis GN6626 MMF 36784
 Centroselachus crepidater GN6617 MMF 36134
 Zameus squamulosus GN4986
 Somniosus microcephalus GN1156
 Somniosus pacificus GN1528
 Somniosus rostratus GN2651
 Cirrhigaleus asper GN4624
 Cirrhigaleus australis GN4944
 Squalus acanthias GN6336 RDM 65
 Squalus acanthias GN5656 CR 89
 Squalus suckleyi GN5688 GOA 8
 Squalus albifrons GN4961
 Squalus formosus GN976
 Squalus formosus GN9922 HO 035
 Squalus formosus GN9923 HO 036
 Squalus formosus GN10045 HO 158
 Squalus formosus GN10251 HO 20110427ck014
 Squalus formosus GN 10250 HO20110427ck013



- 0.01 substitutions/site