



Zootaxa 2947: 1–154 (2011)
www.mapress.com/zootaxa/

Copyright © 2011 · Magnolia Press

Monograph

ISSN 1175-5326 (print edition)

ZOOTAXA

ISSN 1175-5334 (online edition)

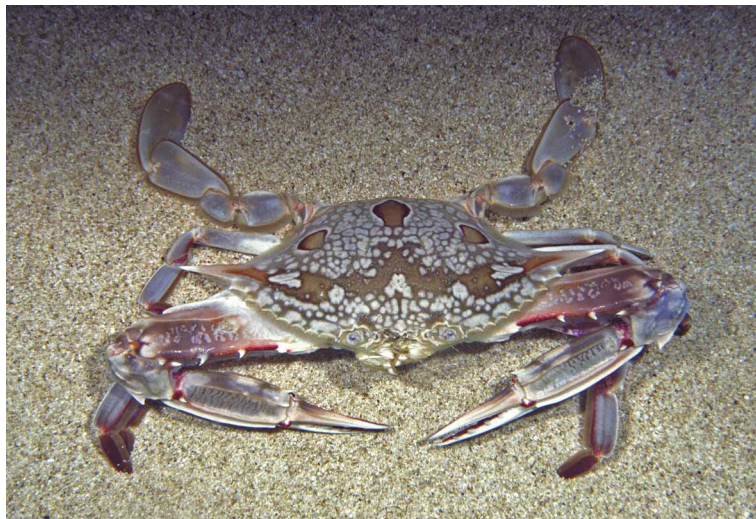
ZOOTAXA

2947

Catalog of the anomuran and brachyuran crabs (Crustacea: Decapoda: Anomura, Brachyura) of the Hawaiian Islands

PETER CASTRO

*Biological Sciences Department, California State Polytechnic University,
Pomona, CA 91768-4032. E-mail: pcastro@csupomona.edu*



Magnolia Press
Auckland, New Zealand

Accepted by S. Ahyong: 22 Mar. 2011; published: 8 Jul. 2011

PETER CASTRO

Catalog of the anomuran and brachyuran crabs (Crustacea: Decapoda: Anomura, Brachyura) of the Hawaiian Islands

(*Zootaxa* 2947)

154 pp.; 30 cm.

8 July 2011

ISBN 978-1-86977-739-5 (paperback)

ISBN 978-1-86977-740-1 (Online edition)

FIRST PUBLISHED IN 2011 BY

Magnolia Press

P.O. Box 41-383

Auckland 1346

New Zealand

e-mail: zootaxa@mapress.com

<http://www.mapress.com/zootaxa/>

© 2011 Magnolia Press

All rights reserved.

No part of this publication may be reproduced, stored, transmitted or disseminated, in any form, or by any means, without prior written permission from the publisher, to whom all requests to reproduce copyright material should be directed in writing.

This authorization does not extend to any other kind of copying, by any means, in any form, and for any purpose other than private research use.

ISSN 1175-5326 (Print edition)

ISSN 1175-5334 (Online edition)

Table of contents

Introduction	4
Biogeography of the Anomura and Brachyura of the Hawaiian Islands	7
Acknowledgements	12
List of taxa	13
Infraorder Anomura	13
Superfamily Chirostyloidea	13
Family Chirostylidae	13
Family Eumunididae	13
Superfamily Galattheoidea	14
Family Galatheidae	14
Family Munididae	15
Family Porcellanidae	16
Superfamily Hippoidea	17
Family Albuneidae	17
Family Hippidae	18
Superfamily Lithodoidea	18
Family Lithodidae	18
Superfamily Paguroidea	19
Family Coenobitidae	19
Family Diogenidae	19
Family Paguridae	26
Family Parapaguridae	29
Infraorder Brachyura	31
Superfamily Dromioidea	31
Family Dromiidae	31
Family Dynomenidae	33
Superfamily Homoloidea	34
Family Homolidae	36
Family Latreilliidae	36
Superfamily Raninoidea	37
Family Raninidae	37
Superfamily Aethroidea	38
Family Aethridae	38
Superfamily Calappoidea	39
Family Calappidae	39
Superfamily Cancroidea	40
Family Cancridae	40
Superfamily Carpiloidea	41
Family Carpiliidae	41
Superfamily Dairoidea	41
Family Dairidae	41
Superfamily Dorippoidea	41
Family Ethusidae	41
Superfamily Eriphioidea	42
Family Dairoididae	42
Family Eriphiidae	43
Family Menippidae	43
Family Oxiidae	43
Family Platyxanthidae	44
Superfamily Goneplacoidea	44
Family Euryplacidae	44
Family Goneplacidae	45
Family Mathildellidae	45
Family Progeryonidae	45
Superfamily Leucosoidea	46
Family Leucosiidae	46
Superfamily Majoidea	48
Family Epialtidae	48
Family Inachidae	51
Family Majidae	53
Superfamily Palicoidea	54
Family Crossotonotidae	54

Family Palicidae	54
Superfamily Parthenopoidea	56
Family Parthenopidae	56
Superfamily Pilumnoidea	60
Family Eumedonidae	60
Family Pilumnidae	60
Superfamily Portunoidea	63
Family Carcinidae	63
Family Macropipidae	63
Family Portunidae	64
Superfamily Pseudozioidea	77
Family Pseudoziidae	77
Superfamily Trapezoidea	78
Family Domeciidae	78
Family Tetraliidae	79
Family Trapeziidae	79
Superfamily Trichodactyloidea	83
Family Trichodactylidae	83
Superfamily Xanthoidea	83
Family Panopeidae	83
Family Xanthidae	84
Superfamily Cryptochiroidea	111
Family Cryptochiridae	111
Superfamily Grapsoidea	113
Family Gecarcinidae	113
Family Grapsidae	113
Family Percnidae	117
Family Plagusiidae	118
Family Sesarmidae	119
Family Varunidae	121
Superfamily Ocypodoidea	122
Family Macrophthalmidae	122
Family Ocypodidae	123
Superfamily Pinnotheroidea	124
Family Aphanodactylidae	124
References	124
Index	xxx

Abstract

A total of 68 species of anomuran and 284 living species of brachyuran crabs are listed as reliably occurring in the Hawaiian Islands. These figures include 12 species of brachyurans known to have been introduced, but not four species of anomurans and nine brachyurans whose identifications are questionable and two species of anomurans and 14 brachyurans that appear to have been recorded from the islands in error. Five species of anomurans and one brachyuran so far only known from the Midway Islands are included in the total number of Hawaiian species, but not five species of brachyurans only known from Johnston Atoll that are included only for their biogeographical interest. The Hawaiian crab fauna shows a predominance of wide ranging Indo-West Pacific species (41% of Anomura, 58% of Brachyura), some degree of endemism (37% of Anomura, 14% of Brachyura), but it is much impoverished in terms of total number of species when compared with the crab fauna of the Indo-Malayan Archipelago, regarded as a center of diversification for many marine taxa. Several taxonomic changes are also made: *Trapezia neglecta* Castro, 2003, is ascertained to be a junior synonym of *T. intermedia* Miers, 1886, and a lectotype and a paralectotype are selected for *Grapsus oceanicus* Hombron & Jacquinot, 1846 (Grapsidae).

Key words: Crustacea, Anomura, Brachyura, Hawaiian Islands, biogeography, biodiversity, endemism, introduced species, taxonomy

Introduction

Except for relatively small collections reported by Owen (1839), Randall (1840), and Gibbes (1850), the first important collections of anomuran and brachyuran crabs in the Hawaiian Islands were made by some of the scientific