



<http://dx.doi.org/10.11646/zootaxa.3887.5.3>

<http://zoobank.org/urn:lsid:zoobank.org:pub:30D2BB9D-7788-444F-9094-E49F32D38273>

A new annelid species from whalebones in Greenland and aquaculture sites in Newfoundland: *Ophryotrocha cyclops*, sp. nov. (Eunicida: Dorvilleidae)

FLORA SALVO^{1,6}, HELENA WIKLUND², SUZANNE C. DUFOUR¹, DOUNIA HAMOUTENE³, GERHARD POHLE⁴ & KATRINE WORSAAE⁵

¹Department of Biology, Memorial University of Newfoundland, St John's, NL A1B 3X9, Canada

²Natural History Museum, Life Sciences Department, Cromwell Rd, London, SW7 5BD, United Kingdom

³Fisheries and Oceans Canada, Northwest Atlantic Fisheries Center, P.O. Box 5667, St John's, NL A1C 5X1, Canada

⁴Huntsman Marine Science Centre, 1 Lower Campus Road, St. Andrews, NB E5B 2L7, Canada

⁵Marine Biological Section, Department of Biology, University of Copenhagen, Universitetsparken 4, DK-2100 Copenhagen, Denmark

⁶Corresponding author. E-mail: flora.salvo@yahoo.fr

Abstract

A new species of *Ophryotrocha* was discovered on whalebones in Greenland (120 m depth) and at finfish aquaculture sites in Newfoundland (30–70 m depth), where it is considered to be a bioindicator of aquaculture-related organic enrichment. Phylogenetic analyses based on three genes (COI, 16S mitochondrial and H3 nuclear genes) show close affinities with *O. lobifera* and *O. craigsmithi*, two species also found on both whalebones and at aquaculture sites (North Sea), and with *O. shieldsi* from aquaculture sites in Tasmania. The new species is named *Ophryotrocha cyclops* sp. nov. due to the juxtaposed, quasi-fused central eyes that give the impression of a single eye in live specimens.

Key words: Phylogeny, organic enrichment, taxonomy, annelids

Introduction

In marine ecosystems, organic matter enrichment linked to natural events or human activities modifies benthic community structure in both shallow water (coastal eutrophication, aquaculture) and deeper habitats (cold seeps, whale falls) (Pearson & Rosenberg 1978; Sibuet & Olu-Le Roy 2003; Smith & Baco 2003; Borja & Muxika 2005; Diaz & Rosenberg 2008). Opportunistic species often colonize benthic habitats subjected to organic enrichment; an overlap in species composition has been observed between habitats experiencing organic enrichment from anthropogenic versus natural causes (e.g. Glover *et al.* 2005; Wiklund *et al.* 2009).

Recently, opportunistic annelid complexes (termed OPC) were observed on rocky substrates underneath finfish aquaculture cages on the south coast of Newfoundland, and were linked to fish farm activity (Murray *et al.* 2012; Hamoutene *et al.* 2013). OPC are visible during video surveys of the seafloor: they typically form dense colonies surrounded by mucus that can completely obstruct the view of the substrate (Hamoutene *et al.* 2013). Opportunistic annelids at aquaculture sites can also live within sediment or flocculent matter and co-occur with mats of sulfur oxidizing *Beggiatoa* spp. (Grant *et al.* 1995; Capone *et al.* 1996; Saravanakumar *et al.* 2012; Hamoutene *et al.* 2013). Annelid-bacterial mat associations were also reported at other organically enriched habitats such as hydrothermal vents, cold seeps and wood or whale falls (Blake & Hilbig 1990; Weiss & Hilbig 1992; Sahling *et al.* 2002; Levin *et al.* 2009; Huusgaard *et al.* 2012).

Annelids forming OPC in Newfoundland were identified as belonging to the genus *Ophryotrocha* Claparède & Meczniow, 1869, family Dorvilleidae (Murray *et al.* 2012). Dorvilleids live in a range of habitats from shallow water (Hilbig & Blake 1991; Prevedelli *et al.* 2005) to the deep sea, including extreme habitats such as methane seeps (Levin & Michener 2002; Levin *et al.* 2006; Decker & Olu 2010; Thurber *et al.* 2010), hydrothermal vents (Blake & Hilbig 1990; Weiss & Hilbig 1992; Bergquist *et al.* 2007; Paxton & Morineaux 2009), aquaculture sites

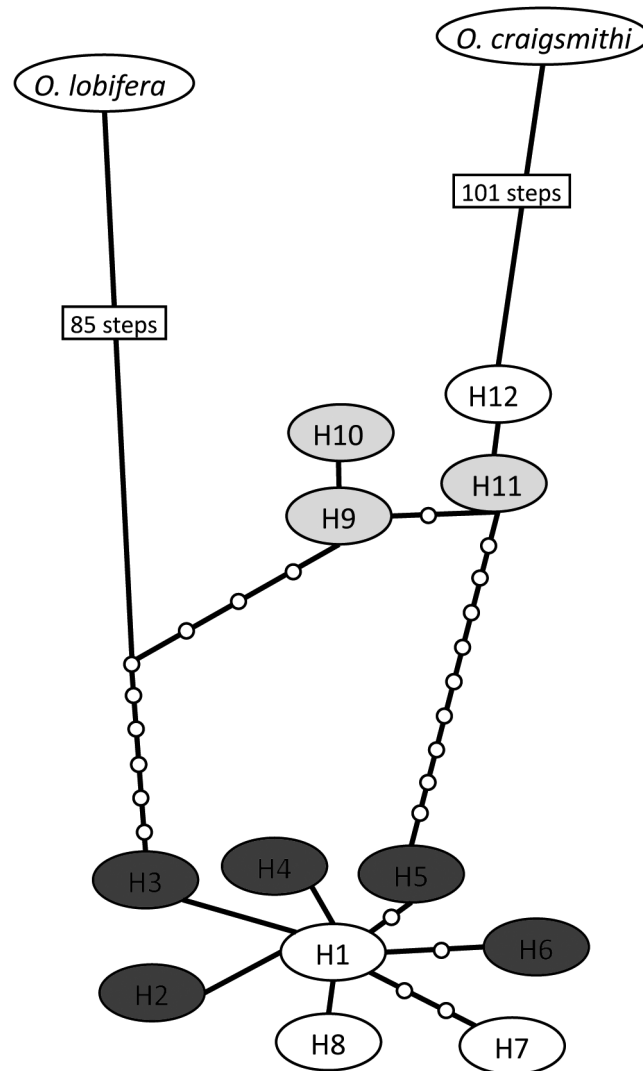


FIGURE 4. Haplotype network from TCS using fifteen COI sequences from the new species, *Ophryotrocha cyclops*, resulting in twelve haplotypes. Light grey: specimens from the Greenland site; white: specimens from Newfoundland sites A and B; dark grey: specimens from Newfoundland site C.

Acknowledgments

Financial support for this project is provided by the Program of Regulatory Aquaculture Research (PARR, to DH) and the Freja scholarship (University of Copenhagen, to KW). We thank D. Drover, T. Bungay, and K. Burt from Fisheries and Oceans Canada for their technical support at the Newfoundland aquaculture sites. The Genomics and Proteomics Lab (CREAIT Network, Memorial University of Newfoundland) helped with gene sequencing. Thanks to the aquaculture industry for having allowed access to their sites. We are indebted to Søren Rysgaard, Lars Heilman and their colleagues at the Greenland Institute of Natural Resources, Nuuk (GINR) for their great logistic support in the collecting of the Greenlandic material in Nuuk, Greenland.

References

Åkesson, B. (1973) Morphology and life history of *Ophryotrocha maculata* sp. n. (Polychaeta, Dorvilleidae). *Zoologica*

- Scripta*, 2, 141–144.
<http://dx.doi.org/10.1111/j.1463-6409.1974.tb00745.x>
- Åkesson, B. (1974) Reproduction and larval morphology of five *Ophryotrocha* species (Polychaeta, Dorvilleidae). *Zoologica Scripta*, 2, 145–155.
<http://dx.doi.org/10.1111/j.1463-6409.1974.tb00746.x>
- Åkesson, B. (1976) Morphology and life cycle of *Ophryotrocha diadema*, a new polychaete species from California. *Ophelia*, 15 (1), 23–35.
<http://dx.doi.org/10.1080/00785326.1976.10425446>
- Åkesson, B. & Rice, S.A. (1992) Two new *Dorvillea* (Polychaeta, Dorvilleidae) with obligate asexual reproduction. *Zoologica Scripta*, 21, 351–362.
<http://dx.doi.org/10.1111/j.1463-6409.1992.tb00337.x>
- Banse, K. (1963) Polychaetous annelids from Puget Sound and the San Juan Archipelago, Washington. *Proceedings of the Biological Society of Washington*, 76, 197–208.
- Bely, A.E. & Wray, G.A. (2004) Molecular phylogeny of nauidid worms (Annelida: Clitellata) based on cytochrome oxidase I. *Molecular Phylogenetics and Evolution*, 30, 50–63.
[http://dx.doi.org/10.1016/s1055-7903\(03\)00180-5](http://dx.doi.org/10.1016/s1055-7903(03)00180-5)
- Bergquist, D.C., Eckner, J.T., Urcuyo, I.A., Cordes, E.E., Hourdez, S., Macko, S.A. & Fisher, C.R. (2007) Using stable isotopes and quantitative community characteristics to determine a local hydrothermal vent food web. *Marine Ecology Progress Series*, 330, 49–65.
<http://dx.doi.org/10.3354/meps330049>
- Blake, J.A. (1985) Polychaeta from the vicinity of deep-sea geothermal vents in the eastern Pacific. I. Euphrosinidae, Phyllodocidae, Hesionidae, Nereididae, Glyceridae, Dorvilleidae, Orbiniidae, and Maldanidae. *Bulletin of the Biological Society of Washington*, 6, 67–101.
- Blake, J.A. & Hilbig, B. (1990) Polychaeta from the vicinity of deep-sea hydrothermal vents in the eastern Pacific. II. New species and records from the Juan de Fuca and Explorer Ridge systems. *Pacific Science*, 44, 219–253.
- Borja, A. & Muxika, I. (2005) Guidelines for the use of AMBI (AZTI's Marine Biotic Index) in the assessment of the benthic ecological quality. *Marine Pollution Bulletin*, 50, 787–789.
<http://dx.doi.org/10.1016/j.marpolbul.2005.04.040>
- Capone, D.G., Weston, D.P., Miller, V. & Shoemaker, C. (1996) Antibacterial residues in marine sediments and invertebrates following chemotherapy in aquaculture. *Aquaculture*, 145, 55–75.
[http://dx.doi.org/10.1016/s0044-8486\(96\)01330-0](http://dx.doi.org/10.1016/s0044-8486(96)01330-0)
- Chamberlin, R.V. (1919) The Annelida Polychaeta. *Memoirs of the Museum of Comparative Zoology at Harvard College*, 48, 1–514.
- Claparède, E. & Mecznikow, E. (1869) Beiträge zur Erkenntniss der Entwicklungsgeschichte der Chaetopoden. *Zeitschrift für wissenschaftliche Zoologie*, 16, 163–205.
<http://dx.doi.org/10.1111/j.1096-3642.1924.tb01490.x>
- Clement, M., Posada, D. & Crandall, K.A. (2000) TCS: a computer program to estimate gene genealogies. *Molecular Ecology*, 9 (10), 1657–1660.
<http://dx.doi.org/10.1046/j.1365-294x.2000.01020.x>
- Colgan, D., Ponder, W.F. & Egglar, P.E. (2000) Gastropod evolutionary rates and phylogenetic relationships assessed using partial 28S rDNA and histone H3 sequences. *Zoologica Scripta*, 29, 29–63.
<http://dx.doi.org/10.1046/j.1463-6409.2000.00021.x>
- Crossland, C. (1924) Polychaeta of tropical East Africa, the Red Sea, and Cap Verde Islands, collected by Cyril Crossland, and of the Maldive Archipelago collected by Professor Stanley Gardiner, M.A., F.R.S. *Zoological Society of London*, 47, 1–106.
<http://dx.doi.org/10.1111/j.1096-3642.1924.tb01490.x>
- Dahlgren, T.G., Åkesson, B., Schander, C., Halanych, K.M. & Sundberg, P. (2001) Molecular phylogeny of the model annelid *Ophryotrocha*. *The Biological Bulletin*, 201, 193–203.
<http://dx.doi.org/10.2307/1543334>
- Decker, C. & Olu, K. (2010) Does macrofaunal nutrition vary among habitats at the Hakon Mosby mud volcano? *Cahiers de Biologie Marine*, 51, 361–367.
- DFO (2013) Standard operating procedures (SOP) for underwater video camera system. Available from: <http://www.dfo-mpo.gc.ca/library/347683.pdf> (accessed 1 February 2014)
- Diaz, R.J. & Rosenberg, R. (2008) Spreading dead zones and consequences for marine ecosystems. *Science*, 321, 926–929.
<http://dx.doi.org/10.1126/science.1156401>
- Drummond, A.J., Ashton, B., Buxton, S., Cheung, M., Cooper, A., Heled, J., Kearse, M., Moir, R., Stones-Havas, S. & Sturrock, S. (2010) Geneious v6.1.6. Available from: <http://www.geneious.com> (accessed 11 November 2014)
- Edgar, R.C. (2004) MUSCLE: multiple sequence alignment with high accuracy and high throughput. *Nucleic Acids Research*, 32, 1792–1797.
<http://dx.doi.org/10.1093/nar/gkh340>
- Esmark, L. (1874) *Eteonopsis geryonicola*. *Forhandlinger i Videnskabselskabet i Christiania*, 497–498.

- Folmer, O., Black, M., Hoeh, W., Lutz, R. & Vrijenhoek, R. (1994) DNA primers for amplification of mitochondrial cytochrome c oxidase subunit I from diverse metazoan invertebrates. *Molecular Marine Biology and Biotechnology*, 3, 294–299.
- Glover, A.G., Källström, B., Smith, C.R. & Dahlgren, T.G. (2005) World-wide whale worms? A new species of *Osedax* from the shallow north Atlantic. *Proceedings of the Royal Society B: Biological Sciences*, 272, 2587–2592.
<http://dx.doi.org/10.1098/rspb.2005.3275>
- Grant, J., Hatcher, A., Scott, D., Pocklington, P., Schafer, C. & Winters, G. (1995) A multidisciplinary approach to evaluating impacts of shellfish aquaculture on benthic communities. *Estuaries and Coasts*, 18, 124–144.
<http://dx.doi.org/10.2307/1352288>
- Grube, A.E. (1855) Beschreibung neuer oder wenig bekannter Anneliden. *Archiv für Naturgeschichte*, 21, 81–136.
- Hamoutene, D. (2014) Sediment sulphides and redox potential associated with spatial coverage of *Beggiatoa* spp. at finfish aquaculture sites in Newfoundland, Canada. *ICES Journal of Marine Science*, 71 (5), 1153–1157.
<http://dx.doi.org/10.1093/icesjms/fst223>
- Hamoutene, D., Mabrouk, G., Sheppard, L., MacSween, C., Coughlan, E. & Grant, C. (2013) Validating the use of *Beggiatoa* sp. and opportunistic polychaete worm complex (OPC) as indicators of benthic habitat condition at finfish aquaculture sites in Newfoundland. *Canadian Technical Report of Fisheries and Aquatic Sciences*, 3028, 1–26.
- Heggøy, K.K., Schander, C. & Åkesson, B. (2007) The phylogeny of the annelid genus *Ophryotrocha* (Dorvilleidae). *Marine Biology Research*, 3, 412–420.
<http://dx.doi.org/10.1080/17451000701695361>
- Hilbig, B. & Blake, J.A. (1991) Dorvilleidae (Annelida: Polychaeta) from the US Atlantic slope and rise. Description of two new genera and 14 new species, with a generic revision of *Ophryotrocha*. *Zoologica Scripta*, 20, 147–183.
<http://dx.doi.org/10.1111/j.1463-6409.1991.tb00281.x>
- Huth, W. (1933) *Ophryotrocha*-Studien. Zur Cytologie der Ophryotrochen. *Zeitschrift für Zellforschung und Mikroskopische Anatomie*, 20, 309–381. [Berlin]
- Huusgaard, R.S., Vismann, B., Kühl, M., Macnaughton, M. & Colmander, V. (2012) The potent respiratory system of *Osedax mucofloris* (Siboglinidae, Annelida) - a prerequisite for the origin of bone-eating *Osedax*? *PLoS ONE*, 7, e35975.
<http://dx.doi.org/10.1371/journal.pone.0035975>
- Josefson, A. (1975) *Ophryotrocha longidentata* sp. n. and *Dorvillea erucaeformis* (Malmgren) (Polychaeta, Dorvilleidae) from the west coast of Sweden. *Zoologica Scripta*, 4, 49–54.
<http://dx.doi.org/10.1111/j.1463-6409.1975.tb00719.x>
- Karakassis, I., Tsapakis, M., Hatziyanni, E., Papadopoulou, K.N. & Plaiti, W. (2000) Impact of cage farming of fish on the seabed in three Mediterranean coastal areas. *ICES Journal of Marine Science*, 57, 1462–1471.
<http://dx.doi.org/10.1006/jmsc.2000.0925>
- Katoh, K., Misawa, K., Kuma, K.-I. & Miyata, T. (2002) MAFFT: a novel method for rapid multiple sequence alignment based on fast Fourier transform. *Nucleic Acids Research*, 30, 3059–3066.
<http://dx.doi.org/10.1093/nar/gkf436>
- Kirkegaard, J.B. (1977) A new species of *Iphitime* (Polychaeta: Iphitimidae) living under the tail of *Hyas* (Crustacea: Decapoda) in the Oslo Fjord. In: Fauchald, D.J.R.A.K. (Ed.), *Essays on polychaetous annelids in memory of Dr. Olga Hartman*. Los Angeles, pp. 199–209.
- La Greca, M. & Bacci, G. (1962) Una nuova specie di *Ophryotrocha* delle coste tirreniche. *Bollettino di Zoologia*, 29, 13–23.
<http://dx.doi.org/10.1080/11250006209436453>
- Levin, L.A. & Michener, R.H. (2002) Isotopic evidence for chemosynthesis-based nutrition of macrobenthos: the lightness of being at Pacific methane seeps. *Limnology and Oceanography*, 47, 1336–1345.
<http://dx.doi.org/10.4319/lo.2002.47.5.1336>
- Levin, L.A., Ziebis, W., Mendoza, G.F., Growney-Cannon, V. & Walther, S. (2006) Recruitment response of methane-seep macrofauna to sulfide-rich sediments: An in situ experiment. *Journal of Experimental Marine Biology and Ecology*, 330, 132–150.
<http://dx.doi.org/10.1016/j.jembe.2005.12.022>
- Levin, L.A., Mendoza, G.F., Konotchick, T. & Lee, R. (2009) Macrobenthos community structure and trophic relationships within active and inactive Pacific hydrothermal sediments. *Deep Sea Research Part II: Topical Studies in Oceanography*, 56, 1632–1648.
<http://dx.doi.org/10.1016/j.dsr2.2009.05.010>
- Levin, L.A., Mendoza, G.F., Gonzalez, J.P., Thurber, A.R. & Cordes, E.E. (2010) Diversity of bathyal macrofauna on the northeastern Pacific margin: the influence of methane seeps and oxygen minimum zones. *Marine Ecology*, 31, 94–110.
<http://dx.doi.org/10.1111/j.1439-0485.2009.00335.x>
- Levin, L.A., Ziebis, W., Mendoza, G., Bertics, V.J., Washington, T., Gonzalez, J., Thurber, A.R., Ebbe, B. & Lee, R.W. (2013) Ecological release and niche partitioning under stress: lessons from dorvilleid polychaetes in sulfidic sediments at methane seeps. *Deep Sea Research Part II: Topical Studies in Oceanography*, 92, 214–233.
<http://dx.doi.org/10.1016/j.dsr2.2013.02.006>
- Maddison, W.P. & Maddison, D.R. (2011) Mesquite: a modular system for evolutionary analysis. Version 2.75. Available from: <http://mesquiteproject.org> (accessed 11 November 2014)

- Malmgren, A.J. (1865) Nordiska Hafs-Annulater. *Öfversigt af K. Vetenskapsakademiens förhandlingar*, 22, 181–192.
- McIntosh, W.C. (1869) On the structure of the British nemerteans, and some new British annelids. *Transactions of the Royal Society of Edinburgh*, 25, 305–433.
<http://dx.doi.org/10.1017/s0080456800035262>
- Miura, T. (1997) Two new species of the genus *Ophryotrocha* (Polychaeta, Iphitimiidae) from Kagoshima Bay. *Bulletin of Marine Science*, 60, 300–305.
- Müller, O.F. (1776) *Zoologicae Danicae Prodomus, seu Animalium Daniae et Norvegiae indigenarum characteres, nomina et synonyma imprimis popularium*. Hallegeriis, Havniae Copenhagen, 282 pp.
<http://dx.doi.org/10.5962/bhl.title.13268>
- Murray, H.M., Gallardi, D., Gidge, Y.S. & Sheppard, G.L. (2012) Histology and mucous histochemistry of the integument and body wall of a marine polychaete worm, *Ophryotrocha n. sp.* (Annelida: Dorvilleidae) associated with Steelhead trout cage sites on the South coast of Newfoundland. *Journal of Marine Biology*, 2012, 1–7.
<http://dx.doi.org/10.1155/2012/202515>
- Núñez, J., Riera, R. & Maggio, Y. (2013) A new *Ophryotrocha* species (Polychaeta: Dorvilleidae) from circalittoral seabeds of the Cantabrian Sea (north-east Atlantic Ocean). *Journal of the Marine Biological Association of the United Kingdom*, 94, 115–119.
<http://dx.doi.org/10.1017/s0025315413001082>
- Nylander, J.A.A. (2004) *MrModeltest v2*. Program distributed by the author. Evolutionary Biology Centre, Uppsala University.
- Ockelmann, K.W. & Åkesson, B. (1990) *Ophryotrocha socialis* n. sp., a link between two groups of simultaneous hermaphrodites within the genus (Polychaeta, Dorvilleidae). *Ophelia*, 31 (3), 145–162.
<http://dx.doi.org/10.1080/00785326.1990.10430858>
- Oug, E. (1978) New and lesser known Dorvilleidae (Annelida, Polychaeta) from Scandinavian and northeast American waters. *Sarsia*, 63, 285–303.
- Paavo, B., Bailey-Brock, J.H. & Åkesson, B. (2000) Morphology and life history of *Ophryotrocha adherens* sp. nov. (Polychaeta, Dorvilleidae). *Sarsia*, 85, 251–264.
- Palumbi, S.R. (1996) Nucleic acids II: the polymerase chain reaction. *Molecular Systematics*, 2, 205–247.
- Paxton, H. (2009) A new species of *Palpiphitime* (Annelida: Dorvilleidae) from Western Canada. *Proceedings of the Biological Society of Washington*, 122, 26–31.
<http://dx.doi.org/10.2988/08-33.1>
- Paxton, H. & Åkesson, B. (2010) The *Ophryotrocha labronica* group (Annelida: Dorvilleidae) with the description of seven new species. *Zootaxa*, 2713, 1–24.
- Paxton, H. & Åkesson, B. (2011) The *Ophryotrocha diadema* group (Annelida: Dorvilleidae), with the description of two new species. *Zootaxa*, 3092, 43–59.
- Paxton, H. & Davey, A. (2010) A new species of *Ophryotrocha* (Annelida: Dorvilleidae) associated with fish farming at Macquarie Harbour, Tasmania, Australia. *Zootaxa*, 2509, 53–61.
- Paxton, H. & Morineaux, M. (2009) Three species of Dorvilleidae (Annelida: Polychaeta) associated with Atlantic deep-sea reducing habitats, with the description of *Ophryotrocha fabriae*, new species. *Proceedings of the Biological Society of Washington*, 122, 14–25.
<http://dx.doi.org/10.2988/08-22.1>
- Pearson, T.H. & Rosenberg, R. (1978) Macrobenthic succession in relation to organic enrichment and pollution of the marine environment. *Oceanography and Marine Biology: an Annual Review*, 16, 229–311.
- Pfannenstiel, H.-D. (1972) Eine neue *Ophryotrocha*-Art (Polychaeta, Eunicidae) aus Japan. *Helgoländer Wissenschaftliche Meeresuntersuchungen*, 23, 117–124.
<http://dx.doi.org/10.1007/bf01616313>
- Prevedelli, D., Massamba N'Siala, G. & Simonini, R. (2005) The seasonal dynamics of six species of Dorvilleidae (Polychaeta) in the harbour of La Spezia (Italy). *Marine Ecology*, 26, 286–293.
<http://dx.doi.org/10.1111/j.1439-0485.2005.00067.x>
- Ronquist, F. & Huelsenbeck, J.P. (2003) MrBayes 3: Bayesian phylogenetic inference under mixed models. *Bioinformatics*, 19, 1572–1574.
<http://dx.doi.org/10.1093/bioinformatics/btg180>
- Sahling, H., Rickert, D., Lee, R.W., Linke, P. & Suess, E. (2002) Macrofaunal community structure and sulfide flux at gas hydrate deposits from the Cascadia convergent margin, NE Pacific. *Marine Ecology Progress Series*, 231, 121–138.
<http://dx.doi.org/10.3354/meps231121>
- Saravanakumar, C., Dineshkumar, N., Alavandi, S.V., Salman, V., Poornima, M. & Kalaimani, N. (2012) Enrichment and identification of large filamentous sulfur bacteria related to *Beggiatoa* species from brackishwater ecosystems of Tamil Nadu along the southeast coast of India. *Systematic and Applied Microbiology*, 35, 396–403.
<http://dx.doi.org/10.1016/j.syapm.2012.05.006>
- Sibuet, M. & Olu-Le Roy, K. (2003) Cold seep communities on continental margins: structure and quantitative distribution relative to geological and fluid venting patterns. In: Wefer, G., Billett, D., Hebbeln, D., Jorgensen, B.B., Schlüter, M. & van Weering, T.C.E. (Ed.), *Ocean Margin Systems*, Springer, Berlin Heidelberg, pp. 235–251.
<http://dx.doi.org/10.1007/978-3-662-05127-6>

- Smith, C.R. & Baco, A.R. (2003) Ecology of whale falls at the deep-sea floor. *Oceanography and Marine Biology*, 41, 311–354.
- Taboada, S., Wiklund, H., Glover, A.G., Dahlgren, T.G., Cristobo, J. & Avila, C. (2013) Two new Antarctic *Ophryotrocha* (Annelida: Dorvilleidae) described from shallow-water whale bones. *Polar Biology*, 36 (7) 1031–1045.
<http://dx.doi.org/10.1007/s00300-013-1326-4>
- Thornhill, D.J., Struck, T.H., Ebbe, B., Lee, R.W., Mendoza, G.F., Levin, L.A. & Halanych, K.M. (2012) Adaptive radiation in extremophilic Dorvilleidae (Annelida): diversification of a single colonizer or multiple independent lineages? *Ecology and Evolution*, 2, 1958–1970.
<http://dx.doi.org/10.1002/ece3.314>
- Thurber, A.R., Kröger, K., Neira, C., Wiklund, H. & Levin, L.A. (2010) Stable isotope signatures and methane use by New Zealand cold seep benthos. *Marine Geology*, 272, 260–269.
<http://dx.doi.org/10.1016/j.margeo.2009.06.001>
- Thurber, A.R., Levin, L.A., Orphan, V.J. & Marlow, J.J. (2012) Archaea in metazoan diets: implications for food webs and biogeochemical cycling. *The ISME journal*, 6, 1602–1612.
<http://dx.doi.org/10.1038/ismej.2012.16>
- Weiss, V.S. & Hilbig, B. (1992) Redescription of *Ophryotrocha platykephale* Blake (Polychaeta, Dorvilleidae) from the Guaymas Basin hydrothermal vents. *Bulletin of the Southern California Academy of Science*, 91, 92–96.
- Wiklund, H., Glover, A.G. & Dahlgren, T.G. (2009) Three new species of *Ophryotrocha* (Annelida: Dorvilleidae) from a whale-fall in the North-East Atlantic. *Zootaxa*, 2228, 43–56.
- Wiklund, H., Altamira, I.V., Glover, A.G., Smith, C.R., Baco, A.R. & Dahlgren, T.G. (2012) Systematics and biodiversity of *Ophryotrocha* (Annelida, Dorvilleidae) with descriptions of six new species from deep-sea whale-fall and wood-fall habitats in the north-east Pacific. *Systematics and Biodiversity*, 10, 243–259.
<http://dx.doi.org/10.1080/14772000.2012.693970>