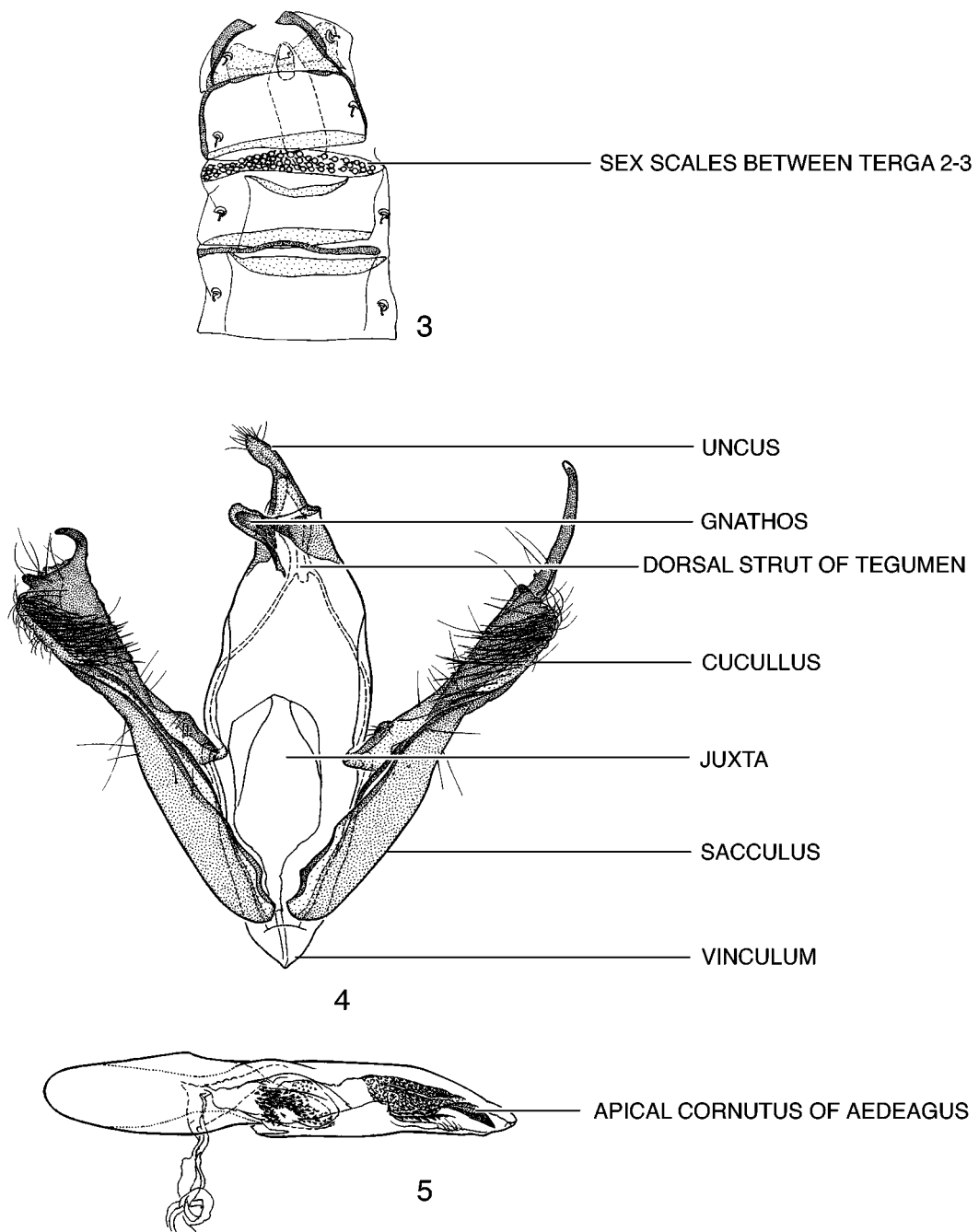
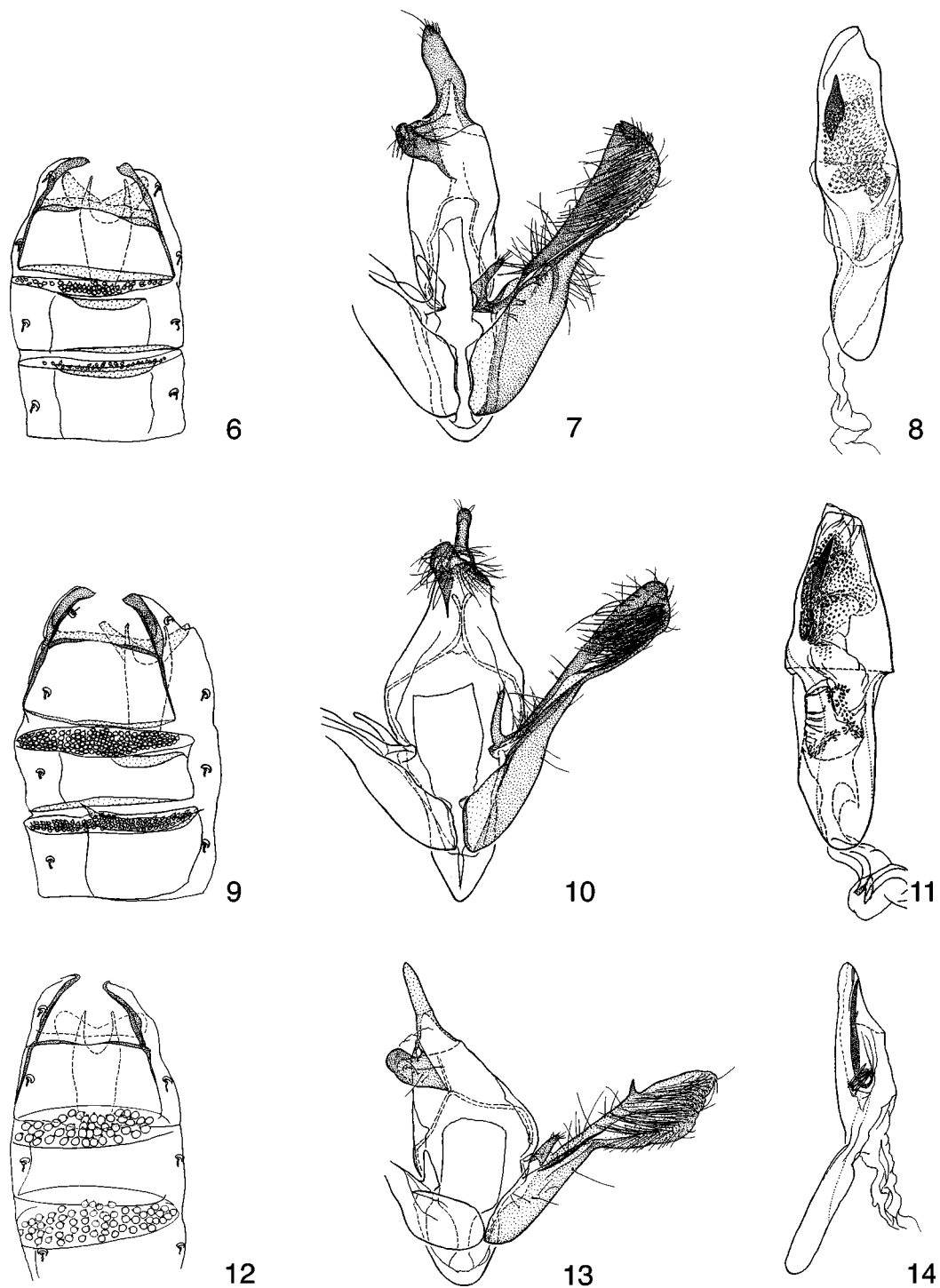


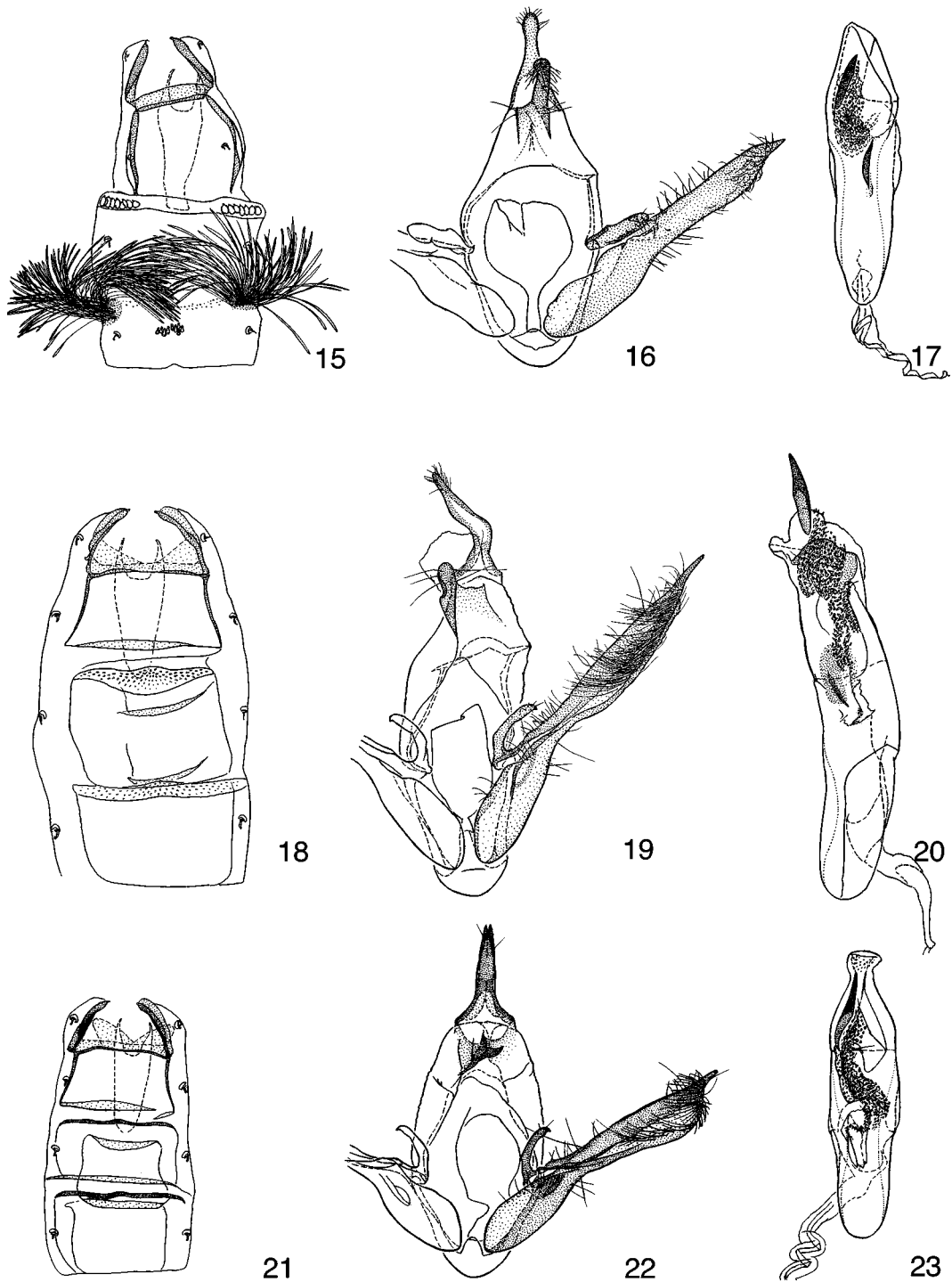
FIGURES 1–2. Wing venation and head of *Glyphidocera*. Fig. 1, Wing venation of *G. vappae*. Fig. 2. Lateral view of head of *G. rodriguezi*. Fig. 2a, Lateral view of labial palpus of *G. operae*.



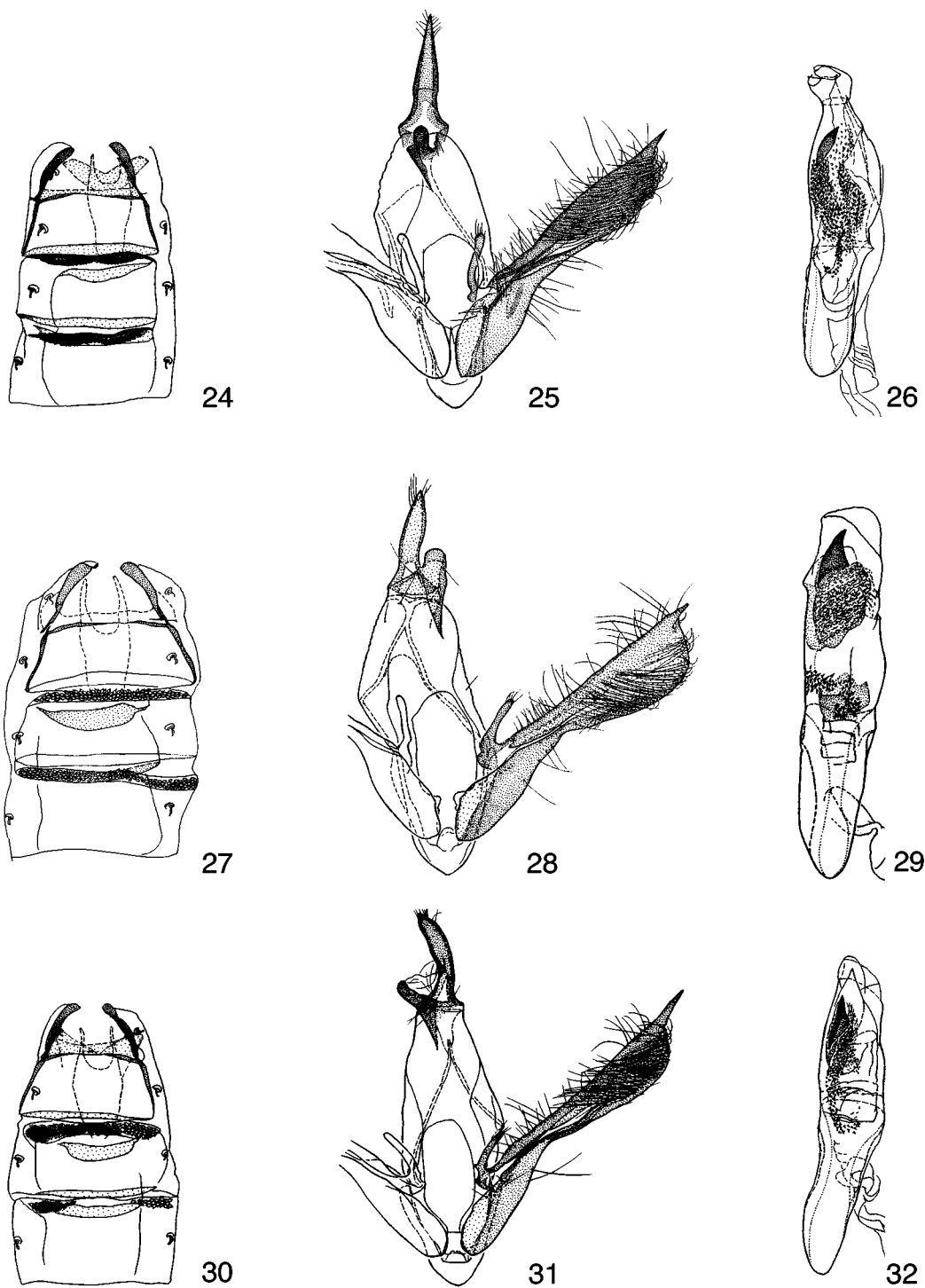
FIGURES 3–5. Abdomen and genitalia of male *Glyphidocera asymmetricae*. Fig. 3, Dorsum of segments 1–4 showing sex scales between terga 2–3. Figs. 4–5, Genital capsule and aedeagus.



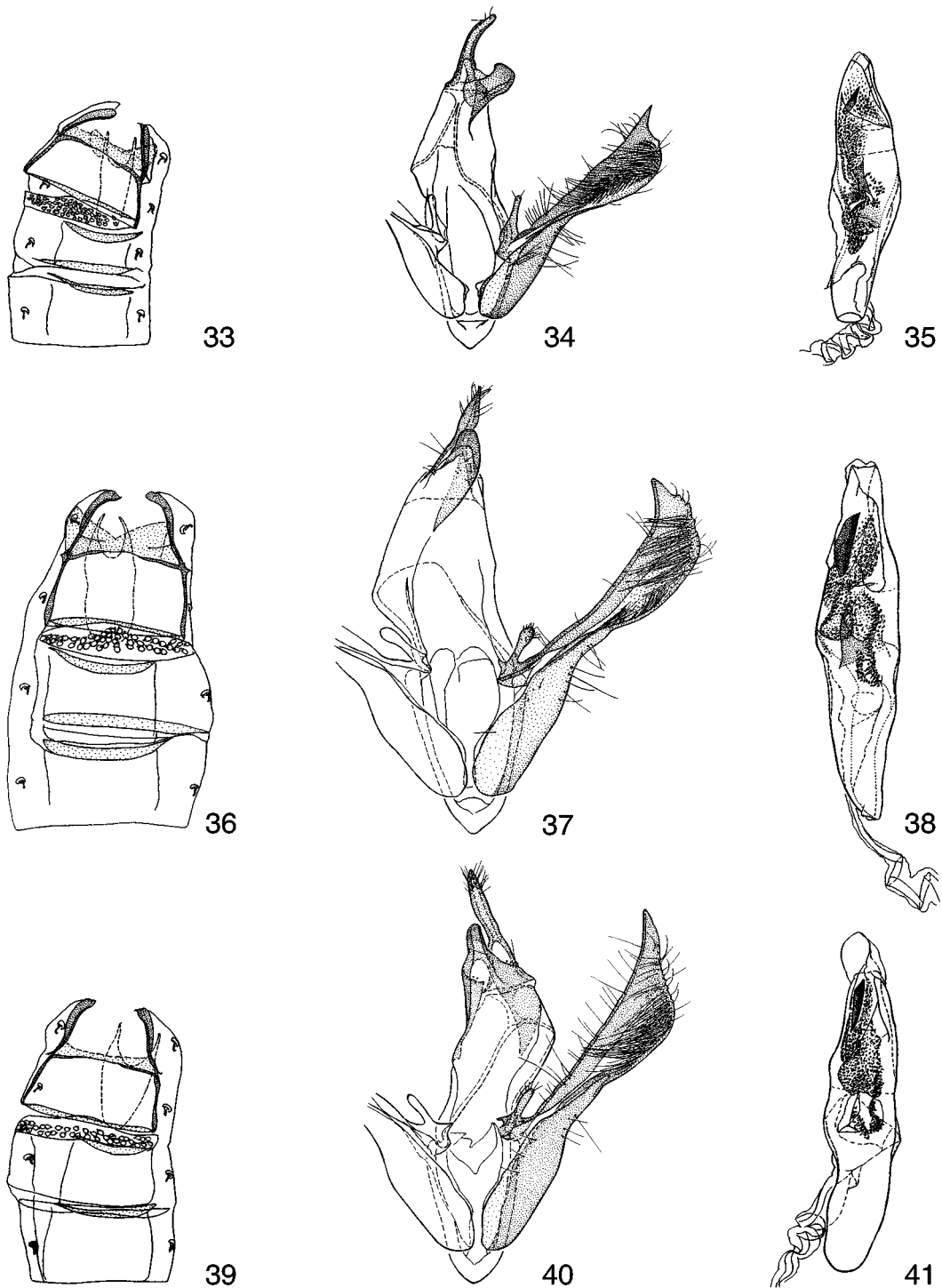
FIGURES 6–14. Abdomen and genitalia of male *Glyphidocera*. Figs. 6–8, *G. ferae*. Figs. 9–11, *G. nubis*. Figs. 12–14, *G. paenulae*.



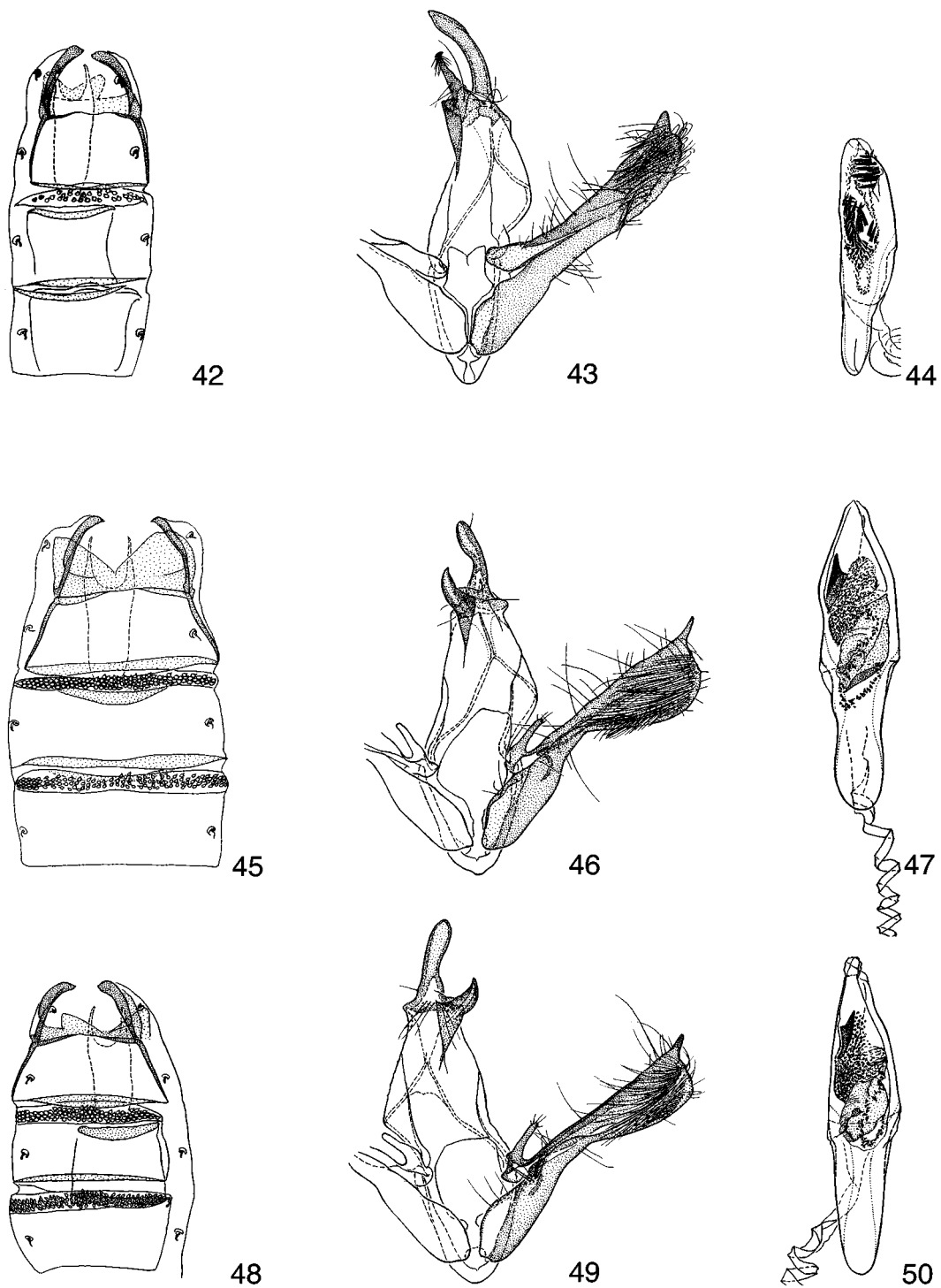
FIGURES 15–23. Abdomen and genitalia of male *Glyphidocera*. Figs. 15–17, *G. arakawae*. Figs. 18–20, *G. operae*. Figs. 21–23, *G. advenae*.



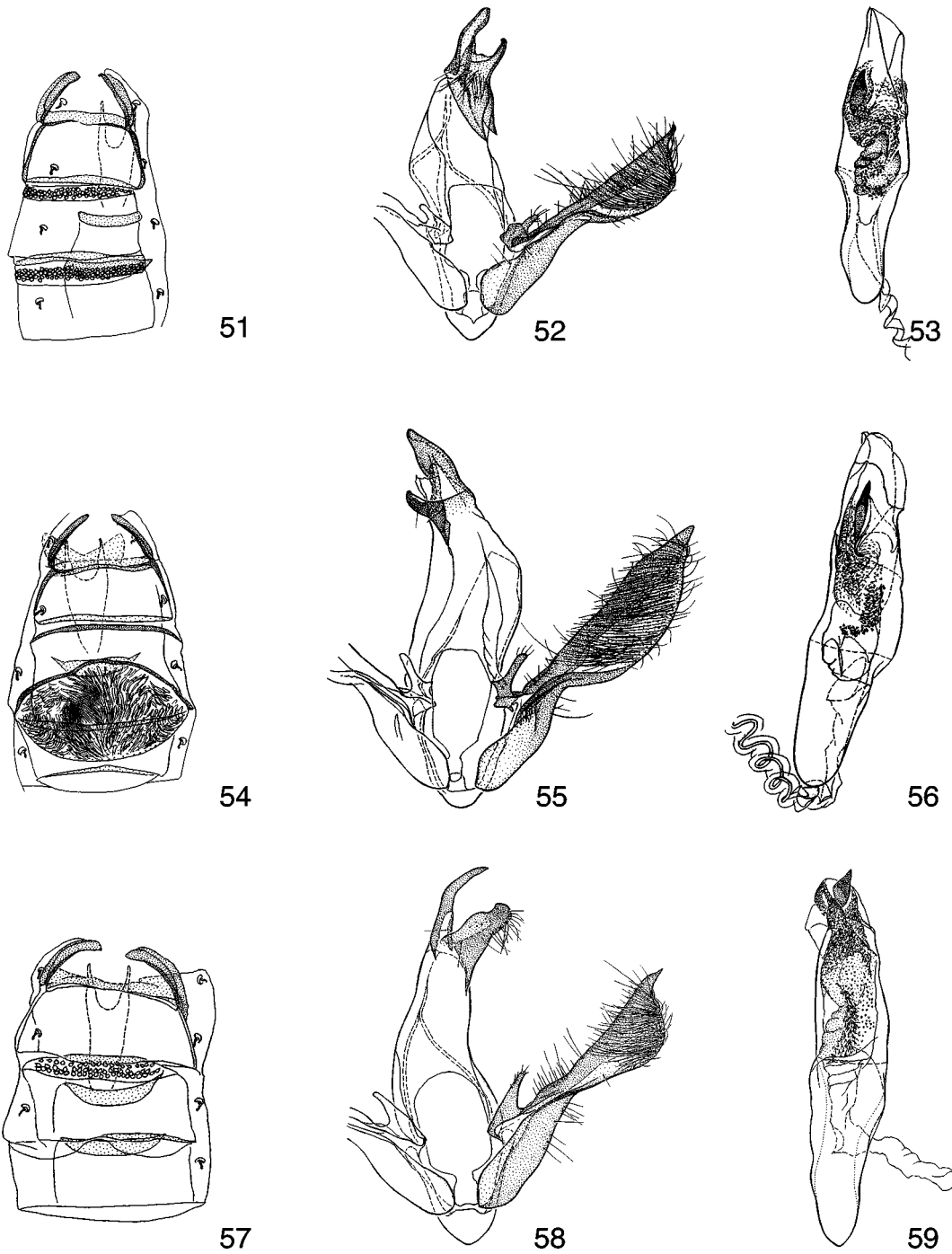
FIGURES 24–32. Abdomen and genitalia of male *Glyphidocera*. Figs. 24–26, *G. orae*. Figs. 27–29, *G. aedis*. Figs. 30–32, *G. gemmae*.



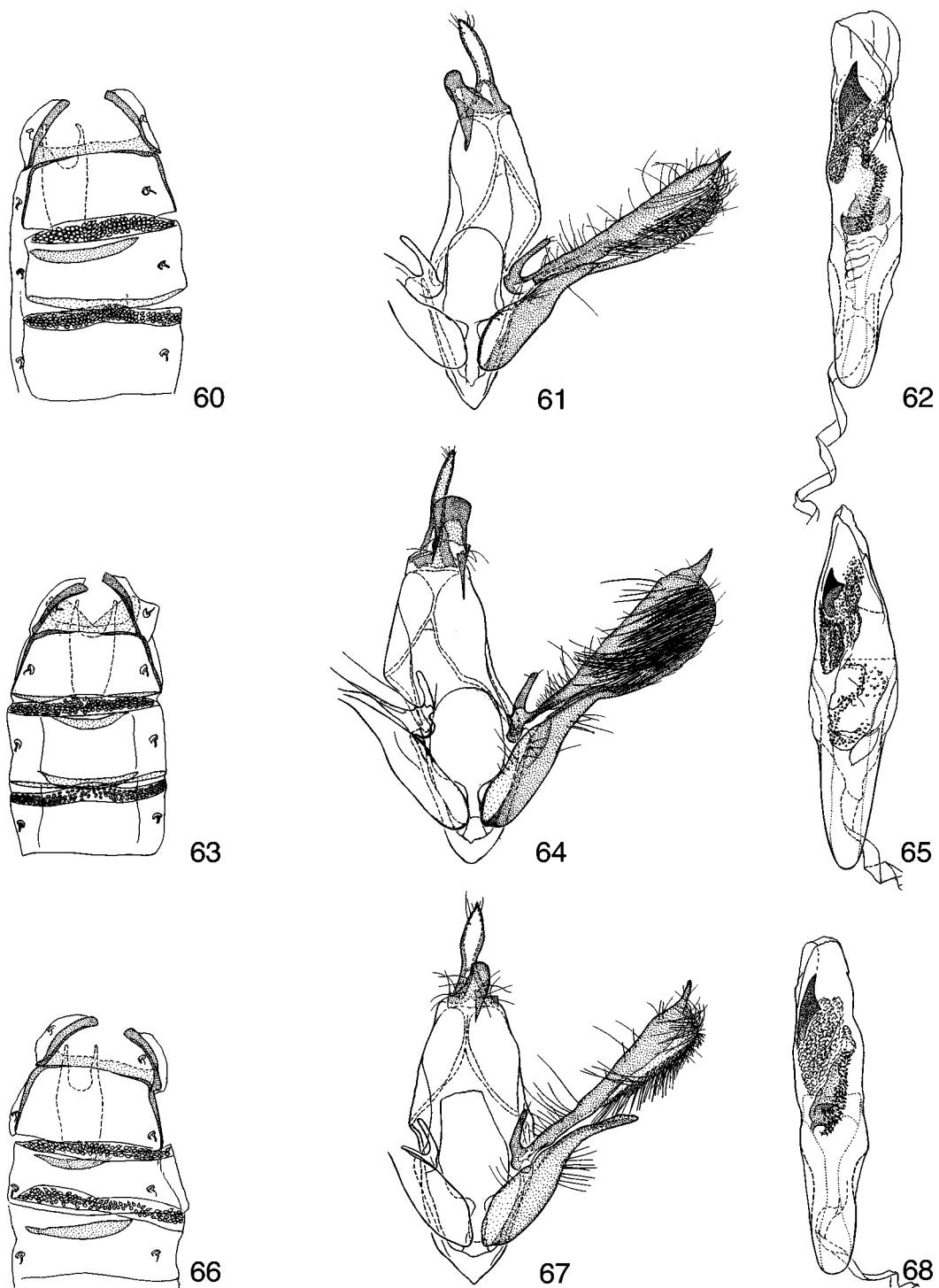
FIGURES 33–41. Abdomen and genitalia of male *Glyphidocera*. Figs. 33–35, *G. ollae*. Figs. 36–38, *G. corniculatae*. Figs. 39–41, *G. terrae*.



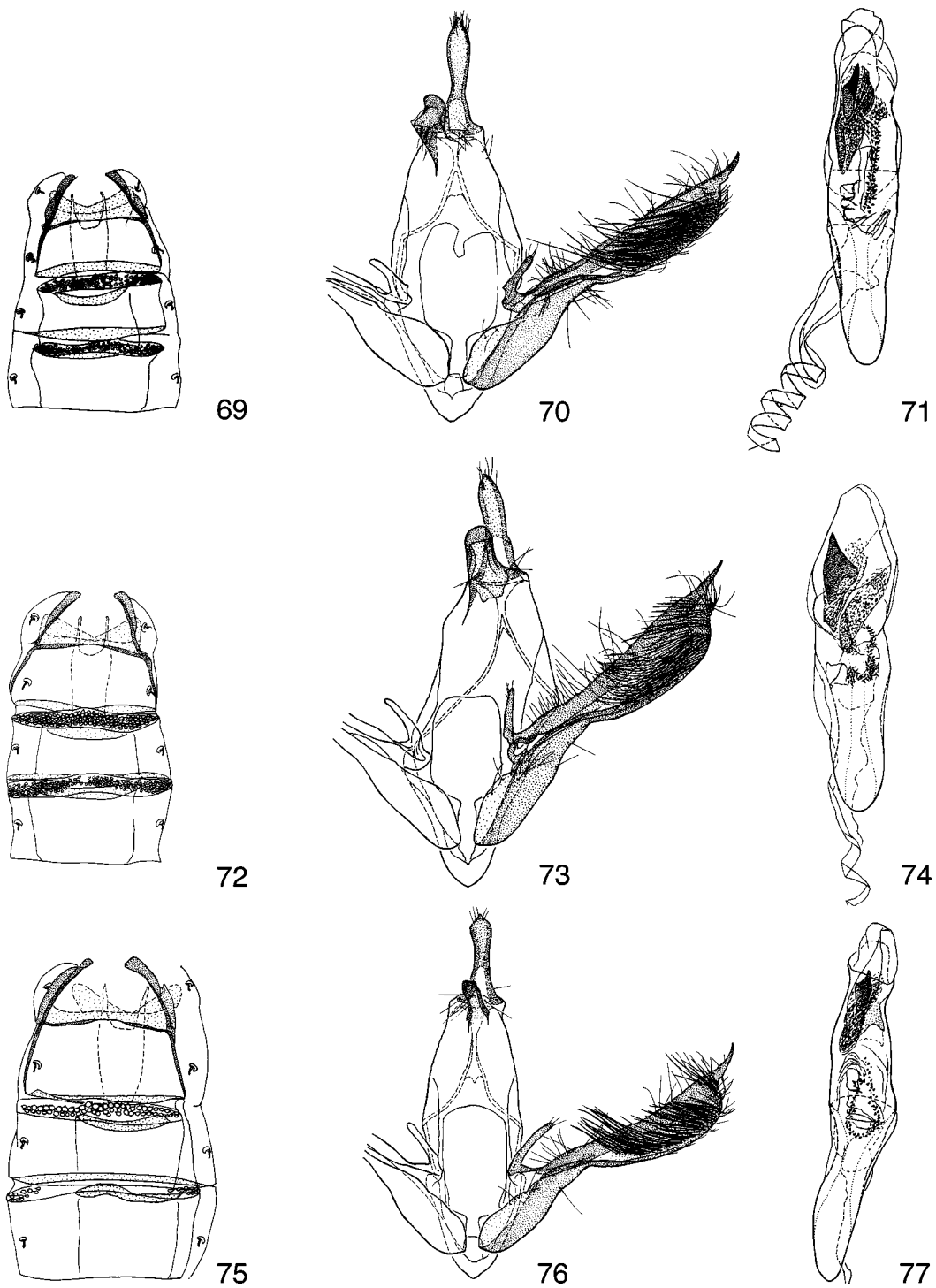
FIGURES 42–50. Abdomen and genitalia of male *Glyphidocera*. Figs. 42–44, *G. cellae*. Figs. 45–47, *G. adrogantiae*. Figs. 48–50, *G. faecis*.



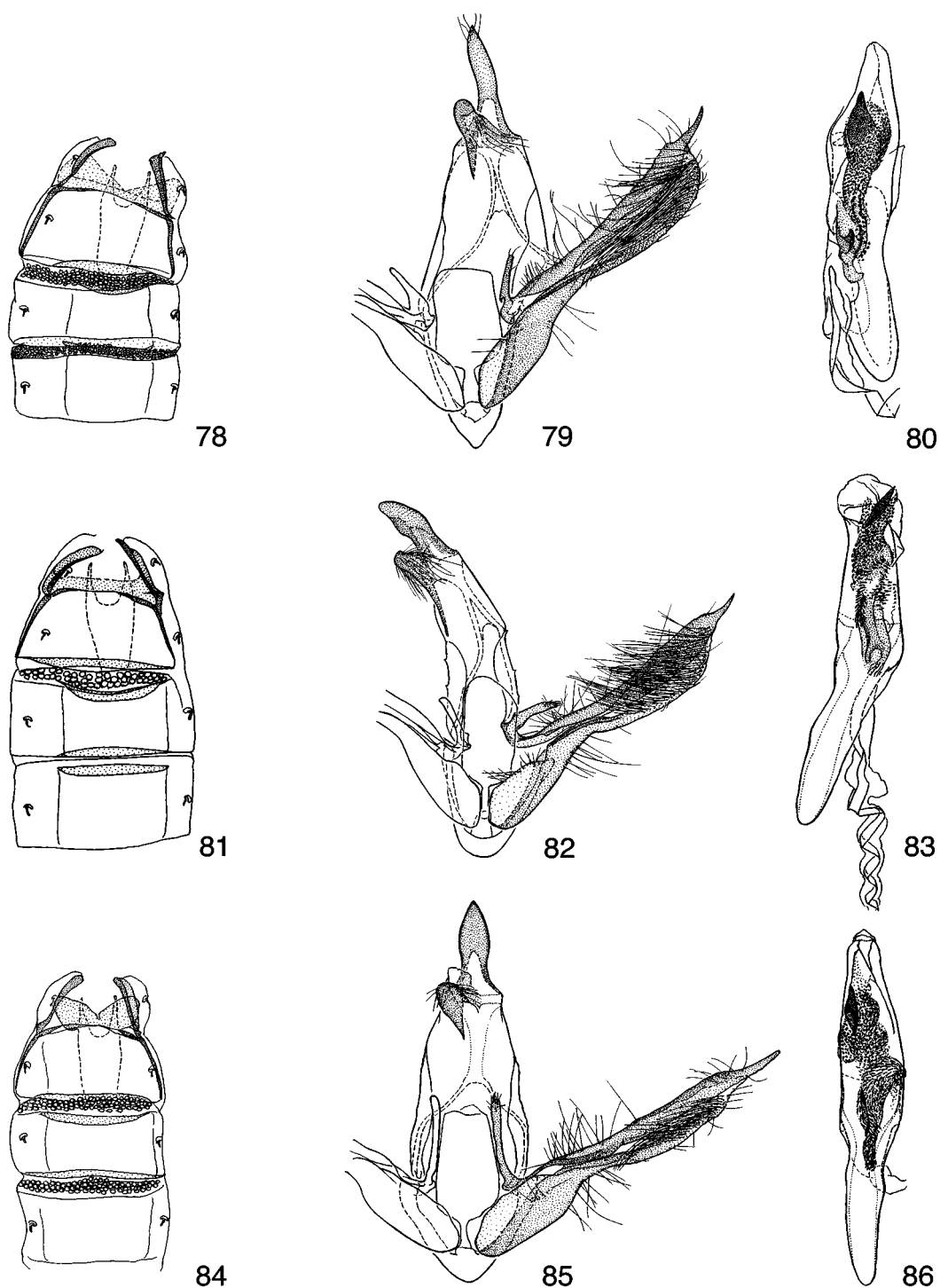
FIGURES 51–59. Abdomen and genitalia of male *Glyphidocera*. Figs. 51–53, *G. aediculae*. Figs. 54–56, *G. cerula*. Figs. 57–59, *G. raedae*.



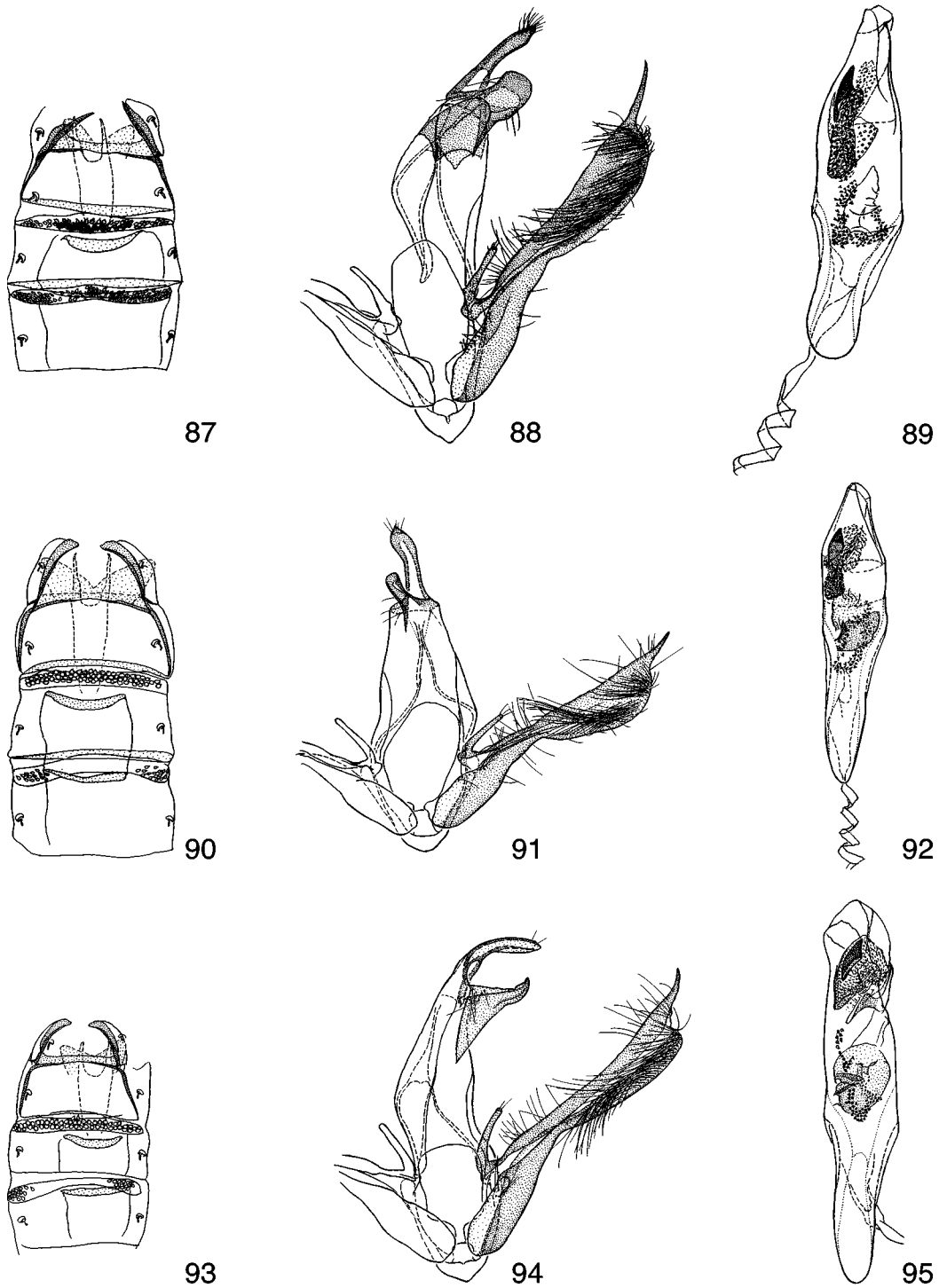
FIGURES 60–68. Abdomen and genitalia of male *Glyphidocera*. Figs. 60–62, *G. rodríguezi*. Figs. 63–65, *G. capsae*. Figs. 66–68, *G. audaciae*.



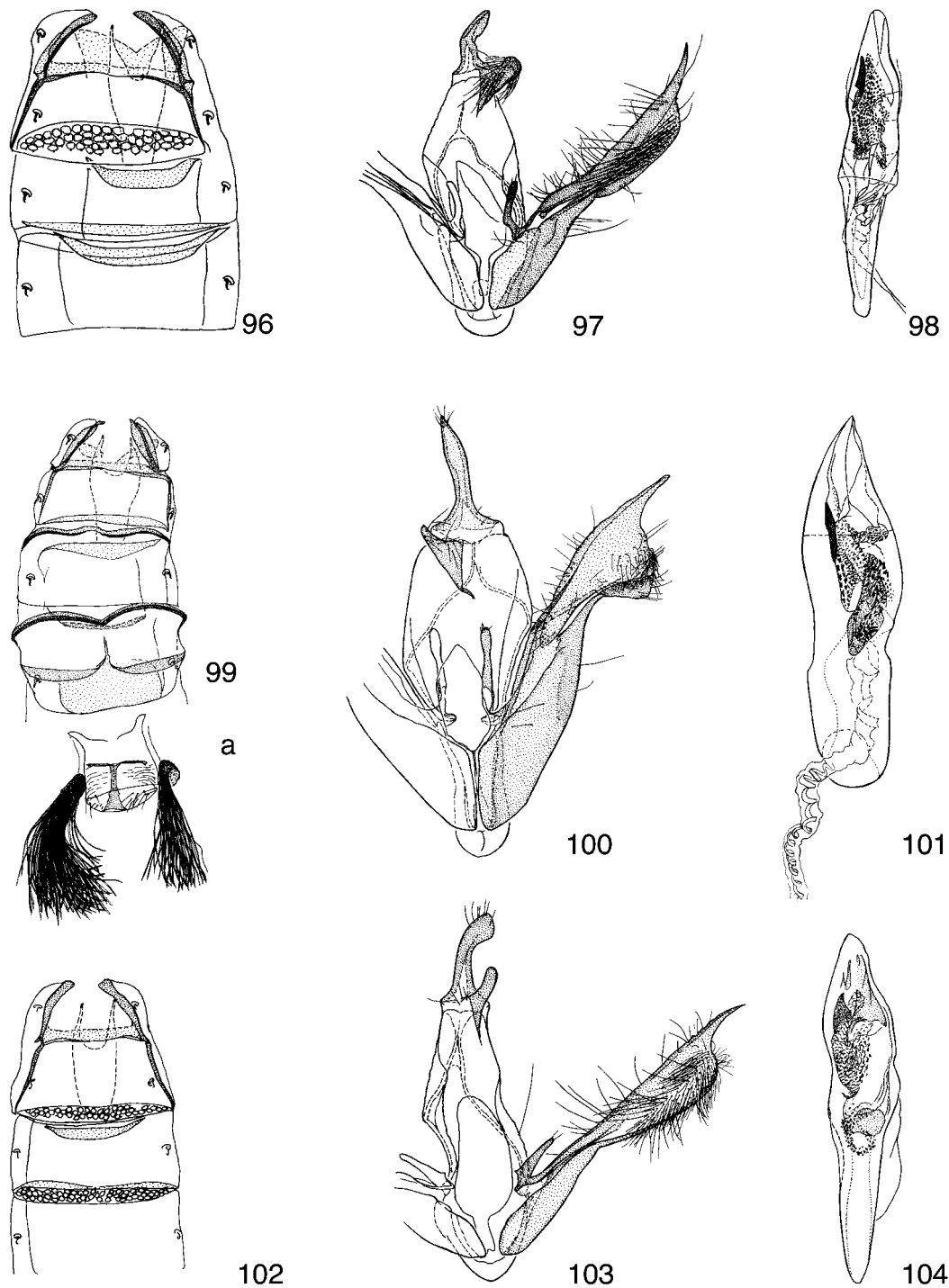
FIGURES 69–77. Abdomen and genitalia of male *Glyphidocera*. Figs.69–71, *G. coronae*. Figs. 72–74, *G. influae*. Figs. 75–77, *G. dictionis*.



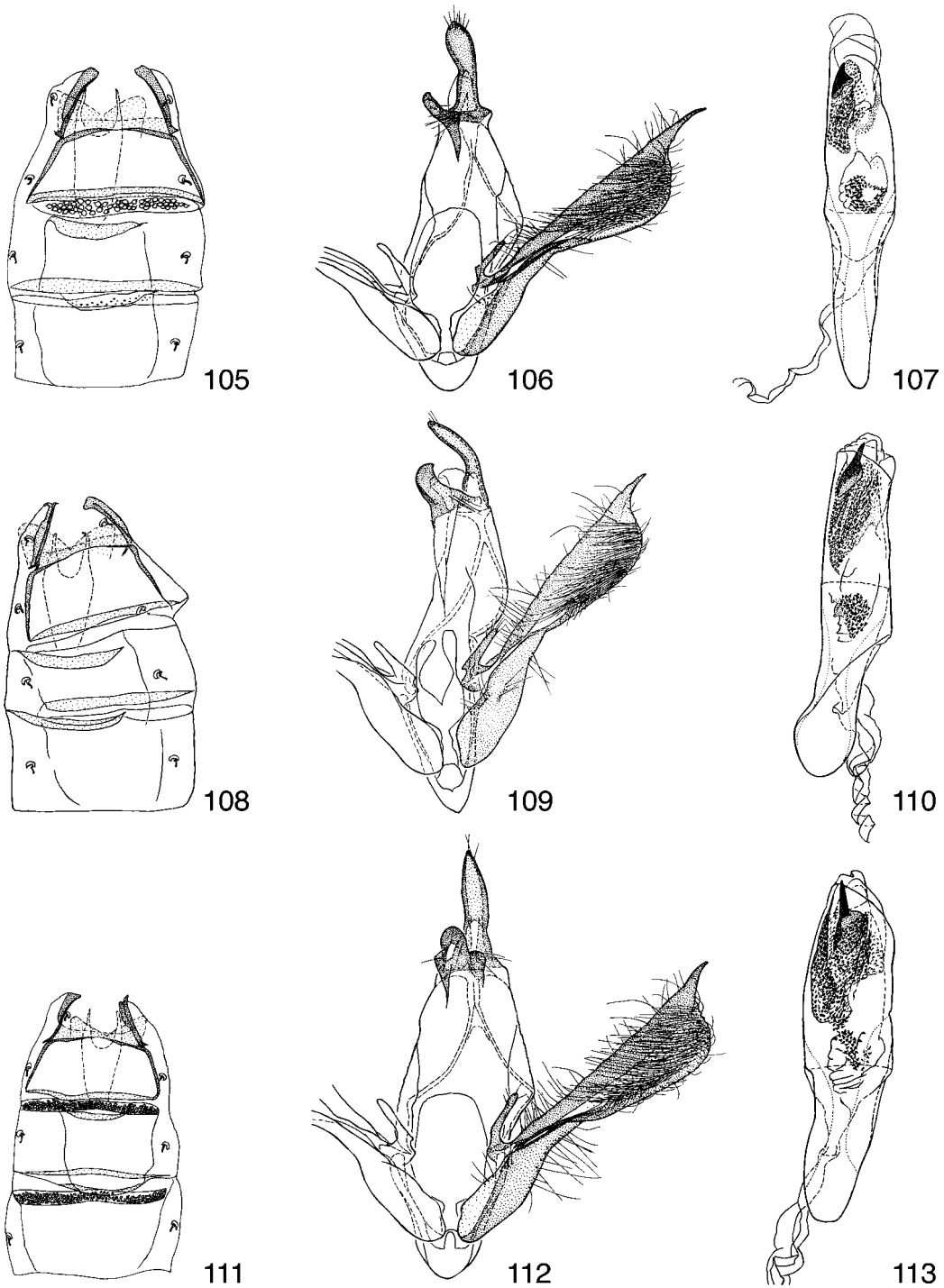
FIGURES 78–86. Abdomen and genitalia of male *Glyphidocera*. Figs. 78–80, *G. zothecuale*. Figs. 81–83, *G. arae*. Figs. 84–86, *G. cauponae*.



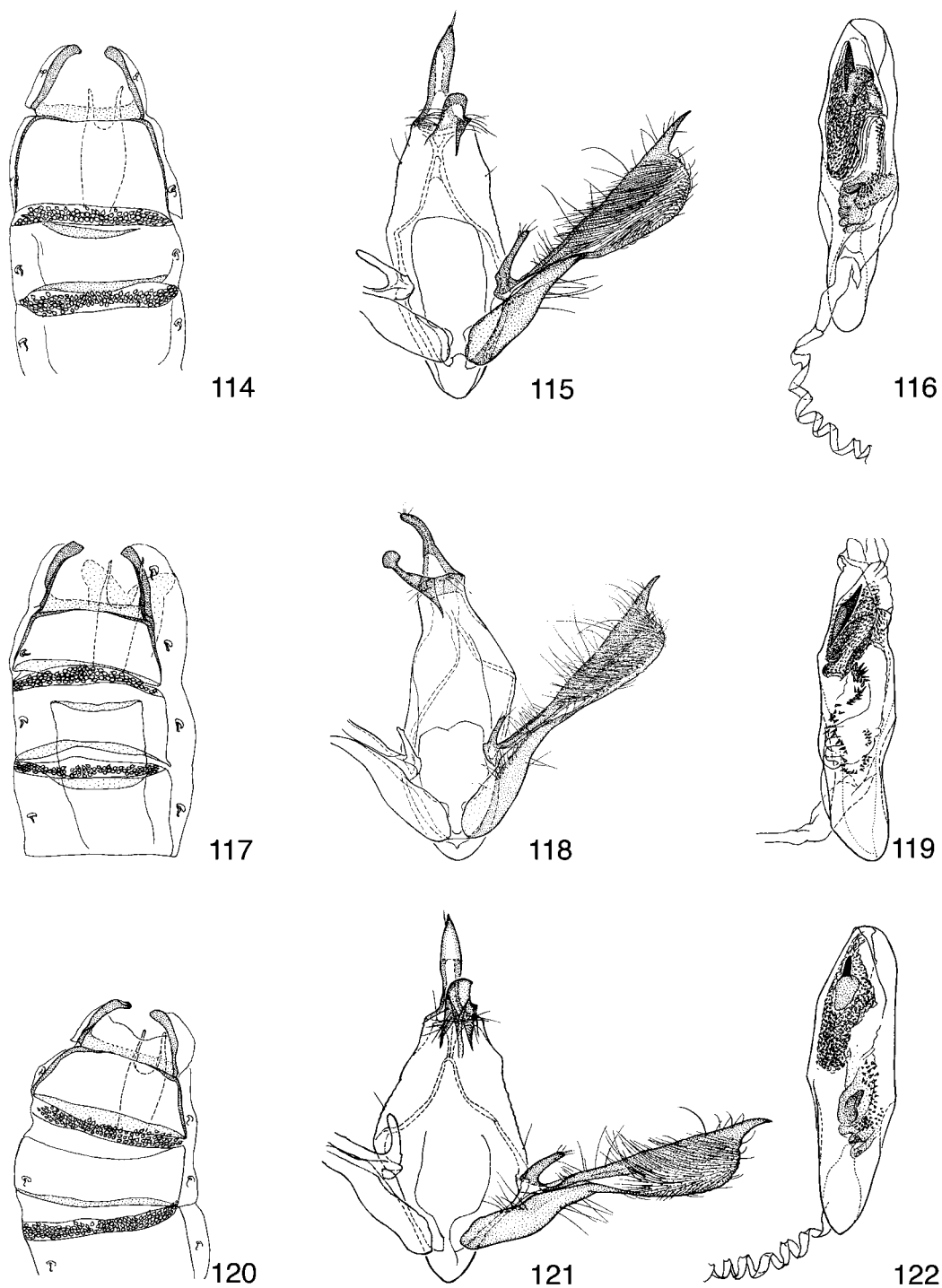
FIGURES 87–95. Abdomen and genitalia of male *Glyphidocera*. Figs. 87–89, *G. sardae*. Figs. 90–92, *G. eminentiae*. Figs. 93–95, *G. brumae*.



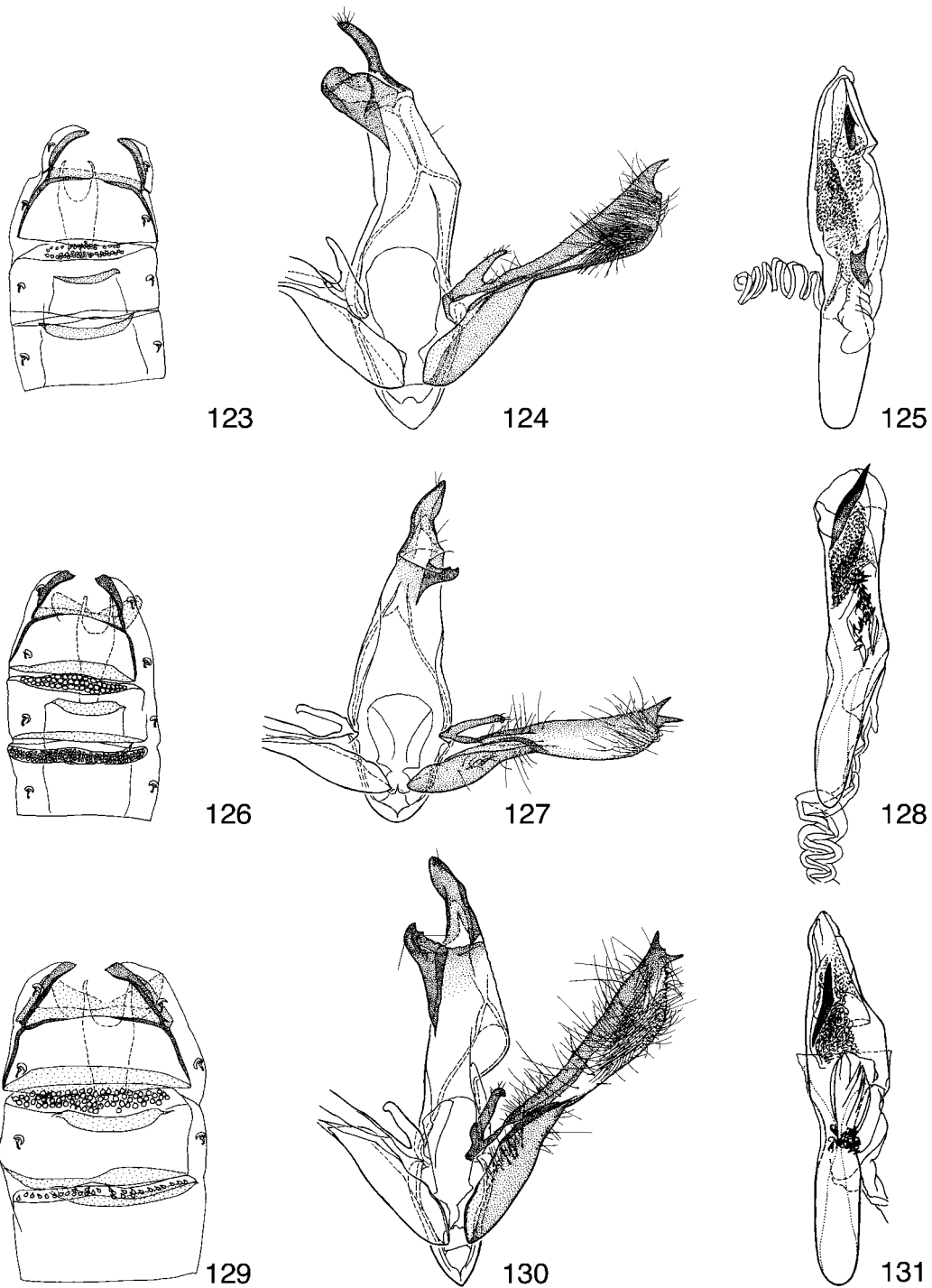
FIGURES 96–104. Abdomen and genitalia of male *Glyphidocera*. Figs. 96–98, *G. plebis*. Figs. 99–101, *G. lawrenceae*. Figs. 102–104, *G. lanae*.



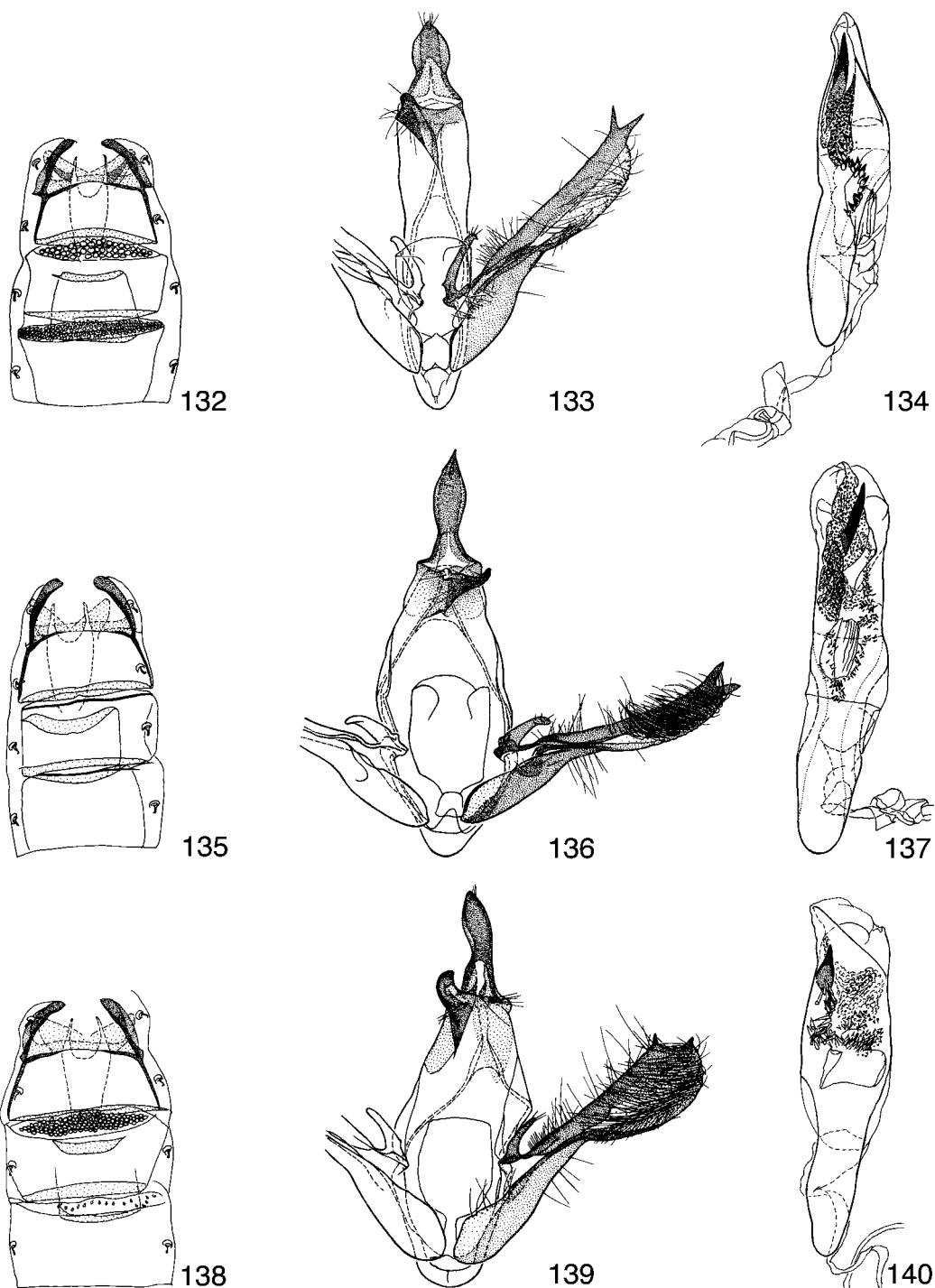
FIGURES 105–113. Abdomen and genitalia of male *Glyphidocera*. Figs. 105–107, *G. notae*. Figs. 108–110, *G. cenae*. Figs. 111–113, *G. minarum*.



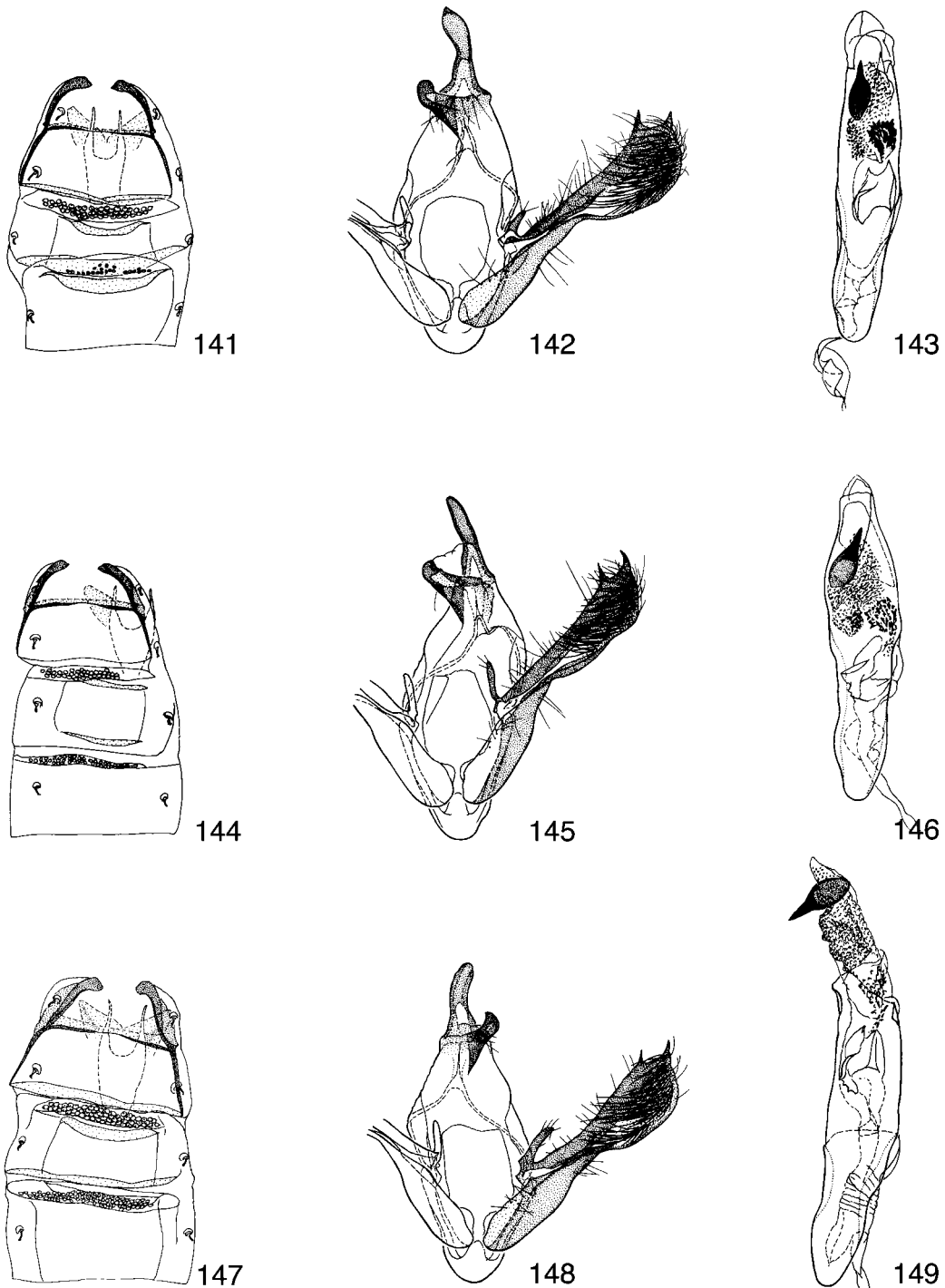
FIGURES 114–122. Abdomen and genitalia of male *Glyphidocera*. Figs. 114–116, *G. ciatae*. Figs. 117–119, *G. lupae*. Figs. 120–122, *G. plumae*.



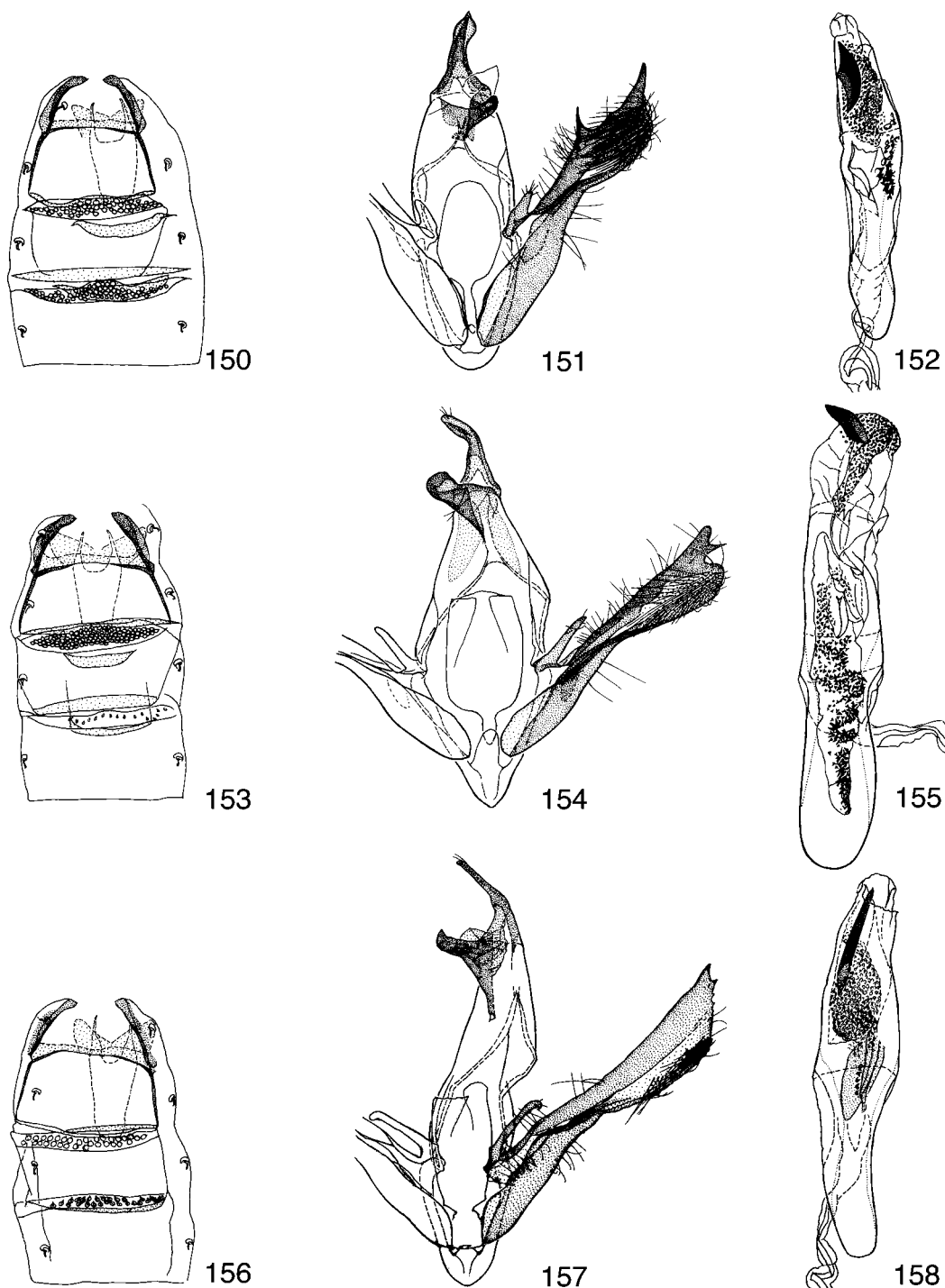
FIGURES 123–131. Abdomen and genitalia of male *Glyphidocera*. Figs. 123–125, *G. burpurae*. Figs. 126–128, *G. animae*. Figs. 129–131, *G. diciae*.



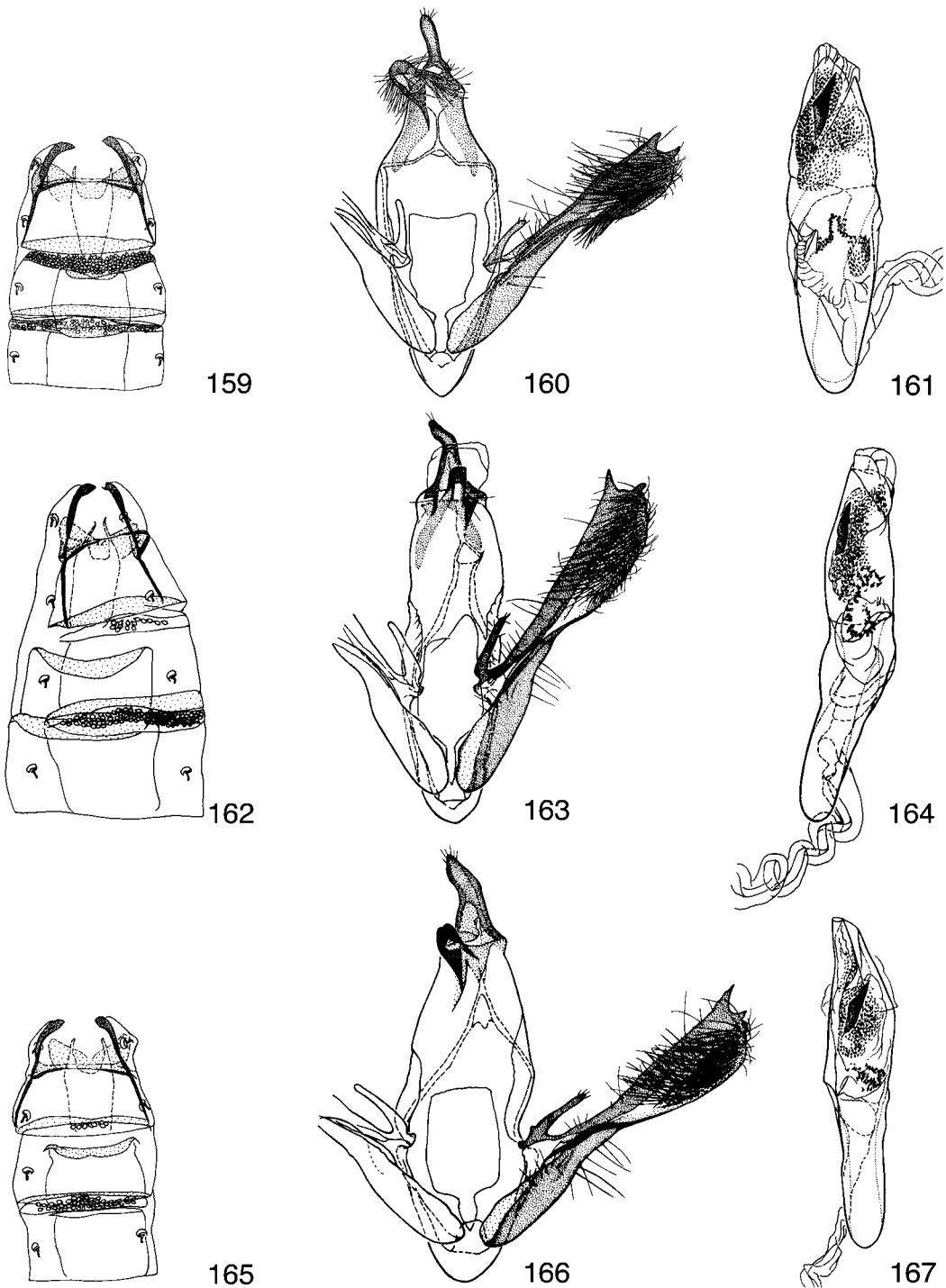
FIGURES 132–140. Abdomen and genitalia of male *Glyphidocera*. Figs. 132–134, *G. comae*. Figs. 135–137, *G. gazae*. Figs. 138–140, *G. virgulae*.



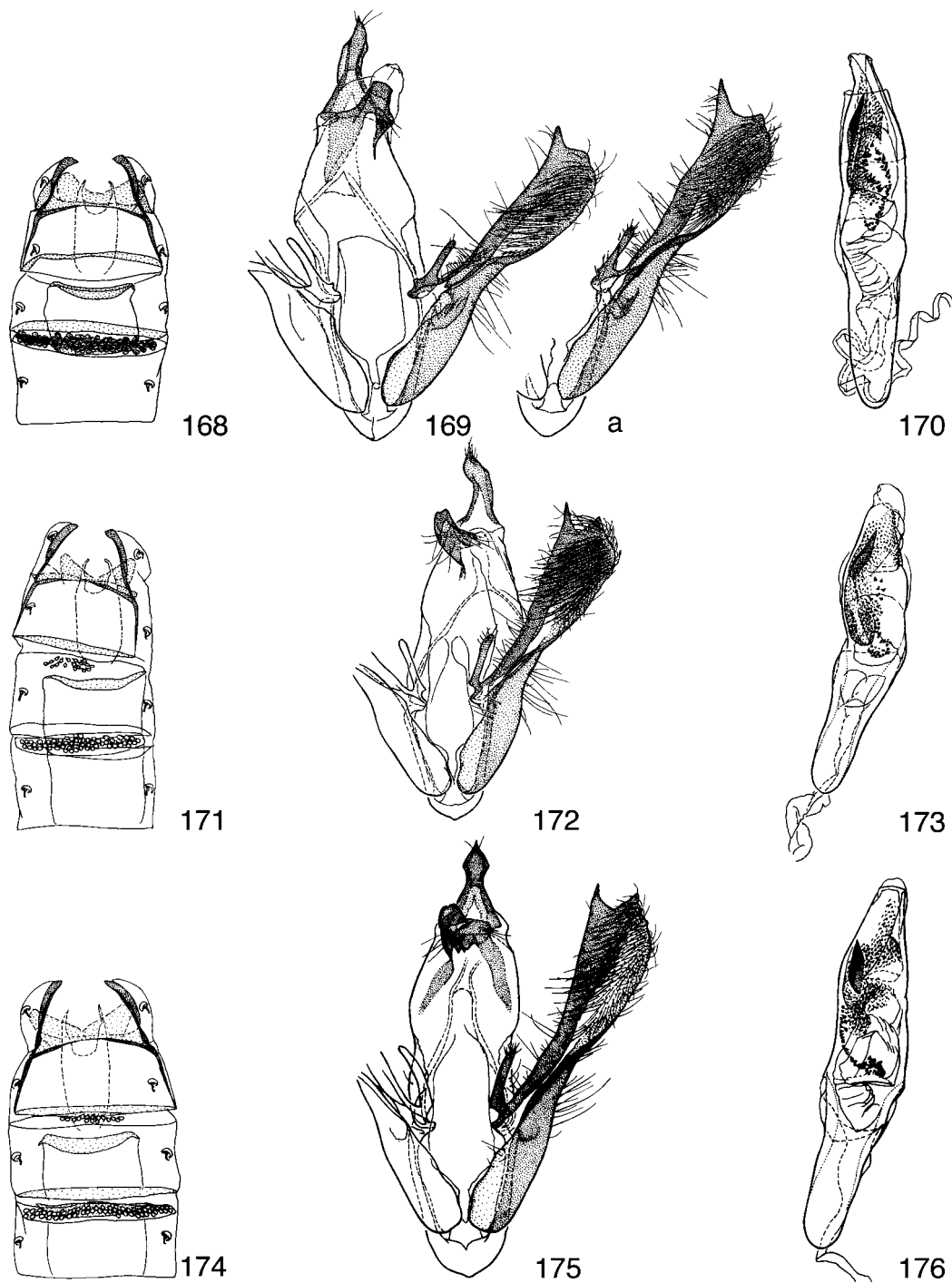
FIGURES 141–149. Abdomen and genitalia of male *Glyphidocera*. Figs. 141–143, *G. personae*. Figs. 144–146, *G. contionis*. Figs. 147–149, *G. umbrae*.



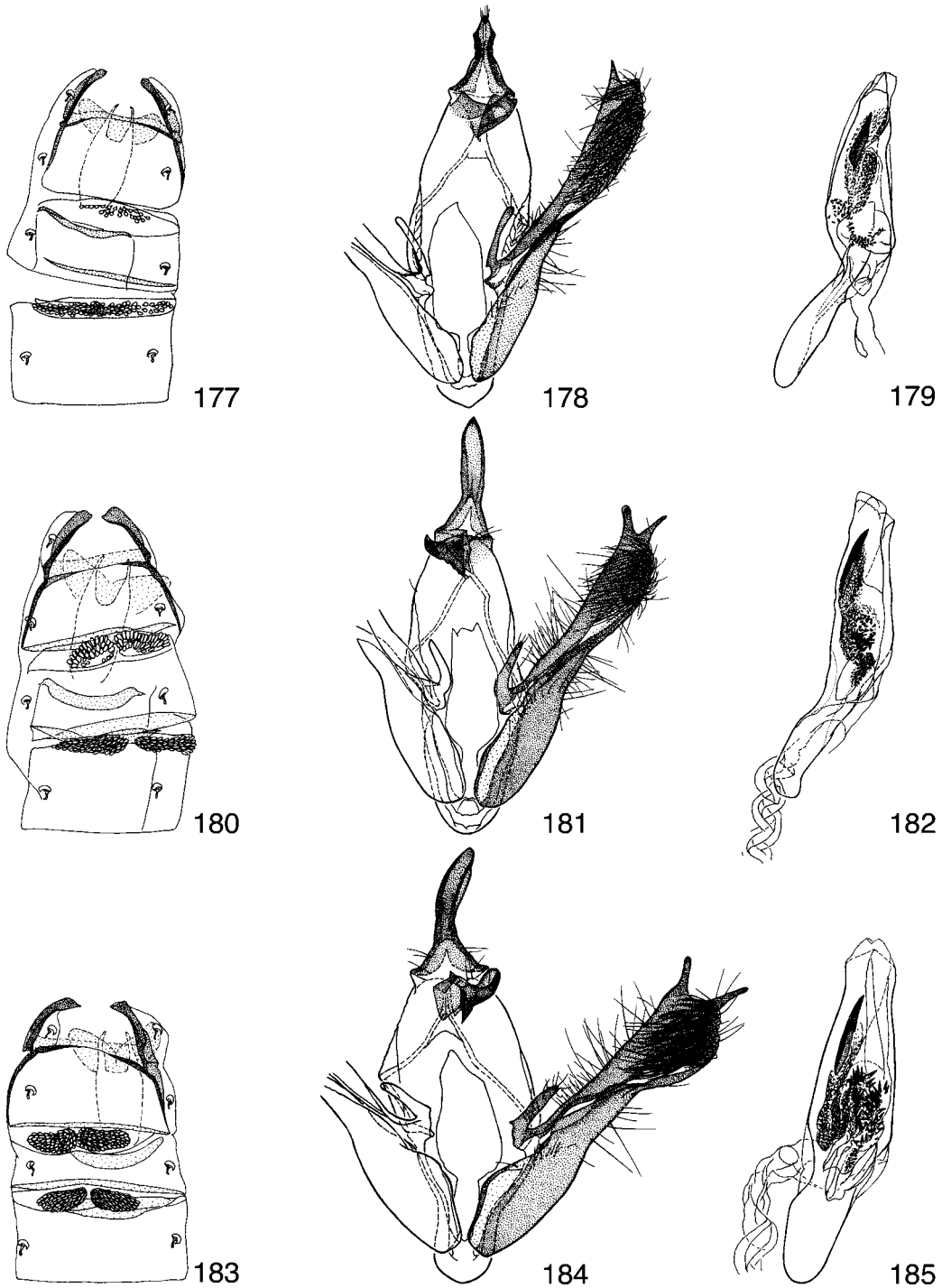
FIGURES 150–158. Abdomen and genitalia of male *Glyphidocera*. Figs. 150–152, *G. illiterata* Meyrick. Figs. 153–155, *G. olivae*. Figs. 156–158, *G. reginae*.



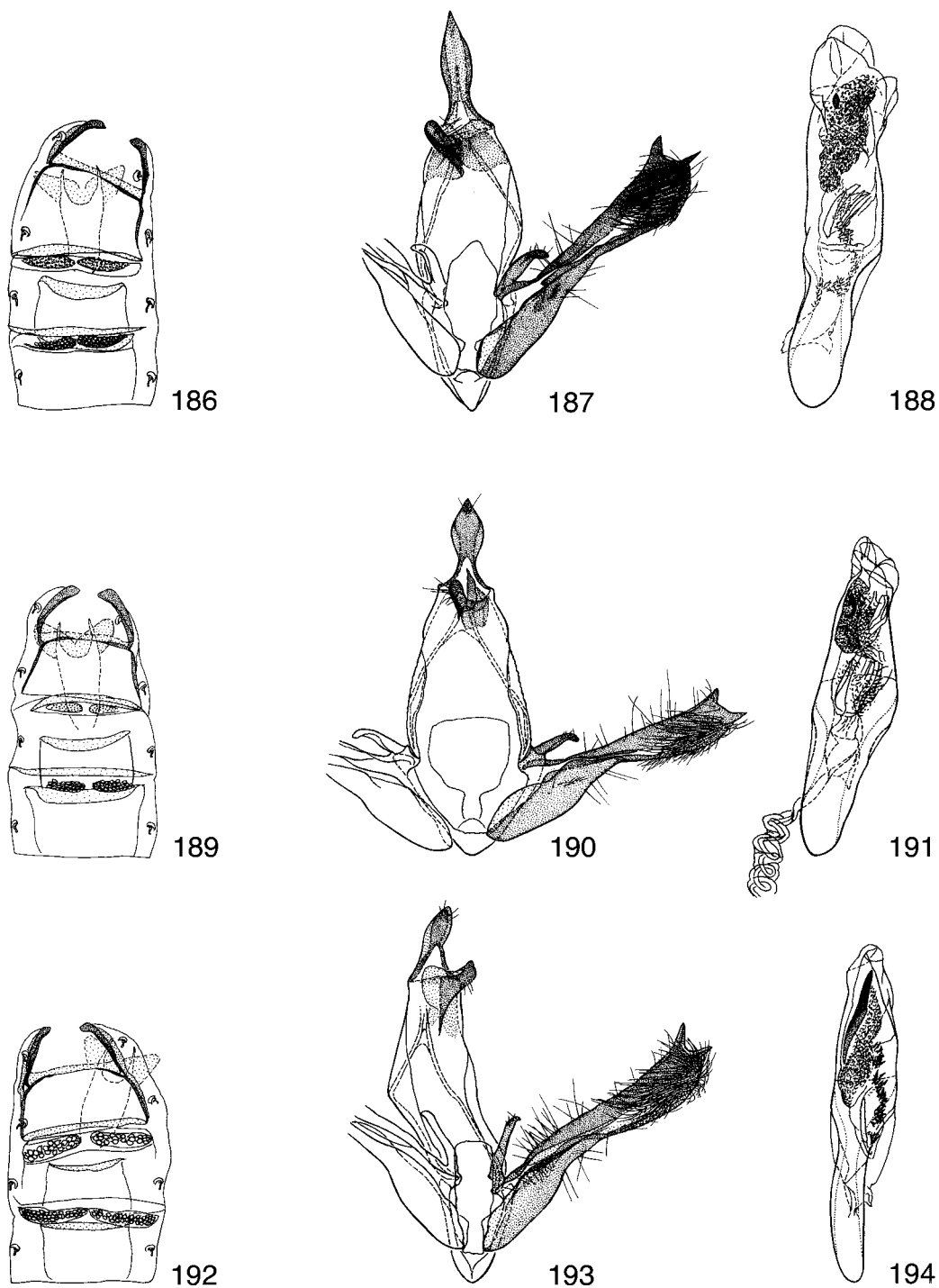
FIGURES 159–167. Abdomen and genitalia of male *Glyphidocera*. Figs. 159–161, *G. fidem*. Figs. 162–164, *G. pilae*. Figs. 165–167, *G. glaebae*.



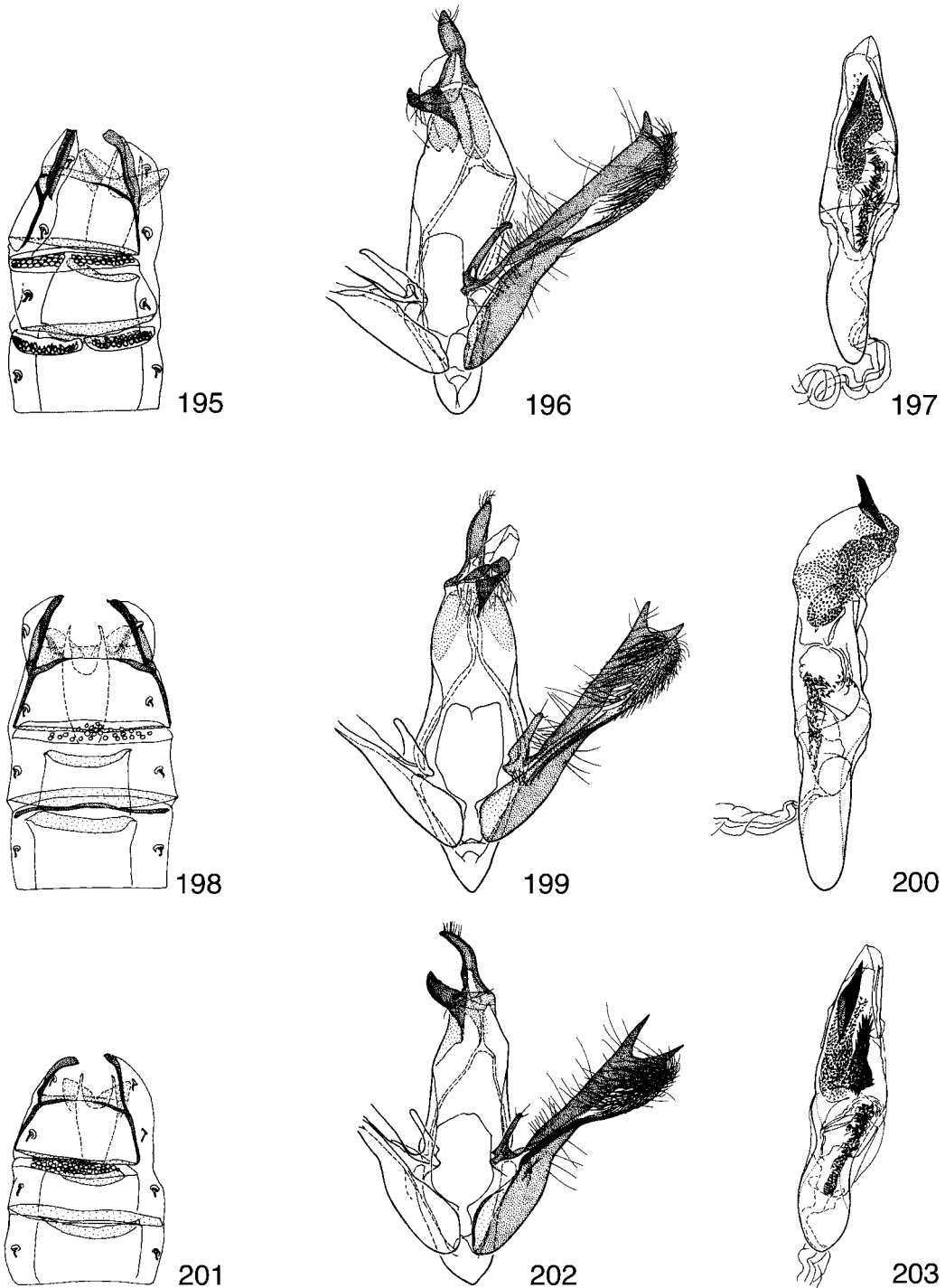
FIGURES 168–176. Abdomen and genitalia of male *Glyphidocera*. Figs. 168–170, *G. tibiae*. Figs. 171–173, *G. novercae*. Figs. 174–176, *G. caveae*.



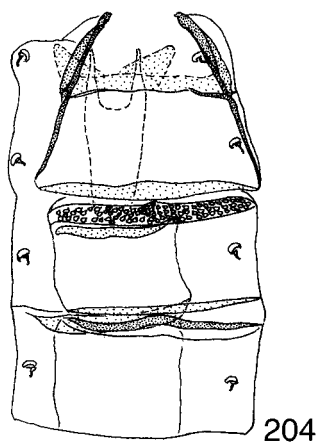
FIGURES 177–185. Abdomen and genitalia of male *Glyphidocera*. Figs. 177–179, *G. staerae*. Figs. 180–182, *G. amitae*. Figs. 183–185, *G. zamiae*.



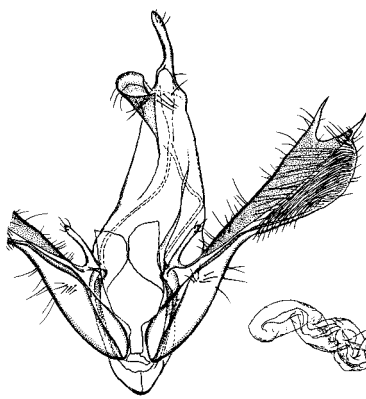
FIGURES 186–194. Abdomen and genitalia of male *Glyphidocera*. Figs. 186–188, *G. cenulae*. Figs. 189–191, *G. laricae*. Figs. 192–194, *G. barbae*.



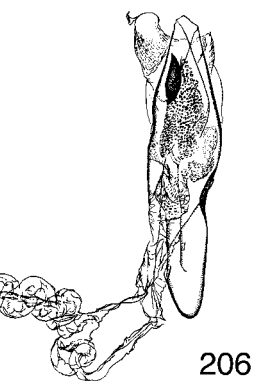
FIGURES 195–203. Abdomen and genitalia of male *Glyphidocera*. Figs. 195–197, *G. pali*. Figs. 198–200, *G. placentae*. Figs. 201–203, *G. formae*.



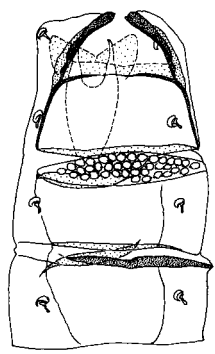
204



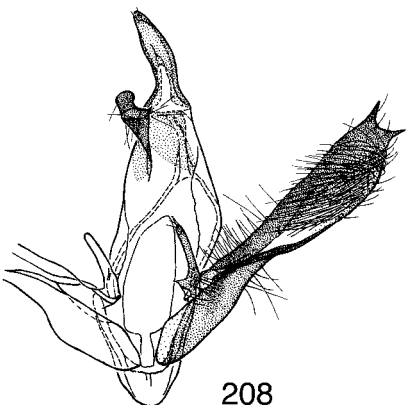
205



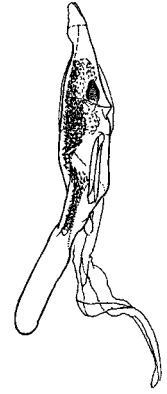
206



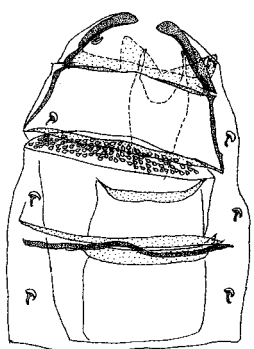
207



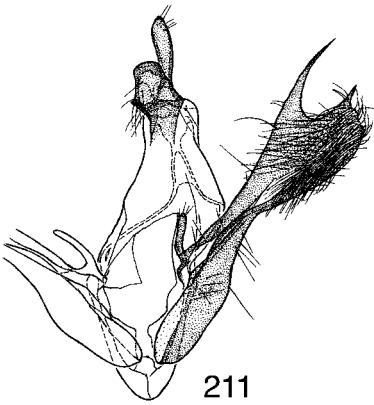
208



209



210

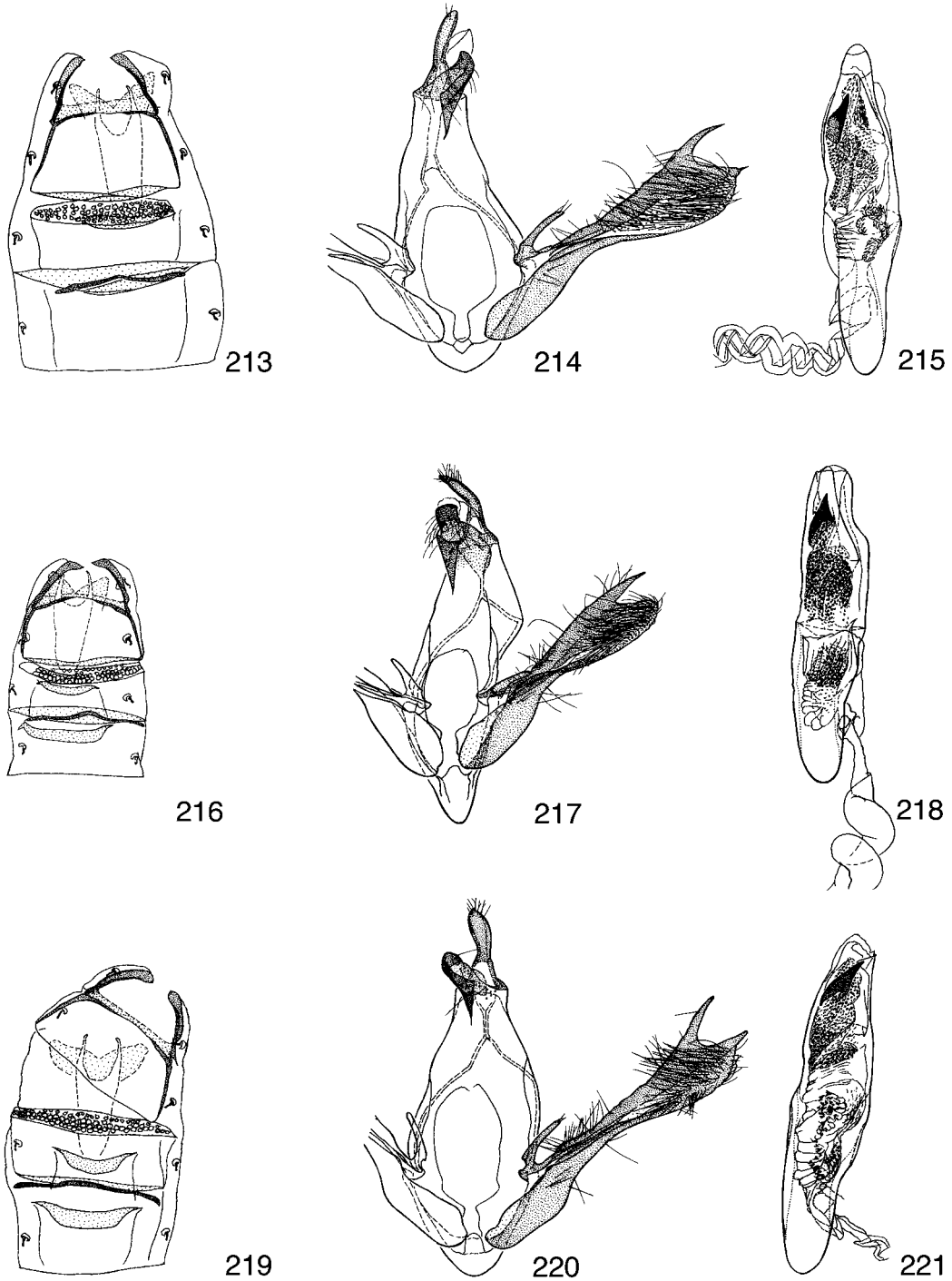


211

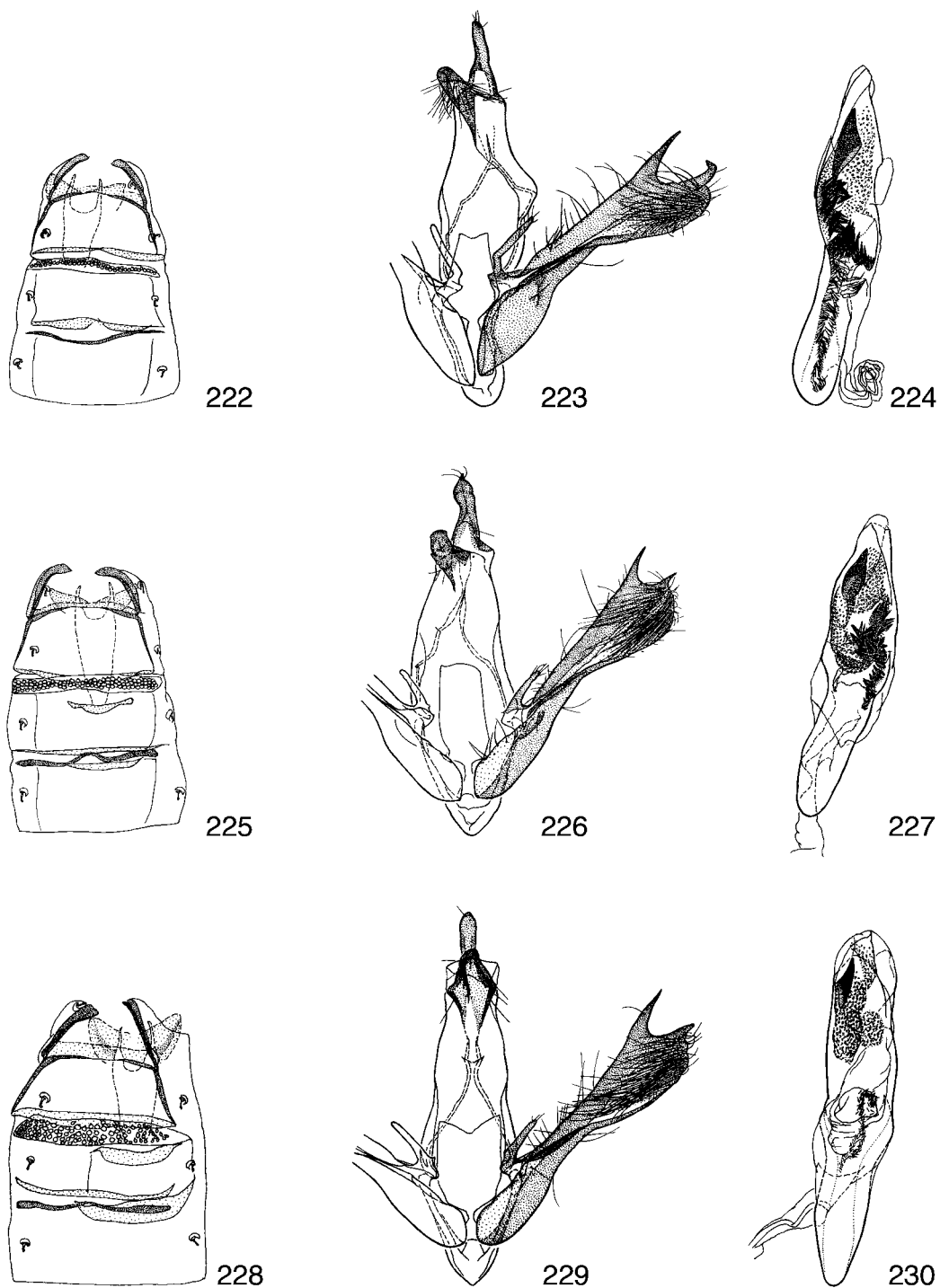


212

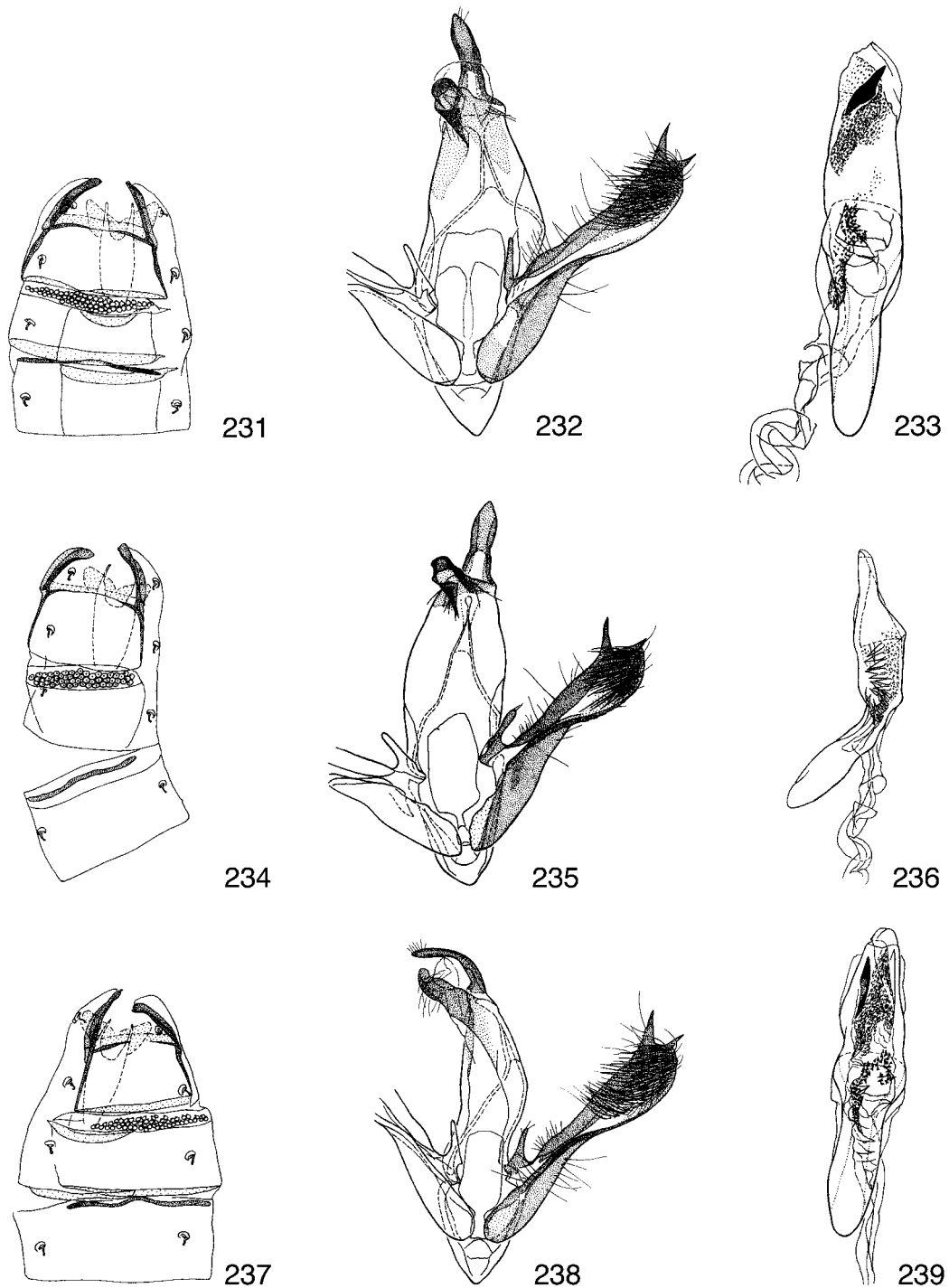
FIGURES 204–212. Abdomen and genitalia of male *Glyphidocera*. Figs. 204–206, *G. vappae*. Figs. 207–209, *G. positurae*. Figs. 210–212, *G. zophocrossa* Meyrick.



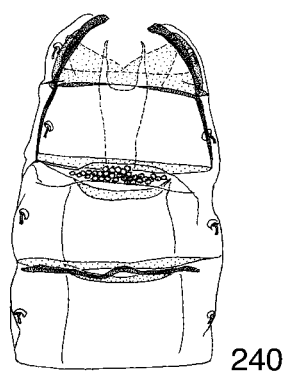
FIGURES 213–221. Abdomen and genitalia of male *Glyphidocera*. Figs. 213–215, *G. guaroa* Adamski. Figs. 216–218, *G. rubetae*. Figs. 219–221, *G. harenae*.



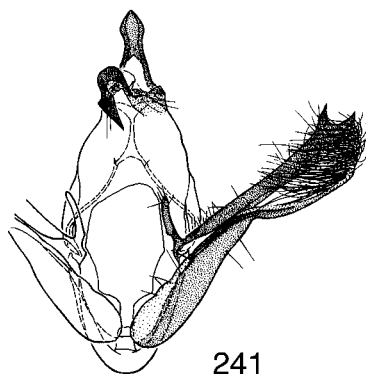
FIGURES 222–230. Abdomen and genitalia of male *Glyphidocera*. Figs. 222–224, *G. crepidae*. Figs. 225–227, *G. vestita* Walsingham. Figs. 228–230, *G. speculae*.



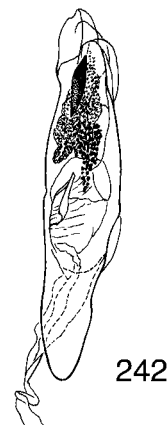
FIGURES 231–239. Abdomen and genitalia of male *Glyphidocera*. Figs. 231–233, *G. ambrosiae*. Figs. 234–236, *G. luxuriae*. Figs. 237–239, *G. coturnicis*.



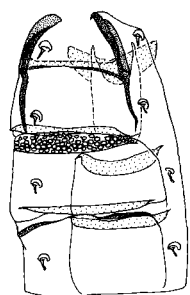
240



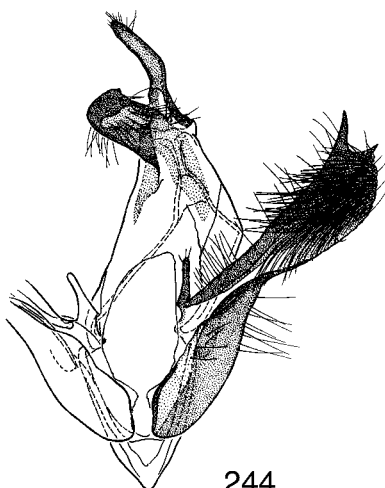
241



242



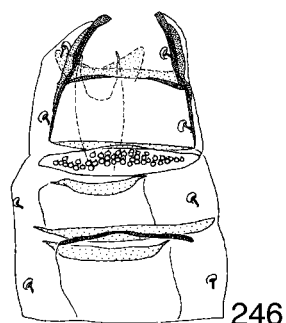
243



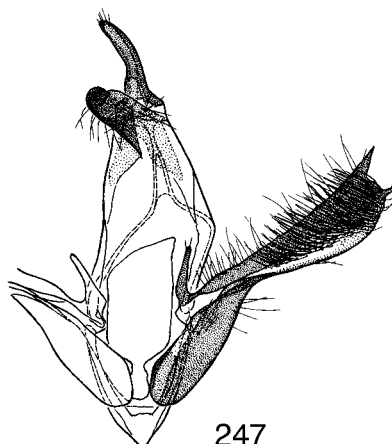
244



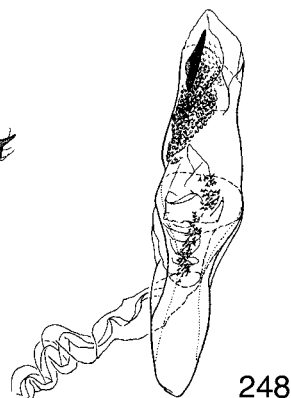
245



246

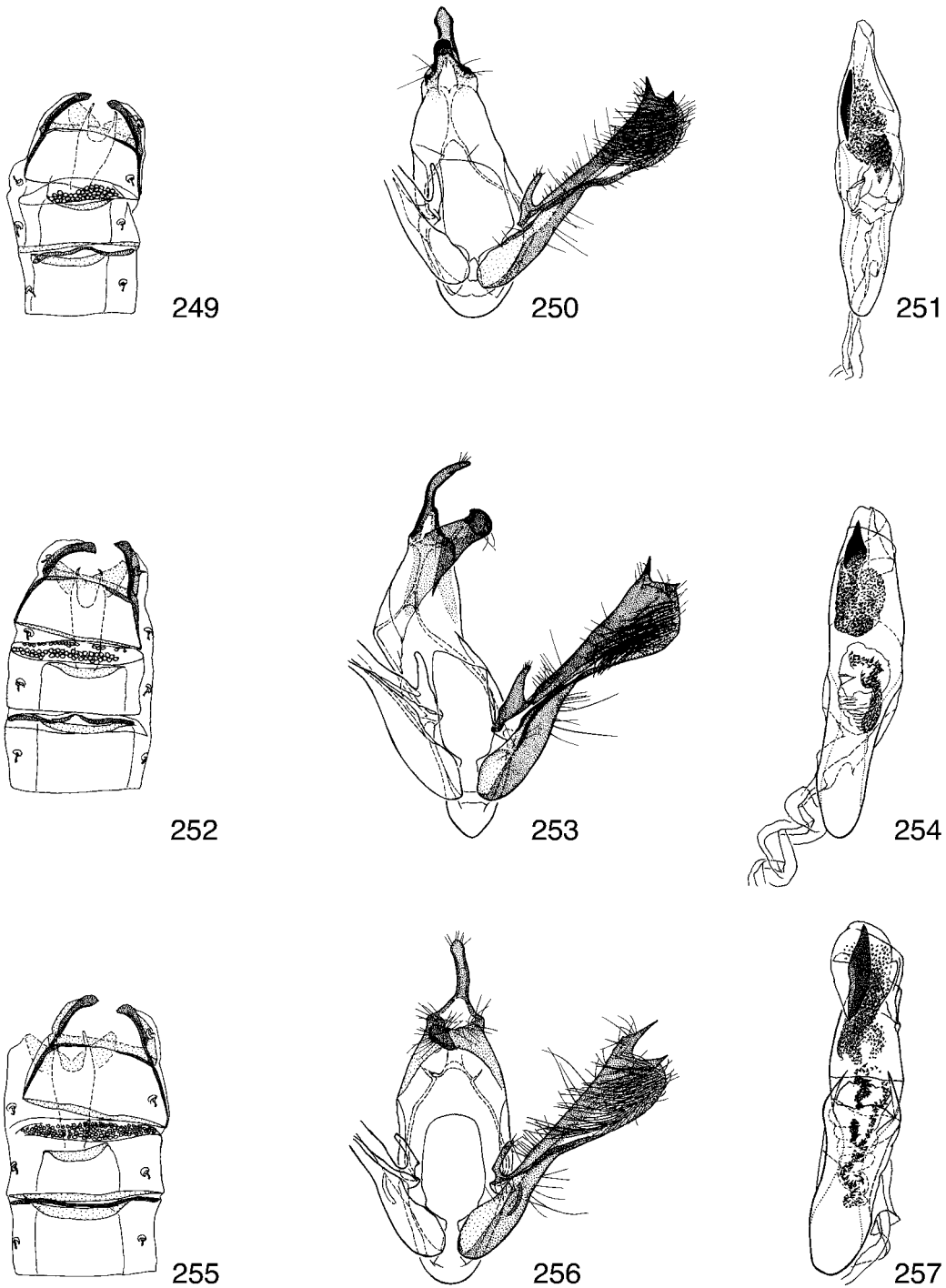


247

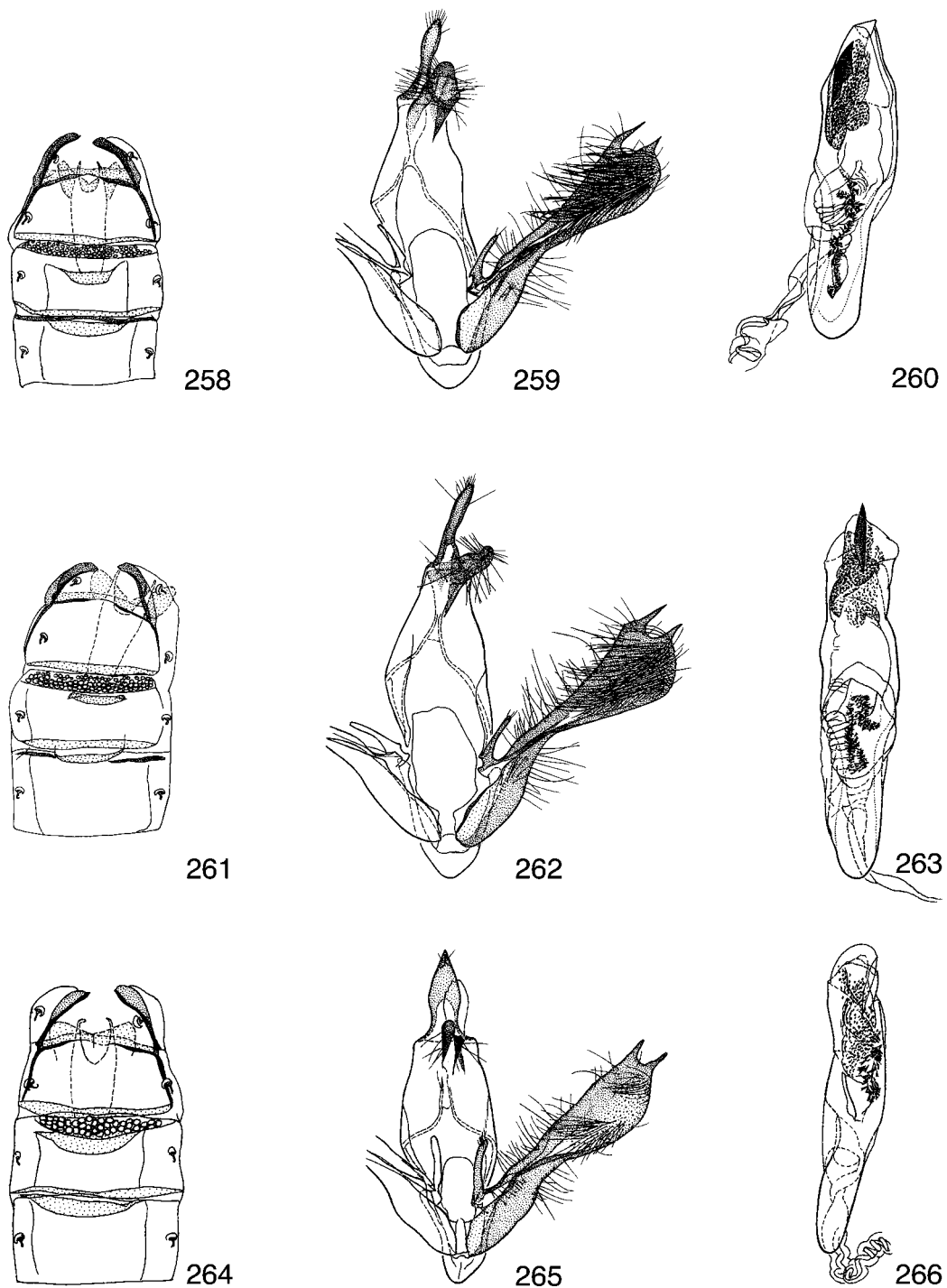


248

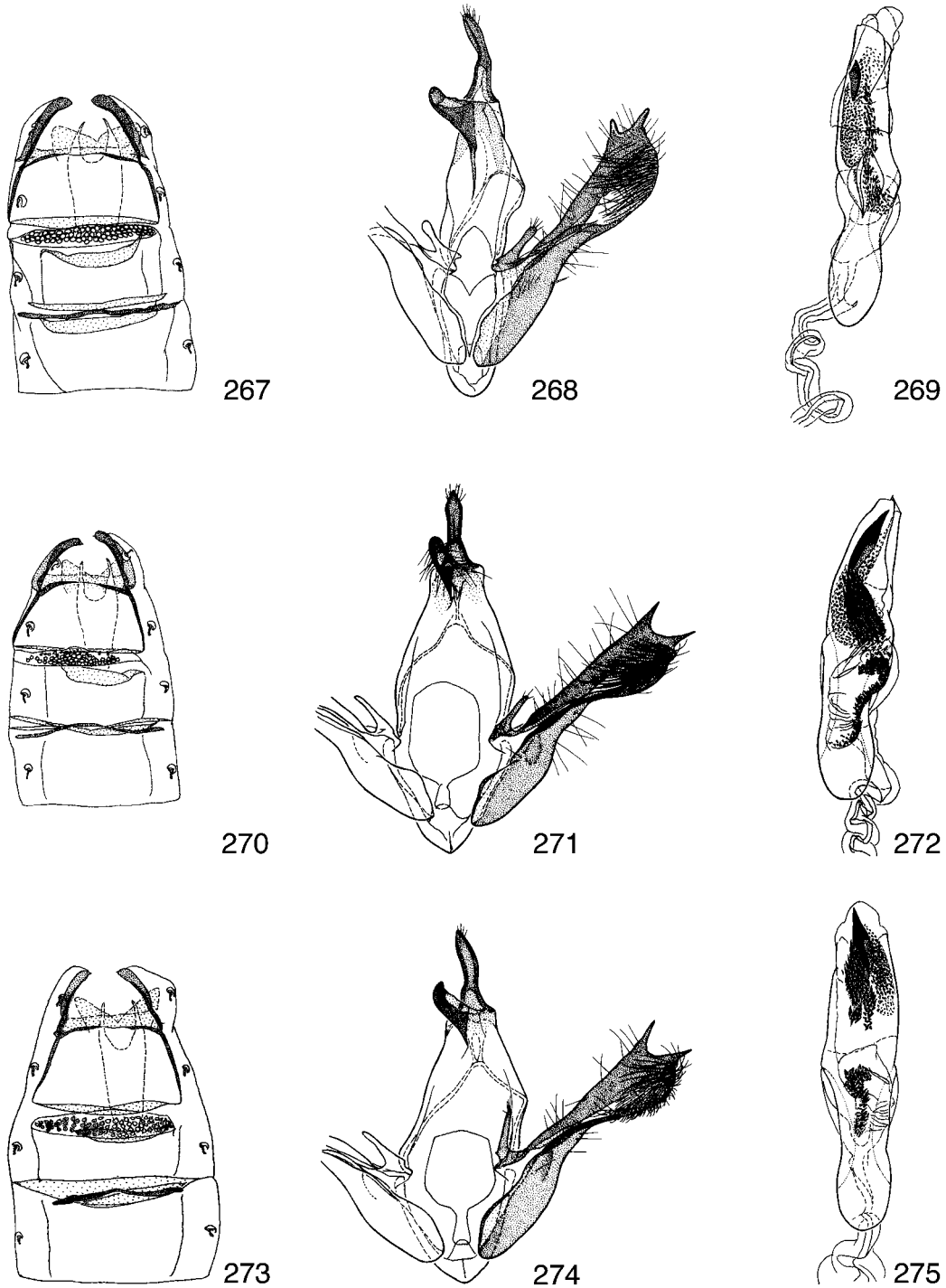
FIGURES 240–248. Abdomen and genitalia of male *Glyphidocera*. Figs. 240–242, *G. sapphiri*. Figs. 243–245, *G. fabulae*. Figs. 246–248, *G. arenae*.



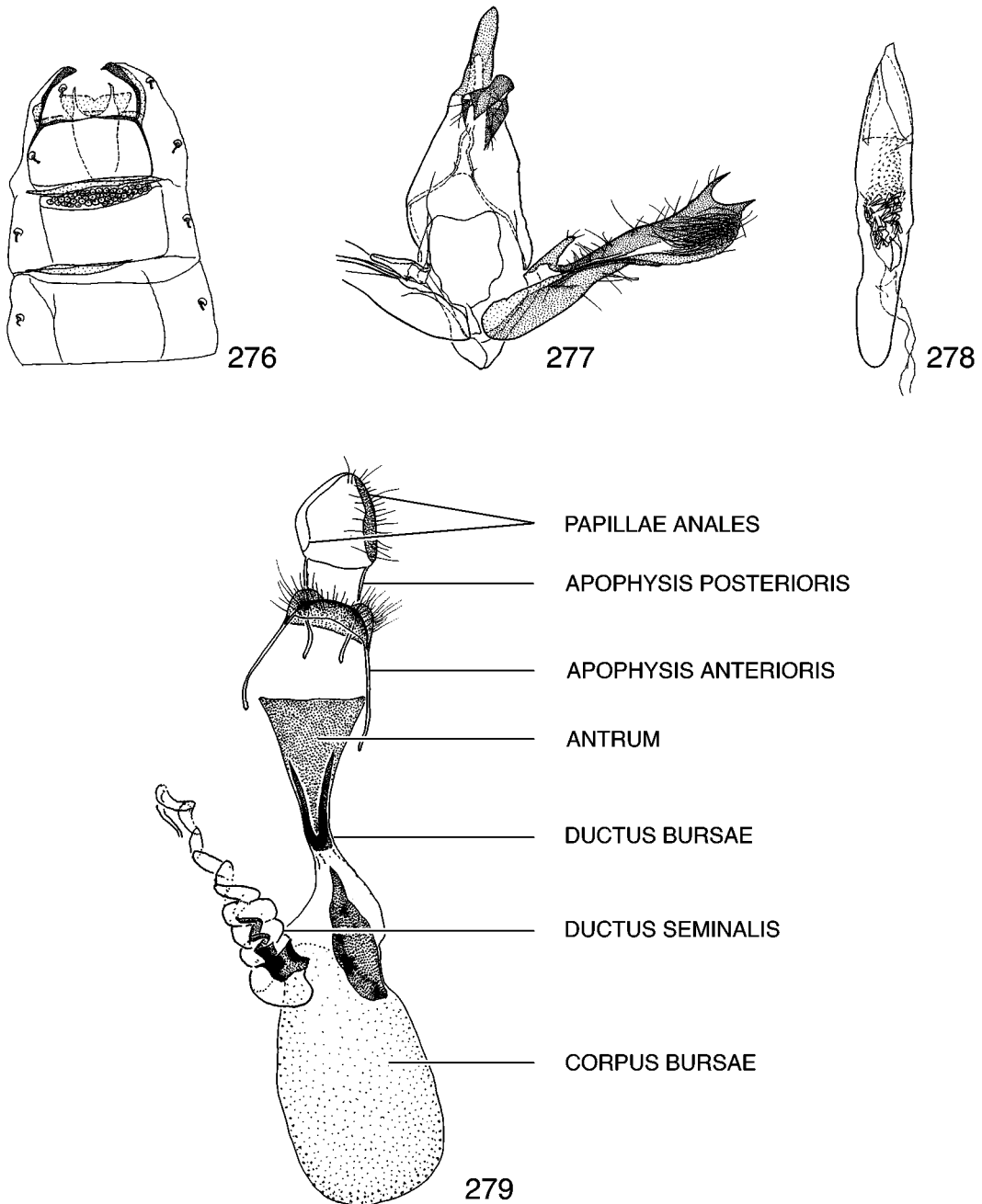
FIGURES 249–257. Abdomen and genitalia of male *Glyphidocera*. Figs. 249–251, *G. ancillae*. Figs. 252–254, *G. ranae*. Figs. 255–257, *G. sollertiae*.



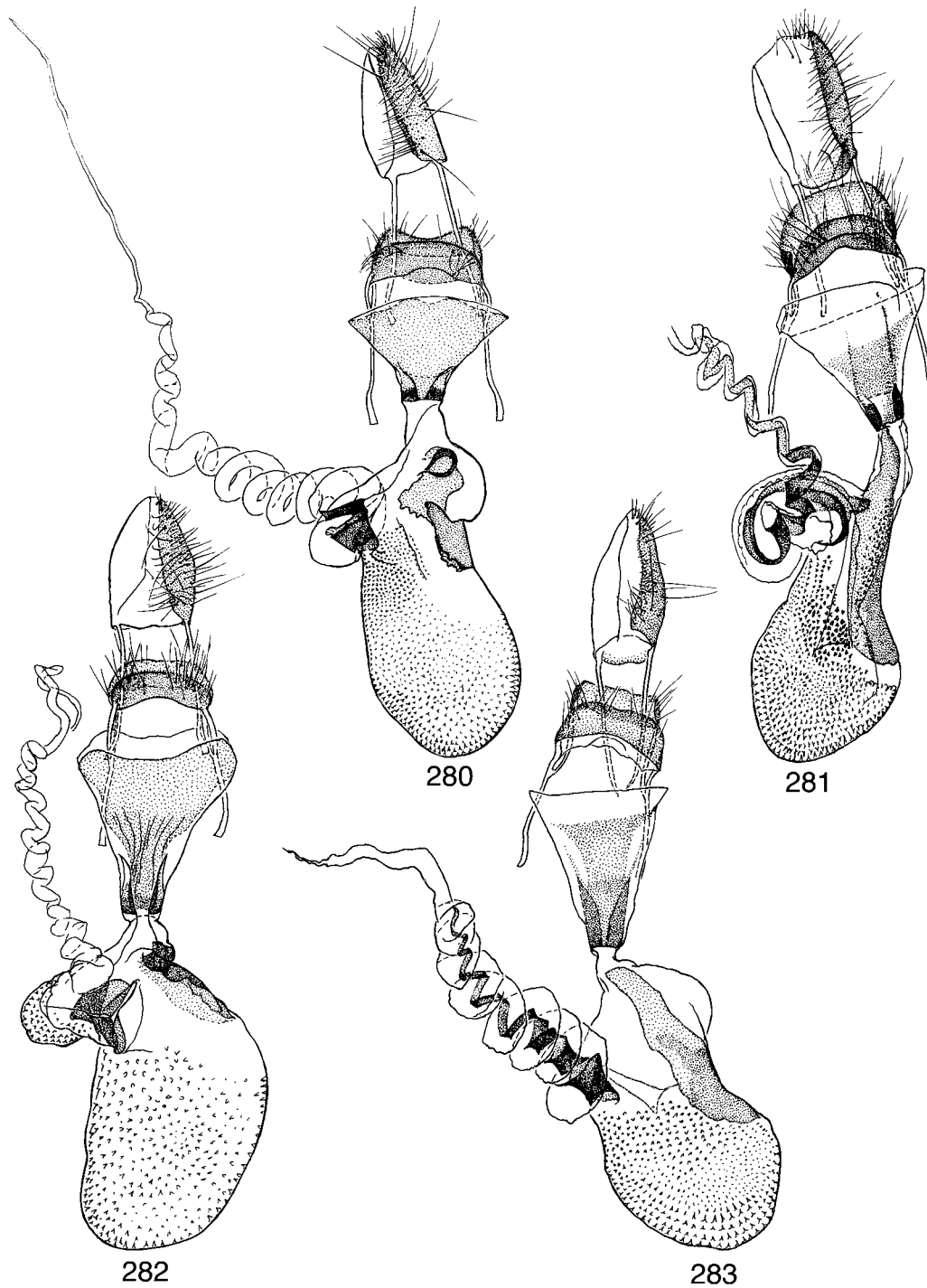
FIGURES 258–266. Abdomen and genitalia of male *Glyphidocera*. Figs. 258–260, *G. gloriae*. Figs. 261–263, *G. coquae*. Figs. 264–266, *G. vocis*.



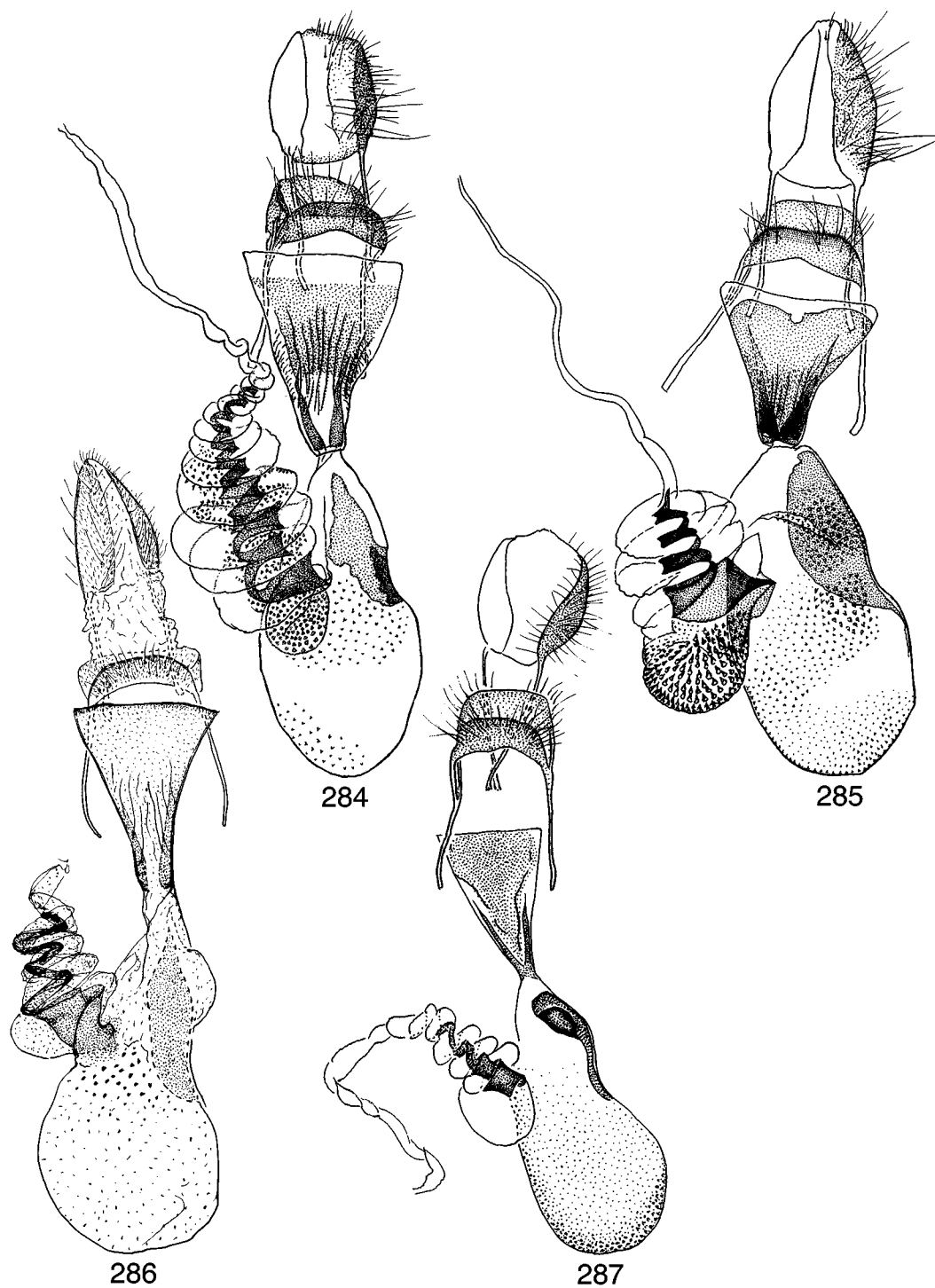
FIGURES 267–275. Abdomen and genitalia of male *Glyphidocera*. Figs. 267–269, *G. clavae*. Figs. 270–272, *G. spathae*. Figs. 273–275, *G. scuticae*.



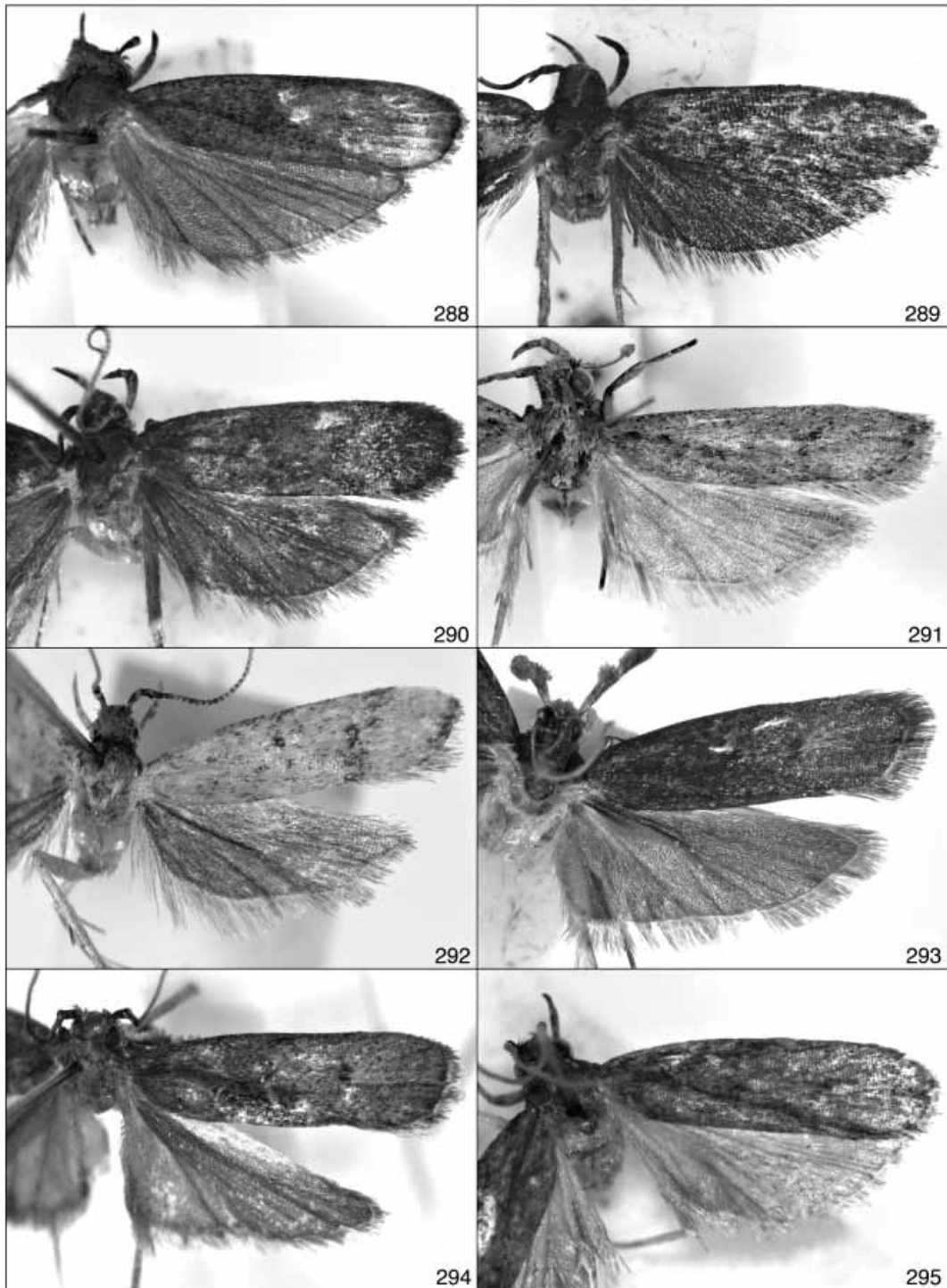
FIGURES 276–279. Abdomen and genitalia of male and female *Glyphidocera*. Figs. 276–278, *G. cotis*. Fig. 279, *G. dictionis*.



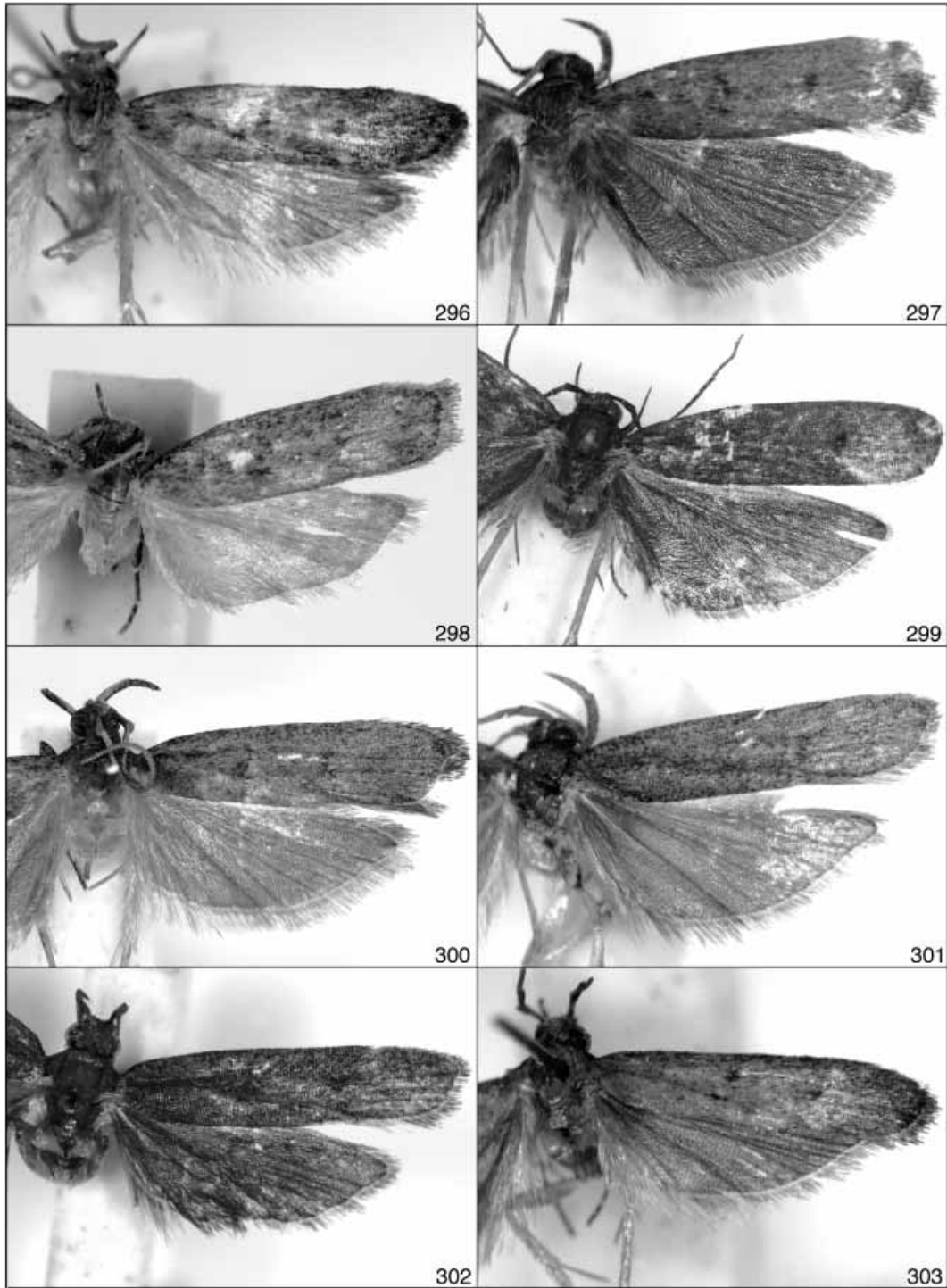
FIGURES 280–283. Female genitalia of *Glyphidocera*. Fig. 280, *G. terrae*. Fig. 281, *G. illiterata* Meyrick. Fig. 282, *G. coronae*. Fig. 283, *G. virgulae*.



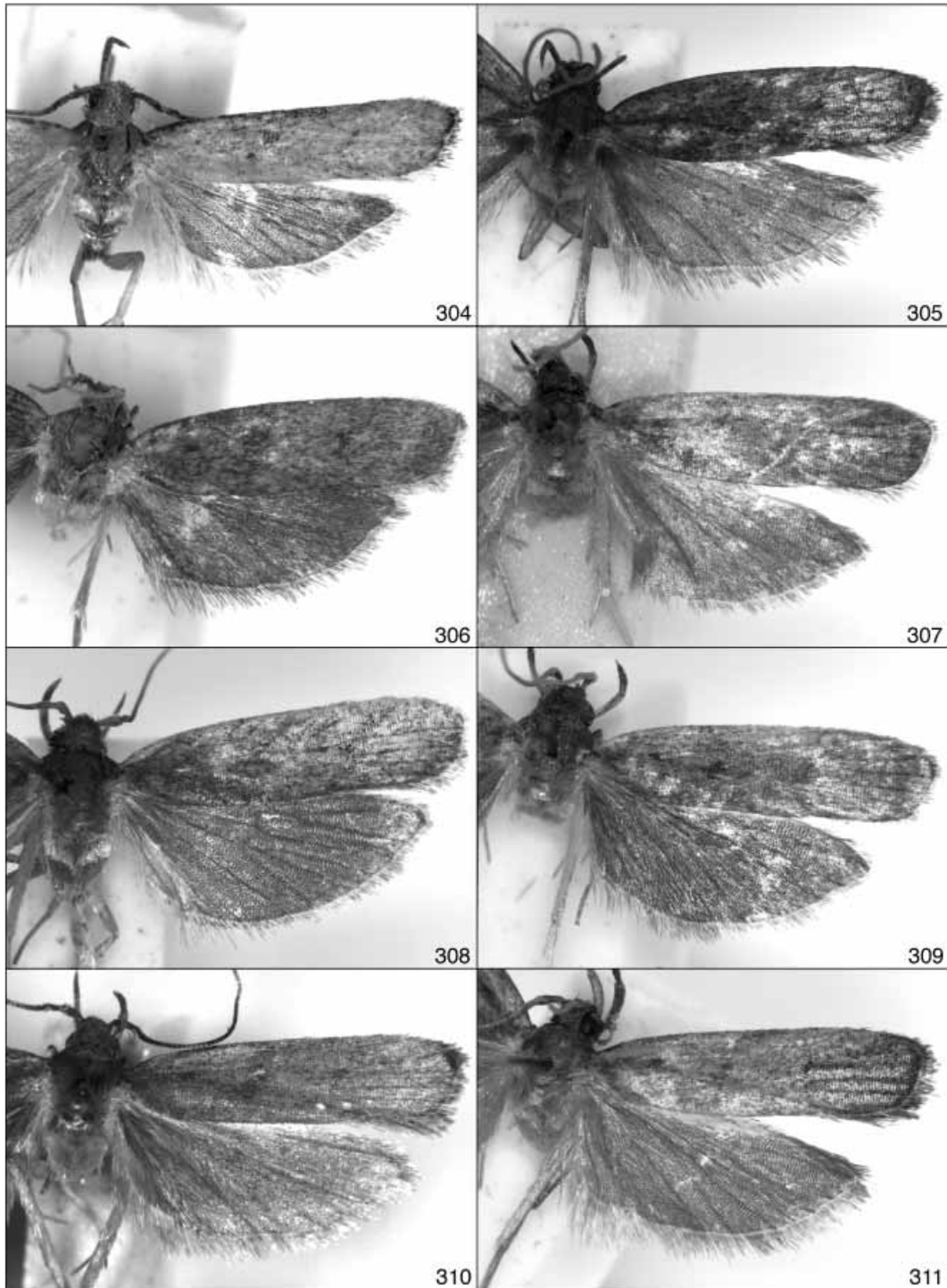
FIGURES 284–287. Female genitalia of *Glyphidocera*. Fig. 284, *G. olivae*. Fig. 285, *G. fidem*. Fig. 286, *G. vappae*. Fig. 287, *G. tibiae*.



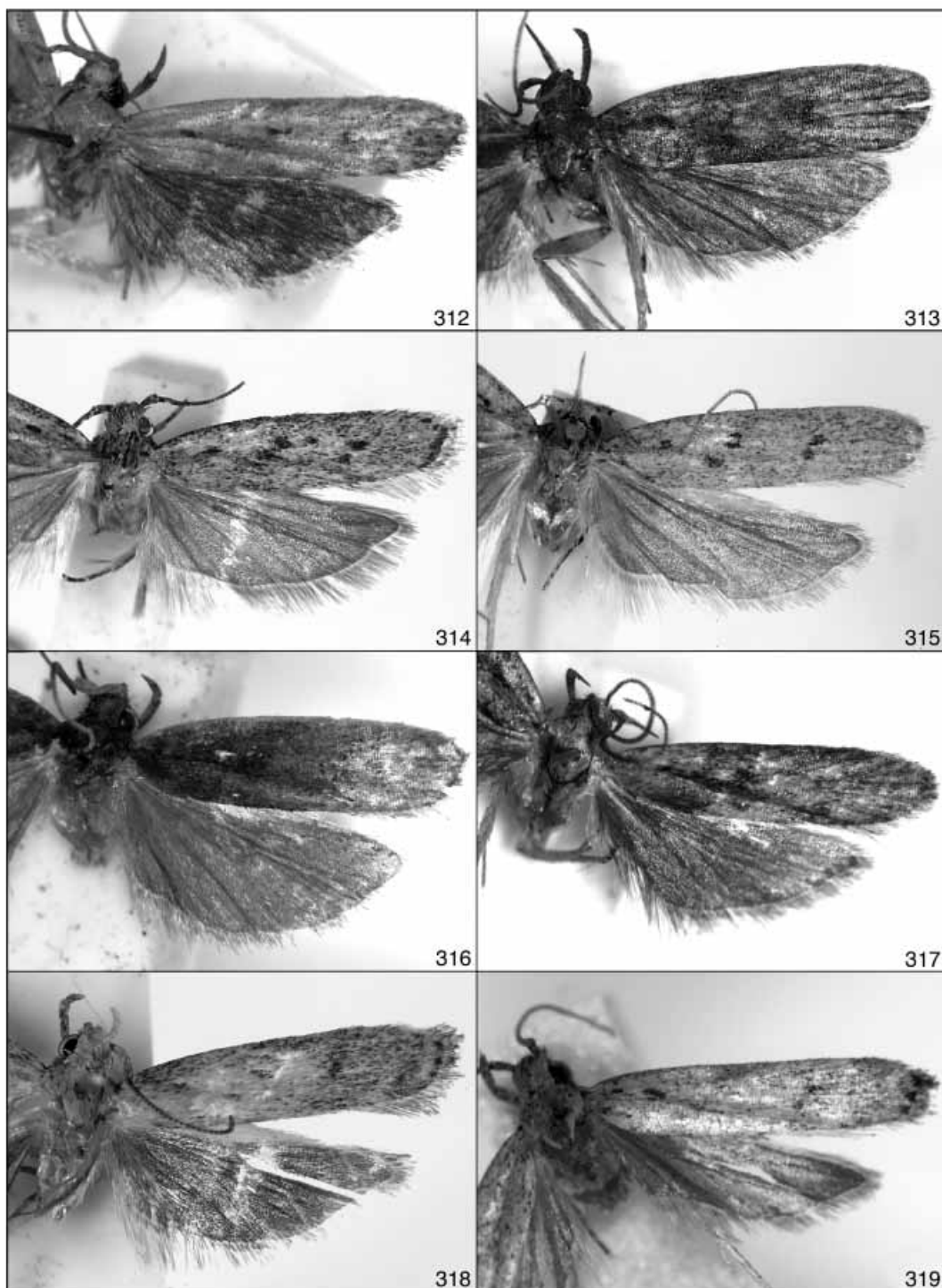
FIGURES 288–295. Holotypes of *Glyphidocera*. Fig. 288, *G. asymmetricae*. Fig. 289, *G. ferae*. Fig. 290, *G. nubis*. Fig. 291, *G. paenulae*. Fig. 292, *G. arakawae*. Fig. 293, *G. operae*. Fig. 294, *G. advenae*. Fig. 295, *G. orae*.



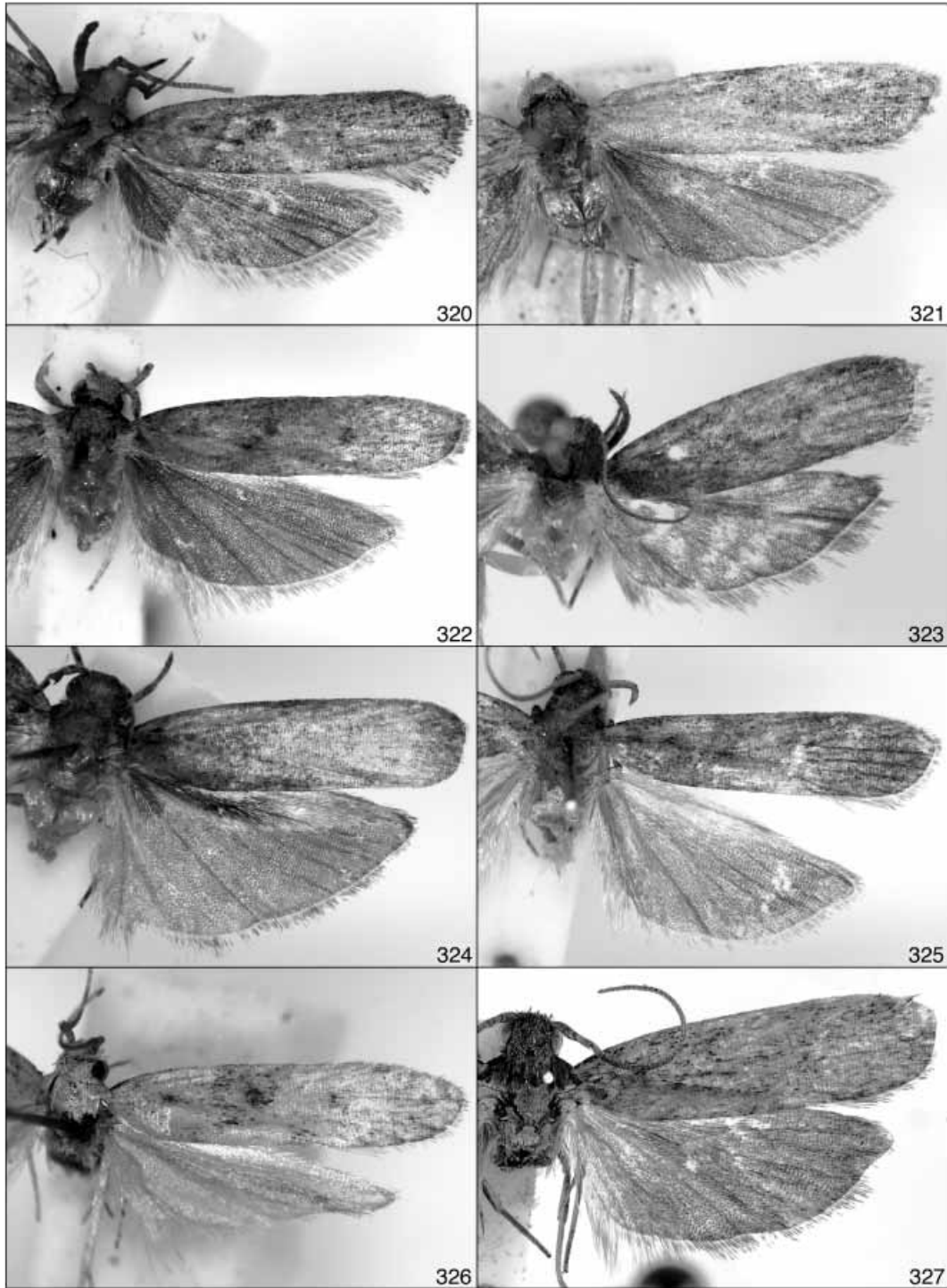
FIGURES 296–303. Holotypes of *Glyphidocera*. Fig. 296, *G. cellae*. Fig. 297, *G. terrae*. Fig. 298, *G. ollae*. Fig. 299, *G. corniculae*. Fig. 300, *G. aedis*. Fig. 301, *G. adrogantiae*. Fig. 302, *G. faecis*. Fig. 303, *G. gemmae*.



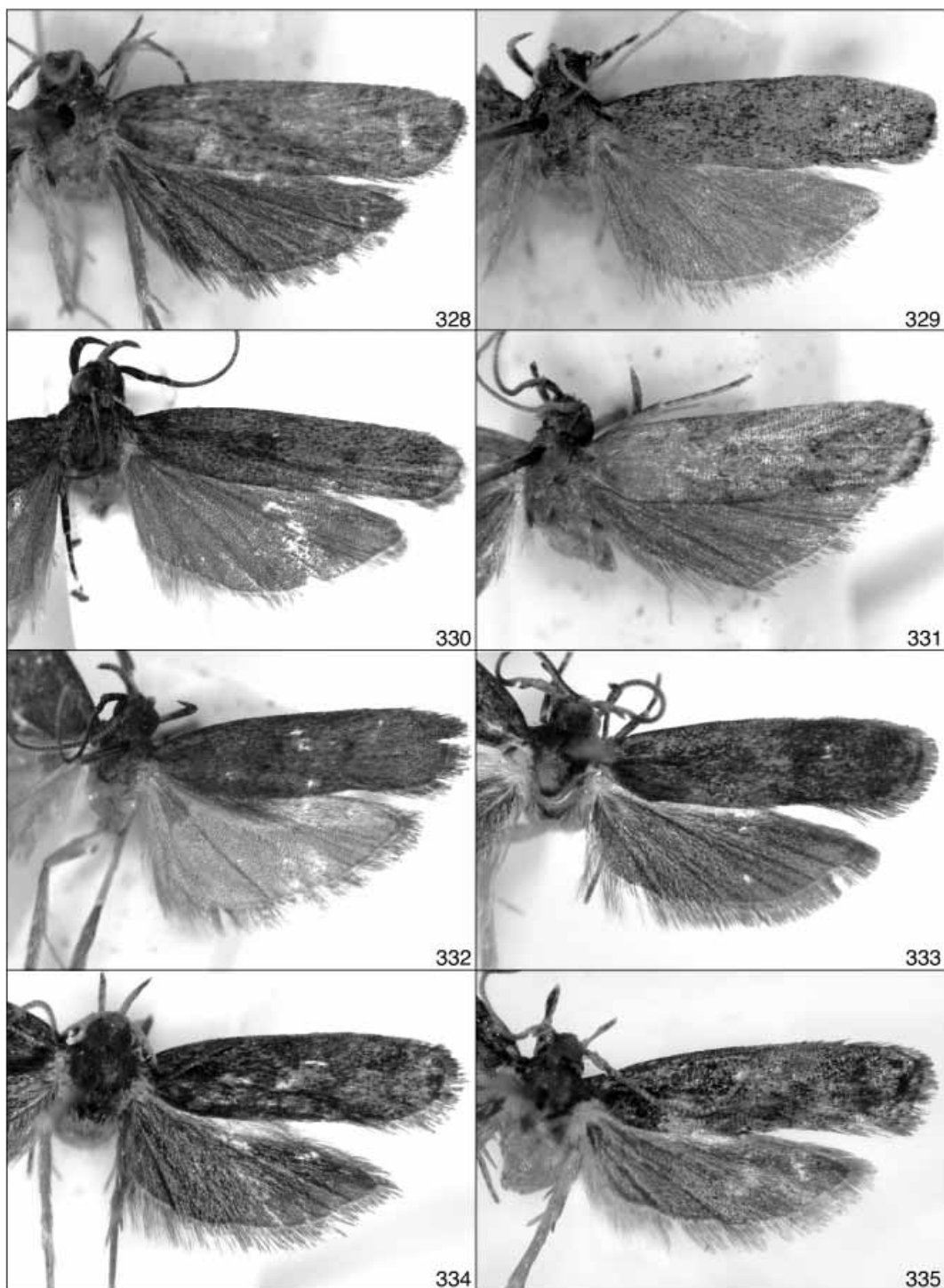
FIGURES 304–311. Holotypes of *Glyphidocera*. Fig. 304, *G. aedicalae*. Fig. 305, *G. cerula*. Fig. 306, *G. raedae*. Fig. 307, *G. rodríguezi*. Fig. 308, *G. capsae*. Fig. 309, *G. audaciae*. Fig. 310, *G. coronae*. Fig. 311, *G. infulae*.



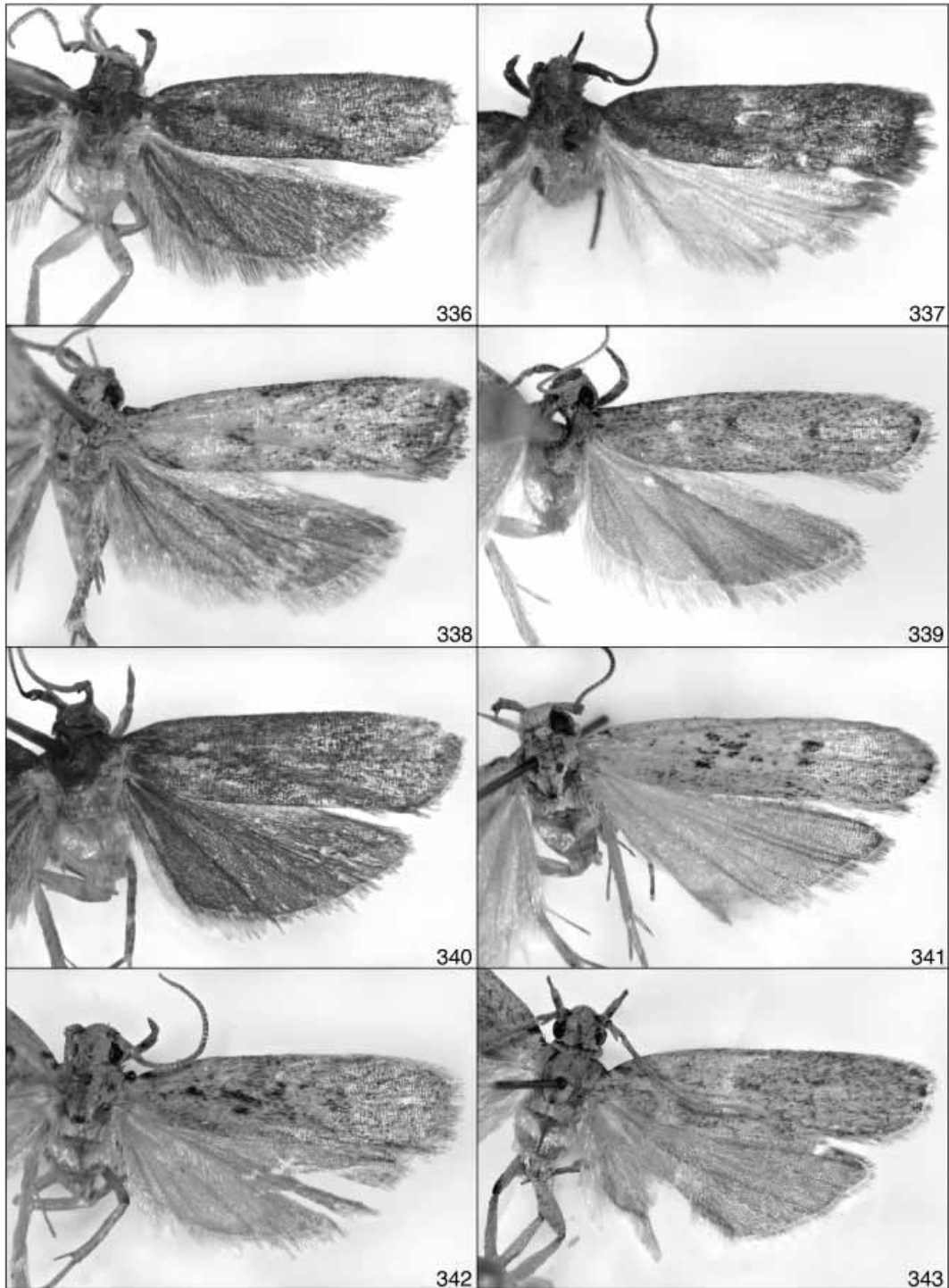
FIGURES 312–319. Holotypes of *Glyphidocera*. Fig. 312, *G. dictionis*. Fig. 313, *G. zotheuale*. Fig. 314, *G. arae*. Fig. 315, *G. cauponae*. Fig. 316, *G. sardae*. Fig. 317, *G. eminentiae*. Fig. 318, *G. brumae*. Fig. 319, *G. plebis*.



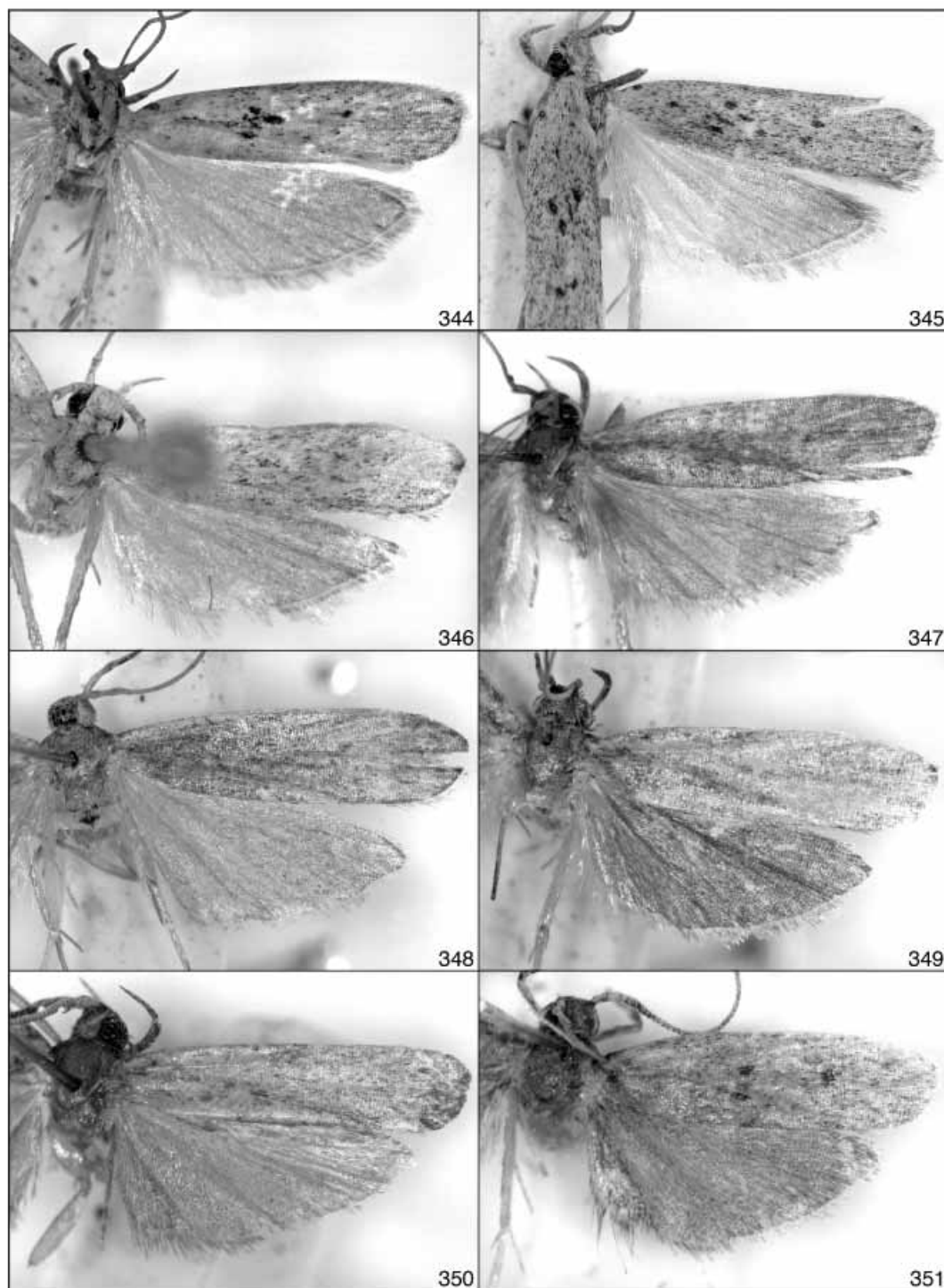
FIGURES 320–327. Holotypes of *Glyphidocera*. Fig. 320, *G. lawrenceae*. Fig. 321, *G. lanae*. Fig. 322, *G. notae*. Fig. 323, *G. cenae*. Fig. 324, *G. minarum*. Fig. 325, *G. ciatae*. Fig. 326, *G. lupae*. Fig. 327, *G. plumae*.



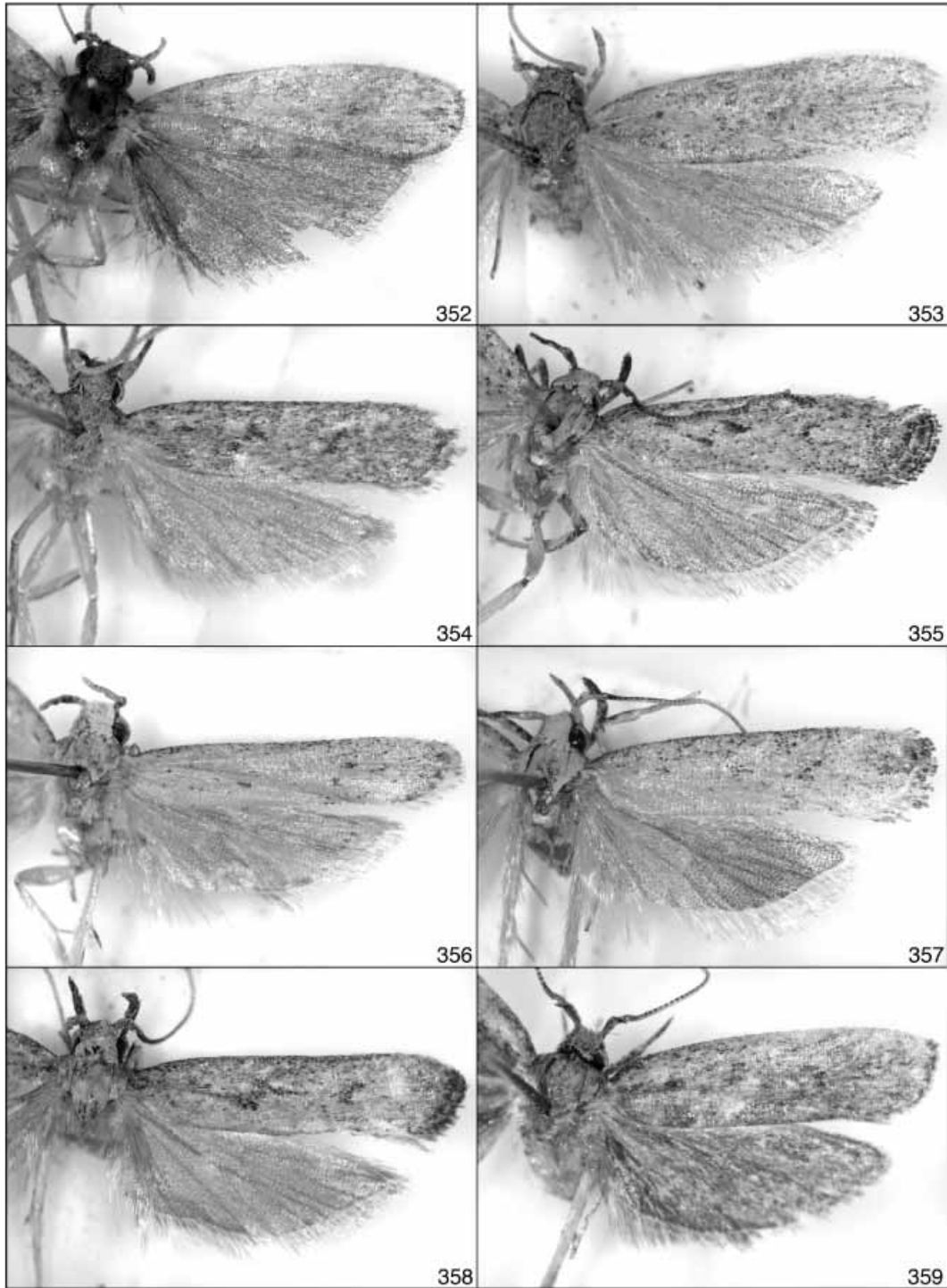
FIGURES 328–335. Holotypes of *Glyphidocera*. Fig. 328, *G. burpurae*. Fig. 329, *G. animae*. Fig. 330, *G. diciae*. Fig. 331, *G. comae*. Fig. 332, *G. gazae*. Fig. 333, *G. virgulae*. Fig. 334, *G. personae*. Fig. 335, *G. contionis*.



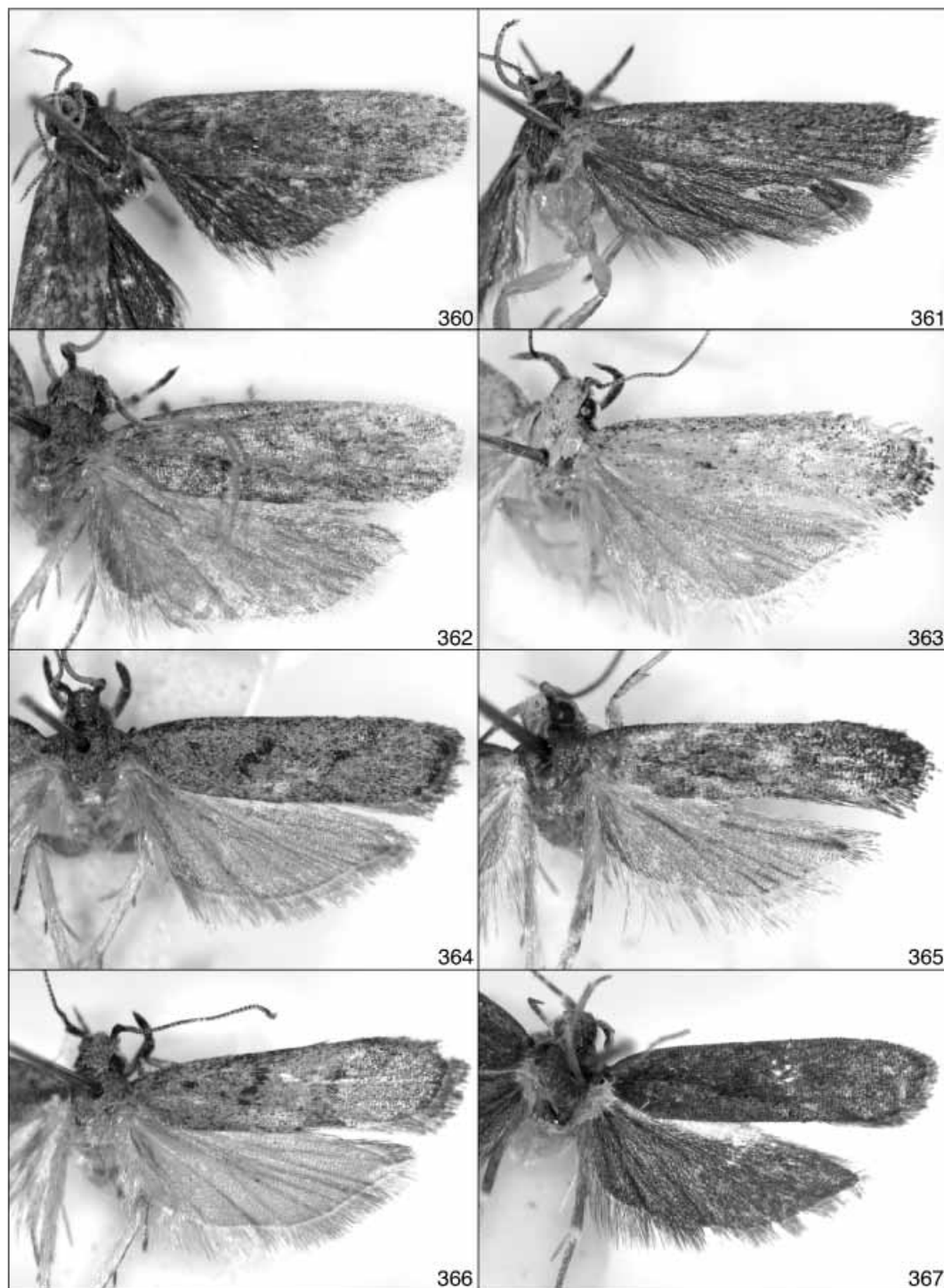
FIGURES 336–343. Holotypes of *Glyphidocera*. Fig. 336, *G. umbrae*. Fig. 337, *G. illiterata* Meyrick. Fig. 338, *G. olivae*. Fig. 339, *G. reginae*. Fig. 340, *G. fidem*. Fig. 341, *G. pilae*. Fig. 342, *G. glaebae*. Fig. 343, *G. tibiae*.



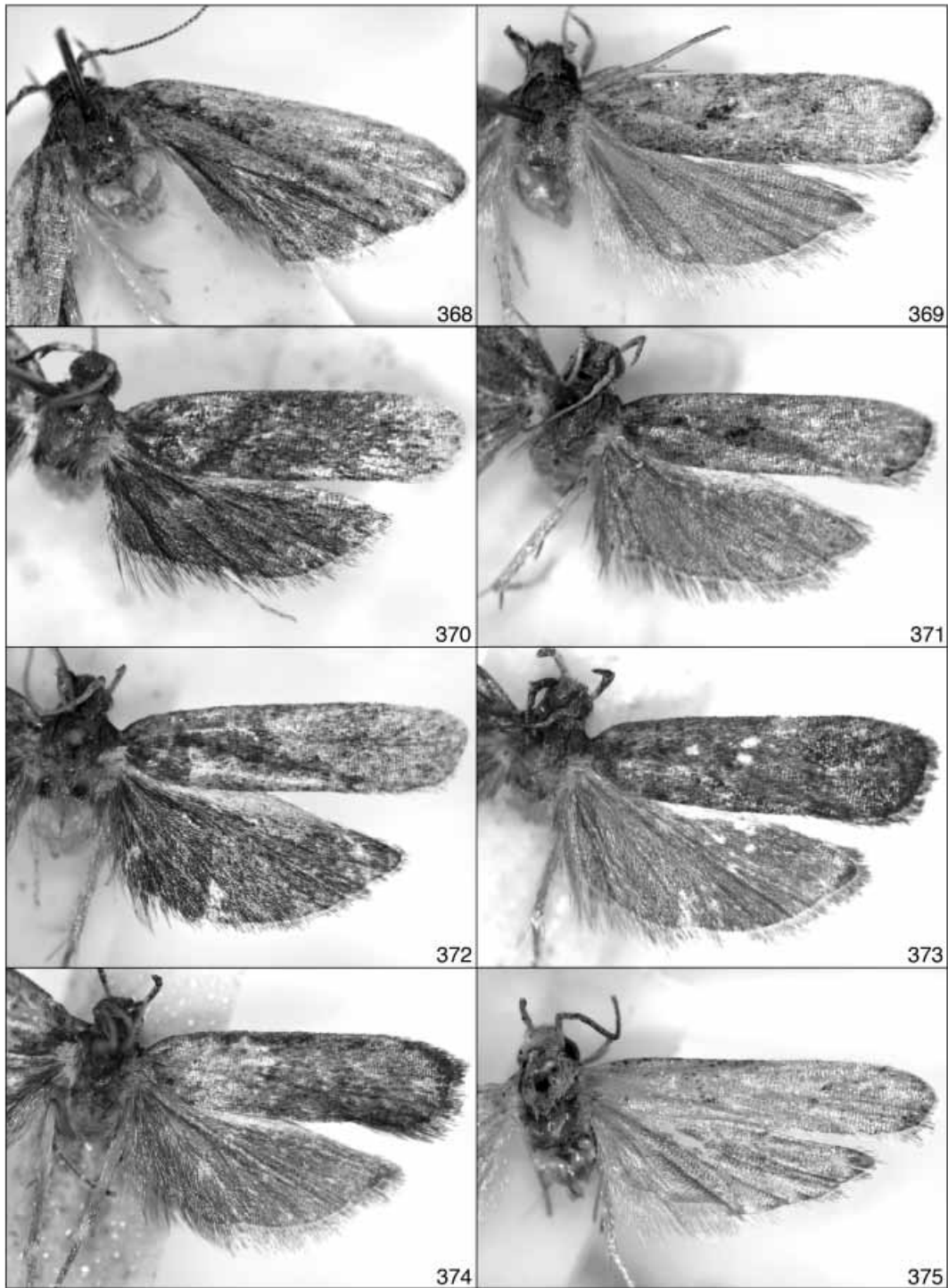
FIGURES 344–351. Holotypes of *Glyphidocera*. Fig. 344, *G. novercae*. Fig. 345, *G. caveae*. Fig. 346, *G. staerae*. Fig. 347, *G. amitae*. Fig. 348, *G. zamiae*. Fig. 349, *G. cenulae*. Fig. 350, *G. laricae*. Fig. 351, *G. barbae*.



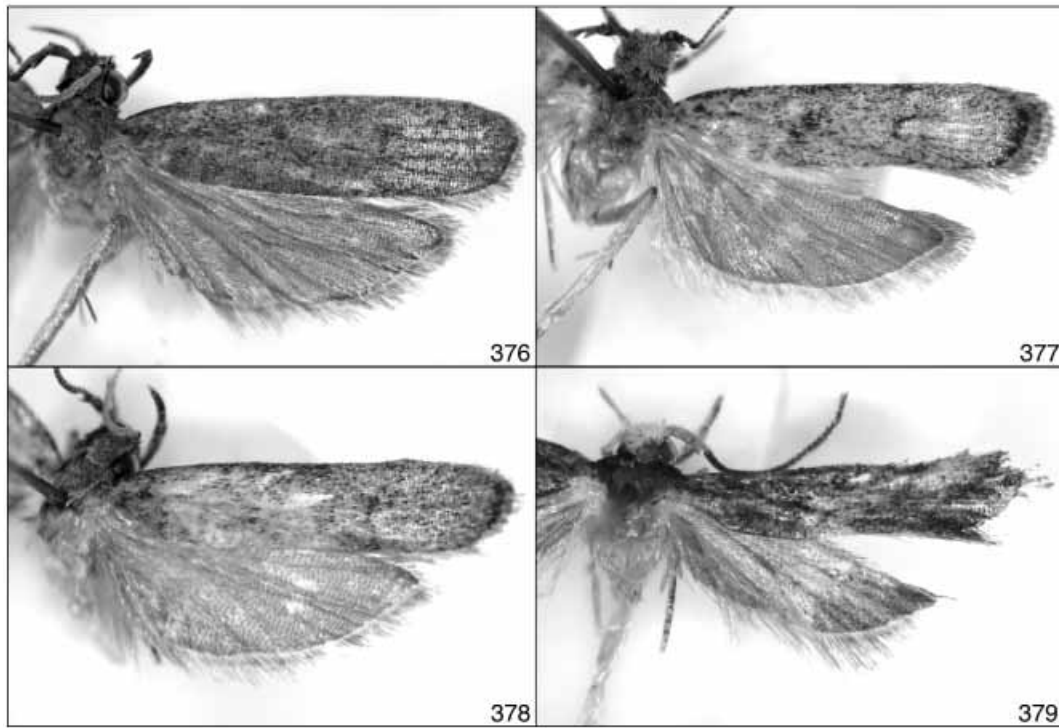
FIGURES 352–359. Holotypes of *Glyphidocera*. Fig. 352, *G. pali*. Fig. 353, *G. placentae*. Fig. 354, *G. formae*. Fig. 355, *G. vappae*. Fig. 356, *G. positurae*. Fig. 357, *G. zophocrossa* Meyrick. Fig. 358, *G. guaroa* Adamski. Fig. 359, *G. rubetae*.



FIGURES 360–367. Holotypes of *Glyphidocera*. Fig. 360, *G. harenae*. Fig. 361, *G. crepidae*. Fig. 362, *G. vestita* Walsingham. Fig. 363, *G. speculae*. Fig. 364, *G. ambrosiae*. Fig. 365, *G. luxuriae*. Fig. 366, *G. coturnicis*. Fig. 367, *G. sapphiri*.



FIGURES 368–375. Holotypes of *Glyphidocera*. Fig. 368, *G. fabulae*. Fig. 369, *G. arenae*. Fig. 370, *G. ancillae*. Fig. 371, *G. ranae*. Fig. 372, *G. sollertiae*. Fig. 373, *G. gloriae*. Fig. 374, *G. coquae*. Fig. 375, *G. vocis*.



FIGURES 376–379. Holotypes of *Glyphidocera*. Fig. 376, *G. clavae*. Fig. 377, *G. spathae*. Fig. 378, *G. scuticae*. Fig. 379, *G. cotis*.